



Dear [REDACTED]

Thank you for emailing the Ministry of Education on 28 October 2018, and requesting the following information:

Could you please provide me for each of the last five years (2012-2017), for each NZ primary school, for each year level:

- The number of students who are stood-down, suspended, excluded or expelled (separately)*
- The average number of days of each stand down, suspension or exclusion*
- The average number of times an individual student is stood down, suspended or excluded in each year*
- The number of students at the school*
- The region of the school*
- The decile of the school*

On 12 November, you agreed to clarify your request as follows:

- The number of students stood down, suspended and excluded from state and state integrated primary schools between 2012 and 2017, broken down by territorial local authority and year level.*
- The number of students excluded and expelled between 2012 and 2017, broken down by decile with each decile step broken down by year level*

Your request has been considered under the Official Information Act 1982 (the Act).

A spreadsheet with the information you have requested is attached to the same email as this letter.

For your reference, I have attached a copy of 'Stand-downs, suspensions, exclusions and expulsions from school' with this response as **Document 1**. This report was prepared in conjunction with the release of student engagement data onto *Education Counts* in June 2018, and discusses in detail the use of stand-downs, suspensions, exclusions and expulsions by schools during 2017.

Definitions

A state or state-integrated school may consider the formal removal of a student through a **stand-down** for a period of up to five school days. A stand-down can total no more than five school days in a term, or ten days in a school year.

A **suspension** is the formal removal of a student from a school until the school board of trustees (the board) decides the outcome at a suspension meeting. Following a suspension, the board decides how to address the student's misbehaviour. The board can either lift the suspension (with or without conditions), extend the suspension (with conditions), or terminate the student's enrolment at the school.

Exclusions and expulsions are subsets of suspension where an enrolment is terminated. If the student is aged under 16, the board may decide to exclude the student from the school, with the

requirement that the student enrolls elsewhere. This decision should be arrived at in only the most serious cases. If the student is aged 16 or over, the board may decide to expel him or her from the school, and the student may or may not enrol at another school. Again, this decision should be arrived at only in the most serious cases. Excluded or expelled students may face difficulties in enrolling in other schools.

Stand-downs and suspensions are measures of schools' reactions to behaviours, as much as they are a measure of the behaviours themselves. What one school may suspend for, another may not, and our data does not capture the severity of an individual action.

A comprehensive view of age standardised data per 1,000 students is available by going to our website *Education Counts* at <http://www.educationcounts.govt.nz/statistics/indicators>, and choosing "stand downs, suspensions, exclusions and expulsions" from the drop down list.

Current support for schools

Schools are required to develop comprehensive local approaches to promoting pro-social behaviour and wellbeing within their setting. We support these efforts, and the development of whole school capability, with programmes such as Positive Behaviour for Learning (PB4L).

Our '*Teaching for Positive Behaviour*' resource supports teachers to understand and use effective practices that enhance students' behaviour, engagement, participation, and learning. You can read about both of these resources in more detail at: <http://pb4l.tki.org.nz/PB4L-School-Wide>.

Our Learning Support professionals work specifically to support children and young people with higher levels of challenging behaviour. '*Understanding Behaviour – Responding Safely*', a training workshop for behaviour management that focuses on preventative and de-escalation techniques, has been developed for New Zealand schools. It is delivered by Learning Support professionals who can provide ongoing support to schools.

The school-based Resource Teacher: Learning and Behaviour (RTLb) service supports clusters of schools to develop whole school behaviour management strategies to help manage the additional learning needs of students and help enhance students' learning participation and wellbeing.

We also provide bullying prevention guidance for school Boards of Trustees, which you can find by searching the resources section at: <https://www.bullyingfree.nz>

Our schooling futures | Whiria Ngā Kura Tūātitini

We strive for an education system which delivers excellent and equitable outcomes and ensures that every child receives the best quality education possible. The Tomorrow's Schools Independent Taskforce released its report *Our Schooling Futures: Stronger Together | Whiria Ngā Kura Tūātitini* on 7 December 2018 for public consultation. The report discusses Boards of Trustees' governance and management arrangements and makes several recommendations on the way forward, including around the management of student stand-downs.

You can read the report at our website Education Conversations | Kōrero Mātauranga, at conversation.education.govt.nz/tomorrows-schools-review.

Consultations on the report are open until April 2019. We encourage anyone with an interest in aspects of school governance and student achievement to provide their input on the Taskforce's recommendations.

Thank you again for your request. Section 28(3) of the Act, gives you the right to refer my response to an Ombudsman. You can do this by writing to info@ombudsman.parliament.govt.nz.

Yours sincerely

A handwritten signature in black ink, appearing to read 'Katrina', with a long, sweeping horizontal line extending from the end of the signature.

Katrina Casey
Deputy Secretary
Sector Enablement and Support

Number of Standdowns, Suspensions, Exclusions, and Expulsions for Year 1-8 students by Territorial Authority and Year Level (2012-2017)

Note: Students must be aged 16 or over to be expelled, so there are no expulsions for primary students

Note: Students must be aged 16 or over to be expelled, so there are no expulsions for primary students																					
		Standdowns						Suspensions							Exclusions						
		2012	2013	2014	2015	2016	2017	2012	2013	2014	2015	2016	2017	2012	2013	2014	2015	2016	2017		
Ashburton District	Year 1	0	2	0	0	0	2	0	0	1	0	0	0	0	0	0	0	0	0		
	Year 2	0	0	1	0	1	0	0	0	0	0	0	0	0	0	0	0	0	0		
	Year 3	0	1	1	3	2	5	0	0	0	0	0	0	0	0	0	0	0	0		
	Year 4	2	1	7	1	6	3	1	0	0	0	0	0	0	0	0	0	0	0		
	Year 5	8	6	2	7	4	4	0	2	0	2	0	0	0	0	1	0	0	0		
	Year 6	5	3	5	4	4	4	0	1	2	1	2	1	0	0	1	1	1	1		
	Year 7	3	6	5	8	11	15	0	2	0	0	3	1	0	1	0	0	0	0		
	Year 8	14	5	14	15	16	16	4	1	2	4	1	2	2	0	0	0	1	0		
	Total	32	24	35	38	44	49	5	6	5	7	6	4	2	2	1	1	2	1		
Auckland- Albert-Eden	Year 1	0	0	2	1	1	0	0	0	0	0	0	0	0	0	0	0	0	0		
	Year 2	1	0	0	0	2	1	0	0	0	0	0	0	0	0	0	0	0	0		
	Year 3	2	0	0	0	1	6	0	0	0	0	0	1	0	0	0	0	0	0		
	Year 4	1	1	0	4	1	0	0	0	0	3	0	0	0	0	0	1	0	0		
	Year 5	1	3	2	0	4	1	1	0	0	0	1	0	1	0	0	0	0	0		
	Year 6	4	2	2	1	4	7	1	0	0	1	0	1	0	0	0	0	0	0		
	Year 7	6	2	2	2	3	2	0	1	0	0	0	0	0	1	0	0	0	0		
	Year 8	3	8	0	4	1	4	1	0	0	1	1	1	0	0	0	1	1	0		
	Total	18	16	8	12	17	21	3	1	0	5	2	3	1	1	0	2	1	0		
Auckland- Devonport-Takapuna	Year 2	0	1	0	0	0	0	0	0	0	0	0	0	0	0	0	0	0	0		
	Year 3	0	2	1	0	2	1	0	1	0	0	0	0	0	1	0	0	0	0		
	Year 4	0	0	0	4	0	0	0	1	0	0	1	0	1	0	0	0	0	0		
	Year 5	0	1	4	0	7	3	0	0	0	0	1	0	0	0	0	0	1	0		
	Year 6	1	1	4	0	0	3	0	2	0	0	0	0	1	0	0	0	0	1		
	Year 7	3	2	0	1	0	3	1	0	0	0	0	0	1	0	0	0	0	0		
	Year 8	3	0	4	5	1	5	0	0	1	0	0	0	0	0	1	0	0	0		
	Total	7	7	13	10	10	15	1	4	1	1	1	2	1	1	1	0	1	1		
	Auckland- Franklin	Year 1	0	1	1	1	1	4	0	0	0	0	0	0	0	0	0	0	0	0	
Year 2		3	3	0	3	4	2	0	0	1	0	1	0	0	0	0	0	0	0		
Year 3		1	5	5	1	2	12	0	0	1	0	1	0	0	0	1	0	0	0		
Year 4		8	5	2	6	5	7	1	0	0	0	0	1	1	0	0	0	0	0		
Year 5		16	25	7	0	7	12	0	0	0	0	0	3	0	0	0	0	0	2		
Year 6		16	16	15	1	6	7	1	4	1	0	0	0	1	1	1	0	0	0		
Year 7		20	17	27	12	19	8	5	1	1	1	3	3	1	0	0	0	1	0		
Year 8		49	33	16	34	28	25	4	4	0	0	3	5	3	2	0	0	0	2		
Total		113	105	73	58	72	77	11	9	4	1	9	13	5	3	2	0	1	4		
Auckland- Henderson-Massey	Year 1	0	0	3	5	2	3	0	0	1	0	0	0	0	0	1	0	0	0		
	Year 2	3	2	4	8	6	3	0	0	0	0	0	0	0	0	0	0	0	0		
	Year 3	11	5	3	5	8	9	1	1	1	0	1	1	1	0	0	0	0	0		
	Year 4	9	7	1	13	8	19	1	2	1	3	1	2	0	0	1	0	0	1		
	Year 5	4	13	9	8	9	17	0	2	2	3	3	0	0	1	0	1	1	0		
	Year 6	8	9	19	26	17	17	3	3	4	3	3	1	1	0	2	1	1	0		
	Year 7	55	28	34	72	58	46	14	6	8	8	10	3	7	2	3	3	3	1		
	Year 8	87	95	37	84	47	82	21	14	15	13	13	13	4	4	4	2	6	2		
	Total	177	159	110	221	155	196	40	28	32	30	31	20	13	7	11	7	11	4		
Auckland- Hibiscus and Bays	Year 1	0	1	3	3	0	1	0	0	0	0	1	0	0	0	0	0	1	0		
	Year 2	1	1	1	5	4	6	0	0	1	0	0	0	0	0	0	0	0	0		
	Year 3	1	1	6	0	11	5	0	0	0	0	1	2	0	0	0	0	0	1		
	Year 4	6	3	4	2	2	10	2	0	0	1	0	1	1	0	0	1	0	1		
	Year 5	1	1	1	6	12	6	0	0	1	1	1	1	0	0	0	0	1	1		
	Year 6	5	5	12	1	7	12	0	0	1	1	1	2	0	0	0	0	0	1		
	Year 7	9	28	18	11	24	23	1	0	3	4	2	3	0	0	0	0	1	1		
	Year 8	33	19	21	18	24	42	1	3	5	3	2	8	0	0	2	2	1	2		
	Total	56	59	66	46	84	105	4	3	11	10	8	17	1	0	2	3	4	7		
Auckland- Howick	Year 1	0	3	1	3	3	8	0	0	0	0	0	0	0	0	0	0	0	0		
	Year 2	5	3	2	2	2	9	1	0	0	1	0	0	0	0	0	1	0	0		
	Year 3	3	5	2	3	2	2	1	0	0	2	0	0	0	0	0	1	0	0		
	Year 4	9	6	6	2	5	7	0	1	1	0	0	0	0	0	0	0	0	0		
	Year 5	3	6	6	6	10	7	2	0	0	0	0	0	2	0	0	0	0	0		
	Year 6	5	6	4	10	14	5	0	0	0	0	0	0	0	0	0	0	0	0		
	Year 7	18	7	8	6	8	14	1	0	1	0	1	0	0	0	1	0	1	0		
	Year 8	12	30	10	20	18	17	1	2	1	2	1	2	1	1	1	1	1	1		
	Total	55	66	39	52	62	69	6	3	3	5	2	2	3	1	2	3	2	1		
Auckland- Kaipatiki	Year 1	0	1	0	1	2	5	0	0	0	0	0	1	0	0	0	0	0	0		
	Year 2	0	2	1	3	6	2	0	0	0	0	1	1	0	0	0	0	1	0		
	Year 3	1	4	8	12	8	9	0	0	1	2	1	1	0	0	1	2	1	0		
	Year 4	0	3	7	4	6	17	0	0	0	3	0	1	0	0	0	1	0	0		
	Year 5	4	8	6	11	14	5	0	0	2	2	0	2	0	0	1	0	0	0		
	Year 6	6	16	13	13	19	35	1	6	5	0	5	6	0	2	1	0	2	4		
	Year 7	10	18	34	28	24	29	1	7	8	1	2	3	0	2	2	1	2	1		
	Year 8	22	54	73	84	87	107	3	13	16	9	9	16	1	4	5	5	6	6		
	Auckland- Mangere-Otahuhu	Year 1	0	1	0	0	2	0	0	0	0	0	0	0	0	0	0	0	0	0	
Year 2		0	0	0	1	1	2	0	0	0	0	0	0	0	0	0	0	0	0		
Year 3		0	3	0	4	3	3	0	0	0	0	0	0	0	0	0	0	0	0		
Year 4		2	2	2	6	4	8	1	0	0	1	1	0	0	0	0	1	0	0		
Year 5		4	2	3	4	7	13	0	0	0	0	0	1	0	0	0	0	0	0		
Year 6		9	7	3	4	5	13	1	0	0	1	0	0	1	0	0	0	0	0		
Year 7		28	11	26	16	11	24	1	1	2	3	1	4	0	0	2	1	0	1		
Year 8		41	35	36	28	32	27	9	6	4	5	7	2	3	4	2	4	4	2		
Total		84	61	70	63	65	90	12	7	6	10	9	7	4	4	4	6	4	3		
Auckland- Manurewa	Year 1	7	6	5	5	4	6	0	0	1	0	0	0	0	0	0	1	0	0		
	Year 2	8	13	16	16	7	14	0	0	1	3	2	2	0	0	1	0	0	2		
	Year 3	10	15	20	11	13	21	0	4	1	2	1	2	0	0	0	1	1	2		
	Year 4	23	18	16	24	27	36	1	4	1	4	1	4	0	3	0	1	1	2		
	Year 5	15	20	18	17	25	31	3	3	3	5	2	4	2	3	1	2	0	3		
	Year 6	29	12	22	2																

	Year 7	7	1	4	3	4	2	1	0	1	0	0	0	1	0	0	0	0	0	
	Year 8	11	10	10	12	14	9	0	0	1	2	0	2	0	0	0	1	0	0	
	Total	27	24	19	26	30	27	2	1	3	5	1	3	1	1	1	3	0	0	
	Year 1	0	0	0	1	2	1	1	0	0	0	0	0	0	0	0	0	0	0	
	Year 2	4	1	1	0	2	1	0	0	0	0	0	0	0	0	0	0	0	0	
	Year 3	4	6	0	5	6	1	1	0	0	1	0	0	0	0	0	0	1	0	0
	Year 4	4	1	4	1	5	5	1	0	0	0	0	4	0	0	0	0	0	2	
	Year 5	8	3	9	2	5	8	0	3	1	1	0	1	0	1	0	0	0	1	
	Year 6	1	3	10	7	6	9	2	0	1	1	2	1	2	0	1	0	2	1	
	Year 7	9	9	25	21	52	53	0	2	6	2	7	5	0	2	3	0	2	2	
Year 8	36	8	14	25	50	59	2	6	2	5	7	15	0	2	2	4	1	3		
Total	66	31	63	62	128	137	7	11	10	10	16	26	2	5	6	5	5	9		
Auckland- Otara-Papatoetoe	Year 1	0	0	0	1	2	1	1	0	0	0	0	0	0	0	0	0	0	0	
	Year 2	0	1	4	11	10	19	0	0	1	1	0	0	0	0	0	1	0	0	
	Year 3	3	3	6	12	15	33	0	0	2	0	2	3	0	0	0	0	1	3	
	Year 4	11	11	19	15	16	24	0	2	1	2	0	2	0	1	1	2	0	2	
	Year 5	10	29	6	29	17	23	2	2	1	0	2	4	1	2	0	0	0	1	
	Year 6	11	22	32	18	26	23	1	2	2	2	5	1	1	0	2	1	2	0	
	Year 7	20	12	17	10	31	50	9	3	3	1	10	13	3	2	0	0	4	5	
	Year 8	19	36	31	32	36	41	12	10	4	7	9	19	4	4	1	0	6	4	
	Total	74	114	116	127	157	215	24	19	14	14	28	42	9	9	4	4	13	15	
	Auckland- Papakura	Year 1	0	0	1	0	6	2	0	0	0	1	0	0	0	0	0	0	0	0
Year 2		0	1	4	11	10	19	0	0	1	1	0	0	0	0	0	1	0	0	
Year 3		3	3	6	12	15	33	0	0	2	0	2	3	0	0	0	0	1	3	
Year 4		11	11	19	15	16	24	0	2	1	2	0	2	0	1	1	2	0	2	
Year 5		10	29	6	29	17	23	2	2	1	0	2	4	1	2	0	0	0	1	
Year 6		11	22	32	18	26	23	1	2	2	2	5	1	1	0	2	1	2	0	
Year 7		20	12	17	10	31	50	9	3	3	1	10	13	3	2	0	0	4	5	
Year 8		19	36	31	32	36	41	12	10	4	7	9	19	4	4	1	0	6	4	
Total		74	114	116	127	157	215	24	19	14	14	28	42	9	9	4	4	13	15	
Auckland- Puketapapa		Year 1	0	1	1	0	0	1	0	0	0	0	0	1	0	0	0	0	0	0
	Year 2	1	0	4	1	0	1	0	0	0	0	0	0	0	0	0	0	0	0	
	Year 3	4	0	6	2	7	3	0	0	0	0	0	0	0	0	0	0	0	0	
	Year 4	0	4	0	4	9	8	1	1	0	0	2	0	1	0	0	0	1	0	
	Year 5	1	0	1	3	5	8	0	0	2	0	0	2	0	0	1	0	0	1	
	Year 6	4	0	0	5	6	7	0	1	0	0	0	0	0	0	0	0	0	0	
	Year 7	4	15	4	5	14	21	0	2	0	1	1	2	0	2	0	0	1	1	
	Year 8	15	11	6	22	8	24	3	2	1	1	1	4	0	0	1	0	1	2	
	Total	29	31	22	42	49	73	4	6	3	2	4	9	1	2	2	0	3	4	
	Auckland- Rodney	Year 1	0	3	3	4	0	4	0	0	0	0	0	0	0	0	0	0	0	0
Year 2		3	0	5	3	9	5	0	0	0	2	0	0	0	0	0	0	0	0	
Year 3		2	3	2	2	2	3	1	0	0	1	0	1	1	0	0	0	0	1	
Year 4		7	4	4	5	5	10	1	0	0	2	0	0	1	0	0	1	0	0	
Year 5		5	12	18	4	4	6	1	1	0	0	0	0	0	0	0	0	0	0	
Year 6		3	7	5	7	6	5	0	0	1	0	0	3	0	0	1	0	0	2	
Year 7		12	5	15	2	8	5	3	1	8	3	3	5	1	0	1	1	1	0	
Year 8		19	17	8	7	15	15	7	3	1	2	3	8	3	2	1	0	1	2	
Total		51	51	60	34	49	53	13	5	10	10	6	17	6	2	3	2	2	5	
Auckland- Upper Harbour		Year 1	0	1	1	0	2	7	0	0	0	0	0	2	0	0	0	0	0	1
	Year 2	2	0	4	1	6	4	0	0	1	0	0	1	0	0	1	0	0	1	
	Year 3	5	0	2	2	6	8	0	0	0	0	0	1	0	0	0	0	0	0	
	Year 4	0	2	0	1	4	11	0	0	0	0	1	1	0	0	0	0	1	1	
	Year 5	0	3	3	0	2	2	0	0	1	0	2	0	0	0	0	0	1	0	
	Year 6	0	2	6	6	2	3	0	0	0	0	0	1	0	0	0	0	0	1	
	Year 7	2	4	4	8	6	8	0	0	0	0	0	1	0	0	0	0	0	1	
	Year 8	4	7	8	10	3	7	0	1	1	0	1	0	0	1	0	0	0	0	
	Total	13	19	28	28	31	50	0	1	3	0	4	7	0	1	1	0	2	5	
	Auckland- Waiheke	Year 1	0	0	0	0	0	2	0	0	0	0	0	0	0	0	0	0	0	0
Year 2		0	0	0	1	1	4	0	0	1	0	0	0	0	0	0	0	0	0	
Year 3		0	0	1	0	0	1	0	0	0	1	0	0	0	0	0	1	0	0	
Year 4		0	0	1	0	0	0	0	0	0	0	0	0	0	0	0	0	0	0	
Year 5		3	2	1	1	4	3	0	2	0	0	0	1	0	0	0	0	0	0	
Year 6		0	5	3	1	2	1	0	1	0	0	0	0	0	0	0	0	0	0	
Year 7		6	0	0	0	0	1	0	0	1	0	0	0	0	0	0	0	0	0	
Year 8		1	2	0	1	2	0	0	0	0	2	1	0	0	0	0	0	1	0	
Total		10	9	6	4	9	12	0	3	2	3	1	1	0	0	0	1	1	0	
Auckland- Waitakere Ranges		Year 1	0	0	1	0	0	1	0	0	0	0	0	0	0	0	0	0	0	0
	Year 2	1	1	1	1	0	1	0	0	0	0	0	0	0	0	0	0	0	0	
	Year 3	2	1	1	5	5	8	0	0	0	0	0	1	0	0	0	0	0	1	
	Year 4	6	1	4	6	4	4	0	0	0	1	0	0	0	0	0	1	0	0	
	Year 5	3	5	8	5	6	17	0	0	0	0	2	1	0	0	0	0	0	0	
	Year 6	3	5	14	4	0	16	0	0	1	0	0	1	0	0	1	0	0	1	
	Year 7	11	3	4	11	2	2	1	2	1	1	1	1	0	0	0	1	0	0	
	Year 8	14	9	10	4	4	5	5	1	4	4	1	0	2	0	1	0	0	0	
	Total	40	25	43	36	21	54	6	3	6	6	4	4	2	0	2	2	0	2	
	Auckland- Waitemata	Year 1	0	0	0	2	1	0	0	0	0	0	0	0	0	0	0	0	0	0
Year 2		0	0	1	0	0	1	0	0	0	0	0	0	0	0	0	0	0	0	
Year 3		0	2	0	0	1	0	0	0	0	0	0	0	0	0	0	0	0	0	
Year 4		0	0	2	0	2	2	0	0	0	0	0	1	0	0	0	0	0	0	
Year 5		0	1	2	5	1	0	0	0	0	0	0	0	0	0	0	0	0	0	
Year 6		0	0	2	0	1	1	0	0	1	0	0	0	0	0	0	0	0	0	
Year 7		3	12	2	9	7	8	0	0	0	0	0	0	0	0	0	0	0	0	
Year 8		4	3	7	8	9	3	4	0	0	0	0	0	1	0	0	0	0	0	
Total		7	18	16	24	22	15	4	0	1	0	0	1	1	0	0	0	0	0	
Auckland- Whau		Year 1	0	3	2	0	1	3												

Central Otago District	Total	17	22	14	13	13	12	4	2	2	8	3	5	0	0	1	3	2	1
	Year 1	0	0	0	0	1	0	0	0	0	0	0	0	0	0	0	0	0	0
	Year 2	1	0	2	0	2	1	0	0	0	0	0	0	0	0	0	0	0	0
	Year 3	0	0	2	0	0	0	0	0	0	0	0	0	0	0	0	0	0	0
	Year 4	0	0	0	3	6	0	0	0	0	0	0	0	0	0	0	0	0	0
	Year 5	0	0	0	2	4	5	0	0	0	0	0	0	0	0	0	0	0	0
	Year 6	1	0	0	0	1	2	0	0	0	0	0	0	0	0	0	0	0	0
	Year 7	0	0	0	3	0	3	0	0	0	0	1	0	0	0	0	0	0	0
	Year 8	0	1	8	2	6	22	0	1	1	0	0	4	0	1	0	0	0	2
Chatham Islands Territory	Total	2	1	12	10	20	33	0	1	1	0	1	4	0	1	0	0	0	2
	Year 6	0	1	0	0	0	2	0	0	0	0	0	0	0	0	0	0	0	0
	Year 7	0	0	1	1	1	0	1	0	0	0	1	0	0	0	0	0	0	0
Christchurch City	Total	0	1	1	1	0	3	0	0	0	0	1	0	0	0	0	0	0	0
	Year 1	20	16	15	22	26	58	2	2	1	2	4	4	1	0	1	1	0	2
	Year 2	21	46	33	30	102	97	4	2	1	2	10	8	2	1	0	1	4	3
	Year 3	40	46	69	62	82	130	5	9	2	4	5	17	2	2	2	2	1	5
	Year 4	30	56	57	76	120	126	4	2	8	4	7	12	2	1	4	2	4	2
	Year 5	55	47	72	63	135	158	4	9	6	6	9	17	0	4	1	4	4	10
	Year 6	89	82	71	68	103	174	5	12	8	6	10	11	0	8	4	3	3	6
	Year 7	106	113	80	81	118	106	13	14	9	9	13	19	7	5	4	5	7	11
	Year 8	155	141	123	102	121	154	17	31	20	14	22	23	5	7	6	6	11	5
Clutha District	Total	516	547	520	504	807	1003	54	81	55	47	80	111	19	28	22	24	34	44
	Year 1	0	0	0	1	0	1	0	0	0	0	0	0	0	0	0	0	0	0
	Year 2	0	0	0	1	1	1	0	0	0	0	0	0	0	0	0	0	0	0
	Year 3	1	0	0	0	1	5	0	0	0	0	0	0	0	0	0	0	0	0
	Year 4	3	0	0	1	3	0	0	0	0	0	0	0	0	0	0	0	0	0
	Year 5	1	2	2	0	6	0	0	1	0	0	0	1	0	1	0	0	0	0
	Year 6	1	4	3	0	6	7	0	0	1	0	0	1	0	0	1	0	0	1
	Year 7	4	0	3	3	3	2	0	0	1	0	0	1	0	0	0	0	0	0
	Year 8	22	5	3	1	9	5	4	0	0	0	1	0	2	0	0	0	0	0
Dunedin City	Total	32	11	11	7	29	21	4	1	2	0	1	3	2	1	1	0	0	1
	Year 1	4	5	1	3	14	34	0	0	0	0	0	3	0	0	0	0	0	0
	Year 2	23	26	9	4	29	29	3	4	3	0	2	3	1	3	1	0	1	1
	Year 3	12	17	9	33	19	41	0	0	1	1	2	5	0	0	1	1	0	1
	Year 4	6	11	23	12	23	32	0	0	5	1	3	2	0	0	3	1	0	1
	Year 5	26	13	19	25	33	29	4	2	0	1	2	0	2	1	0	0	0	0
	Year 6	20	37	17	34	39	29	3	3	2	2	3	2	2	3	1	0	1	1
	Year 7	6	18	33	14	40	55	2	2	4	3	7	7	0	1	2	1	2	4
	Year 8	34	27	39	29	36	77	2	7	4	3	7	9	1	3	1	1	0	3
Far North District	Total	131	154	150	154	233	326	14	18	19	11	26	31	6	11	9	4	4	11
	Year 1	0	1	1	1	1	1	0	0	0	0	0	0	0	0	0	0	0	0
	Year 2	6	1	1	4	6	3	0	0	0	0	0	0	0	0	0	0	0	0
	Year 3	4	2	4	2	9	19	1	1	1	0	2	0	0	1	0	0	0	0
	Year 4	7	9	10	9	11	14	0	0	1	0	1	0	0	0	1	0	1	0
	Year 5	5	9	11	15	14	19	1	1	0	0	0	1	0	0	0	0	0	0
	Year 6	11	16	16	34	27	22	0	5	2	0	3	2	0	0	0	0	2	0
	Year 7	30	34	32	48	37	53	5	3	4	9	5	9	2	2	1	1	1	0
	Year 8	41	37	59	79	52	52	9	6	9	21	10	19	1	0	4	6	0	1
Gisborne District	Total	104	109	134	192	157	183	16	16	17	30	21	31	3	3	6	7	4	1
	Year 1	3	0	1	0	3	2	0	0	0	0	0	0	0	0	0	0	0	0
	Year 2	3	4	1	6	1	5	0	1	0	1	0	1	0	0	0	0	0	0
	Year 3	11	9	2	1	13	14	1	1	3	0	3	1	0	0	1	0	0	0
	Year 4	13	4	11	8	12	25	2	2	2	3	3	6	1	2	1	1	1	0
	Year 5	14	11	11	12	16	9	4	2	4	2	1	2	2	2	2	1	1	0
	Year 6	19	21	14	14	30	12	6	11	2	4	1	3	0	3	0	0	0	0
	Year 7	15	9	41	20	13	29	5	4	13	4	1	6	1	2	4	2	1	4
	Year 8	16	20	23	59	43	43	6	17	4	11	10	8	0	6	2	5	6	3
Gore District	Total	94	78	104	120	131	139	24	38	28	25	19	27	4	15	10	9	9	7
	Year 1	5	2	1	3	0	1	0	0	0	0	0	0	0	0	0	0	0	0
	Year 2	1	0	1	4	10	2	0	0	0	0	0	0	0	0	0	0	0	0
	Year 3	0	0	3	8	6	3	0	0	0	1	2	0	0	0	0	0	1	0
	Year 4	6	4	6	4	6	6	1	1	0	1	1	0	1	1	0	1	1	0
	Year 5	3	2	10	3	3	4	0	1	1	2	0	3	0	0	1	0	0	1
	Year 6	8	5	11	6	5	6	1	0	2	2	0	1	1	0	2	1	0	0
	Year 7	0	2	4	7	0	1	0	0	0	1	1	0	0	0	0	0	0	0
	Year 8	12	3	11	7	13	14	0	0	0	2	9	2	0	0	0	1	3	2
Grey District	Total	35	18	47	42	43	37	2	2	3	9	13	6	2	1	3	3	5	3
	Year 1	0	3	0	0	1	3	0	0	0	0	0	0	0	0	0	0	0	0
	Year 2	0	0	2	0	1	1	0	0	0	0	0	0	0	0	0	0	0	0
	Year 3	0	3	0	6	2	10	0	0	0	0	0	0	0	0	0	0	0	0
	Year 4	0	0	0	2	12	14	0	0	0	0	0	1	0	0	0	0	0	0
	Year 5	3	2	3	4	4	8	0	0	0	2	0	2	0	0	0	0	0	1
	Year 6	1	0	5	1	1	5	0	0	0	0	1	0	0	0	0	0	1	0
	Year 7	9	2	4	10	8	9	0	0	0	2	0	3	0	0	0	2	0	1
	Year 8	5	4	9	8	19	12	2	0	1	0	3	2	2	0	0	0	0	0
Hamilton City	Total	18	14	23	31	48	62	2	0	1	4	4	8	2	0	0	2	1	2
	Year 1	1	5	4	7	4	6	1	1	0	0	0	0	1	0	0	0	0	0
	Year 2	1	1	11	11	17	18	0	0	0	0	3	0	0	0	0	0	2	0
	Year 3	13	11	15	37	30	28	2	0	1	0	0	4	0	0	0	0	0	2
	Year 4	47	15	16	23	45	47	6	0	0	1	1	5	1	0	0	1	0	2
	Year 5	15	19	18	33	30	67	2	3	2	2	3	3	1	2	1	1	1	2
	Year 6	26	23	42	38	36	48	4	0	7	0	4	1	2	0	2	0	2	1
	Year 7	72	66	42	65	68	103	6	14	2	12	10	15	1	2	0	6	4	3

	Year 7	15	9	8	19	17	20	2	1	1	4	1	0	2	1	1	1	1	0	
	Year 8	23	12	5	24	40	50	1	2	1	1	4	3	0	1	1	0	2	0	
	Total	134	63	36	66	88	152	11	6	8	7	8	8	7	2	3	2	4	3	
Hurunui District	Year 1	0	0	1	0	0	0	0	0	0	0	0	0	0	0	0	0	0	0	
	Year 2	0	0	0	1	0	0	0	0	0	0	0	0	0	0	0	0	0	0	
	Year 3	2	0	0	0	0	1	0	0	0	0	0	0	0	0	0	0	0	0	
	Year 4	0	6	5	0	0	1	0	2	1	0	0	0	0	0	0	0	0	0	
	Year 5	0	0	5	1	0	0	0	0	2	0	0	0	0	0	1	0	0	0	
	Year 6	1	0	0	6	2	0	0	0	0	3	0	0	0	0	0	1	0	0	
	Year 7	4	2	0	3	7	2	0	0	0	0	0	1	1	0	0	0	0	0	
	Year 8	1	8	2	0	1	2	0	2	0	0	0	3	0	1	0	0	0	0	
	Total	8	16	13	11	10	6	0	4	3	3	1	4	0	1	1	1	0	0	
Invercargill City	Year 1	3	0	5	3	3	7	0	0	1	1	1	3	0	0	0	1	1	2	
	Year 2	7	9	2	2	10	10	0	1	1	1	2	0	0	1	1	0	1	0	
	Year 3	6	9	10	9	11	12	0	3	1	1	1	2	0	2	1	1	1	1	
	Year 4	17	9	17	4	17	32	3	3	3	1	0	6	3	1	1	0	0	4	
	Year 5	6	8	11	13	15	12	1	1	2	2	1	4	1	1	1	2	0	0	
	Year 6	11	12	20	11	33	27	0	1	3	1	2	2	0	0	2	0	0	0	
	Year 7	12	22	11	21	26	34	2	1	2	3	2	2	0	0	0	1	0	0	
	Year 8	25	28	20	30	29	54	3	3	3	4	4	6	2	0	1	1	1	3	
	Total	87	97	96	93	144	188	9	13	16	14	13	25	6	5	7	6	4	10	
Kaikoura District	Year 1	0	0	0	4	0	0	0	0	0	2	0	0	0	0	0	0	0	0	
	Year 2	0	1	0	0	1	4	0	0	0	0	0	0	0	0	0	0	0	0	
	Year 3	1	0	0	0	0	0	0	0	0	0	1	0	0	0	0	0	1	0	
	Year 4	0	0	0	3	0	0	0	0	0	1	0	0	0	0	0	0	0	0	
	Year 5	0	0	0	0	0	4	0	0	0	0	0	0	0	0	0	0	0	0	
	Year 6	0	0	1	1	1	1	0	0	0	1	0	0	0	0	0	1	0	0	
	Year 7	0	3	2	0	0	1	0	3	1	0	0	0	0	1	0	0	0	0	
	Year 8	1	20	2	0	1	0	0	3	0	1	0	0	0	0	0	1	0	0	
	Total	2	24	5	8	3	10	0	6	1	5	1	0	0	1	0	2	1	0	
Kaipara District	Year 1	0	0	0	0	1	1	0	0	0	0	0	0	0	0	0	0	0	0	
	Year 2	1	1	0	0	1	1	1	0	0	0	0	0	1	0	0	0	0	0	
	Year 3	4	0	0	1	1	5	0	0	0	0	0	0	0	0	0	0	0	0	
	Year 4	3	1	4	0	2	4	0	0	0	1	0	0	0	0	0	0	0	0	
	Year 5	3	1	0	6	1	3	1	0	0	0	2	0	0	0	0	0	1	0	
	Year 6	6	2	6	12	12	4	4	1	0	0	0	0	3	1	0	0	0	0	
	Year 7	8	8	10	8	4	6	1	0	0	0	0	0	0	0	0	0	0	0	
	Year 8	15	17	22	14	10	11	1	1	4	2	2	0	0	0	1	0	2	0	
	Total	40	30	42	41	32	35	8	2	4	3	4	0	4	1	1	0	3	0	
Kapiti Coast District	Year 1	1	1	3	0	2	1	0	0	0	0	0	0	0	0	0	0	0	0	
	Year 2	0	2	2	4	0	9	0	0	0	1	0	2	0	0	0	0	0	0	
	Year 3	3	7	1	0	12	7	0	1	0	0	1	0	0	0	0	0	0	0	
	Year 4	5	4	8	8	2	9	1	2	1	2	0	1	1	1	0	0	0	1	
	Year 5	2	14	9	7	5	6	0	0	1	2	0	1	0	0	1	2	0	1	
	Year 6	15	9	7	11	7	7	1	2	1	2	1	1	1	1	0	1	1	0	
	Year 7	6	12	13	7	16	14	0	1	2	1	3	1	0	1	1	0	2	1	
	Year 8	13	12	27	17	17	34	0	1	3	0	1	2	0	0	0	0	0	0	
	Total	45	61	70	54	61	87	2	7	8	8	6	8	2	3	2	3	3	3	
Kawerau District	Year 3	1	0	0	0	0	0	0	0	0	0	0	1	0	0	0	0	0	0	
	Year 4	0	1	0	1	0	1	0	0	0	0	0	0	0	0	0	0	0	0	
	Year 5	1	0	1	0	0	2	0	0	0	0	0	0	0	0	0	0	0	0	
	Year 6	2	0	0	1	1	2	0	0	0	0	0	0	0	0	0	0	0	0	
	Year 7	6	1	1	6	5	7	0	0	0	1	3	3	0	0	0	0	1	1	
	Year 8	12	1	2	10	4	10	3	2	3	4	4	4	2	0	1	1	1	1	
	Total	22	3	4	18	10	22	3	2	3	5	7	8	2	0	1	1	2	2	
	Lower Hutt City	Year 1	5	1	2	0	2	5	1	0	0	0	0	0	0	0	0	0	0	0
		Year 2	1	4	0	1	6	6	0	1	0	0	0	0	0	1	0	0	0	0
Year 3		3	5	4	7	20	4	0	0	0	0	1	0	0	0	0	0	0	0	
Year 4		4	5	8	7	13	16	0	0	0	0	1	1	0	0	0	0	1	0	
Year 5		18	9	4	16	14	8	0	0	0	0	0	0	0	0	0	0	0	0	
Year 6		15	28	16	11	17	25	4	0	2	2	2	1	2	0	0	0	0	0	
Year 7		17	7	19	7	6	20	0	1	1	0	0	0	0	0	0	0	0	0	
Year 8		22	15	19	23	25	18	2	2	4	0	1	0	1	2	2	0	0	0	
Total		85	74	72	72	103	102	7	4	7	2	5	2	3	3	2	0	1	0	
Mackenzie District	Year 2	0	0	0	1	0	0	0	0	0	0	0	0	0	0	0	0	0	0	
	Year 3	1	0	0	1	0	0	0	0	0	0	0	0	0	0	0	0	0	0	
	Year 4	1	1	0	0	0	0	0	0	0	0	0	0	0	0	0	0	0	0	
	Year 5	2	1	0	0	1	0	0	0	0	0	0	1	0	0	0	0	0	1	
	Year 6	3	2	0	0	0	1	1	1	0	0	0	0	0	1	0	0	0	0	
	Year 7	0	3	0	0	0	0	0	1	0	0	0	0	0	0	0	0	0	0	
	Year 8	0	0	1	0	1	1	0	1	0	0	0	0	0	0	0	0	0	0	
	Total	7	7	1	2	2	2	1	3	0	0	0	1	0	1	0	0	0	1	
	Manawatu District	Year 1	0	0	0	0	0	1	0	0	0	0	0	0	0	0	0	0	0	0
Year 2		0	0	0	3	0	1	0	1	0	0	0	0	0	0	0	0	0	0	
Year 3		1	3	4	1	6	5	0	0	0	0	2	0	0	0	0	0	0	0	
Year 4		0	5	7	11	5	16	0	1	0	3	1	2	0	0	0	1	0	2	
Year 5		6	0	13	11	10	8	0	0	0	0	4	2	0	0	0	0	3	0	
Year 6		7	5	2	11	14	11	1	1	0	0	7	1	0	0	0	0	2	0	
Year 7		2	6	5	4	12	16	0	0	0	0	0	0	0	0	0	0	0	0	
Year 8		4	13	3	6	10	19	0	2	1	1	2	3	0	0	1	1	1	1	
Total		20	32	34	47	57	77	1	5	1	4	16	8	0	0	1	2	6	3	
Marlborough District	Year 1	1	0	2	0	1	3	0	0	0	0	0	0	0	0	0	0	0	0	
	Year 2	1	0	0	0	1	2	0	0	0	0	0	0	0	0	0	0	0	0	
	Year 3	3	4	2	2	0	1	0	0	0	0	0	0	0	0	0	0	0	0	
	Year 4	0	2	6	2	4	0	0	0	0	2									

Napier City	Year 1	1	1	0	2	3	5	0	0	0	0	0	1	0	0	0	0	0	1
	Year 2	2	4	1	3	2	7	0	0	0	1	0	0	0	0	0	0	0	0
	Year 3	4	7	2	5	9	5	0	0	0	1	1	1	0	0	0	0	0	0
	Year 4	4	7	5	6	12	20	0	2	2	0	1	0	0	1	2	0	1	0
	Year 5	5	7	16	10	9	13	0	0	2	1	1	0	0	0	2	1	1	0
	Year 6	13	11	20	17	3	13	0	1	1	4	0	2	0	0	0	3	0	1
	Year 7	17	11	13	14	33	24	3	7	4	2	10	1	2	2	1	0	3	0
	Year 8	29	13	25	16	47	42	13	7	9	3	10	10	4	3	5	1	6	3
	Total	75	61	82	73	118	129	16	17	18	12	23	15	6	6	10	5	11	5
Nelson City	Year 1	0	0	0	0	1	1	0	0	0	0	0	0	0	0	0	0	0	0
	Year 2	0	0	5	0	2	7	0	0	2	0	0	0	0	0	2	0	0	0
	Year 3	0	0	1	1	2	4	0	0	0	0	0	1	0	0	0	0	0	1
	Year 4	0	2	2	3	6	7	0	0	0	0	0	1	0	0	0	0	0	1
	Year 5	2	1	8	0	3	13	0	1	0	1	1	1	0	0	0	1	1	1
	Year 6	2	2	7	2	3	17	1	0	0	0	0	3	1	0	0	0	0	1
	Year 7	3	8	2	4	24	6	0	0	0	0	0	0	0	0	0	0	0	0
	Year 8	9	13	12	13	6	29	0	2	0	0	0	3	0	2	0	0	0	3
	Total	16	26	37	23	47	84	1	3	2	1	1	9	1	2	2	1	1	7
New Plymouth District	Year 1	0	0	2	1	0	2	0	0	0	0	0	0	0	0	0	0	0	0
	Year 2	0	2	0	3	0	8	0	0	0	0	0	0	0	0	0	0	0	0
	Year 3	1	2	6	2	1	4	0	0	2	3	0	2	0	0	0	0	0	2
	Year 4	3	5	4	6	5	19	0	0	0	3	4	2	0	0	0	1	2	1
	Year 5	3	8	11	6	12	28	1	1	0	1	1	3	1	1	0	1	1	2
	Year 6	10	9	6	7	17	26	4	2	0	3	1	5	2	1	0	2	1	1
	Year 7	23	20	8	20	32	24	1	8	0	2	2	0	1	1	0	1	1	0
	Year 8	27	21	15	18	45	52	4	5	6	2	3	5	3	3	2	0	0	2
	Total	67	67	52	63	112	163	10	16	8	14	11	17	7	6	2	5	5	8
Opotiki District	Year 1	2	0	0	0	1	1	0	0	0	0	0	0	0	0	0	0	0	0
	Year 2	1	0	1	2	0	0	0	0	0	0	0	0	0	0	0	0	0	0
	Year 4	0	0	1	0	0	0	0	0	0	0	0	0	0	0	0	0	0	0
	Year 5	0	2	0	0	1	1	0	0	0	0	1	0	0	0	0	0	0	0
	Year 6	0	0	0	0	0	1	0	0	0	0	0	0	0	0	0	0	0	0
	Year 7	1	1	0	2	0	2	0	0	0	0	0	0	0	0	0	0	0	0
	Year 8	1	2	1	1	0	5	0	1	0	0	0	0	0	0	0	0	0	0
	Total	5	5	3	5	2	10	0	1	0	0	1	0	0	0	0	0	0	0
	Otorohanga District	Year 1	0	0	0	0	1	0	0	0	0	0	0	0	0	0	0	0	0
Year 2		0	0	0	0	0	1	0	0	0	0	0	0	0	0	0	0	0	0
Year 3		3	0	2	0	0	1	0	0	0	0	0	0	0	0	0	0	0	0
Year 4		2	5	2	3	0	0	0	0	0	2	0	0	0	0	0	0	1	0
Year 5		7	1	0	1	3	5	0	0	0	0	0	0	0	0	0	0	0	0
Year 6		1	3	2	5	2	14	0	0	1	0	0	2	0	0	1	0	0	0
Year 7		3	1	3	9	7	7	0	0	0	1	0	2	0	0	0	0	0	1
Year 8		4	7	3	9	5	7	1	0	0	2	0	0	0	0	0	2	0	0
Total		20	17	12	27	18	35	1	0	1	5	0	4	0	0	1	3	0	1
Palmerston North City	Year 1	3	0	4	3	3	8	0	1	0	0	0	0	0	0	0	0	0	0
	Year 2	3	4	1	9	9	13	1	1	0	0	0	0	0	0	0	0	0	0
	Year 3	5	10	4	7	12	27	0	0	0	2	0	2	0	0	0	1	0	1
	Year 4	13	5	3	5	33	20	0	0	3	0	2	2	0	0	1	0	1	2
	Year 5	13	21	7	5	13	37	1	1	0	0	1	7	0	0	0	0	1	6
	Year 6	20	28	19	12	8	24	1	2	0	4	0	3	1	1	0	2	0	1
	Year 7	38	35	33	24	29	23	6	2	7	6	5	5	3	1	2	3	1	1
	Year 8	81	71	58	27	31	47	14	5	9	7	7	13	3	3	2	2	1	3
	Total	176	174	129	92	138	199	23	12	19	19	15	32	7	5	5	8	4	14
Porirua City	Year 1	0	0	1	0	1	0	0	0	0	0	0	0	0	0	0	0	0	0
	Year 2	1	1	2	0	1	2	0	0	0	0	0	0	0	0	0	0	0	0
	Year 3	0	2	4	3	4	10	0	0	1	0	0	1	0	0	0	0	0	0
	Year 4	2	0	0	2	7	6	0	0	0	0	1	5	0	0	0	0	0	1
	Year 5	8	2	3	3	10	10	2	0	0	0	4	8	1	0	0	0	0	1
	Year 6	19	9	5	10	10	13	4	1	2	0	3	1	1	1	0	0	0	0
	Year 7	12	15	18	11	21	4	2	1	5	8	5	5	2	0	0	0	1	1
	Year 8	21	12	18	22	26	19	5	2	2	9	16	12	3	1	1	3	5	1
	Total	63	41	51	51	80	64	13	4	10	17	29	32	7	2	1	3	6	4
Queenstown-Lakes District	Year 1	0	0	0	0	0	0	0	0	0	1	0	0	0	0	0	0	0	0
	Year 2	0	1	0	0	0	0	0	0	0	0	0	0	0	0	0	0	0	0
	Year 3	0	0	0	1	0	4	0	0	0	2	0	1	0	0	0	1	0	0
	Year 4	0	0	1	1	7	4	0	0	0	0	0	0	0	0	0	0	0	0
	Year 5	0	0	1	0	1	8	0	0	0	0	0	0	0	0	0	0	0	0
	Year 6	3	0	1	0	3	4	0	0	0	0	0	0	0	0	0	0	0	0
	Year 7	1	3	0	2	3	2	0	0	1	1	0	1	0	0	0	1	0	1
	Year 8	2	2	1	0	2	1	0	0	0	1	1	0	0	0	0	0	1	1
	Total	6	6	4	4	16	23	0	0	1	4	1	3	0	0	0	2	1	2
Rangitikei District	Year 1	0	1	0	0	0	0	0	0	0	0	0	0	0	0	0	0	0	0
	Year 2	6	0	1	0	0	0	0	0	0	0	0	0	0	0	0	0	0	0
	Year 3	0	1	1	2	0	3	0	0	0	1	0	0	0	0	0	0	0	0
	Year 4	0	0	3	1	0	2	1	0	1	0	0	0	1	0	1	0	0	0
	Year 5	7	3	0	4	1	7	0	0	0	1	0	1	0	0	0	1	0	1
	Year 6	1	2	3	2	0	4	0	0	0	0	0	0	0	0	0	0	0	0
	Year 7	6	6	4	4	1	5	0	0	1	1	0	0	0	0	1	0	0	0
	Year 8	17	7	5	4	1	3	1	3	0	1	0	0	0	0	0	0	0	0
	Total	37	20	17	17	3	24	2	3	2	4	0	1	1	0	2	1	0	1
Rotorua District	Year 1	0	2	6	8	1	3	0	0	0	1	1	0	0	0	0	1	0	0
	Year 2	3	1	1	6	6	6	0	0	0	1	0	0	0	0	0	1	0	0
	Year 3	6	3	8	4	15	14	0	0	1	0	3	0	0	0	0	0	1	0
	Year 4	14	12	14	3	13	24	1	0	1	1	2	7	1	0	0	0	1	4
	Year 5	9	14	15	5	14	15	3	1	1	1	0	0	1	1	1	1	0	0
	Year 6																		

South Taranaki District	Year 2	1	2	6	4	3	0	0	0	0	1	0	0	0	0	0	1	0	0
	Year 3	2	0	16	4	8	3	0	0	0	2	0	0	0	0	0	2	0	0
	Year 4	1	4	7	5	4	5	0	0	0	1	0	0	0	0	0	1	0	0
	Year 5	10	6	3	7	9	5	2	0	0	0	0	2	0	0	0	0	0	1
	Year 6	2	13	4	5	6	9	0	3	1	0	2	0	0	0	0	0	0	0
	Year 7	3	8	12	7	5	17	1	2	0	1	0	0	0	0	0	0	0	0
	Year 8	9	7	25	9	11	26	5	1	1	1	1	1	2	0	0	0	0	1
	Total	28	40	73	42	46	67	8	6	2	6	3	3	2	0	0	4	0	2
	South Waikato District	Year 1	0	1	1	1	0	0	0	0	0	0	0	0	0	0	0	0	0
Year 2		0	1	1	2	2	0	0	0	0	0	0	0	0	0	0	0	0	0
Year 3		11	5	4	1	2	2	1	0	2	0	1	0	0	0	0	1	0	0
Year 4		7	5	14	7	8	14	2	1	0	1	2	2	2	1	0	0	0	0
Year 5		12	13	9	12	8	18	2	2	2	1	1	4	0	1	0	1	0	1
Year 6		7	17	8	6	8	6	0	1	2	0	1	0	0	1	0	0	0	0
Year 7		6	8	11	13	9	8	3	4	4	5	1	5	2	1	1	2	0	3
Year 8		14	8	11	21	22	7	5	7	2	3	4	3	3	1	1	1	1	2
Total		57	58	59	63	59	55	13	15	12	10	10	14	7	5	3	4	1	6
South Wairarapa District	Year 1	0	1	0	0	0	0	0	0	0	0	0	0	0	0	0	0	0	0
	Year 2	0	0	1	0	0	0	0	0	0	0	0	0	0	0	0	0	0	0
	Year 3	2	0	0	1	0	0	0	0	0	1	0	0	0	0	0	1	0	0
	Year 4	1	2	0	0	1	4	0	0	0	0	0	0	0	0	0	0	0	0
	Year 5	3	0	3	2	3	0	0	0	0	0	0	0	0	0	0	0	0	0
	Year 6	2	0	0	0	2	10	1	1	0	0	1	2	0	1	0	0	1	1
	Year 7	9	3	3	2	4	6	0	0	2	0	1	0	0	0	1	0	0	0
	Year 8	4	8	4	0	4	8	0	1	2	0	0	2	0	0	1	0	0	1
	Total	21	14	11	5	14	28	1	2	4	1	2	4	0	1	2	1	1	2
Southland District	Year 1	0	2	0	0	2	1	0	2	0	0	0	0	0	0	0	0	0	0
	Year 2	0	2	1	0	4	2	0	0	0	0	0	0	0	0	0	0	0	0
	Year 3	3	1	1	1	2	6	0	0	0	0	0	0	0	0	0	0	0	0
	Year 4	2	1	3	5	2	5	0	0	0	0	0	0	0	0	0	0	0	0
	Year 5	2	5	5	7	11	8	1	0	0	0	2	0	0	0	0	0	1	0
	Year 6	0	7	3	9	0	27	0	0	0	0	0	3	0	0	0	0	0	2
	Year 7	8	6	2	10	21	17	0	0	0	0	1	4	0	0	0	0	1	1
	Year 8	7	8	5	1	9	23	0	3	1	0	1	6	0	0	0	0	0	3
	Total	22	32	20	33	51	89	1	5	1	0	4	13	0	0	0	0	2	6
Stratford District	Year 1	0	1	1	0	0	0	0	0	0	0	0	0	0	0	0	0	0	0
	Year 2	1	1	0	0	2	0	0	0	0	0	0	0	0	0	0	0	0	0
	Year 3	1	1	0	2	5	3	0	0	0	0	0	0	0	0	0	0	0	0
	Year 4	1	2	2	4	0	4	0	0	0	0	0	1	0	0	0	0	0	1
	Year 5	1	1	5	5	0	1	0	0	0	0	0	0	0	0	0	0	0	0
	Year 6	2	0	2	6	4	3	0	0	0	1	0	1	0	0	0	0	0	1
	Year 7	6	2	8	5	5	3	1	0	2	0	1	1	0	0	1	0	1	0
	Year 8	4	6	11	3	3	9	1	0	1	0	0	2	0	0	1	0	0	1
	Total	16	14	29	25	19	23	2	0	3	1	1	5	0	0	2	0	1	3
Taranui District	Year 1	1	0	0	0	0	1	0	0	0	0	0	0	0	0	0	0	0	0
	Year 3	2	1	1	0	0	2	0	0	0	0	0	1	0	0	0	0	0	0
	Year 4	0	1	1	0	0	7	0	0	0	0	0	3	0	0	0	0	0	0
	Year 5	1	2	1	3	1	7	1	0	0	0	0	0	1	0	0	0	0	0
	Year 6	2	1	2	3	2	2	1	2	0	1	2	0	0	1	0	1	1	0
	Year 7	13	7	9	3	1	1	3	0	2	1	2	0	3	0	1	0	1	0
	Year 8	7	7	8	4	5	7	0	1	1	0	0	2	0	0	0	0	0	1
	Total	26	19	22	13	9	27	5	3	3	2	4	6	4	1	1	1	2	1
	Tasman District	Year 1	0	0	1	1	1	0	0	0	0	0	0	0	0	0	0	0	0
Year 2		0	0	2	1	0	7	0	0	0	0	0	0	0	0	0	0	0	0
Year 3		1	4	3	5	3	1	0	0	0	3	0	0	0	0	0	2	0	0
Year 4		2	0	5	3	1	8	1	0	0	0	0	2	0	0	0	0	0	1
Year 5		6	3	0	6	7	5	0	0	0	0	1	0	0	0	0	0	1	0
Year 6		11	1	5	8	10	2	0	0	1	0	2	0	0	0	0	0	1	0
Year 7		4	3	2	3	7	7	1	0	2	0	0	0	1	0	1	0	0	0
Year 8		7	17	4	6	4	22	0	3	1	12	0	2	0	2	0	4	0	2
Total		31	28	22	33	33	52	2	3	4	15	3	4	1	2	1	6	2	3
Taupo District	Year 1	1	0	3	3	1	3	0	0	0	0	2	1	0	0	0	0	0	0
	Year 2	4	5	1	0	2	8	0	0	0	0	0	2	0	0	0	0	0	2
	Year 3	1	7	10	5	9	10	0	6	0	0	0	0	0	1	0	0	0	0
	Year 4	0	1	16	6	11	25	0	0	3	3	2	3	0	0	1	0	1	0
	Year 5	2	11	10	5	14	10	3	1	0	3	1	6	1	0	0	0	0	2
	Year 6	13	7	11	6	8	21	1	2	1	6	4	5	0	0	0	0	0	1
	Year 7	19	10	13	11	13	11	1	1	3	4	2	2	1	0	1	0	2	2
	Year 8	23	38	16	24	21	12	4	3	2	1	1	0	4	2	1	0	1	0
	Total	63	79	80	60	79	100	9	13	9	17	12	19	6	3	3	0	4	7
Tauranga City	Year 1	6	6	6	1	0	6	0	0	1	0	0	0	0	0	1	0	0	0
	Year 2	2	7	3	1	9	4	0	0	0	0	1	0	0	0	0	0	1	0
	Year 3	13	22	14	4	11	16	0	0	0	1	0	3	0	0	0	0	0	1
	Year 4	7	21	27	18	11	14	0	1	6	0	5	0	0	0	4	0	1	0
	Year 5	13	14	18	24	32	17	5	0	3	1	6	1	4	0	0	0	3	0
	Year 6	21	24	41	29	33	31	2	0	1	2	6	7	1	0	1	0	3	3
	Year 7	35	13	16	31	27	38	9	4	5	6	8	8	3	1	1	4	3	4
	Year 8	40	46	40	34	26	34	16	5	6	10	7	10	5	2	2	5	5	5
	Total	137	153	165	142	149	160	32	10	22	20	33	29	13	3	9	9	16	13
Thames-Coromandel District	Year 1	0	1	0	0	1	0	0	0	0	0	0	0	0	0	0	0	0	0
	Year 2	0	0	1	0	0	2	0	0	0	0	0	0	0	0	0	0	0	0
	Year 3	1	0	2	0	1	0	0	0	1	0	0	0	0	0	1	0	0	0
	Year 4	0	2	1	1	2	6	0	0	0	0	0	0	0	0	0	0	0	0
	Year 5	0	0	3	0	5	7	0	0	0	0	0	0	0	0	0	0	0	0
	Year 6	0	2	4	1	4	9	1	1	0	0	0	2	0	1	0	0		

Waikato District	Year 3	4	1	4	10	5	12	0	1	0	1	0	1	0	1	0	1	0	1	
	Year 4	10	6	4	9	6	9	0	0	0	1	0	1	0	0	0	0	0	0	
	Year 5	13	13	4	5	11	12	4	1	0	0	1	0	1	0	0	0	0	0	
	Year 6	13	13	12	17	11	29	2	2	0	0	0	0	3	1	1	0	0	0	
	Year 7	43	24	18	16	14	22	7	2	5	2	1	5	3	1	1	1	0	2	
	Year 8	45	23	29	41	24	57	11	4	1	5	5	5	5	5	1	0	3	1	0
	Total	131	81	71	103	77	152	25	10	6	11	7	16	10	4	1	5	2	3	
Waimakariri District	Year 1	1	0	0	2	1	5	0	0	0	0	1	0	2	0	0	0	0	1	
	Year 2	4	2	3	1	4	2	0	0	0	0	0	0	0	0	0	0	0	0	
	Year 3	4	1	4	8	6	4	1	0	0	1	0	0	1	0	0	0	0	0	
	Year 4	1	6	2	5	4	13	0	2	1	0	1	2	0	1	1	0	1	1	
	Year 5	1	3	3	2	24	13	1	0	2	1	0	2	0	0	0	1	0	2	
	Year 6	8	4	5	7	10	19	4	2	0	2	1	1	3	1	0	1	1	0	
	Year 7	12	9	5	7	9	10	3	2	0	1	1	0	1	2	0	1	0	0	
Waimate District	Year 8	16	2	20	20	16	10	4	2	1	4	2	1	1	1	1	1	0	1	
	Total	47	27	42	52	74	76	13	8	4	10	5	8	6	5	2	4	2	5	
	Year 1	0	0	0	0	1	0	0	0	0	0	0	0	0	0	0	0	0	0	
	Year 2	1	1	1	0	1	0	0	0	0	0	0	0	0	0	0	0	0	0	
	Year 3	1	2	1	1	0	0	0	0	0	0	0	0	0	0	0	0	0	0	
	Year 4	2	0	2	1	2	0	0	0	0	0	0	0	0	0	0	0	0	0	
	Year 5	0	1	0	1	4	3	0	1	0	0	0	0	0	1	0	0	0	0	
Waipa District	Year 6	3	0	1	1	0	8	0	0	0	0	0	1	0	0	0	0	0	1	
	Year 7	5	2	3	1	2	0	1	1	0	1	0	0	1	1	0	1	0	0	
	Year 8	1	2	1	6	1	5	1	0	0	1	0	0	0	0	0	0	0	0	
	Total	13	8	9	11	11	16	2	2	0	2	0	1	1	2	0	1	0	1	
	Year 1	0	1	3	7	3	7	0	0	1	0	0	1	0	0	0	0	0	0	
	Year 2	0	4	1	2	2	8	0	0	1	0	2	0	0	0	0	0	1	0	
	Year 3	0	1	3	4	7	8	0	0	0	0	1	0	0	0	0	0	1	0	
Wairoa District	Year 4	8	7	2	5	4	19	0	1	0	0	0	1	0	1	0	0	0	1	
	Year 5	10	7	14	1	4	12	1	1	0	0	0	1	0	1	0	0	0	1	
	Year 6	16	4	5	5	10	11	1	0	0	0	0	0	0	0	0	0	0	0	
	Year 7	23	9	6	17	20	37	0	0	1	3	1	7	0	0	0	1	0	4	
	Year 8	28	16	14	23	9	39	3	4	3	4	2	12	3	1	2	3	1	3	
	Total	85	49	48	64	59	141	5	6	6	7	6	22	3	3	2	4	3	9	
	Year 1	0	1	0	0	0	0	0	0	0	0	0	0	0	0	0	0	0	0	
Waitaki District	Year 2	0	0	0	0	0	1	0	0	0	0	0	0	0	0	0	0	0	0	
	Year 3	0	0	0	0	0	0	0	0	0	0	0	1	0	0	0	0	0	0	
	Year 4	0	1	0	0	2	1	0	0	0	0	0	0	0	0	0	0	0	0	
	Year 5	3	1	0	0	1	1	0	0	0	0	0	0	0	0	0	0	0	0	
	Year 6	1	4	1	0	4	2	0	0	0	0	0	0	0	0	0	0	0	0	
	Year 7	1	1	0	2	1	5	1	0	0	0	0	2	0	0	0	0	0	0	
	Year 8	2	0	2	0	2	9	6	0	1	0	3	2	0	0	0	0	0	1	
Waitomo District	Total	7	8	3	2	10	19	7	0	1	0	3	5	0	0	0	0	0	1	
	Year 1	0	2	2	3	3	3	0	0	0	0	0	1	0	0	0	0	0	0	
	Year 2	0	0	1	1	7	10	0	0	0	0	0	2	0	0	0	0	0	1	
	Year 3	2	0	3	0	3	6	0	0	0	0	0	0	0	0	0	0	0	0	
	Year 4	1	4	2	1	1	11	0	0	0	0	0	3	0	0	0	0	0	2	
	Year 5	4	7	3	6	8	4	0	0	0	1	0	2	0	0	0	1	0	1	
	Year 6	2	8	10	5	7	6	0	2	0	1	0	2	0	1	0	1	0	1	
Wanganui District	Year 7	6	8	11	5	7	3	1	1	3	0	1	1	1	0	1	0	0	0	
	Year 8	10	9	15	9	5	9	0	1	1	5	4	3	0	1	0	3	0	1	
	Total	25	38	47	30	41	52	1	4	4	7	5	14	1	2	1	5	0	6	
	Year 1	0	0	0	0	2	0	0	0	0	0	0	0	0	0	0	0	0	0	
	Year 2	0	0	0	0	2	4	0	0	0	0	0	1	0	0	0	0	0	1	
	Year 3	0	0	1	0	1	1	0	0	0	0	0	0	0	0	0	0	0	0	
	Year 4	2	0	0	1	0	0	0	0	0	0	0	0	0	0	0	0	0	0	
Wellington City	Year 5	0	2	0	2	1	2	0	0	0	0	0	0	0	0	0	0	0	0	
	Year 6	1	1	1	0	2	4	1	0	1	0	0	1	0	0	0	0	0	0	
	Year 7	1	5	6	4	7	23	0	0	1	0	0	5	0	0	0	0	0	1	
	Year 8	5	3	4	12	7	12	2	3	1	2	2	1	1	0	0	0	0	1	
	Total	9	11	12	19	22	46	3	3	3	2	2	8	1	0	0	0	0	3	
	Year 1	3	2	3	7	6	15	0	0	0	1	0	1	0	0	0	1	0	1	
	Year 2	3	10	5	9	16	6	1	1	0	0	1	0	1	1	0	0	1	0	
Western Bay of Plenty District	Year 3	7	5	11	15	13	18	0	0	1	0	1	4	0	0	0	0	1	1	
	Year 4	11	6	7	11	19	34	1	1	0	1	0	2	1	1	0	1	0	1	
	Year 5	18	10	24	4	38	38	2	1	0	2	3	4	1	1	0	1	2	3	
	Year 6	21	17	11	34	21	45	1	2	1	2	1	4	1	1	0	2	0	4	
	Year 7	11	13	19	6	15	21	1	1	5	2	6	4	1	1	2	2	3	3	
	Year 8	29	24	20	25	17	32	5	2	0	2	7	5	2	0	0	1	3	4	
	Total	103	87	100	111	145	209	11	8	7	10	19	24	7	5	2	8	10	17	
Westland District	Year 1	0	0	0	0	0	2	0	0	0	0	0	1	0	0	0	0	0	0	
	Year 2	1	1	0	0	1	2	0	0	0	0	0	0	0	0	0	0	0	0	
	Year 3	0	2	0	1	1	3	0	0	0	0	0	1	0	0	0	0	0	1	
	Year 4	1	0	2	0	1	2	0	0	0	0	0	0	0	0	0	0	0	0	
	Year 5	6	5	0	4	2	2	0	0	0	0	0	0	0	0	0	0	0	0	
	Year 6	7	1	2	2	7	1	1	0	0	0	1	0	0	0	0	0	0	0	
	Year 7	22	8	5	5	3	8	2	1	0	0	1	1	2	0	0	0	0	0	
Whakatane District	Year 8	16	19	17	10	8	21	1	4	3	1	2	3	0	1	2	0	0	1	
	Total	53	36	26	22	23	41	4	5	3	1	4	6	2	1	2	0	0	2	
	Year 1	0	1	0	1	4	4	0	0	0	0	0	1	0	0	0	0	0	0	
	Year 2	3	0	0	0	1	2	0	0	1	0	0	0	0	0	0	0	0	0	
	Year 3	2	5	0	0	3	8	0	0	0	0	0	1	0	0	0	0	0	0	
	Year 4	5	2	4	2	1	3	0	2	2	0	1	0	0	1	0	0	0	0	
	Year 5	0	2	1	7	5	3	0	1	0	2	1	2	0	0	0	1	0	1	
Westland District	Year 6																			

Whangarei District	Year 3	4	6	1	6	3	12	0	1	0	0	2	1	0	1	0	0	2	0
	Year 4	9	10	9	11	10	12	0	2	1	0	0	0	0	1	0	0	0	0
	Year 5	10	16	12	12	15	19	1	3	3	1	1	1	0	1	1	1	0	1
	Year 6	9	12	16	14	26	29	2	0	2	1	1	3	0	0	2	1	0	2
	Year 7	28	15	26	28	21	38	6	1	10	7	1	3	2	0	6	3	1	2
	Year 8	44	46	44	28	50	50	11	13	7	8	9	10	2	4	4	2	5	7
	Total	106	107	110	100	127	161	20	20	23	17	14	18	4	7	13	7	8	12

Number of Exclusions for Year 1-8 students by Decile and Year Level (2012-2017)

Note: Students must be aged 16 or over to be expelled, so there are no expulsions for primary students

		Exclusions					
		2012	2013	2014	2015	2016	2017
Decile 1	Year 1	0	0	0	0	0	0
	Year 2	0	2	0	1	1	2
	Year 3	0	0	1	1	4	4
	Year 4	3	4	6	7	3	9
	Year 5	6	4	4	9	4	8
	Year 6	12	7	4	7	6	10
	Year 7	12	5	8	8	17	19
	Year 8	17	12	13	29	30	23
	Total	50	34	36	62	65	75
Decile 2	Year 1	2	0	2	0	0	0
	Year 2	5	2	2	0	3	2
	Year 3	0	4	4	2	5	5
	Year 4	3	6	5	2	4	9
	Year 5	6	10	0	3	6	10
	Year 6	9	7	12	7	15	9
	Year 7	16	16	16	11	8	8
	Year 8	15	17	18	13	15	19
	Total	56	62	59	38	56	62
Decile 3	Year 1	1	0	0	2	1	4
	Year 2	0	1	0	1	2	2
	Year 3	2	1	3	6	1	5
	Year 4	2	3	5	3	1	4
	Year 5	2	2	4	3	5	7
	Year 6	3	4	3	4	3	6
	Year 7	16	4	8	13	5	11
	Year 8	11	12	11	7	19	16
	Total	37	27	34	39	37	55
Decile 4	Year 1	0	0	1	0	0	1
	Year 2	1	0	1	1	1	1
	Year 3	1	1	1	0	0	5
	Year 4	1	1	1	3	6	5
	Year 5	5	1	1	2	1	9
	Year 6	4	2	7	10	3	4
	Year 7	11	11	10	5	8	9
	Year 8	24	18	12	9	19	13
	Total	47	34	34	30	38	47
Decile 5	Year 1	0	0	0	0	0	1
	Year 2	0	0	1	0	1	2
	Year 3	2	0	2	1	2	2
	Year 4	4	1	1	2	3	2
	Year 5	3	3	3	2	1	7
	Year 6	4	8	2	0	3	2
	Year 7	7	4	6	9	8	15
	Year 8	22	13	17	21	14	26
	Total	42	29	32	35	32	57
Decile 6	Year 1	0	0	0	0	0	0
	Year 2	0	0	0	2	2	2
	Year 3	0	0	1	1	1	2
	Year 4	2	0	3	3	0	1
	Year 5	2	5	2	2	5	4
	Year 6	2	5	5	2	1	3
	Year 7	2	5	5	11	8	8
	Year 8	8	9	6	9	6	10

	Total	16	24	22	30	23	30
Decile 7	Year 1	0	0	0	0	0	0
	Year 2	0	0	0	0	1	0
	Year 3	1	2	0	2	0	2
	Year 4	2	3	1	3	6	1
	Year 5	1	3	1	3	4	1
	Year 6	0	1	0	2	1	4
	Year 7	2	6	2	4	6	1
	Year 8	1	3	4	3	6	8
	Total	7	18	8	17	24	17
Decile 8	Year 1	0	0	0	1	0	0
	Year 2	0	2	1	0	1	0
	Year 3	2	0	0	2	0	1
	Year 4	0	1	2	1	1	2
	Year 5	0	0	1	0	5	4
	Year 6	2	0	1	1	2	2
	Year 7	7	2	1	3	2	3
	Year 8	3	6	5	8	5	11
	Total	14	11	11	16	16	23
Decile 9	Year 1	0	0	1	1	0	1
	Year 2	0	0	0	1	1	0
	Year 3	0	0	0	1	0	1
	Year 4	1	2	2	0	1	5
	Year 5	0	1	2	2	1	2
	Year 6	0	1	1	2	1	5
	Year 7	2	1	1	0	2	3
	Year 8	2	3	4	3	1	3
	Total	5	8	11	10	7	20
Decile 10	Year 1	0	0	0	0	2	2
	Year 2	1	0	1	0	4	1
	Year 3	0	1	1	2	0	1
	Year 4	1	1	0	1	0	3
	Year 5	1	2	1	1	0	4
	Year 6	1	1	0	1	1	2
	Year 7	0	0	0	1	0	4
	Year 8	1	2	2	0	2	3
	Total	5	7	5	6	9	20
Not Applicable	Year 2	0	0	0	0	0	0
	Year 4	0	0	0	0	0	0
	Year 6	0	0	0	0	0	0
	Year 7	0	0	0	0	0	0
	Year 8	0	0	0	0	0	1
	Total	0	0	0	0	0	1



STAND-DOWNS, SUSPENSIONS, EXCLUSIONS AND EXPULSIONS FROM SCHOOL

In 2017 age-standardised stand-down, suspension, exclusion, and expulsion rates all increased.

Schools continue to stand-down, suspend, and exclude more Māori students than any other ethnic group. Male students are more than three times as likely to receive a stand-down, suspension or exclusion, and over four times more likely to be expelled than female students.

Indicator Description

This indicator uses age-standardised rates. These are expressed as the number of stand-downs, suspensions, exclusions and expulsions per 1,000 students enrolled. Most stand-downs, suspensions and exclusions occur at ages 13-15, and age-standardisation allows a fair comparison between different cohorts. In any given year the schooling population will have a different age distribution. By standardising for age we can compare across years.

Expulsions occur only for 16 year-olds and above, therefore the expulsion rate refers to the number of expulsions per 1,000 students enrolled, standardised for students aged 16 or over. Likewise, exclusions only occur for students aged 15 and under, therefore the exclusion rate refers to number of exclusions per 1,000 students enrolled, standardised for students aged 15 or under. All mention of schools in this indicator refers to state and state integrated schools only.

Stand-downs, suspensions, exclusions and expulsions are measures of a school's response to particular behaviours. What one school may choose to suspend for, another may not.

Why This Is Important

Student attendance and engagement are critical factors relating to student achievement. The levels of stand-downs, suspensions, exclusions and expulsions help provide indications of where engagement in productive learning may be absent and behavioural issues may be present.

A state or state integrated school principal may consider the formal removal of a student through a stand-down from school for a period of up to 5 school days. A stand-down, for any student, can total no more than 5 school days in a term, or 10 days in a school year. Students return automatically to school following a stand-down.

While **stand-downs** impact on actual opportunity to learn they are also a response to a wide range of concerning behaviours including drug and alcohol abuse and violence that could disrupt the learning of the individuals concerned, and could be disruptive and unsafe for peers and adults in the school community. Stand-downs can offer an opportunity to reduce tension and reflect on the action which led to the stand-down. As such, if used in appropriate circumstances, a stand-down can be a positive mechanism for preventing escalation. However, its use should be part of a proactive approach and should be kept to a minimum due to the disruption to student's learning which is inherent in the mechanism.

A **suspension** is a formal removal of a student from a school until a school Board of Trustees decides the outcome at a suspension meeting. Following a suspension, the Board of Trustees decides how to address the student's misbehaviour. The Board can either lift the suspension (with or without conditions), extend the suspension (with conditions), or terminate the student's enrolment at the school.

Exclusions and **expulsions** are subsets of suspension where an enrolment is terminated. If the student is aged under 16, the Board may decide to **exclude** the student from the school, with the requirement that the student enrolls elsewhere. This decision should be arrived at in only the most serious cases. If the student is aged 16 or over, the board may decide to **expel** them from the school, and the student may or may not enrol at another school. Again, this decision should be arrived at only in the most serious cases. Excluded or expelled students may face difficulties in enrolling in other schools. This may result in students:

- accessing correspondence schooling through Te Aho o te Kura Pounamu,
- entering Alternative Education provision (for excluded students),
- dropping out of the education system,
- entering tertiary study or employment.



In 2017, Boards of Trustees decided to lift 45% of all suspensions. Around 9 out of 10 of these were lifted with conditions placed on the student. The decision to extend the suspension, exclude or expel was made in 17%, 33% and 5% of cases respectively.

Research emphasises the importance of proactive partnerships with parents and a strategy focused on both achievement and behaviour. Approaches that are focused only on disciplinary or pastoral responses have been found to be ineffective for positive outcomes. Positive Behaviour for Learning, launched in 2009, is a major shift in the management of disruptive behaviour in the education system. It provides proactive support for parents, teachers and schools that benefit everyone. The result is better learning environments for all learners and staff, improved teacher ability to support children's behaviour and emotional needs, improved engagement in learning, a lift in achievement for learners and an increase in teacher confidence and satisfaction.

Māori and Pacific students are over-represented in disengagement measures. *Ka Hikitia - Accelerating Success 2013–2017* is the Ministry's strategy to rapidly change how the education system performs so that all Māori students gain the skills, qualifications and knowledge they need to enjoy and achieve education success as Māori.

The Pasifika Education Plan - 2013-2017 (PEP) is aimed at raising Pacific students' participation, engagement and achievement from early learning through to tertiary education. The PEP's vision is to see 'five out of five Pacific students participating, engaging and achieving in education, secure in their identities, languages and cultures and contributing fully to Aotearoa New Zealand's social, cultural and economic wellbeing'.



STAND-DOWNS

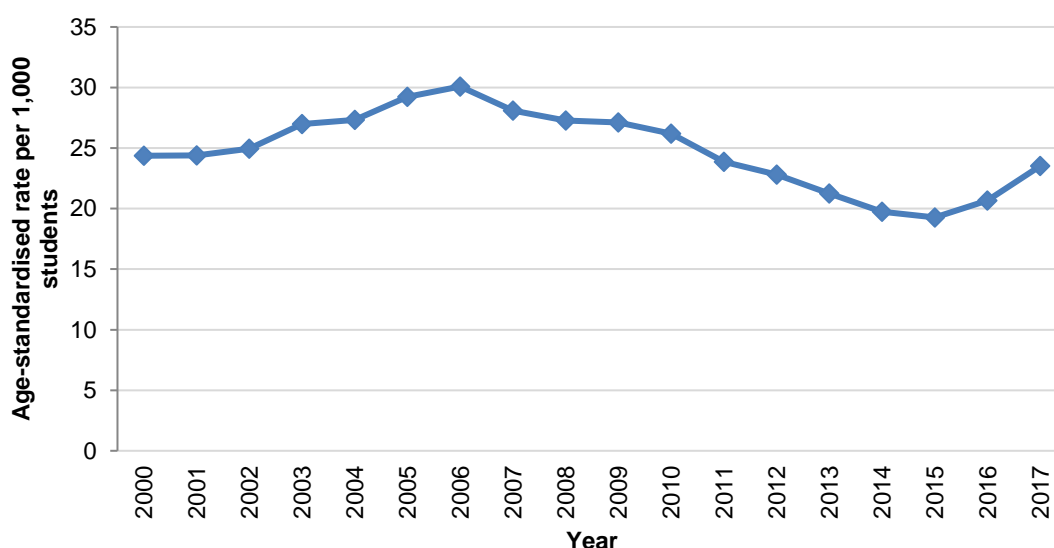
How We Are Going

The age-standardised stand-down rate increased from 24.4 stand-downs per 1,000 in 2000 to 30.1 stand-downs per 1,000 in 2006, but has subsequently decreased to 23.5 stand-downs per 1,000 in 2017. However, this is an increase from the 2016 rate of 20.7 per 1,000 students.

There were 17,724 stand-down cases in 2017, which were received by 13,341 different students. This equates to 1.7% of the student population in state and state integrated schools receiving stand-downs. Of those students stood-down, 77.3% were stood-down only once during 2017.

In 2017, 55.2% of stand-downs took place in secondary schools. Only 7.9% of secondary schools did not use stand-downs compared to 49.7% of primary schools.

Figure 1: Age-standardised stand-down rates (2000 to 2017)



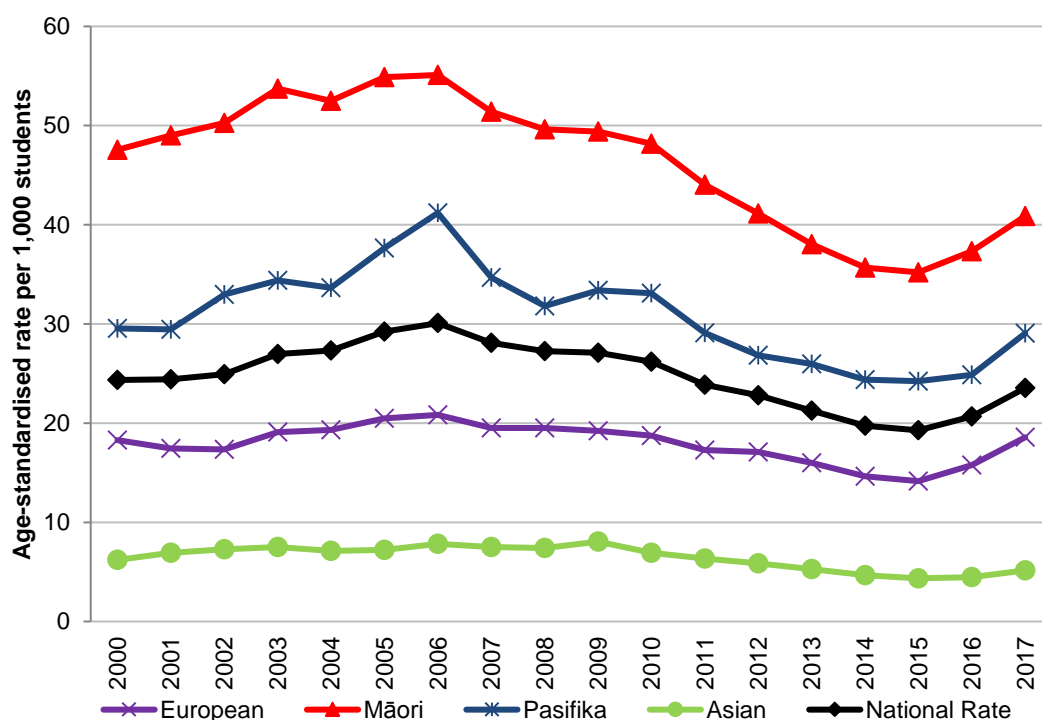
Ethnic Group

Schools are standing-down more Māori students than any other ethnic group.

In 2017, the age-standardised stand-down rate for Māori (40.9 stand-downs per 1,000) was 1.4 times higher than for Pacific students (29.0 stand-downs per 1,000), and 2.2 times as high as European/Pākehā (18.6 stand-downs per 1,000). The stand-down rate for Asian students was the lowest of all ethnic groups (5.2 per 1,000).

European/Pākehā had the biggest increase in stand-down rates between 2016 and 2017, growing by 18%. The rate for Pacific students increased by 17% from 2016 and the Māori rate increased by 10%.

Figure 2: Age-standardised stand-down rates by ethnic group (2000 to 2017)



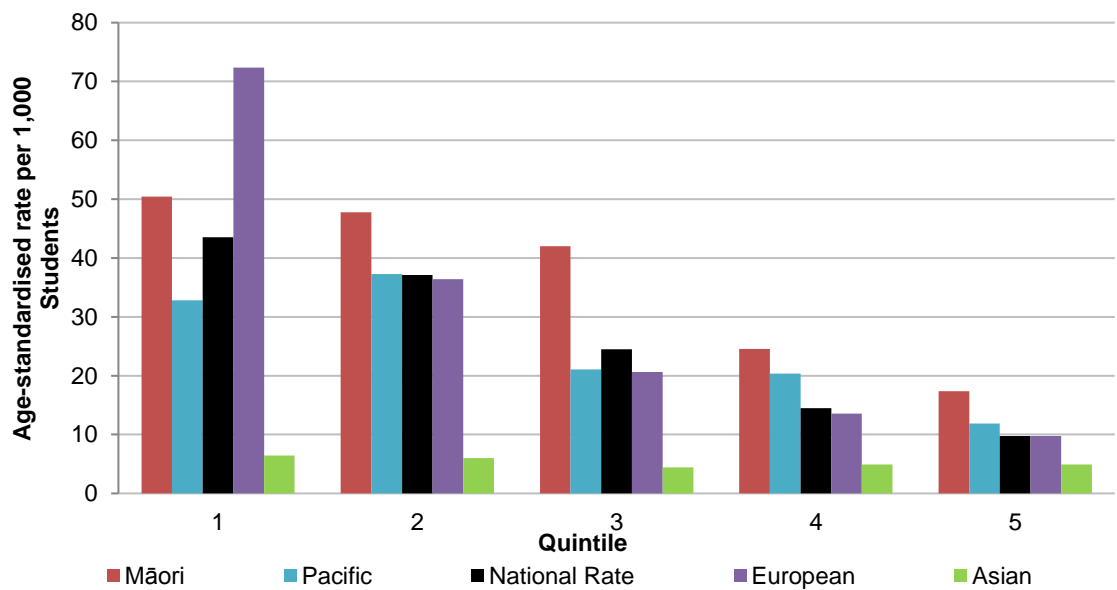
Decile

There is a clear correlation between schools socio-economic mix and age-standardised stand-down rates. Schools in the lowest quintile (deciles 1 and 2) draw their students from communities with the highest degree of socio-economic disadvantage. Students from these schools are over four times more likely to be stood-down than students in the highest quintile (deciles 9 and 10).

Proportionally, more Māori and Pacific students attend schools in the lower quintiles than schools in the higher quintiles.

Age-standardised stand-down rates were highest for Māori, except in quintile 1 where European/Pākehā students had the highest rate. Māori had the second highest rate in this quintile.

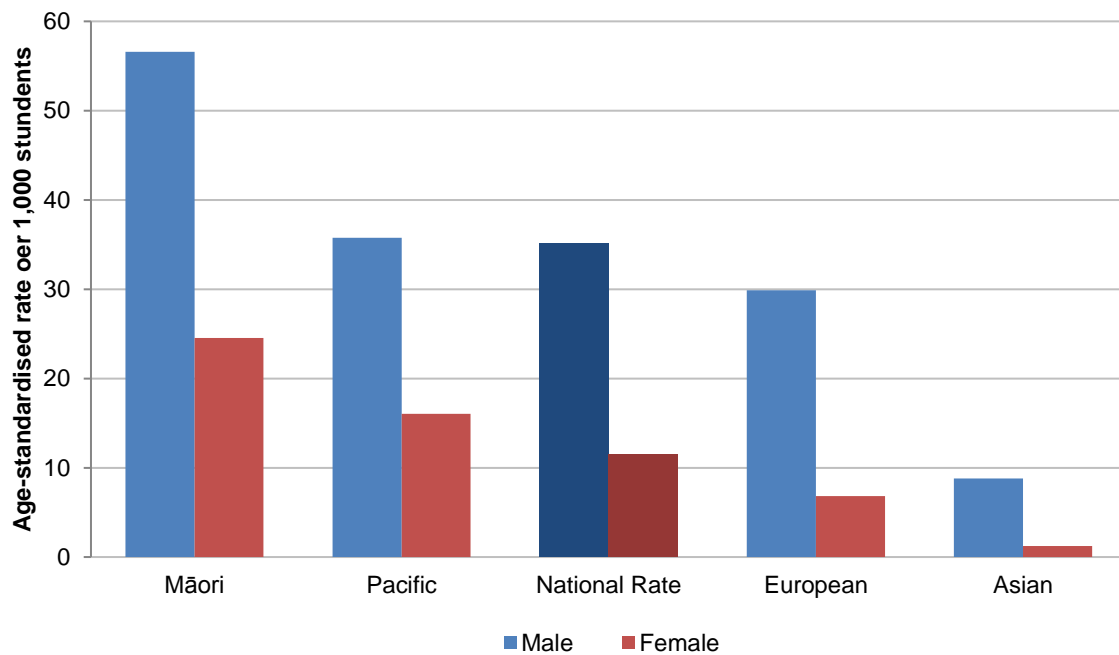
Figure 3: Age-standardised stand-down rates by ethnic group and school quintile (2017)



Gender

Over time, male students have consistently received stand-downs far more frequently than female students. In 2017, the age-standardised stand-down rate for male students (35.1 per 1,000) was more than three times the rate for female students (11.5 per 1,000). A clear gender disparity can be seen across all ethnic groups.

Figure 4: Age-standardised stand-down rates, by gender and ethnic group (2017)



Behavioural Reason

In 2017, physical assault on other students was the main reason for stand-downs, accounting for 30.5% of occurrences with an age-standardised rate of 7.2 per 1,000 students. Continual disobedience was the second most prevalent reason, accounting for 20.5% of stand-downs with an age-standardised rate of 4.8 per 1,000 students. Along with verbal assault on staff (8.8% of stand-downs or 2.1 per 1,000 students), these three behaviours made up almost three-fifths of all stand-downs. Cases of physical assault on other students grew by 1.4 per 1,000 (7.2 per 1,000 students in 2017, up from 5.8 per 1,000 students in 2016).

Figure 5: Age-standardised rates per 1,000 of stand-downs, by behaviour (2000-2017)

	Stand-down Rates									Total
	Continual Dis-obedience	Drugs (Including Substance Abuse)	Physical Assault on Other Students	Physical Assault on Staff	Verbal Assault on Other Students	Verbal Assault on Staff	Smoking or Alcohol	Theft Vandalism or Arson	Other	
2000	6.0	1.2	5.6	0.5	0.6	3.9	2.5	2.0	2.0	24.4
2001	6.2	1.3	5.8	0.5	0.6	3.8	2.4	1.8	2.0	24.4
2002	6.5	1.5	5.6	0.6	0.6	4.0	2.3	1.8	2.2	24.9
2003	6.7	1.3	6.4	0.6	0.7	4.7	2.0	2.1	2.5	27.0
2004	6.9	1.3	6.8	0.6	0.7	4.3	2.0	2.1	2.7	27.3
2005	7.6	1.7	7.2	0.8	0.6	4.5	2.0	2.0	2.8	29.2
2006	7.9	1.3	7.4	0.8	0.6	4.5	2.3	2.3	3.0	30.1
2007	7.2	1.4	7.1	0.8	0.6	4.0	2.2	2.3	2.7	28.1
2008	6.8	1.6	7.0	0.8	0.5	4.1	1.9	2.1	2.5	27.3
2009	6.3	1.9	7.0	0.8	0.6	4.0	1.8	2.2	2.7	27.1
2010	5.7	2.1	6.8	0.8	0.7	3.8	1.7	2.2	2.6	26.2
2011	5.2	1.8	6.1	0.6	0.6	3.6	1.4	1.8	2.7	23.9
2012	5.2	1.6	5.9	0.7	0.6	3.1	1.4	1.8	2.5	22.8
2013	4.8	1.7	5.5	0.7	0.6	2.7	1.1	1.5	2.6	21.2
2014	4.5	1.6	4.9	0.7	0.5	2.5	1.0	1.4	2.6	19.7
2015	4.3	1.5	4.9	0.8	0.5	2.2	0.9	1.4	2.8	19.3
2016	4.4	1.4	5.8	1.1	0.5	2.2	0.9	1.4	3.1	20.7
2017	4.8	1.3	7.2	1.2	0.6	2.1	1.3	1.6	3.3	23.5

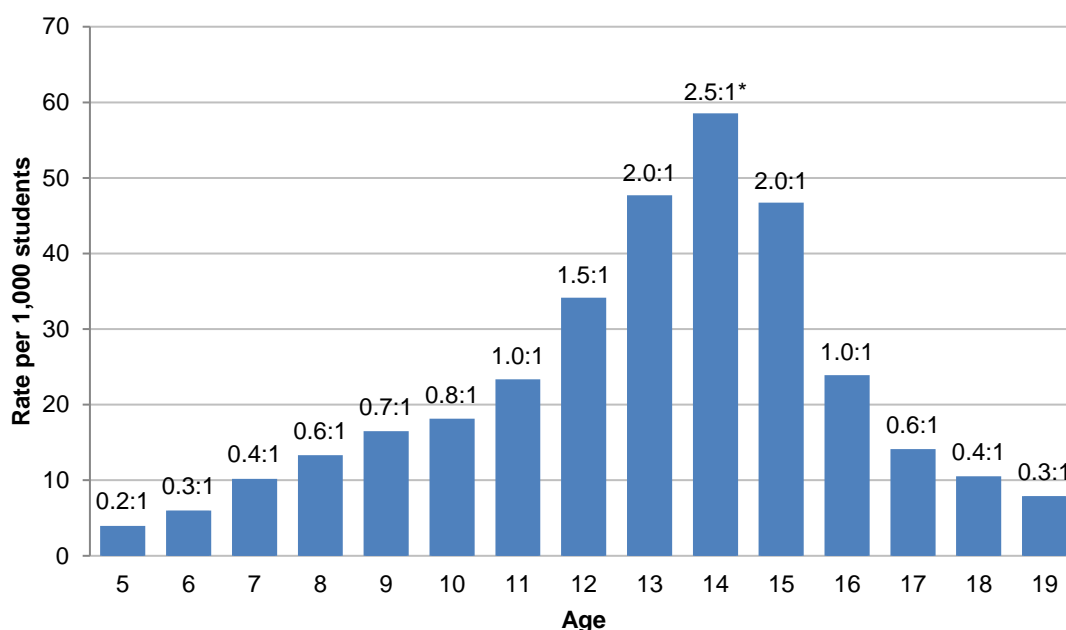
Note: "Other" behaviours includes sexual harassment, sexual misconduct, weapons and other harmful and dangerous behaviours. Schools make the decision on which behavioural category an incident is classified within.



Age

Almost half of all stand-downs occurred for students aged 13 to 15, accounting for 47% of all stand-downs. The rate was the highest for age 14 (58.5 stand-downs per 1,000 students). This substantial variation is why analysis is undertaken using age-standardised rates for the majority of the indicator. Year to year the spread of ages in the school system can shift, and age-standardising makes the data comparable over time.

Figure 6: Stand-down rates, by age (2017)



* Labels on the bars show the odds of a student being stood down, compared to the average. For example, a 14 year old student is 2.5 times as likely to be stood down as an average student across all age groups.



SUSPENSIONS

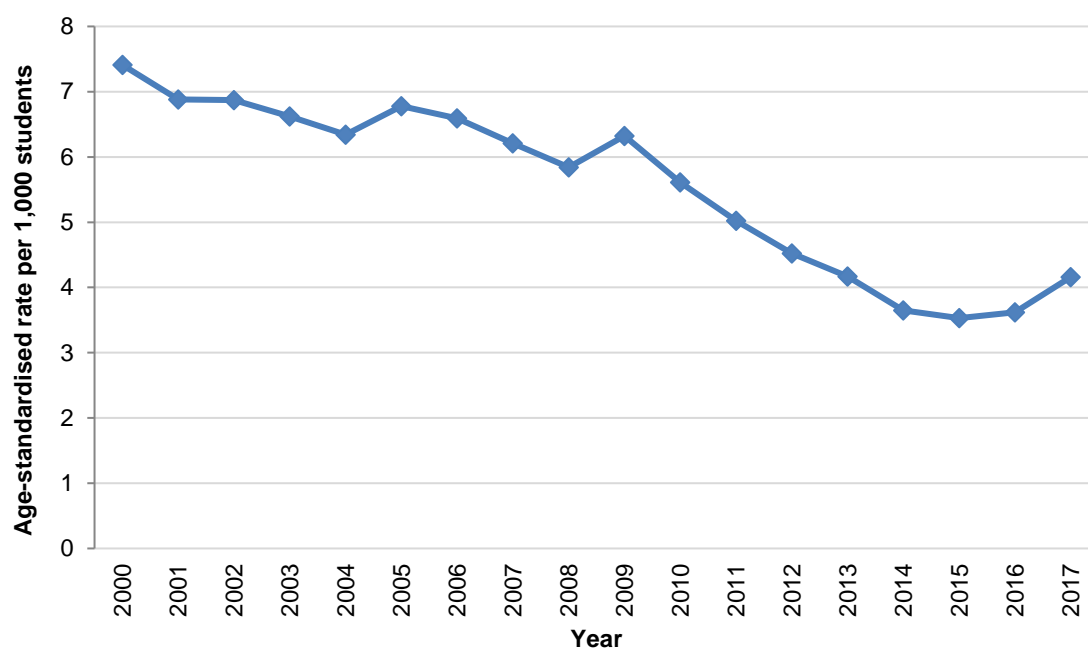
How We Are Going

The incidence of suspensions has decreased by 44% since 2000, from an age-standardised rate of 7.4 suspensions per 1,000 students in 2000, to 4.2 suspensions per 1,000 in 2017. This rate was up from 3.6 per 1,000 students in 2016.

There were 3,134 suspension cases in 2017, which were received by 2,827 different students. This equates to 0.4% of the total student population receiving suspensions. Of those students suspended during 2017, 91% were suspended only once.

In 2017, 21.1% of all secondary schools did not use suspensions as a part of a behaviour management programme, compared to 80.6% of all primary schools.

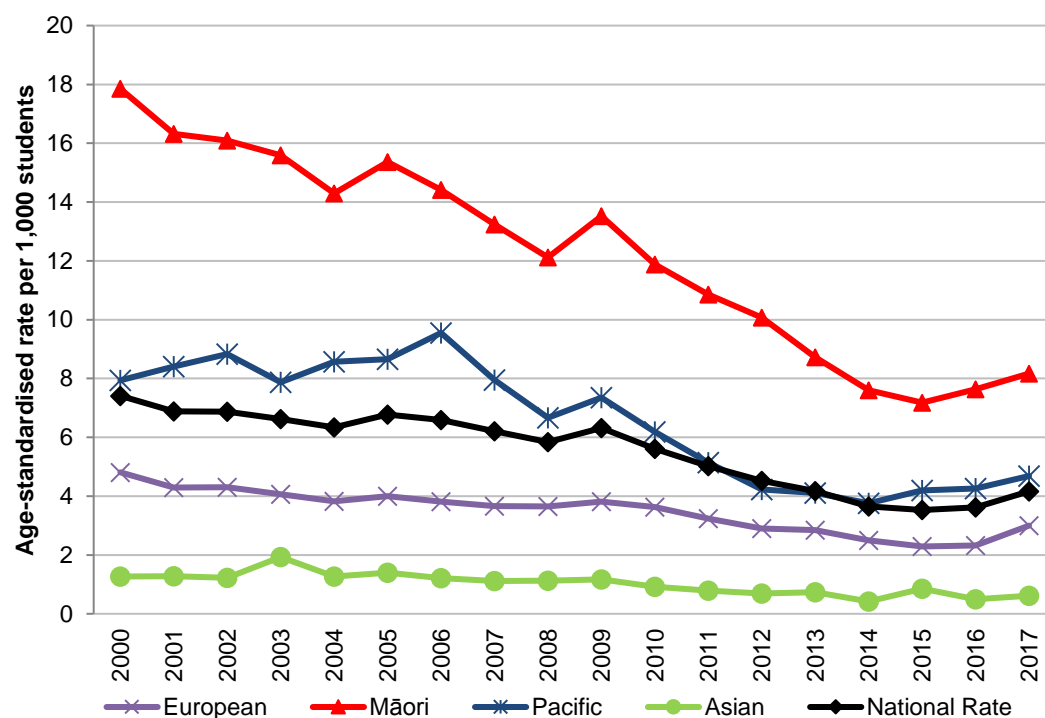
Figure 7: Age-standardised suspension rates (2000 to 2017)



Ethnic Group

Schools are suspending more Māori students than any other ethnic group. In 2017, the age-standardised suspension rate for Māori students (8.2 suspensions per 1,000) was 1.7 times higher than for Pacific students (4.7 suspensions per 1,000) and 2.7 times as high as for European/Pākehā (3.0 suspensions per 1,000). However, the suspension rates for Māori have decreased from 17.8 per 1,000 in 2000. The age-standardised suspension rate for Asian students remains the lowest in New Zealand (0.6 per 1,000).

Figure 8: Age-standardised suspension rates by ethnic group (2000 to 2017)



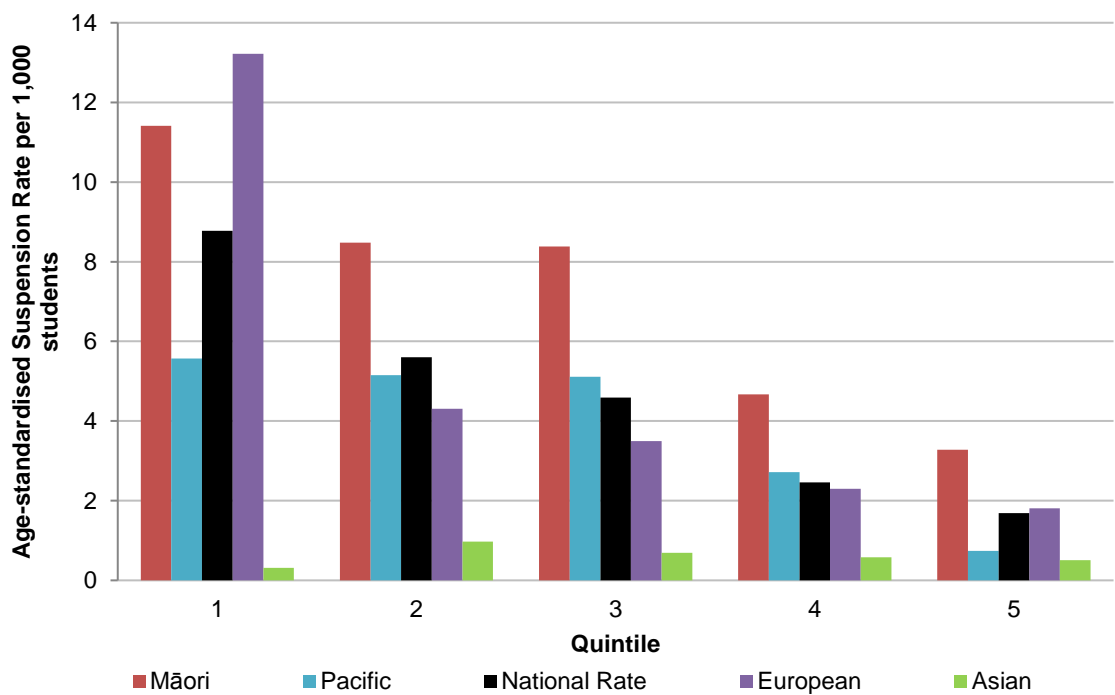
Decile

Students from schools in the lowest quintile (deciles 1 and 2) are 5.2 times more likely to be suspended from school than students in the highest quintile (deciles 9 and 10).

Age-standardised suspension rates are highest for European/Pākehā in Quintile 1, and Māori in all other quintiles. Pacific students have the second highest rates in quintiles 2, 3, and 4, but in quintile 5 the European/Pākehā rate is higher than that of Pacific students.

Proportionally more Māori and Pacific students attend schools in the lower quintiles than schools in the higher quintiles.

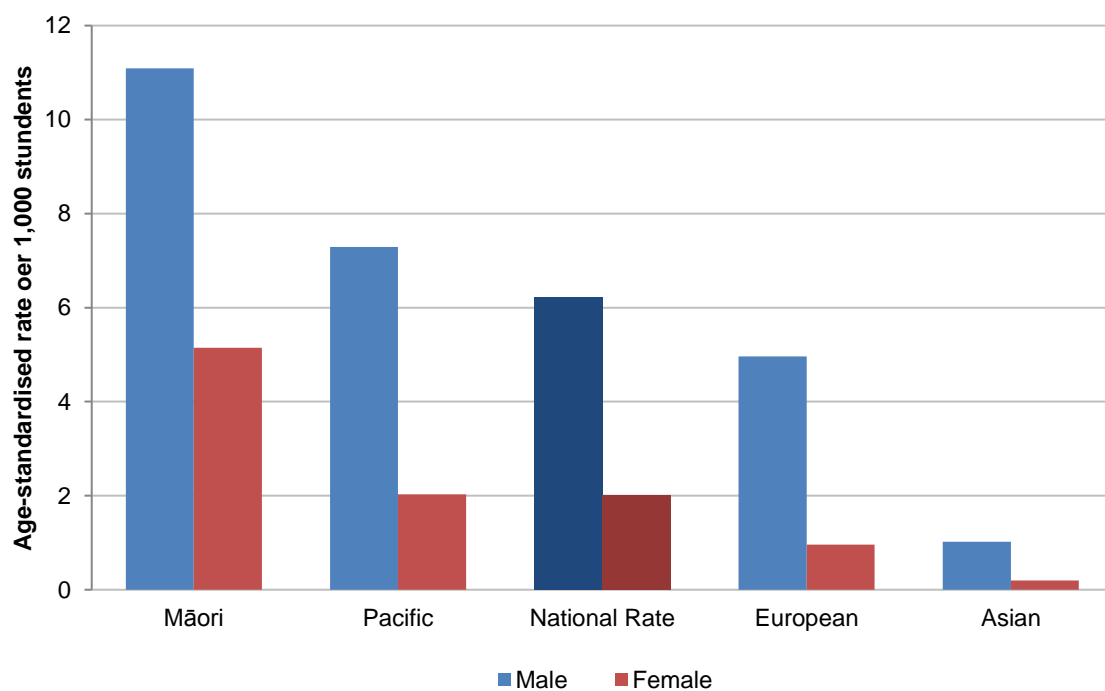
Figure 9: Age-standardised suspension rates by ethnic group and school quintile (2017)



Gender

Male students receive suspensions more frequently than female students. In 2017, the male age-standardised suspension rate (6.2 per 1,000) was 3.1 times that of females (2.0 per 1,000). This is similar to the relationship seen for stand-downs. A clear gender disparity can be seen across all ethnic groups.

Figure 10: Age-standardised suspension rates, by gender and ethnic group (2017)



Behavioural Reasons

In 2017 continual disobedience was the main reason for suspensions (23.6%), with an age-standardised rate of 1.0 per 1000 students. The second most common reason was physical assault on students, with an age-standardised rate of 0.9 per 1000 students (22.1% of total suspension cases). Along with drug and substance abuse (0.8 per 1,000 students or 18.3%), these three behaviours made up almost two-thirds of all suspensions.

Figure 11: Age-standardised rate per 1,000 students of suspensions, by behaviour (2000 to 2017)

	Suspension Rates									Total
	Continual Disobedience	Drugs (Including Substance Abuse)	Physical Assault on Other Students	Physical Assault on Staff	Verbal Assault on Other Students	Verbal Assault on Staff	Smoking or Alcohol	Theft Vandalism or Arson	Other	
2000	1.8	2.3	1.2	0.2	0.1	0.4	0.4	0.6	0.6	7.4
2001	1.6	2.2	1.0	0.2	0.1	0.4	0.4	0.6	0.5	6.9
2002	1.7	2.1	1.1	0.2	0.1	0.4	0.3	0.5	0.6	6.9
2003	1.6	1.8	1.0	0.3	0.1	0.5	0.3	0.6	0.6	6.6
2004	1.6	1.6	1.1	0.2	0.1	0.4	0.3	0.5	0.6	6.3
2005	1.8	1.7	1.3	0.3	0.1	0.4	0.2	0.5	0.6	6.8
2006	1.8	1.3	1.2	0.3	0.1	0.3	0.3	0.6	0.7	6.6
2007	1.7	1.3	1.2	0.3	0.1	0.3	0.3	0.5	0.7	6.2
2008	1.7	1.1	1.2	0.3	0.0	0.3	0.2	0.4	0.6	5.8
2009	1.9	1.4	1.1	0.3	0.1	0.3	0.2	0.5	0.6	6.3
2010	1.3	1.5	1.0	0.2	0.1	0.3	0.2	0.4	0.6	5.6
2011	1.3	1.1	1.0	0.2	0.1	0.3	0.1	0.4	0.6	5.0
2012	1.1	1.1	0.8	0.2	0.1	0.2	0.1	0.4	0.6	4.5
2013	1.1	1.1	0.7	0.2	0.1	0.2	0.1	0.3	0.5	4.2
2014	1.0	0.9	0.6	0.2	0.1	0.2	0.1	0.2	0.5	3.7
2015	0.9	0.7	0.6	0.2	0.1	0.2	0.1	0.3	0.6	3.5
2016	0.9	0.7	0.7	0.2	0.0	0.2	0.1	0.2	0.7	3.6
2017	1.0	0.8	0.9	0.3	0.1	0.2	0.1	0.2	0.7	4.2

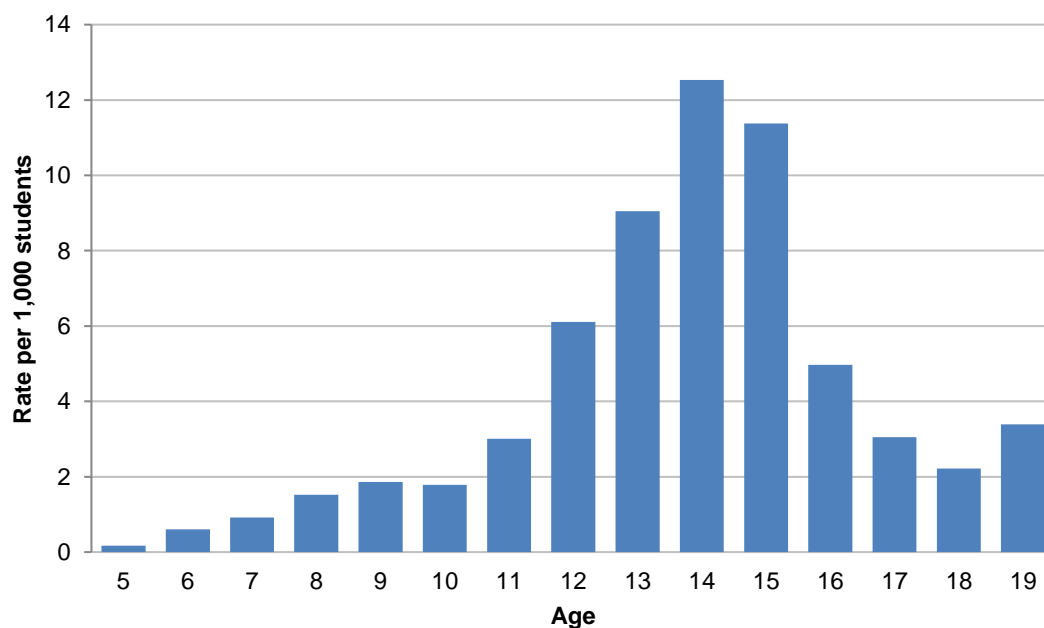
Note: "Other" behaviours includes sexual harassment, sexual misconduct, weapons and other harmful and dangerous behaviours. Schools make the decision on which behavioural category an incident is classified within.



Age

The majority of suspensions occurred for students aged 13 to 15, accounting for 57.1% of all suspensions. The rate was the highest for students aged 14 years (12.5 suspensions per 1,000 in 2017). This substantial variation is why analysis is undertaken using age-standardised data for the majority of this indicator. Year to year the spread of ages in the school system can shift, and age-standardising makes the data comparable over time.

Figure 12: Suspension rates by age (2017)



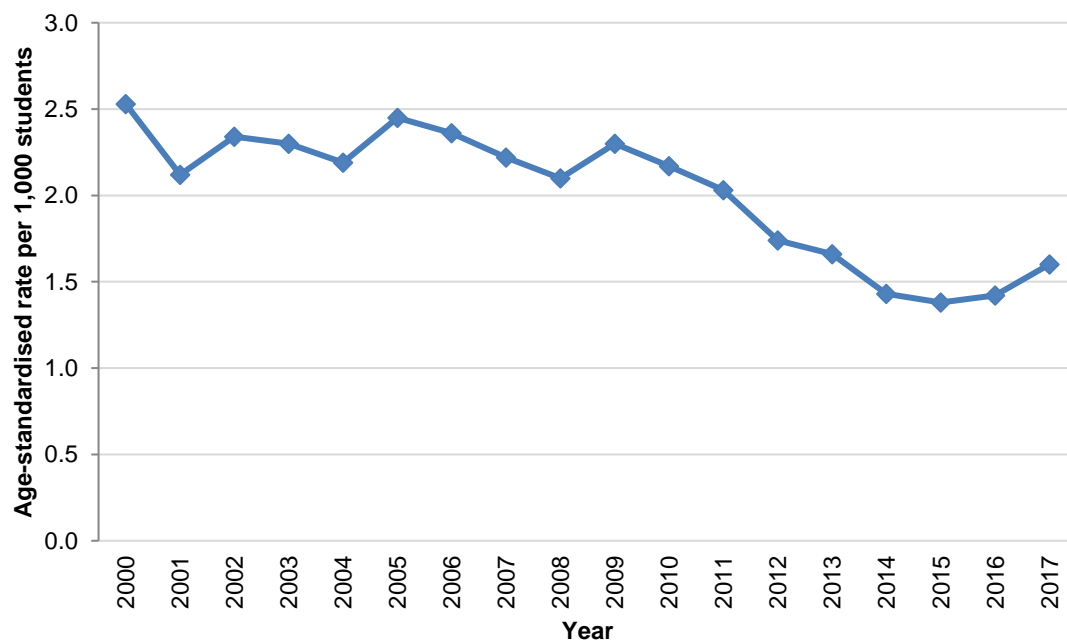
EXCLUSIONS

How We Are Going

Age-standardised exclusion rates have declined over the last 17 years, from 2.5 exclusions per 1,000 students in 2000, to 1.6 exclusions per 1,000 students in 2017. The age-standardised rate of exclusions in 2017 is 37% below the rate in 2000, but higher than the rate in 2016 (1.4 per 1,000 students).

There were 1,044 exclusion cases in 2017, which were received by 1,023 different students. This equates to 0.2% of the total student population under 16 years old receiving exclusions. Of those students excluded during 2017, 97.9% were excluded only once.

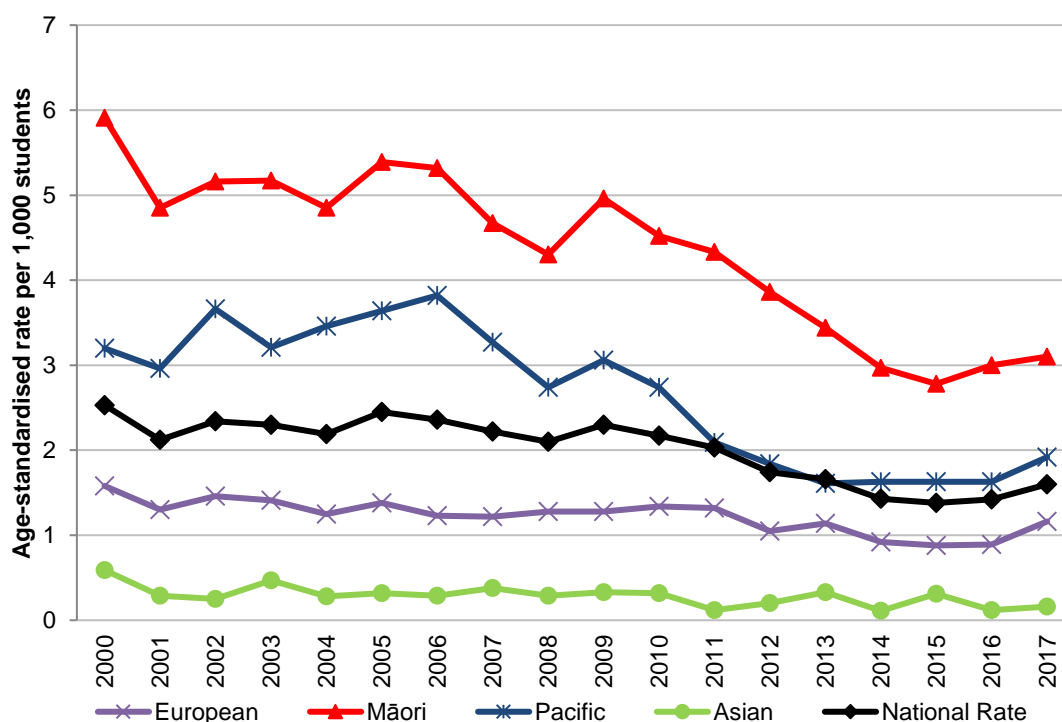
Figure 13: Age-standardised exclusion rates (2000 to 2017)



Ethnic Group

Schools are excluding Māori students more than any other ethnic group. In 2017 the age-standardised exclusion rate for Māori (3.1 exclusions per 1,000) was 1.6 times higher than for Pacific students (1.9 exclusions per 1,000), and 2.7 times as high as for European/Pākehā (1.2 exclusions per 1,000). The age-standardised exclusion rate for Asian students is the lowest of all ethnic groups (0.2 per 1,000).

Figure 14: Age-standardised exclusion rates by ethnic group (2000 to 2017)



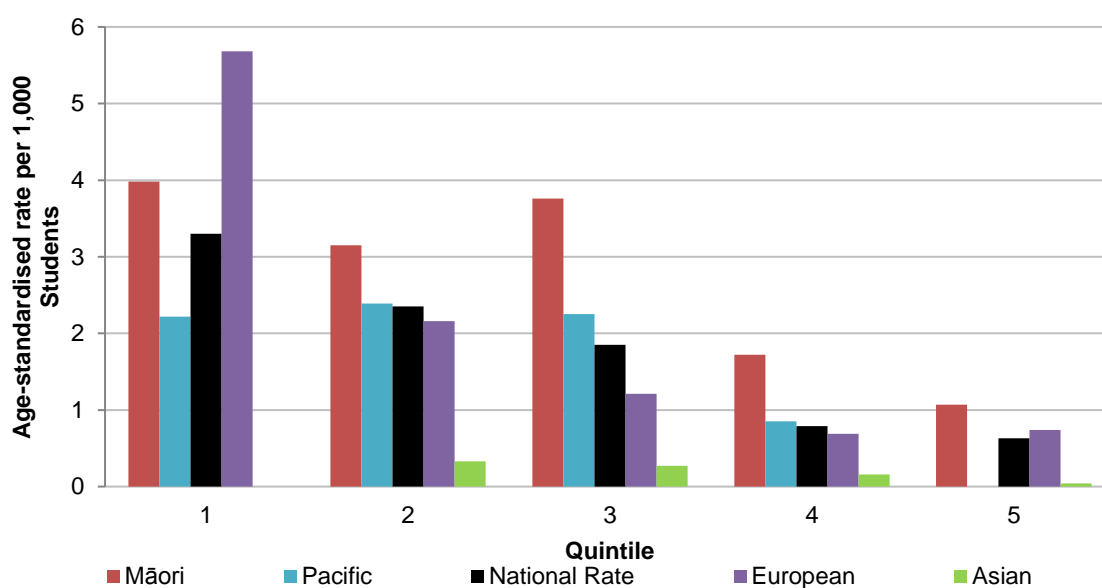
Decile

There is a clear correlation between school socio-economic mix and age-standardised exclusion rates. Students from the lowest quintile schools (deciles 1 and 2) are 5.2 times more likely to be excluded than students in the highest quintile (deciles 9 and 10).

When considering age-standardised exclusion rates by quintile, rates were highest for European/Pākehā in quintile 1, and for Māori in all other quintiles. Pacific students had the second-highest exclusion rates in quintiles 2 to 4, consistent with the pattern seen for suspensions in general.

Proportionally more Māori and Pacific students attend schools in the lower quintiles than schools in the higher quintiles.

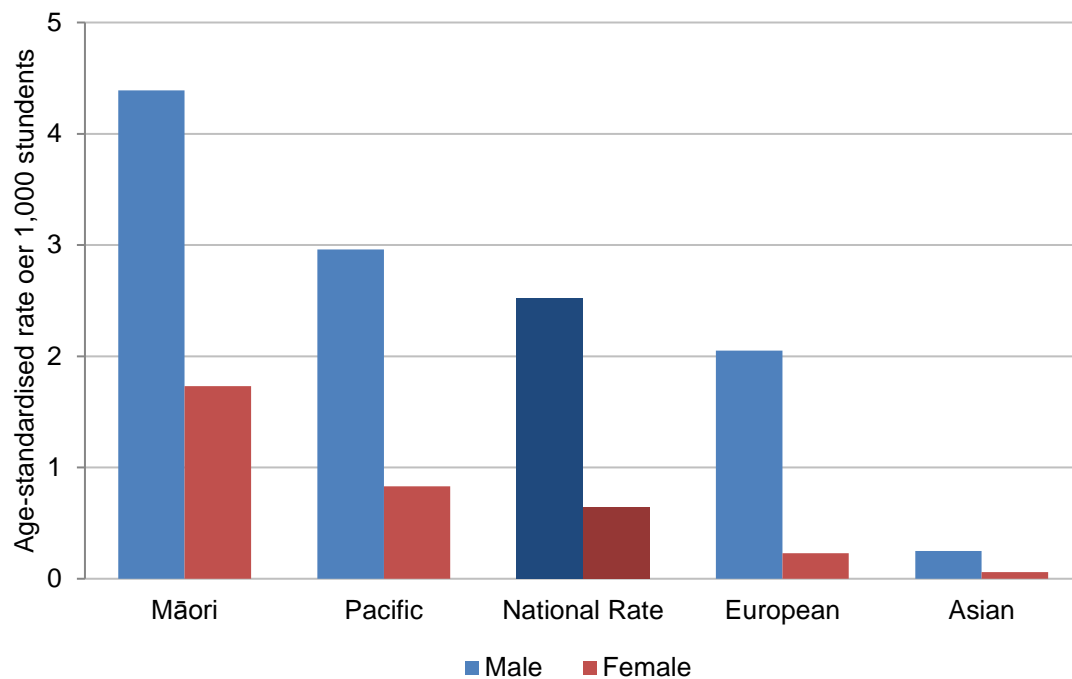
Figure 15: Age-standardised exclusion rates by ethnic group and school quintile (2017)



Gender

Schools exclude more male students than female students. In 2017, the age-standardised exclusion rate was 3.9 times higher for male students (2.5 per 1,000) than for female students (0.6 per 1,000). A clear gender disparity can be seen across all ethnic groups.

Figure 16: Age-standardised exclusion rates, by gender and ethnic group (2017)



Behavioural Reasons

In 2017 continual disobedience was the main reason for exclusions, accounting for 32.5% of all exclusions with an age-standardised rate of 0.5 per 1,000 students. Physical assaults on other students (20.0%) were the second most prevalent reason, with an age-standardised rate of 0.3 per 1,000 students excluded. The third most prevalent reason was drugs (including substance abuse) with an age-standardised rate of 0.2 per 1,000 students (11.2% of total exclusions).

Figure 17: Age-standardised rate per 1,000 students of exclusions, by behaviour (2000 to 2017)

	Exclusion Rates									Total
	Continual Disobedience	Drugs (Including Substance Abuse)	Physical Assault on Other Students	Physical Assault on Staff	Verbal Assault on Other Students	Verbal Assault on Staff	Smoking or Alcohol	Theft Vandalism or Arson	Other	
2000	0.8	0.6	0.4	0.1	0.0	0.1	0.1	0.2	0.2	2.5
2001	0.7	0.5	0.4	0.1	0.0	0.1	0.0	0.2	0.2	2.1
2002	0.8	0.5	0.4	0.1	0.0	0.2	0.0	0.2	0.2	2.3
2003	0.8	0.5	0.3	0.1	0.0	0.1	0.1	0.2	0.2	2.3
2004	0.8	0.4	0.4	0.1	0.0	0.1	0.0	0.2	0.2	2.2
2005	0.9	0.5	0.4	0.1	0.0	0.1	0.0	0.2	0.2	2.5
2006	0.9	0.3	0.4	0.1	0.0	0.1	0.0	0.2	0.2	2.4
2007	0.8	0.3	0.4	0.1	0.0	0.1	0.0	0.2	0.2	2.2
2008	0.8	0.3	0.4	0.1	0.0	0.1	0.0	0.1	0.2	2.1
2009	1.0	0.3	0.4	0.1	0.0	0.1	0.0	0.2	0.2	2.3
2010	0.7	0.5	0.3	0.1	0.0	0.1	0.0	0.2	0.2	2.2
2011	0.7	0.3	0.4	0.1	0.0	0.1	0.0	0.2	0.2	2.0
2012	0.6	0.3	0.3	0.1	0.0	0.1	0.0	0.1	0.2	1.7
2013	0.6	0.3	0.3	0.1	0.0	0.1	0.0	0.1	0.2	1.7
2014	0.5	0.2	0.2	0.1	0.0	0.1	0.0	0.1	0.2	1.4
2015	0.5	0.2	0.2	0.1	0.0	0.1	0.0	0.1	0.2	1.4
2016	0.4	0.2	0.3	0.1	0.0	0.1	0.0	0.1	0.3	1.4
2017	0.5	0.2	0.3	0.1	0.0	0.1	0.0	0.1	0.3	1.6

Note: "Other" behaviours includes sexual harassment, sexual misconduct, weapons and other harmful and dangerous behaviours. Schools make the decision on which behavioural category an incident is classified within.



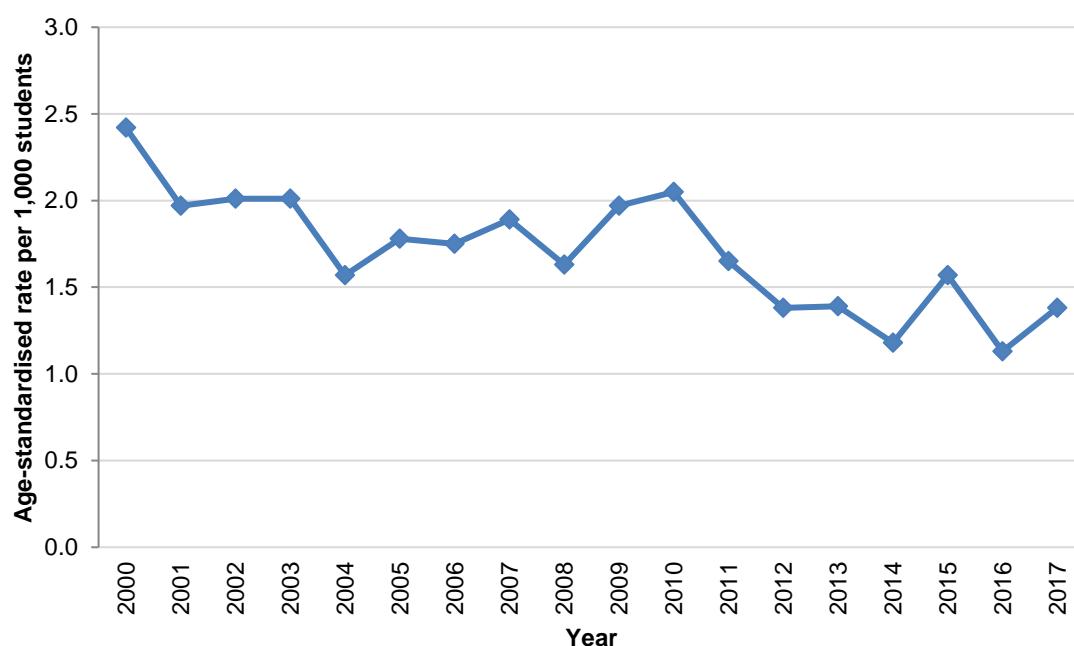
EXPULSIONS

How We Are Going

There were 140 expulsion cases in 2017, received by 140 students. This equates to 0.1% of students aged 16 and over. Expulsions can only be received by learners aged 16 and over.

Once a student turns 16, there is no requirement that they stay in the schooling system. Age-standardisation for expulsions only standardises against those in the population who can be expelled i.e. students aged 16 and over. The overall age-standardised rate of expulsions was 1.4 per 1,000 in 2017, up from 1.1 per 1,000 in 2016.

Figure 18: Age-standardised expulsion rates (2000 to 2017)

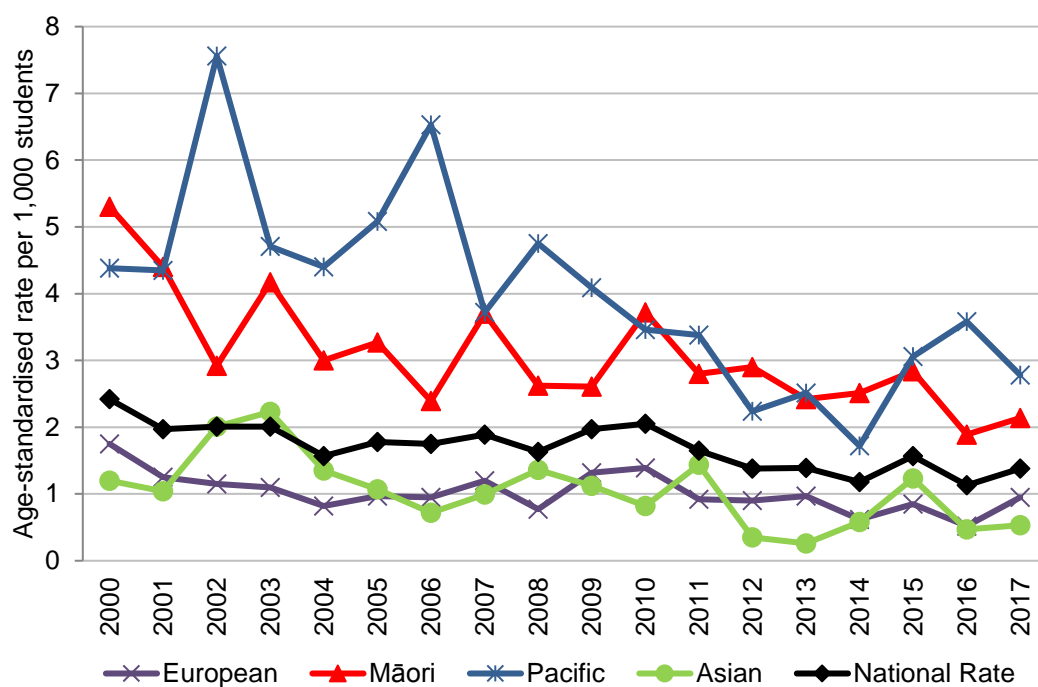


Ethnic Group

Because of the small numbers that are expelled in some of the ethnic groups, small variations in the number of cases from year to year can cause large changes in the age-standardised rates.

Pacific students remained the group with the highest expulsion rate in 2017 (2.8 expulsions per 1,000), followed by Māori (2.1 expulsions per 1,000). The European/Pākehā rate was 1.0 expulsions per 1,000, while Asian students had the lowest rate at 0.5 per 1,000.

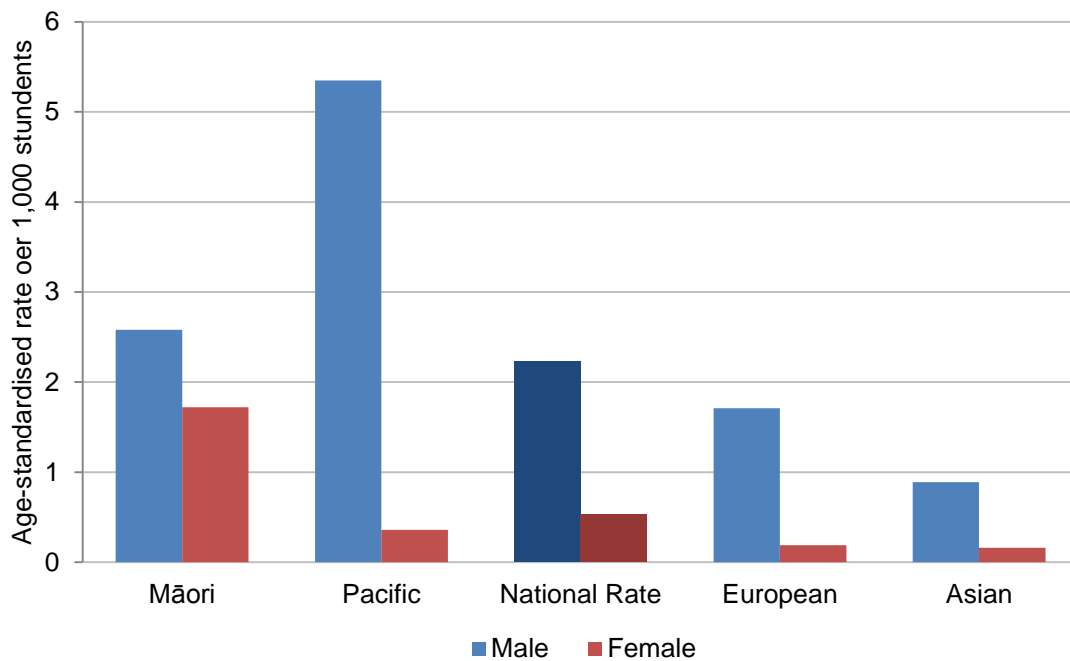
Figure 19: Age-standardised expulsion rates by ethnic group (2000 to 2017)



Gender

Schools expel more male students than female students. In 2017, the age-standardised expulsion rate was 4.2 times higher for male students (2.2 per 1,000) than female students (0.5 per 1,000). A clear gender disparity can be seen across all ethnic groups.

Figure 20: Age-standardised expulsion rates, by gender and ethnic group (2017)



Decile

There is a clear correlation between school socio-economic mix and age-standardised expulsion rates. Schools in the lowest quintile (deciles 1 and 2) draw their students from communities with the highest degree of socio-economic disadvantage. Students from quintile 1 (deciles 1 and 2) schools were 3.2 times more likely to be expelled from school than students in the highest quintile schools (deciles 9 and 10).

Age-standardised expulsion rates can be subject to great fluctuation when broken down by quintile and ethnic group because the raw numbers involved are small. Because of this reason, the quintile by ethnic group analysis carried out in the stand-downs, suspensions and exclusions sections has been excluded from this section.



Behavioural Reasons

Continual disobedience was the main reason for expulsions in 2017, accounting for 25.4% of expulsions. The second most prevalent reason for expulsion was physical assault on other students (21.7%). The third most common reason was drugs, including substance abuse (20.3%). These reasons had age-standardised rates of 0.4, 0.3 and 0.3 expulsions per 1,000 students, respectively.

Figure 21: Age-standardised rate per 1,000 students of expulsions, by behaviour (2000 to 2017)

	Expulsion Rates									Total
	Continual Disobedience	Drugs (Including Substance Abuse)	Physical Assault on Other Students	Physical Assault on Staff	Verbal Assault on Other Students	Verbal Assault on Staff	Smoking or Alcohol	Theft Vandalism or Arson	Other	
2000	0.6	0.8	0.2	0.1	0.0	0.2	0.1	0.3	0.2	2.4
2001	0.5	0.5	0.3	0.1	0.0	0.1	0.1	0.2	0.2	2.0
2002	0.5	0.6	0.4	0.0	0.0	0.1	0.1	0.2	0.2	2.0
2003	0.5	0.5	0.3	0.1	0.1	0.1	0.1	0.2	0.2	2.0
2004	0.4	0.4	0.4	0.0	0.0	0.1	0.1	0.1	0.2	1.6
2005	0.5	0.4	0.4	0.1	0.0	0.0	0.1	0.2	0.1	1.8
2006	0.4	0.2	0.3	0.1	0.0	0.0	0.1	0.2	0.3	1.8
2007	0.4	0.3	0.4	0.1	0.0	0.1	0.1	0.2	0.2	1.9
2008	0.4	0.3	0.4	0.1	0.0	0.1	0.0	0.2	0.1	1.6
2009	0.5	0.5	0.3	0.0	0.0	0.1	0.1	0.2	0.2	2.0
2010	0.5	0.7	0.3	0.1	0.0	0.1	0.0	0.2	0.3	2.1
2011	0.4	0.4	0.4	0.0	0.0	0.0	0.0	0.2	0.2	1.7
2012	0.4	0.4	0.2	0.1	0.0	0.0	0.0	0.1	0.2	1.4
2013	0.3	0.5	0.3	0.0	0.0	0.1	0.0	0.0	0.2	1.4
2014	0.2	0.3	0.2	0.1	0.0	0.1	0.0	0.1	0.2	1.2
2015	0.3	0.5	0.2	0.1	0.0	0.0	0.1	0.1	0.4	1.6
2016	0.2	0.2	0.3	0.1	0.0	0.1	0.0	0.1	0.3	1.1
2017	0.4	0.3	0.3	0.0	0.0	0.1	0.1	0.1	0.2	1.4

Note: "Other" behaviours includes sexual harassment, sexual misconduct, weapons and other harmful and dangerous behaviours. Schools make the decision on which behavioural category an incident is classified within.



Where to Find Out More

To obtain information about other forms of student disengagement consider these indicators:

- [Truancy from school.](#)
- [Non-enrolled students.](#)
- [Early leaving exemptions.](#)
- [Retention of students in senior secondary schools.](#)
- [Transient students.](#)

The Ministry of Education has established an [Iterative Best Evidence Synthesis Programme](#) to systematically identify, evaluate, analyse, synthesise and make accessible, relevant evidence linked to a range of learner outcomes. Evidence about what works for this indicator can be found on the *Education Counts* website. The following Best Evidence Syntheses are relevant to this indicator:

- [Quality Teaching for Diverse Students in Schooling](#): Best Evidence Synthesis
- [The Complexity of Community and Family Influences on Children's Achievement in New Zealand](#): Best Evidence Synthesis.
- [Teacher Professional Learning and Development](#): Best Evidence Synthesis.

Positive Behaviour for Learning (PB4L) helps schools, teachers and parents across New Zealand promote positive behaviour. For information on [Positive Behaviour for Learning](#) visit the TKI website.

References

- Bishop, R and Berryman M (2007). *Culture speaks: cultural relationships and classroom learning*. Huia Publishers.
- Christenson, S., Reschly, A. L., & Wylie, C. (2012). *Handbook of research on student engagement*. New York, NY: Springer.
- Hattie, J. (2003). *Teachers Make a Difference: What is the research evidence?* Melbourne: Australian Council for Educational Research Annual Conference on Building Teacher Quality.
- Klem, A. M. & Connell, J. P. (2004). *Relationships matter: Linking teacher support to student engagement and achievement*. *Journal of School Health*, 74, (7), 262-273.



- Ministry of Education (2009). *Guidelines for principals and boards of trustees on stand-downs, suspensions, exclusions and expulsions. Part 1: Legal options and duties*. Wellington: Ministry of Education.
- Ministry of Education (2009). *Good practice guidelines for principals and boards of trustees for managing behaviour that may or may not lead to stand-downs, suspensions, exclusions and expulsions. Part 2*: Wellington: Ministry of Education.
- Ministry of Education (2013). *Ka Hikitia – Accelerating Success: 2013-2017*. Wellington: Ministry of Education
- Ministry of Education (2013). *The Pasifika Education Plan – 2013 – 2017 (PEP)*. Wellington: Ministry of Education
- Ministry of Education (2010). *Success for All – Every School, Every Child*. Wellington: Ministry of Education

