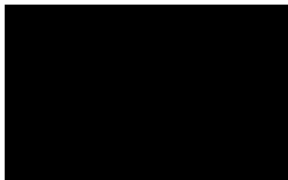




13 AUG 2018



Thank you for your email of 17 July 2018 to the Ministry of Education requesting the following information:

*"The Ministry of Education 'Demand Analysis for Mahurangi College'. Please provide the 2017 version of this document. If there is no 2017 version please provide the most recent version."*

Your request has been considered under the Official Information Act 1982 (the Act).

I am providing you with a copy of *Demand Analysis for Mahurangi College* (27), November 2017. I have withheld *Figure 1: Student Distribution and Surrounding Network of Schools for Mahurangi College, March 2017* under section 9(2)(a) of the Act, to protect the privacy of natural persons.

Please note, the Ministry now proactively publishes OIA responses on our website. As such, we may publish this response on our website after five working days. Your name and contact details will be removed.

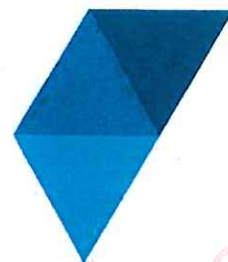
Thank you again for your email. You have the right to ask an Ombudsman to review this decision. You can do this by writing to [info@ombudsman.parliament.nz](mailto:info@ombudsman.parliament.nz) or Office of the Ombudsman, PO Box 10152, Wellington 6143.

Yours sincerely



Katrina Casey  
**Deputy Secretary**  
**Sector Enablement and Support**

cc Isabel Evans, Director of Education for Auckland



# **Demand Analysis for Mahurangi College (27)**

November 2017

Released under the Official Information Act 1982

# Contents

<b>Contents .....</b>	<b>2</b>
<b>Purpose .....</b>	<b>3</b>
<b>School Context.....</b>	<b>4</b>
Student Distribution .....	4
Share of Students .....	5
Ethnicity .....	5
School Status .....	5
Education Infrastructure and Services (EIS) Commentary .....	6
Historical Rolls .....	6
Zoning Status .....	6
<b>Population Projections .....</b>	<b>7</b>
<b>Local Authority Planning Considerations .....</b>	<b>8</b>
Private Developments .....	9
Future Urban Land Supply Strategy .....	9
<b>Future Roll Assessment.....</b>	<b>10</b>
School's Forecasts .....	10
Short Range Roll Forecast.....	11
<i>Scenario One: In Zone Roll Forecast .....</i>	<i>11</i>
<i>Scenario Two: In Zone Roll Forecast Including In Zone Development.....</i>	<i>12</i>
<i>Property Implication .....</i>	<i>12</i>
Long Range Roll Projection .....	13
Future Roll Assessment - Summary.....	13
<b>Network Considerations.....</b>	<b>15</b>
Community of Learning.....	15
<b>Options .....</b>	<b>16</b>
Enrolment Scheme .....	16
Change of Structure.....	16
Short term Demand .....	16
Master Planning.....	16
<b>Conclusion .....</b>	<b>17</b>
<b>Recommendation.....</b>	<b>18</b>

## Purpose

The purpose of this report is to present demographic analysis relating to Mahurangi College that:

- assesses growth (or decline) trends that may impact on the school or the wider schooling network,
- considers options for how the Ministry can respond to the change, and
- proposes recommendations for action.

Previous demand analysis was completed in June 2013 due to the school experiencing significant roll growth over the previous four years and continued roll growth when an enrolment scheme had been implemented in May 2012. It was recommended that Mahurangi College be provided funding for one additional teaching space.

The report considers factors, including the school's historical roll trend and underlying population growth, to identify the reason(s) for roll growth. It will assess the need for changes to enrolment schemes or for additional property provision in the school. The report also takes into account known changes to Auckland Council planning regulations, consented private sector developments, Special Housing Areas and other development pressures.

If continuous roll growth is projected for a school, this report will also assess options for future roll management. Where appropriate, this includes:

- enrolment scheme implications
- changes to schooling structure and
- provision of additional teaching spaces



# School Context

Mahurangi College caters for Year 7-13 students and is located in Warkworth, Auckland. The school is on a reasonably large site of approximately 11.34Ha.

## Student Distribution

Figure 1 shows Mahurangi College's student distribution, as at March 2017, and its surrounding network of schools.

For the purposes of this report, the network of schools includes Rodney College.

**Figure 1: Student Distribution and Surrounding Network of Schools for Mahurangi College, March 2017**



Around 10% of students, or 130 students, attending Mahurangi College reside outside of the school's enrolment scheme home zone. Most students living out of zone reside within the home zone of Rodney College.

## Share of Students

Table 1 shows schools attended by students residing in Mahurangi College's home zone as at March 2017.

**Table 1: Share of In Zone Students, March 2017**

School Name	Student Count	Share of Students
Mahurangi College	1,230	73%
Orewa College	64	4%
Albany Senior High School	54	3%
Westmount School	41	2%
Kaipara College	29	2%
Kristin School	26	2%
Kingsway School	25	1%
Rodney College	25	1%
Te aho o Te Kura Pounamu	22	1%
Pinehurst School	15	1%
Carmel College	15	1%
Westlake Girls' High School	11	1%
Rosmini College	10	1%
Other (36 Schools)	114	8%
<b>Total</b>	<b>1,681</b>	<b>100%</b>

Mahurangi College enrolls 73% of in zone Year 7-13 students. Mahurangi College shares part of its home zone with Rodney College, which enrolls 1%. Mahurangi College also has a small overlap with Orewa College which enrolls 4%.

## Ethnicity

Table 2 shows the ethnicity of students enrolled at Mahurangi College as of March 2017.

**Table 2: Ethnicity of Students at Mahurangi College, March 2017**

Ethnic Group	Student Count	% of Roll
New Zealand European / Pākehā	1038	77%
Māori	166	12%
Pasifika	74	6%
Asian	31	2%
Other	36	3%
<b>Total</b>	<b>1,345</b>	<b>100%</b>

The majority of students that attend Mahurangi College identify as New Zealand European followed by students who identify as Maori. Fewer students identify as Asian, Pasifika or Other ethnicities.

## School Status

Table 3 shows school utilisation data for Mahurangi College as at March 2017.

**Table 3: School Utilisation Status**

Summary	School's status
Current TSs Count*	65
Current Capacity (approx)	1,230
Peak 2017 Roll	1,345
Surplus/ Deficit	-115
% Utilisation	109%

\*Teaching space confirmed as at 13/11/2017

Mahurangi College currently has 65 teaching spaces, creating an approximate capacity for 1,230 student spaces.

Mahurangi College was at 109% of its current capacity with a March 2017 roll of 1,345 students, creating deficit of 115 student spaces.

## Education Infrastructure and Services (EIS) Commentary

The College is site constrained and is limited with area between buildings. A master plan of the site would be recommended. The College is in the current 10 Year Planning Period and will undertake several major roofing projects and upgrades.

The BOT is funding the upgrade of the gym to an ILE (\$800k) which will include an upper floor area that will be used for a circuit room and possibly additional space if needed for a classroom. There are several BIP projects on the go at the moment.

Overall, there are no major issues and no plans for rationalisation.

## Historical Rolls

Table 4 shows the historical March, July and October roll of Mahurangi College between 2011 and 2017.

**Table 4: Historical March, July and October Roll 2011-2017**

Historical Roll	2011	2012	2013	2014	2015	2016	2017
March	1,251	1,267	1,292	1,311	1,283	1,312	1,345
July	1,224	1,249	1,277	1,293	1,273	1,296	1,330
October	1,175	1,228	1,255	1,262	1,241	1,275	1,313
Growth between March and October	-76	-39	-37	-49	-42	-37	-32

Mahurangi College's roll increased between 2011 and 2014. A slight decrease was experienced in 2015 before increasing again in 2016 and 2017.

## Zoning Status

Table 5 shows the zoning status of students attending Mahurangi College as at March 2017.

**Table 5: Zoning status of Mahurangi College's funding roll by year level, 1st March 2017**

March	Year 7	Year 8	Year 9	Year 10	Year 11	Year 12	Year 13+	Total
In zone	196	217	209	196	156	191	109	1,274
Out of zone	11	15	11	9	9	8	8	71
Total	207	232	220	205	165	199	117	1,345

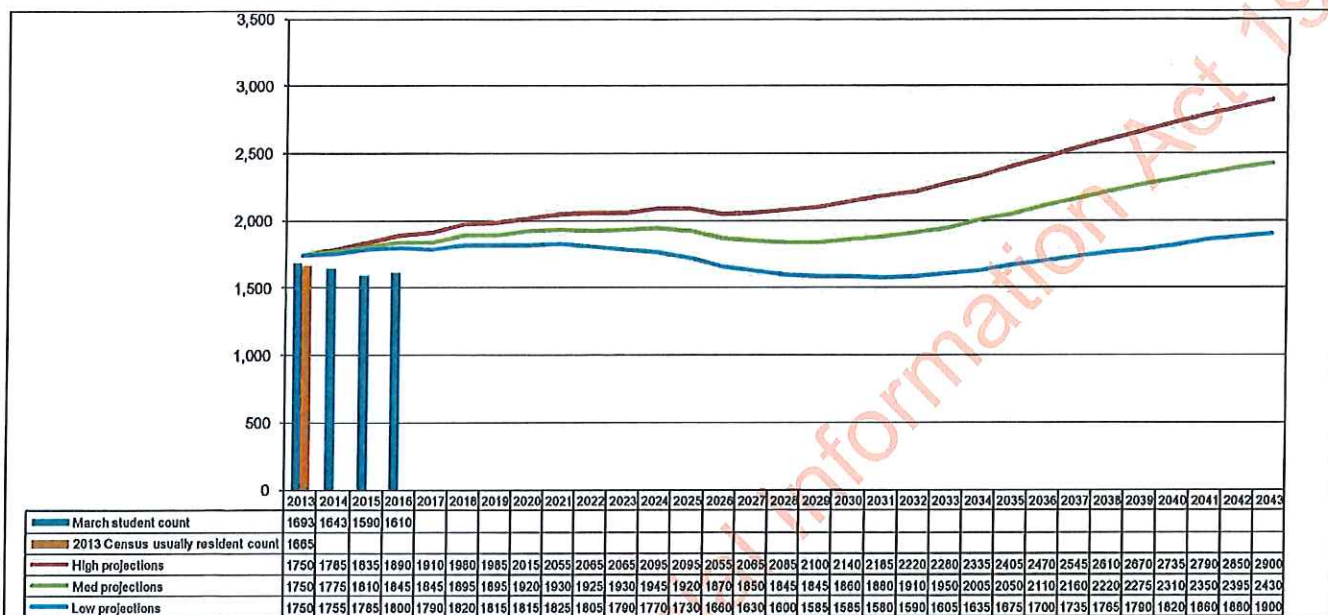
Mahurangi College has operated an enrolment scheme home zone since May 2012 however had not provided zoning information until recently. As at March 2017, Mahurangi College's out of zone roll made up around 6% of its total roll.



# Population Projections

Figure 2 shows Statistics New Zealand (Stats NZ) projections (2013 base) for the Y7-13 (age 11-17) population residing in Mahurangi College's catchment, together with the total number of Y7-13 students geolocated in the catchment from recent roll returns. For the purposes of this analysis, the school's catchment has been defined by the Census Area Units (CAUs) of Leigh, Warkworth, Tauhoa-Puhoi, Matheson Bay, Kawau, Snells Beach, Algies Bay, Mahurangi, Point Wells, Omaha, Matakana, Cape Rodney South.

Figure 2: Projected population age 11-17 and reported student count in Mahurangi College's catchment, 2013-2043



Student counts in Mahurangi College's catchment have fluctuated over the past four years and are below all three projection scenarios.

Using the medium projection scenario, the underlying age 11-17 population is projected to gradually increase until 2024 and, following a period of decline, continues increasing from 2029 reaching a population of 2,430 11-17 year olds by 2043.

Overall, the medium projection anticipates an increase of 585 additional secondary age students for Mahurangi College's catchment between 2016 and 2043.

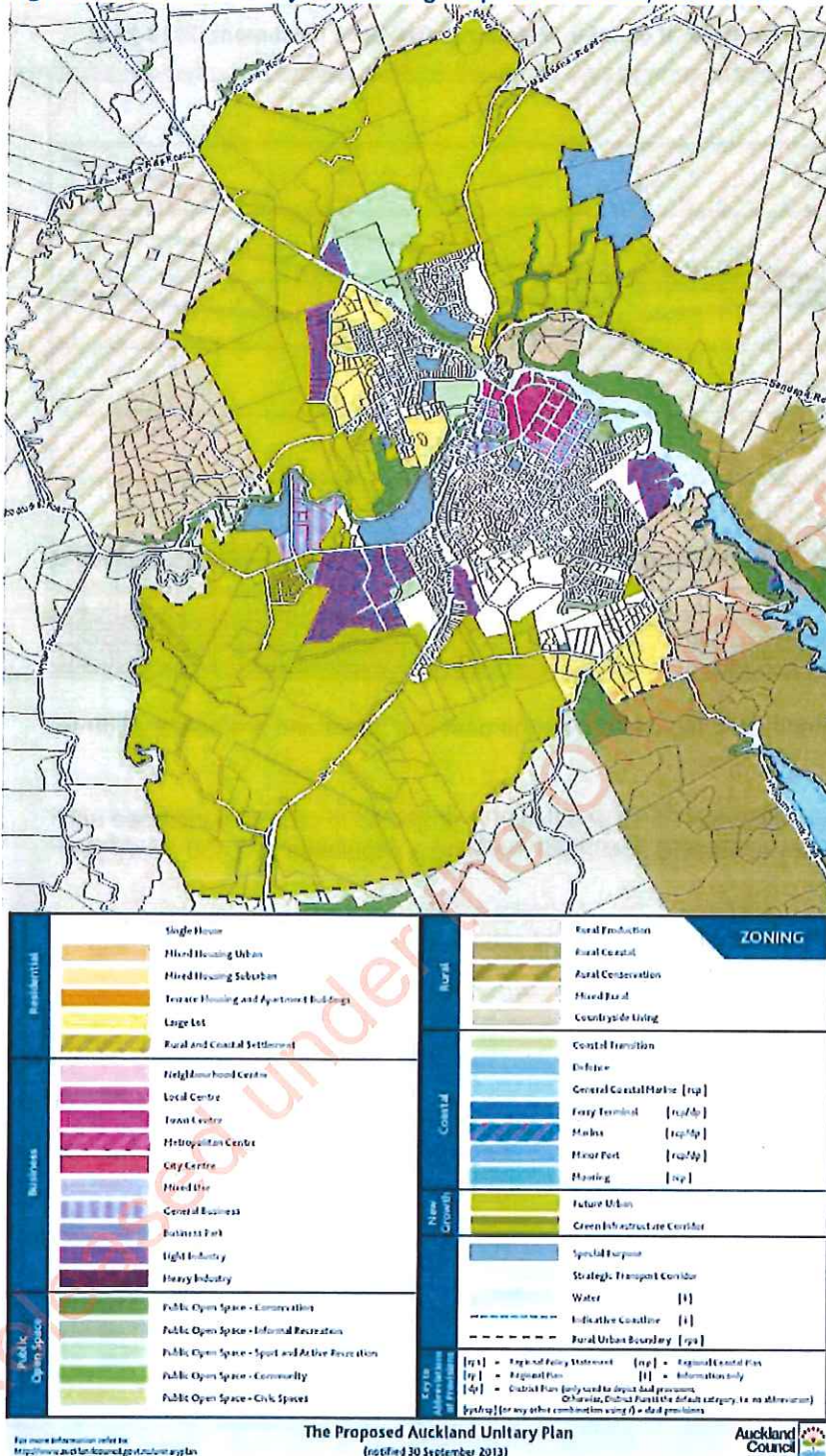


# Local Authority Planning Considerations

The Auckland Unitary Plan (AUP) – Operative in Part became operative on 15 November 2016.

Figure 3 shows the proposed land use zoning for the area surrounding Mahurangi College.

Figure 3: Auckland Unitary Plan Zoning – Operative in Part, Warkworth



The majority of the existing urban area is zoned *single house* or *large lot*. Much of the hinterland is zoned *future urban* with identified as a satellite metropolitan town in the Auckland Plan. The Future Urban Land Supply Strategy indicates the future urban land in the Warkworth area will be released in decade 2 (between 2022 and 2031).



## Private Developments

Information provided by Auckland Council indicates around 3,416 dwellings are planned or consented within Mahurangi College's home zone. Around 646 of these dwellings are scheduled for delivery by 2025. The remaining 2,766 are not yet scheduled for delivery.

Collectively, private developments could generate around 973 additional secondary age students for Mahurangi College's zone. **It is likely more private developments will come on stream in coming years as infrastructure is implemented and as future urban areas are rezoned.**

## Future Urban Land Supply Strategy<sup>1</sup>

Auckland Council's Future Urban Land Supply Strategy (FULSS) indicates that the future urban land north and north east of the existing Warkworth Town Centre will be release for development in the first half of decade two (2022-2026) with Warkworth south being released in the second half of decade two (2027-2031).

Table below is an extract from data presented in Auckland Council's *Infrastructure Provision Study for Future Urban Areas 2017-2027* (March 2017). The table details the proposed dwelling capacity of Future Urban Land in Mahurangi College's catchment as well as the potential number of additional students from each area if fully built out.

**Table 6 Proposed Dwelling Capacity and Anticipated Number of Students from Development Areas**

Proposed timing (Development ready)	Area	Proposed Dwelling Capacity	Potential Number of Additional Students <sup>2</sup>	
			Primary (Age 5-10 / Year 1-6)	Secondary (Age 11-17 / Year 7-13)
Actuals, contracted or planned 2012 - 2017	Warkworth North	N/A Business land	N/A	N/A
1 <sup>st</sup> half Decade One 2018 - 2022	Warkworth North (Development ready 2022)	2,300	560	660
1 <sup>st</sup> half Decade two 2028 - 2032	Warkworth South	3,700	890	1,060
2 <sup>nd</sup> half Decade two 2033 - 2037	Warkworth North East	1,500	360	430
<b>Total</b>		<b>7,500</b>	<b>1,810</b>	<b>2,150</b>

If all three areas are fully built out, development could generate around an additional 1,800 primary age students and around an additional 2,150 secondary age students.

The FULSS provides likely sequencing of when land will be released for development. Growth in the school age population in these areas will be very dependent on the uptake and speed of development once land becomes available.

<sup>1</sup> <http://www.aucklandcouncil.govt.nz/EN/planspoliciesprojects/plansstrategies/Councilstrategies/Pages/futureurbanlandsupplystrategy.aspx>

<sup>2</sup> The Ministry's usual methodology for determining the number of students from development is to multiple the dwelling by three to get total population. 8% of the population is assumed to be Age 5-10 (Year 1-6), 9.5% of the population is assumed to be age 11-17 (Year 7-13). Student numbers have been rounded up to the nearest 10.

## Future Roll Assessment

In this section, short range roll forecasts have been calculated to determine Mahurangi College's eligibility for additional teaching space in the short term. Long range roll projections out to 2043 have been calculated to determine the need for additional capacity for Mahurangi College in the long term.

### School's Forecasts

Table 7 shows roll forecasts provided by Mahurangi College for 2018.

**Table 7: Schools historical (2013-2017) and forecast roll for 2018**

October	Y 7	Y 8	Y 9	Y 10	Y 11	Y 12	Y 13	Total
2013	186	241	186	186	190	167	136	1,292
2014	189	191	245	185	188	173	140	1,311
2015	194	195	195	243	162	159	135	1,283
2016	214	204	214	190	218	149	123	1,312
2017	207	232	220	205	165	199	117	1,345
Forecast 2018	240	214	235	227	195	173	165	1,449

The School anticipates a further increase in the school's roll for March 2018, by 104 students. There is a significant number of Year 7 students forecast entering Mahurangi College in 2018.



## Short Range Roll Forecast

### Scenario One: In Zone Roll Forecast

Table 8 shows the number of students in each year level cohort living in Mahurangi College's zone and the potential number of these students which could enrol at Mahurangi College.

The Year 7 roll forecasts assumes Mahurangi College will enrol 80% of in zone Year 7 students.

**Table 8: Mahurangi College's Forecast Year 7 roll with home zone market share**

2017 Year Level	Student Count	In Zone and Attending Mahurangi College	Proportion Attending Mahurangi College	Forecast. Year 7 (80% market share)	Estimated Out of Zone Enrolments	Forecast. Year 7 Roll	Year
2	251			201	18	219	2021
3	237			190	18	208	2020
4	246			197	18	215	2019
5	275			220	18	238	2018
6	266			213	18	231	2017
7	247	196	79%				2017
8	256	217	85%				2017
9	240	209	87%				2017
10	234	196	84%				2017
11	236	156	66%				2017
12	281	191	68%				2017
13	187	109	58%				2017

The Year 2-5 cohorts in Mahurangi College's zone differ in size and as a result, Mahurangi College's in zone Year 7 roll could fluctuate over the next four years.

Table 9 shows historical peak rolls (2011-2017) and forecast peak rolls (2018-2021) for Mahurangi College. The Year 7 roll is based on forecasts from Table 8 and the calculated historical retention rates for Mahurangi College for Years 8-13 have been used.

**Table 9: Historical and Forecast Roll for Mahurangi College, 2011-2016**

March	Y 7	Y 8	Y 9	Y 10	Y 11	Y 12	Y 13+	Total
2012	231	189	202	184	178	155	128	1,267
2013	186	241	186	186	190	167	136	1,292
2014	189	191	245	185	188	173	140	1,311
2015	194	195	195	243	162	159	135	1,283
2016	214	204	214	190	218	149	123	1,312
2017	207	232	220	205	165	199	117	1,345
Forecast 2018	231	214	235	227	195	173	165	1,440
Forecast 2019	238	245	228	229	202	176	136	1,454
Forecast 2020	215	252	261	222	204	182	139	1,475
Forecast 2021	208	228	268	254	199	184	143	1,484
Forecast 2022	219	220	243	261	226	179	145	1,493

As at March 2017, Mahurangi College had a roll of 1,345 students which was an increase on its March 2016 roll. This increase is forecast to continue over the next six years; reaching 1,493 by 2022.

**This scenario will not be used in the rest of the report as it does not account for developments in Mahurangi College's home zone.**

### Scenario Two: In Zone Roll Forecast Including In Zone Development.

Table 10 shows the historical March 2017 and forecast in-zone peak rolls (2018-2022) for Mahurangi College. In zone development could generate around 973 secondary age students in Mahurangi College's zone and the school could enrol 133 of these students between 2017 and 2022.

The total number of out of zone students for the forecast period is based on the number of out of zone students anticipated by Mahurangi College in 2018 and is shown in Appendix 1.

The school's Year 7 roll forecast for 2018 has been used and additional students have been added to the roll as follows:

- 5 additional students in Year 7
- 27 additional students spread across Year 7-13 each year.

The calculated historical retention rates for Mahurangi College for Years 8-13 have been used to incorporate these extra students.

**Table 10: Mahurangi College's historical in-zone 2017 and forecast rolls (2018-2023) by year level**

March	Y 7	Y 8	Y 9	Y 10	Y 11	Y 12	Y 13+	Total
2017	196	217	209	196	156	191	109	1,274
Forecast 2018	222	198	215	213	186	163	157	1,354
Forecast 2019	245	236	212	209	188	167	126	1,383
Forecast 2020	250	259	252	206	184	168	130	1,449
Forecast 2021	255	264	276	245	183	164	129	1,516
Forecast 2022	260	270	281	269	217	163	125	1,585

As at March 2017, Mahurangi College had a roll of 1,345 students which was an increase on its March 2016 roll. This increase is forecast to continue over the next five years; reaching around 1,585 by 2022.

### Property Implication

Mahurangi College currently is in deficit and has insufficient capacity to accommodate forecast in zone rolls.

The school has indicated that it's out of zone roll will increase from 71 students in March 2017 to 95 in March 2018. This is largely as a result of a large increase in the Year 7 cohort. For the purposes of determining teaching space eligibility, **it will be assumed that Mahurangi College will not enrol any new Year 7 out of zone students beyond 2018.**

**Scenario two will be used for the remainder of this report as it's more reflective of in-zone growth.**



## Long Range Roll Projection

Figure 5 over the page shows the long range roll projections for Mahurangi College.

As Mahurangi College had not submitted its roll return with students correctly coded, it has been assumed that the college enrolled a static number of 70 out of zone students between 2013 and 2016 for its historical roll. The forecasts between 2017 and 2023 are based on the forecasted in zone rolls from Table 10. The projections between 2024 and 2043 are based on Statistics New Zealand population projections (2013 base) for the census area units that best match Mahurangi College's enrolment scheme. The projections account for the school's current share of students from this area.

Mahurangi College's roll increased between 2011 and 2014. A slight decrease was experienced in 2015 before increasing again in 2016 and 2017. This increase is projected to be continuous until at least 2024 with further increases projected after 2030.

Given the level of development in Mahurangi College's zone, growth is likely to be above the medium projection scenario, therefore the high projection will be used for the remainder of this analysis. Using the high projection scenario, Mahurangi College's roll is projected to increase over the long term and could reach an eventual roll of around 2,430 in 2043.

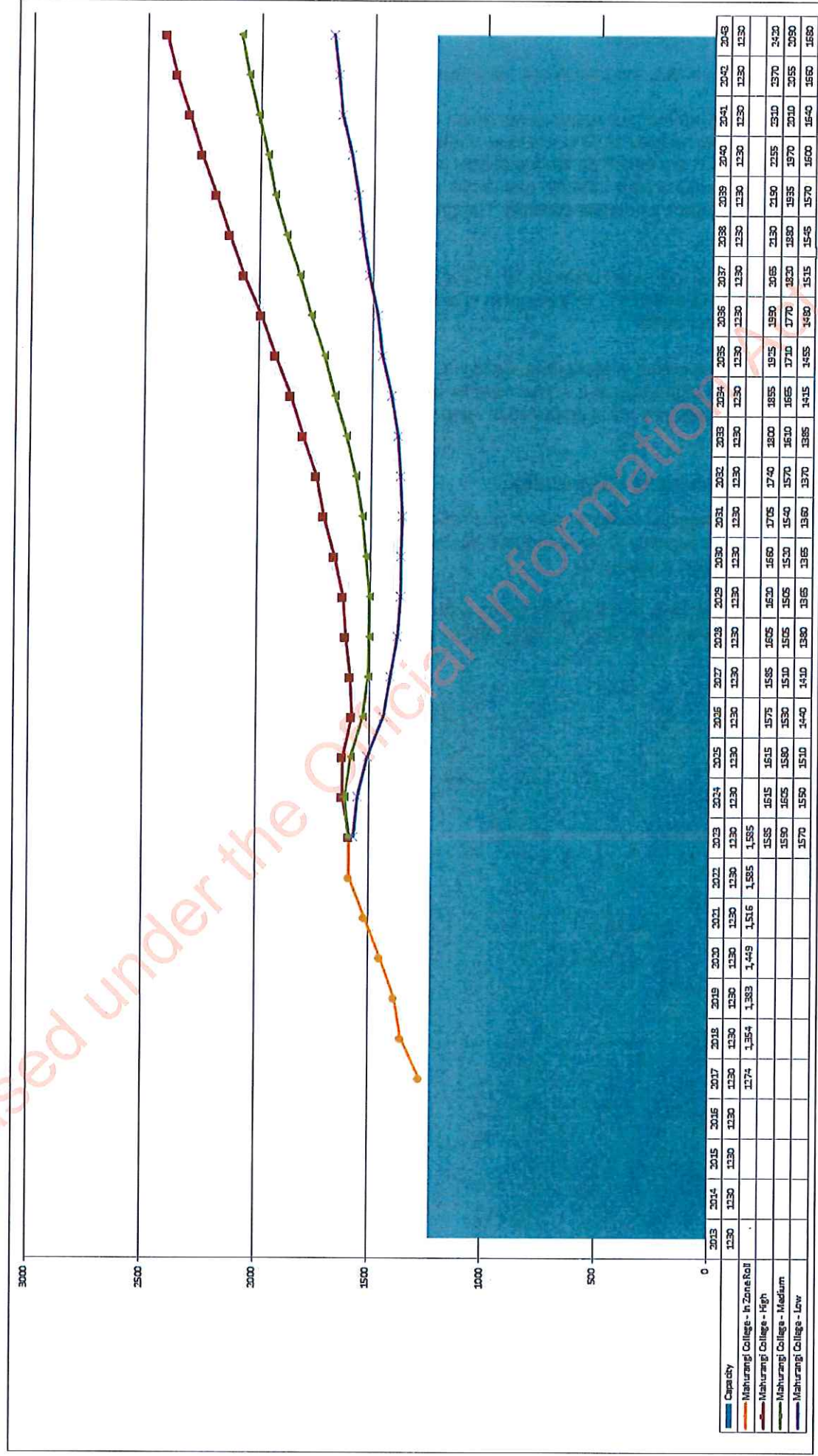
## Future Roll Assessment - Summary

Continued growth is projected in the long term as in zone development continues. Mahurangi College may eventually require teaching space capacity for around 2,500 students and the school's site will need to be master planned to cater for this growth when it occurs.

Given long range projections, and the potential for growth to occur above what has been projected, it is considered reasonable to master plan Mahurangi College's site for a future roll of 2,500 students.



Figure 5: Long Range Roll Projections for Mahurangi College, 2017–2043



## Network Considerations

Table 10 compares the aggregate peak rolls from 2013-2017 and forecast 2018-2020 rolls for Mahurangi College's network of schools with the total capacity of this network. Mahurangi College's forecasted rolls are those used in scenario two of the short term roll forecasts. Roll forecasts for 2018-2020 include forecast out of zone students.

**Table 10: Historical and Projected Roll of Mahurangi College and its Surrounding Network of Schools, 2012-2018**

Peak Rolls													
10th October Rolls for Primary (Y1-6 & Y1-8), 1st March Rolls for all others													
School Name	Type	TS Count	Current Capacity	2013	2014	2015	2016	2017	2018 proj <sup>3</sup>	2019 proj	2020 proj	OOZ (Mar 2017)	surplus/ deficit (on 2017 roll)
Rodney College	Y9-15	25	380	358	367	359	355	357	357	355	353	0	23
Mahurangi College	Y7-15	61	1,230	1,292	1,311	1,283	1,312	1,345	1,449	1,470	1,526	71	-115
Total		90	1,610	1,650	1,678	1,642	1,635	1,702	1,806	1,825	1,879	71	-92

The network roll has fluctuated over the past six years, increasing overall by 45 students. The roll of the network is forecast to increase continuously over the next three years

Both Mahurangi College and Rodney College operate an enrolment scheme. Rodney College is near capacity and Mahurangi College is significantly over its current capacity. As at March 2017, the network's roll was 1,702 students equating to a 106% capacity utilisation. If the network's roll grows as forecast, the capacity utilisation would be 117% by March 2020 which would be driven by growth at Mahurangi College.

### Community of Learning

Investing in Educational Success (IES) is a government initiative to help raise student achievement. This initiative focuses on raising teaching quality to help lift student achievement by encouraging groups of schools to share information; set goals; develop their best teaching and leadership resources; and, support teachers and principals. These groups are referred to as Communities of Learning and will usually be made up of around ten schools/kura, have a geographic basis, and reflect the educational pathway of students. Joining a Community of Learning is optional.

Mahurangi College is part of the Mahurangi Community of Learning along with Horizon School, Kaipara Flats School, Leigh School, Matakana School, Warkworth School and Snells Beach Primary School.

<sup>3</sup> These forecasts include the out of zone students shown in the attached teaching space template



# Options

Mahurangi College is expected to grow over the long term as in-zone development progresses over time.

## Enrolment Scheme

Mahurangi College operates an enrolment scheme home zone and out of zone enrolments currently make up around 5% of the school's roll.

Mahurangi College was operating at 109% of its current capacity as at March 2017. The school's in zone roll is projected to grow over the next five years and the school will need to manage out of zone enrolments to reduce further overcrowding in the short term.

At this time, Mahurangi College's home zone boundaries are considered appropriate and no changes are recommended.

## Change of Structure

No change of structure would alleviate overcrowding at Mahurangi College.

## Short term Demand

Although Mahurangi College is on a reasonably large site, the current building platform is restricted and the site will need to be carefully planned to ensure additional teaching space can be accommodated. Short term in zone roll forecasts for Mahurangi College indicate that the school's roll could increase to around 1,585 students by 2022. If Mahurangi College's roll increases as forecasted, this will result in further teaching space deficit. **Therefore, it is recommended that Mahurangi College be provided a capacity of around 1,600 student spaces by 2022.**

## Master Planning

As continued growth is projected for Mahurangi College's catchment in the long term, Mahurangi College may eventually require teaching space capacity for around 2,500 students, if the roll follows the high scenario. **The school's site will need to be master planned to cater for this growth when it occurs.**

If the proposed dwelling capacity of Future Urban Land in Mahurangi College's catchment as well as the potential number of additional students from each area if fully built out, further secondary provisioning may be required.



## Conclusion

Mahurangi College has experienced roll growth over the past few years, with a peak roll of 1,345 students experienced in March 2017. This is an overall increase of 94 students experienced between March 2011 and March 2017. Despite this being slow and steady growth, **Mahurangi College is operating at 109% of its current capacity of 1,230 student spaces.**


Statistics New Zealand medium projection scenario for Mahurangi College's catchment indicates an overall increase in the age 11-17 population between 2017 and 2043 of an additional 490 students. **However, under the high scenario, Statistics New Zealand projects an overall increase of 990 age 11-17 students in Mahurangi College's catchment between 2017 and 2043.**

Short term roll forecasts for Mahurangi College indicate that the school's roll could increase to around 1,585 students by March 2022 under Scenario 2. If Mahurangi College's roll increases as forecast, this will result in further teaching space deficit. Further short term roll forecasts indicate that Mahurangi College could face further roll increases upwards of 1600 students. Therefore, it is recommended that this deficit be addressed and further provisioning be provided in order to address short term roll needs.

In addition to short term roll forecasts, given Mahurangi College is situated within an area of high growth and long range projections for the school show in zone growth increasing over time, reaching a roll of around 2,500 students by 2043. Therefore, we recommend a master plan roll of around 2,500 students.

As at March 2017 the network's roll was 1,702 students which equates to a 106% utilisation of the network's capacity of 1,610 student spaces. This means we need to plan for additional capacity in the network. If the proposed dwelling capacity of Future Urban Land in Mahurangi College's catchment as well as the potential number of additional students from each area if fully built out, further secondary provisioning may be required.

Network Analyst  
Marc Dutton, *Drafter*



Date:

30/11/17

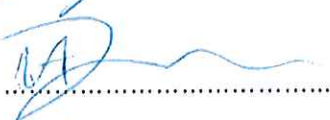
Lead Network Advisor  
Nick Blythe, *Reviewer*



Date:

30/11/2017

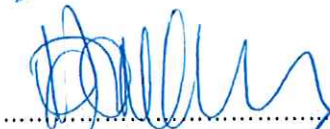
Senior Advisor, Sector Enablement and Support  
Niall Duncan, *Reviewer*



Date:

30/11/17

Regional Property Advisor  
Yasmin Renders, *Reviewer*



Date:

30-11-17

Infrastructure Manager  
Michael Stride, *Reviewer*



Date:

.....

# Recommendation

That Mahurangi College:

- Does not enrol anymore new Year 7 out of zone students beyond 2018

That the Ministry:

- Provides additional capacity at Mahurangi College in a staged manner to accommodate projected deficits in student spaces, as outlined in the table below
- Monitors development in the wider area to ensure there is sufficient secondary capacity to accommodate projected growth

Roll	Number of Students	Year Required By
<b>Current Roll</b> What is required as of now. <b>Note: the roll exceeds current capacity</b>	1,350	2017
<b>Transition Roll</b> <i>The highest <b>in-zone</b> roll expected before the completion of the property project plus space for existing out of zone students while they transition through the school</i>	1,585	2022
<b>Build Roll</b> <i>The projected <b>in-zone</b> roll by the stated year</i>	1,600	2023
<b>Master Planning Roll</b> <i>The greatest projected number of students the school will need to cater for over the next 10-25 years and is used to future proof property on the school site. This is a planning roll, with no budget for students over and above the Build Roll.</i>	2,500*	2043

\* This roll is only required if additional secondary capacity is not added to the catchment.

For roll projections outside of the time frames presented above, refer to Figure 5 (Page 14).

Network Manager  
(Janet Schofield) Network Authoriser

*Janet Schofield*

Date: 30/11/17

Regional Property Manager  
(Sandra Orr) EIS Authoriser

*Sandra Orr*

Date: 6/12/17



Lifting aspiration and raising educational  
achievement **for every New Zealander**



# New Teaching Space Template

Complete all white boxes

Version: v1.2015

All budgets in this template exclude GST

School number   
School name   
School type

Year for which classroom is to be provided

## Section 1: PMIS Details

Total number of classrooms in PMIS (excluding gym teaching spaces)   
Classrooms approved but not yet complete (including in lieu and work in progress)   
Actual net area in PMIS (guide entitlement page)  m2  
Total net gym area in PMIS  m2

## Section 2: School Roll Details

	Yr 0-1	Yr 2-3	Yr 4-6	Yr 7-8	Yr 9	Yr 10	Yr 11	Yr 12	Yr 13 +	Total
Total roll				439	220	205	165	199	117	1,345
Out of zone roll				26	11	9	9	8	8	71
Maori immersion roll										0
Non Maori immersion roll	0	0	0	413	209	196	156	191	109	1,274

Total high ORS   
Total very high ORS   
Outside technology roll

## Section 3: Classroom Deficiency

Predicted classroom entitlement   
Current number of classrooms   
Number of classrooms deficient

## Section 4: Gym Deficiency

Predicted gym entitlement  
 Current gym teaching spaces  
 Gym teaching space deficiency

## Section 5: Budget Calculation

	Standard	Specialist	Gym	
Number of teaching spaces	<input type="text" value="0"/>	<input type="text" value="0"/>	<input type="text" value="0.0"/>	
Area added (net m2)	<input type="text" value="0"/>	<input type="text" value="0"/>	<input type="text" value="0"/>	
Gross classroom budget	<input type="text" value="\$0"/>	<input type="text" value="\$0"/>	<input type="text" value="\$0"/>	Gross gym budget
New multistory block?	<input type="text" value="No"/>	<input type="text" value="No"/>		
Lift allowance	<input type="text" value="\$0"/>	<input type="text" value="\$0"/>		
Site works allowance	<input type="text" value="\$0"/>	<input type="text" value="\$0"/>	<input type="text" value="\$0"/>	
Subtotal	<input type="text" value="\$0"/>	<input type="text" value="\$0"/>	<input type="text" value="\$0"/>	

Total Construction Budget

Does school have an enrolment scheme?   
If No - What is being done to establish an enrolment scheme?

Date last reviewed

## Section 6: Guide Entitlement

Current net area  m2  
New area  m2  
Total net area  m2  
Net area entitlement  m2  
Net surplus / (deficiency)  m2

# New Teaching Space Template

Complete all white boxes

Version: v1.2015

All budgets in this template exclude GST

School number  Year for which classroom is to be provided   
School name   
School type

## Section 1: PMIS Details

Total number of classrooms in PMIS (excluding gym teaching spaces)   
Classrooms approved but not yet complete (including in lieu and work in progress)   
Actual net area in PMIS (guide entitlement page)  m2  
Total net gym area in PMIS  m2

## Section 2: School Roll Details

	Yr 0-1	Yr 2-3	Yr 4-6	Yr 7-8	Yr 9	Yr 10	Yr 11	Yr 12	Yr 13 +	Total
Total roll				454	235	227	195	173	165	1,449
Out of zone roll				34	20	14	9	10	8	95
Maori Immersion roll										0
Non Maori immersion roll	0	0	0	420	215	213	186	163	157	1,354

Total high ORS   
Total very high ORS   
Outside technology roll

## Section 3: Classroom Deficiency

	Current
Predicted classroom entitlement	<input type="text" value="69"/>
Current number of classrooms	<input type="text" value="65"/>
Number of classrooms deficient	<input type="text" value="4"/>

## Section 4: Gym Deficiency

<input type="text" value="2.0"/>	Predicted gym entitlement
<input type="text" value="3.6"/>	Current gym teaching spaces
<input type="text" value="0.0"/>	Gym teaching space deficiency

## Section 5: Budget Calculation

	Standard	Specialist	Gym	
Number of teaching spaces	<input type="text" value="4"/>	<input type="text" value="0"/>	<input type="text" value="0.0"/>	
Area added (net m2)	<input type="text" value="296"/>	<input type="text" value="0"/>	<input type="text" value="0"/>	
Gross classroom budget	<input type="text" value="\$769,600"/>	<input type="text" value="\$0"/>	<input type="text" value="\$0"/>	Gross gym budget
New multistory block?	<input type="text" value="No"/>	<input type="text" value="No"/>		
Lift allowance	<input type="text" value="\$0"/>	<input type="text" value="\$0"/>		
Site works allowance	<input type="text" value="\$65,000"/>	<input type="text" value="\$0"/>	<input type="text" value="\$0"/>	
Subtotal	<input type="text" value="\$834,600"/>	<input type="text" value="\$0"/>	<input type="text" value="\$0"/>	

## Total Construction Budget

Does school have an enrolment scheme?

Date last reviewed

If No - What is being done to establish an enrolment scheme?

## Section 6: Guide Entitlement

Current net area  m2 Net area entitlement  m2  
New area  m2  
Total net area  m2 Net surplus / (deficiency)  m2



## New Teaching Space Template

Complete all white boxes

Version: v1.2015

All budgets in this template exclude GST

School number  Year for which classroom is to be provided   
 School name   
 School type

### Section 1: PMIS Details

Total number of classrooms in PMIS (excluding gym teaching spaces)   
 Classrooms approved but not yet complete (including in lieu and work in progress)   
 Actual net area in PMIS (guide entitlement page)  m2  
 Total net gym area in PMIS  m2

### Section 2: School Roll Details

	Yr 0-1	Yr 2-3	Yr 4-6	Yr 7-8	Yr 9	Yr 10	Yr 11	Yr 12	Yr 13 +	Total
<b>Total roll</b>				499	228	229	202	176	136	1,470
Out of zone roll				18	16	20	14	9	10	87
Maori immersion roll										0
Non Maori immersion roll	0	0	0	481	212	209	188	167	126	1,383

Total high ORS   
 Total very high ORS   
 Outside technology roll

### Section 3: Classroom Deficiency

**Current**  
 Predicted classroom entitlement   
 Current number of classrooms   
 Number of classrooms deficient

### Section 4: Gym Deficiency

Predicted gym entitlement  
 Current gym teaching spaces  
 Gym teaching space deficiency

### Section 5: Budget Calculation

	Standard	Specialist	Gym	
Number of teaching spaces	5	0	0.0	
Area added (net m2)	370	0	0	
Gross classroom budget	\$962,000	\$0	\$0	Gross gym budget
New multistory block?	No	No		
Lift allowance	\$0	\$0		
Site works allowance	\$81,250	\$0	\$0	
<b>Subtotal</b>	<b>\$1,043,250</b>	<b>\$0</b>	<b>\$0</b>	

**Total Construction Budget**

Does school have an enrolment scheme?   
 If No - What is being done to establish an enrolment scheme?

Date last reviewed

### Section 6: Guide Entitlement

Current net area  m2 Net area entitlement  m2  
 New area  m2  
 Total net area  m2 Net surplus / (deficiency)  m2



## New Teaching Space Template

Complete all white boxes

Version: v1.2015

All budgets in this template exclude GST

School number  Year for which classroom is to be provided   
 School name   
 School type

### Section 1: PMIS Details

Total number of classrooms in PMIS (excluding gym teaching spaces)   
 Classrooms approved but not yet complete (including in lieu and work in progress)   
 Actual net area in PMIS (guide entitlement page)  m2  
 Total net gym area in PMIS  m2

### Section 2: School Roll Details

	Yr 0-1	Yr 2-3	Yr 4-6	Yr 7-8	Yr 9	Yr 10	Yr 11	Yr 12	Yr 13 +	Total
Total roll				509	270	222	204	182	139	1,526
Out of zone roll				0	18	16	20	14	9	77
Maori immersion roll										0
Non Maori immersion roll	0	0	0	509	252	206	184	168	130	1,449

Total high ORS   
 Total very high ORS   
 Outside technology roll

### Section 3: Classroom Deficiency

Current  
 Predicted classroom entitlement   
 Current number of classrooms   
 Number of classrooms deficient

### Section 4: Gym Deficiency

Predicted gym entitlement  
 Current gym teaching spaces  
 Gym teaching space deficiency

### Section 5: Budget Calculation

	Standard	Specialist	Gym
Number of teaching spaces	7	0	0.0
Area added (net m2)	518	0	0
Gross classroom budget	\$1,346,800	\$0	\$0
New multistory block?	No	No	
Lift allowance	\$0	\$0	
Site works allowance	\$113,750	\$0	\$0
Subtotal	\$1,460,550	\$0	\$0

Total Construction Budget

Does school have an enrolment scheme?   
 If No - What is being done to establish an enrolment scheme?

### Section 6: Guide Entitlement

Current net area  m2 Net area entitlement  m2  
 New area  m2  
 Total net area  m2 Net surplus / (deficiency)  m2



# New Teaching Space Template

Complete all white boxes

Version: v1.2015

All budgets in this template exclude GST

School number  Year for which classroom is to be provided   
 School name   
 School type

## Section 1: PMIS Details

Total number of classrooms in PMIS (excluding gym teaching spaces)   
 Classrooms approved but not yet complete (including in lieu and work in progress)   
 Actual net area in PMIS (guide entitlement page)  m2  
 Total net gym area in PMIS  m2

## Section 2: School Roll Details

	Yr 0-1	Yr 2-3	Yr 4-6	Yr 7-8	Yr 9	Yr 10	Yr 11	Yr 12	Yr 13 +	Total
Total roll				519	276	263	199	184	143	1,684
Out of zone roll				0	0	18	16	20	14	68
Maori immersion roll										0
Non Maori immersion roll	0	0	0	519	276	245	183	164	129	1,516

Total high ORS   
 Total very high ORS   
 Outside technology roll

## Section 3: Classroom Deficiency

	Current
Predicted classroom entitlement	<input type="text" value="75"/>
Current number of classrooms	<input type="text" value="65"/>
Number of classrooms deficient	<input type="text" value="10"/>

## Section 4: Gym Deficiency

<input type="text" value="2.3"/>	Predicted gym entitlement
<input type="text" value="3.6"/>	Current gym teaching spaces
<input type="text" value="0.0"/>	Gym teaching space deficiency

## Section 5: Budget Calculation

	Standard	Specialist	Gym	
Number of teaching spaces	<input type="text" value="10"/>	<input type="text" value="0"/>	<input type="text" value="0.0"/>	
Area added (net m2)	<input type="text" value="740"/>	<input type="text" value="0"/>	<input type="text" value="0"/>	
Gross classroom budget	<input type="text" value="\$1,924,000"/>	<input type="text" value="\$0"/>	<input type="text" value="\$0"/>	Gross gym budget
New multistory block?	<input type="text" value="No"/>	<input type="text" value="No"/>		
Lift allowance	<input type="text" value="\$0"/>	<input type="text" value="\$0"/>		
Site works allowance	<input type="text" value="\$162,500"/>	<input type="text" value="\$0"/>	<input type="text" value="\$0"/>	
Subtotal	<input type="text" value="\$2,086,500"/>	<input type="text" value="\$0"/>	<input type="text" value="\$0"/>	

Total Construction Budget

Does school have an enrolment scheme?   
 If No - What is being done to establish an enrolment scheme?

## Section 6: Guide Entitlement

Current net area  m2 Net area entitlement  m2  
 New area  m2  
 Total net area  m2 Net surplus / (deficiency)  m2

# New Teaching Space Template

Complete all white boxes

Version: v1.2015

All budgets in this template exclude GST

School number

24

Year for which classroom is to be provided

2022

School name

Mahurangi College

School type

Secondary (Y7-15)

## Section 1: PMIS Details

Total number of classrooms in PMIS (excluding gym teaching spaces)

65

Classrooms approved but not yet complete (including in lieu and work in progress)

Actual net area in PMIS (guide entitlement page)

m2

Total net gym area in PMIS

1,329 m2

## Section 2: School Roll Details

Total roll

Out of zone roll

Maori immersion roll

Non Maori immersion roll

Yr 0-1	Yr 2-3	Yr 4-6	Yr 7-8	Yr 9	Yr 10	Yr 11	Yr 12	Yr 13 +	Total
			530	281	269	235	179	145	1,639
			0	0	0	18	16	20	54
									0
0	0	0	530	281	269	217	163	125	1,585

Total high ORS

10

Total very high ORS

4

Outside technology roll

## Section 3: Classroom Deficiency

Predicted classroom entitlement

Current

77

Current number of classrooms

65

Number of classrooms deficient

12

## Section 4: Gym Deficiency

2.4

Predicted gym entitlement

3.6

Current gym teaching spaces

0.0

Gym teaching space deficiency

## Section 5: Budget Calculation

Number of teaching spaces

Standard

Specialist

Gym

Area added (net m2)

12

0

0.0

Gross classroom budget

\$2,308,800

\$0

\$0

Gross gym budget

New multistory block?

No

No

Lift allowance

\$0

\$0

Site works allowance

\$195,000

\$0

Subtotal

\$2,503,800

\$0

\$0

Total Construction Budget

\$2,503,800

Does school have an enrolment scheme?

Date last reviewed

If No - What is being done to establish an enrolment scheme?

## Section 6: Guide Entitlement

Current net area

0

m2

Net area entitlement

10,188

m2

New area

888

m2

Total net area

888

m2

Net surplus / (deficiency)

-9,300

m2