



Briefing Note: June update on the Auckland Enrolment Scheme Programme

To:	Hon Chris Hipkins, Minister of Education		
Date:	15 June 2020	Priority:	Medium
Security Level:	In Confidence	METIS No:	1224666
Drafter:	Jess Wood-Waikari	DDI:	09 632 9470
Key Contact:	Janet Schofield	DDI:	09 632 9433
Messaging seen by Communications team:	No	Round Robin:	No

Purpose of Report

The purpose of this paper is for you to:

Note the update on the progress of the Auckland Enrolment Scheme Programme.

Agree that this Briefing will not be proactively released at this time because the work is ongoing and some of the outcomes and decisions are subject to change through public consultation.

☒ **Agree** ☐ **Disagree**

Summary

- This is the June update on the Auckland Enrolment Scheme Programme that covers the period from our last report in March 2020. The next update is planned for mid-July.
- Programme progress has been impacted by the lockdown period and there is an overall one month delay to phase one of the programme.
- Of the 60 schools in phase one: 26 schemes have been completed, 11 schools are consulting in Term 2, 7 schools are consulting in Term 3, and 15 schools are engaged in bundle meetings and the scheme at 1 school is on hold.
- Even with the delay to the programme due to COVID-19, we expect the majority of the 60 schools in phase one to be completed.

- This briefing note provides an update on the Hobsonville bundle (Scott Point Primary School, Hobsonville School and Hobsonville Point Primary School) and the decisions on those schemes.
- The majority of the enrolment schemes and amendments in the programme are classified as low risk. This briefing note provides a summary of planned mitigations and actions (taking into account COVID-19 Alert Levels) to manage the moderate (amber) risk levels at schools across the programme.



Katrina Casey
Deputy Secretary
Sector Enablement and Support

16/6/2020



Hon Chris Hipkins
Minister of Education

1/7/2020

Programme reporting

1. Phase one began in late September 2019. Progress has been made on each of the 60 schools included in this phase.
2. Overall we expect enrolment schemes for the majority of the 60 phase one schools to be completed and to take effect in Term 1, 2021.
3. The Secretary's instructions relating to enrolment schemes require all schools of the same type with enrolment schemes in the Auckland region to set dates for the selection of out of zone enrolments.
4. The programme is based on schemes being completed in time for the Auckland September/October ballot dates so they can take effect in Term 1, 2021.
5. The ballot dates for secondary, intermediate and primary schools are set out below:

	Application closing date	Ballot date
Secondary and Intermediate schools	Wednesday 2 September 2020	Wednesday 9 September 2020
Primary schools	Wednesday 14 October 2020	Wednesday 21 October 2020

6. Re-engaging with schools post-lockdown has been slow, as engaging and progressing enrolment schemes has been a lesser priority for schools. This has led to the risk that some schemes at schools won't be in place to meet Auckland combined ballot dates so they can take effect in Term 1, 2021.
7. Twenty six of the 60 schools in phase one have been completed.
8. Eleven schools will be able to consult with their community within weeks 8-12 of Term 2 (8 June – 3 July 2020). These schemes are expected to be approved by the Ministry by end of July, in place for the September/October ballots, to take effect Term 1, 2021.
9. Seven schools will be able to consult with their community within weeks 1-4 of Term 3 (20 July – 14 August 2020). These schemes are expected to be approved by the Ministry by end of August in place for the September/October ballots, to take effect Term 1, 2021.
10. The delays caused by COVID-19 has meant 15 schools are still involved in bundle meetings and require consultation with communities. This will mean these schools may not meet the timeframes for the combined ballot dates so they can take effect in Term 1, 2021.
11. According to the Education Act, if a scheme is approved too late in the year for the school to comply with the common dates agreed by other schools, then the board will need to organise a "one-off" pre-enrolment process under Secretary's Instruction 31.
12. On that basis and provided that there is sufficient notice for communities, these schemes may still be able to take effect Term 1, 2021. We will be able to update you on the progress of these schemes in our next report in July.

13. Progress of each of the 60 schools is outlined in Table 1 below.

Table 1

Implementation / Amendment stage	Progress / # of schools	Name of schools
Complete	26	<ul style="list-style-type: none"> Oranga School took effect Term 2 2019 Kaipara College, Kaipara Flats School, Waitoki School and Mangere College planned took effect Term 1 2020 Paerata School took effect 1 March 2020 Pasadena Intermediate took effect Term 2 2020 Henderson High School and Rutherford School to take effect May 2020 Albany School to take effect Term 3 2020 Macleans Primary School to take effect 20 July 2020 Tamaoho School to take effect Jan 1 2021 Sunnyvale School, Mangatawhiri School, Target Road School and Scott Point Primary school to take effect Term 1 2021 10 schools complete as not required to amend, completed as part of bundle (Waitakere College, Howick Primary School, Bucklands Beach Primary, Mellons Bay School, Aorere College, Southern Cross Campus, Onehunga High School, Pukekohe East School, Edgewater College and One Tree Hill College)
Schools consulting in Term 2 2020	11	<ul style="list-style-type: none"> Royal Road School and Birdwood School Rosehill Intermediate and Papakura Intermediate Bairds Mainfreight and Flat Bush School Marlborough School Hay Park, May Road School and Marshall Laing School Pukekohe Hill School
Schools consulting in Term 3 2020	7	<ul style="list-style-type: none"> Wellsford Primary School Glendowie School, Selwyn College and Tāmaki College Elm Park School and Pakuranga Heights School Mauku School
Schools involved in bundle meetings	15	<ul style="list-style-type: none"> Pukekohe North School Hingaia Drury bundle (2): Drury West Primary (new school) and Hingaia South School (relocation of Park Estate School) Manurewa bundle (8 schools, 5 new schemes, 3 possible amendments): Homai School, Leabank School, Manurewa West School, Manurewa South School, Manurewa East School, Puhinui School, Rowandale School, Wiri Central School Oranga One Tree Hill bundle (4 schools, 1 new scheme, 3 possible amendments): Te Papapa School, Royal Oak School, Onehunga Primary School and Ellerslie School
On hold	1	<ul style="list-style-type: none"> Tāmaki Primary School

Hobsonville bundle update

14. Decisions on the schemes for the Hobsonville bundle (Scott Point Primary School, Hobsonville School and Hobsonville Point Primary School) have recently been signed and communicated to the schools.
15. In total, there were 106 submissions across Scott Point Primary School and Hobsonville Point Primary School. There were no submissions made to Hobsonville School.
16. Concerns raised in the submissions related to: distance, safety and walkability for students, traffic congestion, impact on siblings, effect on communities; and the adverse impact on first buyers of Kāinga Ora Hobsonville Point homes.
17. The first part of Hobsonville Point that was developed was the Kāinga Ora master-planned community. Submissions were sorted according to the Kāinga Ora Precincts as certain neighbourhoods or precincts presented predominantly common opinions allowing us to understand the voice of those communities. Annex 1 shows the community submissions plotted against Kāinga Ora Precincts.
18. The majority of submissions were received from residents of Kāinga Ora precincts known as "Buckley A" and "Buckley B". These submissions strongly insisted that the Hobsonville Point Primary School zone be extended to include these areas based on proximity of the areas to the school and being longer standing members of the community as first buyers of Kāinga Ora homes.
19. Submissions were also received from home owners in a residential area currently under development directly over the road from Hobsonville Point Primary. These home owners do not yet reside in the homes; however requested to be a part of the Hobsonville Point Primary school zone based on close proximity.
20. After consideration of the submissions and noting the strong voice of the communities within the Kāinga Ora development precinct areas, the recommended boundaries of Hobsonville Point Primary School include existing urban areas, with grand parenting recommended for a small number of existing occupied streets in a nearby Te Uru Kāinga Ora precinct.
21. An overlap area has also been implemented for new houses directly opposite Hobsonville Point Primary School so they can have the option of attending Hobsonville Point Primary or Scott Point Primary.
22. The Hobsonville Point Primary zone has been extended to include the Secondary school as this was strongly requested by the Board of Trustees.
23. This decision has been communicated to the schools and formal letters sent. The schools have agreed to pass board resolutions to adopt the schemes at their next meeting. The public will be given notice in late June or early July depending on Board of Trustee meeting dates.
24. As we have largely met the communities' requests for adjustments to zones we are not anticipating the media attention we initially received regarding the schemes and zones. However, we will continue to manage risks in line with the stakeholder and communications plan.


25. We anticipate that this decision may still be contentious for future residents of the Hobsonville and Scott Point community as some new residents of not yet inhabited homes will be directed to a school further away than a local school when they do eventually move into their new homes.
26. Annex 2 outlines the overview map of Hobsonville Point Primary school, Hobsonville School and Scott Point Primary School zones
27. The new scheme for Scott Point Primary School and amendments of Hobsonville Point Primary School and Hobsonville School will be implemented when Scott Point Primary School opens in Term 1, 2021.

Enrolment schemes and amendments at school classified at a moderate (amber) risk level

28. Schemes at six schools across the programme have been identified as being at moderate risk. The remainder of the 60 schools in the programme (54 schools) are considered to be low risk.
29. Table 2 below provides a summary of proposed mitigations and actions to manage moderate (amber) risk levels of these 6 schools.

Table 2

School	Risk and issue comment and mitigation strategy	Update since April 2020
1. Te Papapa School	<p>s 9(2)(g)(i)</p> <p>Mitigation: We will continue to work with the school to explain impacts of known developments and the need for a zone. We will work collaboratively with the Board to ensure the zone meets the needs of the school. We are continuing to communicate around the decision made on the Oranga School zone and will consider the decision to have another conversation with the school on this.</p> <p>s 9(2)(g)(i)</p> <p>Mitigation: A coordinated Ministry team will propose to meet with Whānau Māori to discuss their concerns and change engagement processes going forward.</p>	<p>The Principal has suggested a meeting with the Ministry, school representatives and Whānau Māori. We are currently speaking internally about how we approach this meeting.</p> <p>Due to there being significant short-medium term growth in Oranga due to new housing, Te Papapa School requires a zone. The fall-back position is to work at the pace of the Board which will likely mean it is delayed until Whānau Māori and the Oranga School complaint concerns are addressed.</p>
2. Rosehill Intermediate	<p>s 9(2)(g)(i)</p> <p>Mitigation: A bundle meeting has been held giving neighbouring schools an opportunity to give feedback on the zones before formal consultation to reduce concerns when formal consultation begins.</p>	<p>The Intermediate schools have agreed to draft zones and are in agreement to consult on the same timeline likely in early June.</p> <p>Neighbouring schools will be informed of the outcome of the bundle meeting, the rationale for the draft zones and the process for providing formal feedback.</p>
3. Papakura Intermediate	Same as above as in bundle together	Same as above as in bundle together
4. Glendowie College	<p>s 9(2)(g)(i)</p> <p>Mitigation: Tāmaki College proposed zone does not require the others to amend nor are there capacity concerns for those schools. It is the wish of Selwyn College for the amendment between them and Glendowie College. Glendowie College has had the opportunity to</p>	<p>Selwyn College has provided feedback since the bundle meeting held in February. We are following up with Glendowie College.</p> <p>Tāmaki College will progress to consultation on their zone, and Selwyn College will consult on the amendment to their zone. There is no proposed change to Glendowie College zone so they are not required to consult themselves.</p>

School	Risk and issue comment and mitigation strategy	Update since April 2020
5. Selwyn College	<p>provide feedback. Selwyn College can progress with consultation on the amendment and Glendowie College and their community will be invited to make formal submissions.</p> <p>Same as above as in bundle together</p>	<p>Same as above as in bundle together</p>
6. Rowandale School	<p>s 9(2)(g)(i)</p>  <p>Mitigation: Three bundle meetings have been facilitated and a second proposed zone option has been created to reflect feedback from all schools. A clear rationale has been communicated as to the need for zoning across the area, and the benefits of the bundled approach for communities.</p>	<p>The second enrolment scheme option will be discussed with the unzoned schools in June.</p> <p>Another wider bundle meeting will be held when proposed boundaries are ready for consultation to inform schools around the rationale, and the process to provide formal feedback.</p> <p>The Ministry will emphasise to neighbouring schools that zone overlaps provide students with options and grand parenting could be suggested.</p>

Next Steps

- 30. Programme managers are recommencing engagement with bundles of schools on enrolment schemes now we are at Alert Level 1 to progress consultation on schemes to take effect Term 1 2021.
- 31. The next update on the programme will be provided by mid-July 2020.

Proactive Release

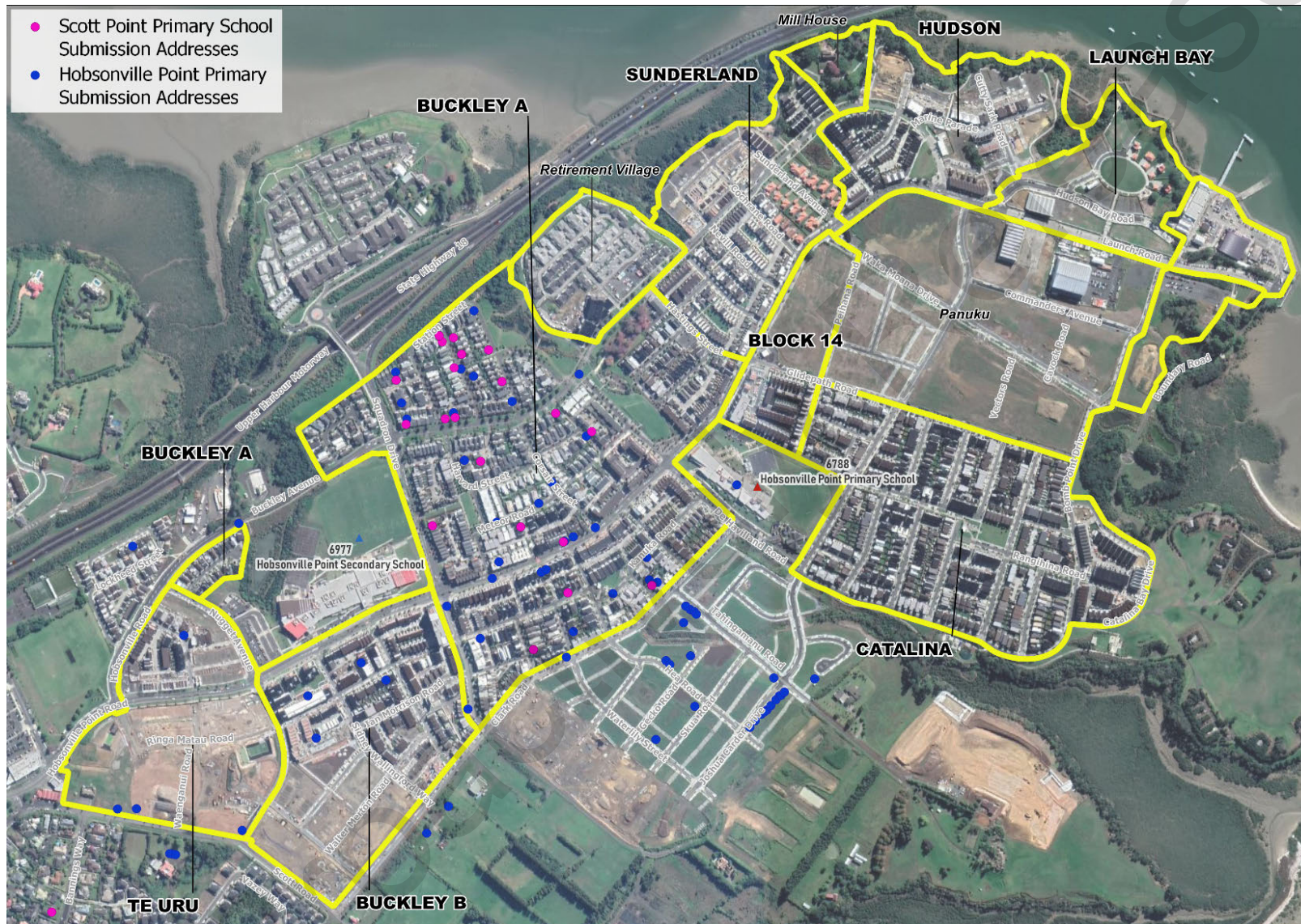
- 32. We recommend that this Briefing is not released at this time because the work is ongoing and some of the outcomes and decisions are subject to change through public consultation.

Annexes

- Annex 1: Community submissions plotted against Hobsonville Point Kainga Ora Precincts
- Annex 2: Final overview map of Hobsonville Point Primary school, Hobsonville School and Scott Point Primary School

Annex 1:

Community submissions plotted against Hobsonville Point Kainga Ora Precincts



Annex 2:

Final overview map of Hobsonville Point Primary school, Hobsonville School and Scott Point Primary School

