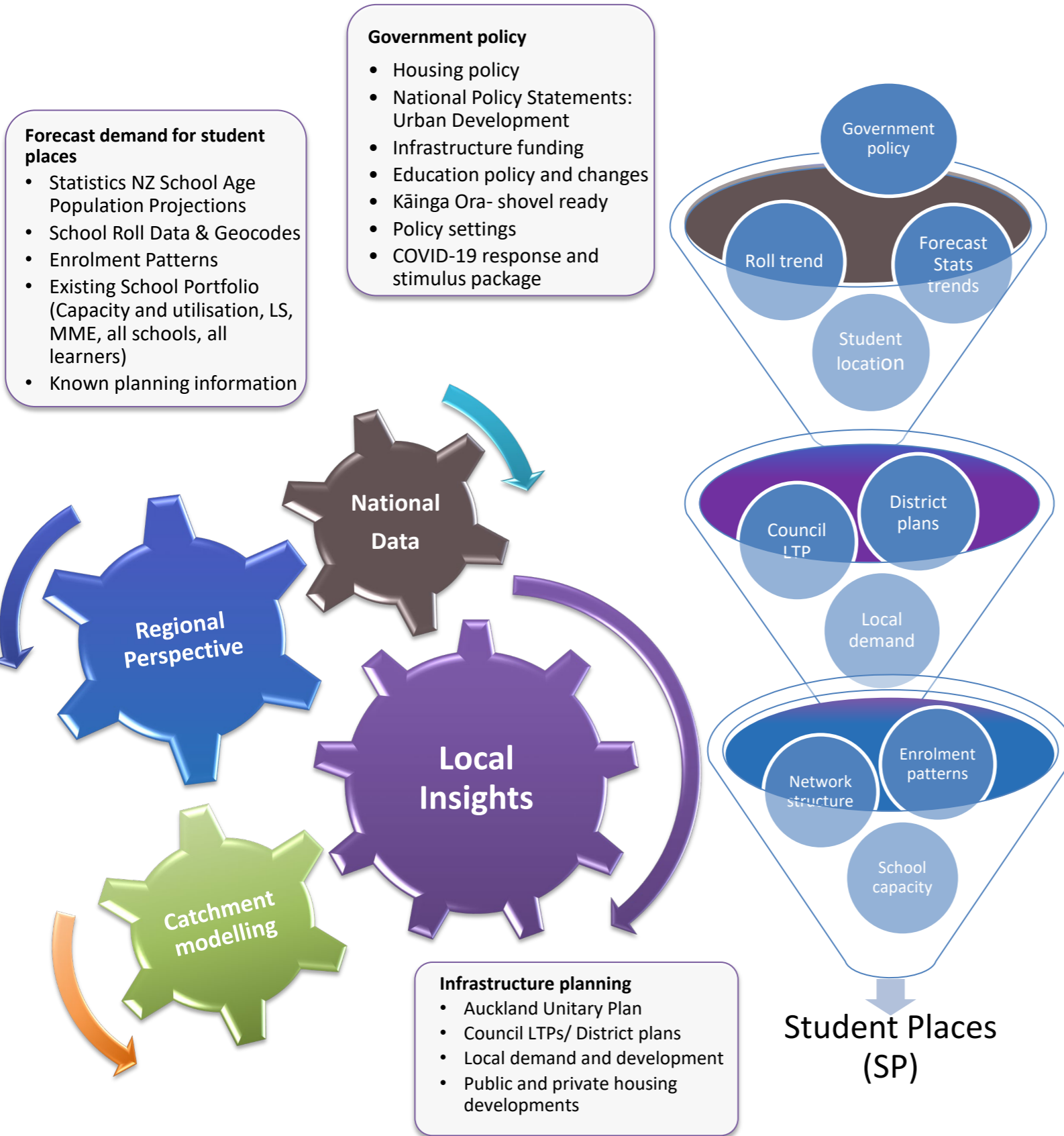


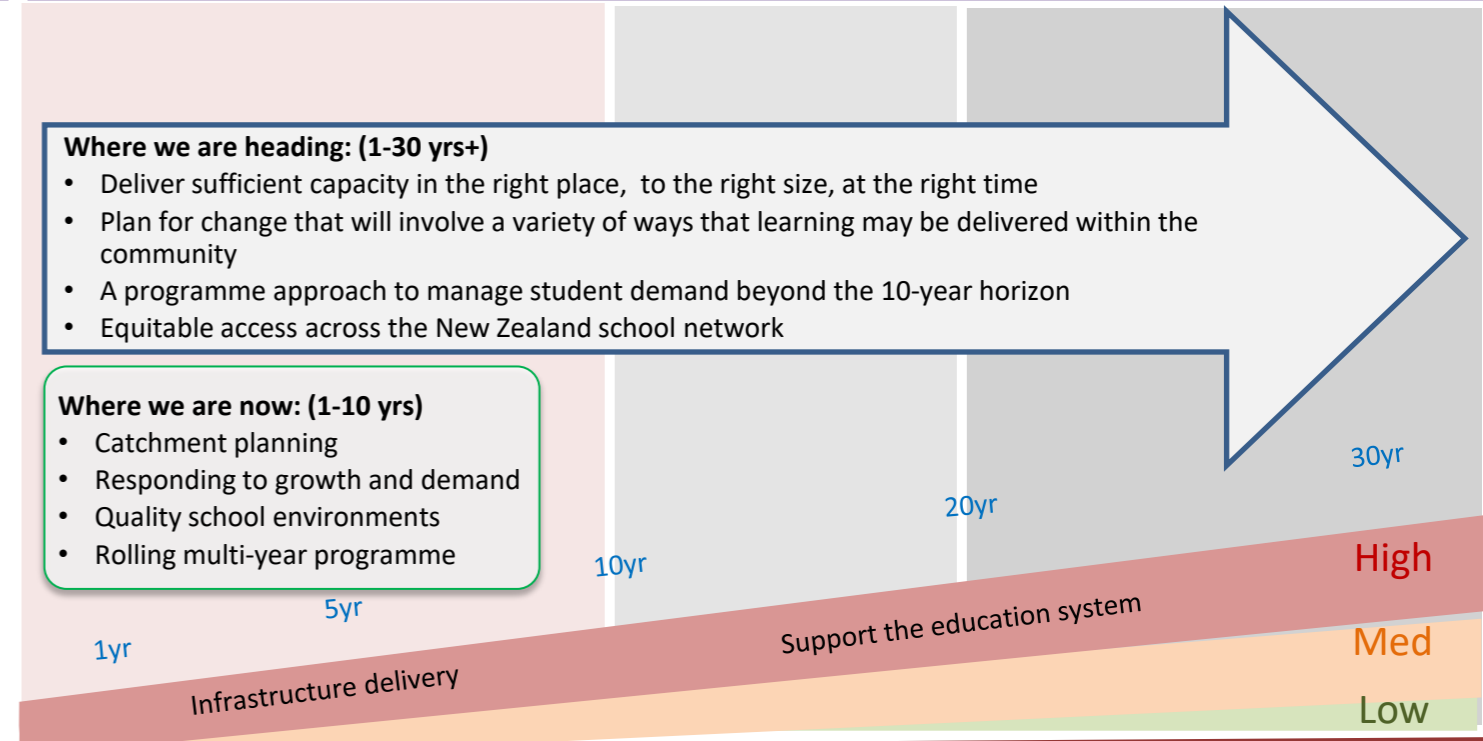
# National Education Planning Framework

## Methodology: Catchment Forecasting & Planning, and a 30 Year Programme Approach





### Comprehensive, multi-layered forecasting demand for student places



### Improving the schooling network & children and young peoples' wellbeing



### Responding to the demand for student places

Response	Key levers	Timeframe for Network Impact		
		1yr	5yr	10yr
	Enrolment zones	<b>Enrolment schemes</b> <ul style="list-style-type: none"> <li>• Major, phased programme in Auckland</li> <li>• Enrolment schemes and amendments across the regions</li> <li>• Manage down out of zone enrolments</li> </ul>		
	Network response	<b>Change network</b> <ul style="list-style-type: none"> <li>• Merge, relocate schools</li> <li>• Change school age range</li> <li>• Redirect students to other schools with available SP</li> </ul>		
	Expand provision	<b>Add space</b> <ul style="list-style-type: none"> <li>• Expansions, new classrooms, short term or permanent</li> <li>• School redevelopments, often includes roll growth</li> <li>• Transitions, pathways &amp; priority learners; e.g. MME and LS</li> </ul>		
	Land and new schools	<b>Land acquisition and build</b> <ul style="list-style-type: none"> <li>• Land acquisition strategy and new schools programme</li> </ul>		

### Ongoing monitoring and review to respond to demand

### Support the delivery of education and wellbeing outcomes for students