

Ngā panoni mō TMoA me te NCEA

RĀRANGI WĀ (2021-2025)

TE MARAUTANGA O AOTEAROA (TMOA)

A Hoahoa pūtake Māori

B Whakamātauranga

C Whakatinanatanga

D Whakapuakitanga

NCEA

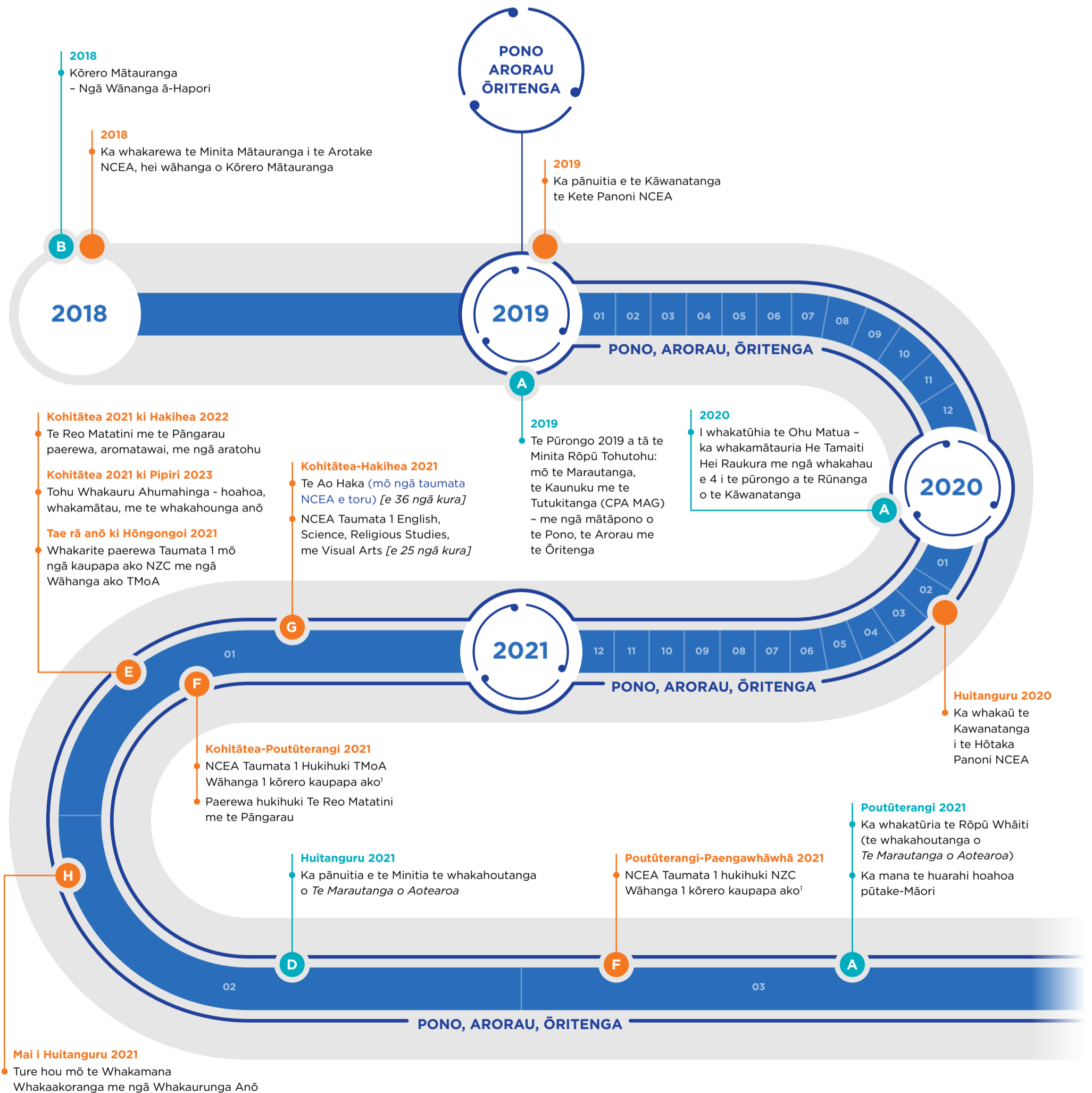
E Hoahoa

F Whaitanga tūmatanui

G Whakatauranga

H Whakatinanatanga

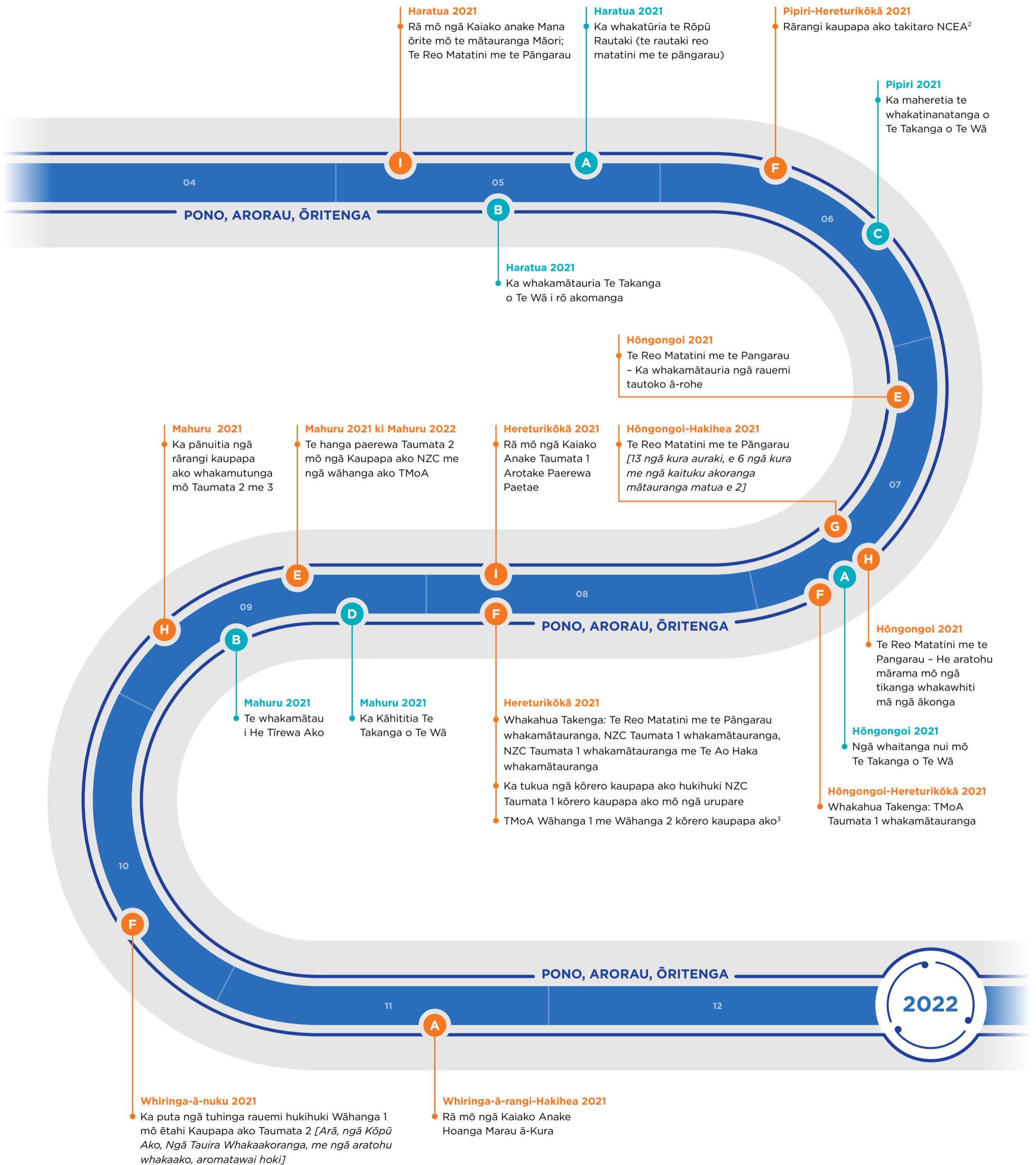
I Ngā rā mō ngā kaiako anake



¹ Kei tēnei wāhanga ko ngā Kōpū Ako, ngā aratohu ako, aromatawai hoki, ngā taura Whakaakoranga, me ngā Kōpū Aromatawai (me taitara paerewa waitohu).

- TE MARAUTANGA O AOTEAROA (TMoA)
- A Hoahoa pūtake Māori
- B Whakamātauranga
- C Whakatinanatanga
- D Whakapuakitanga

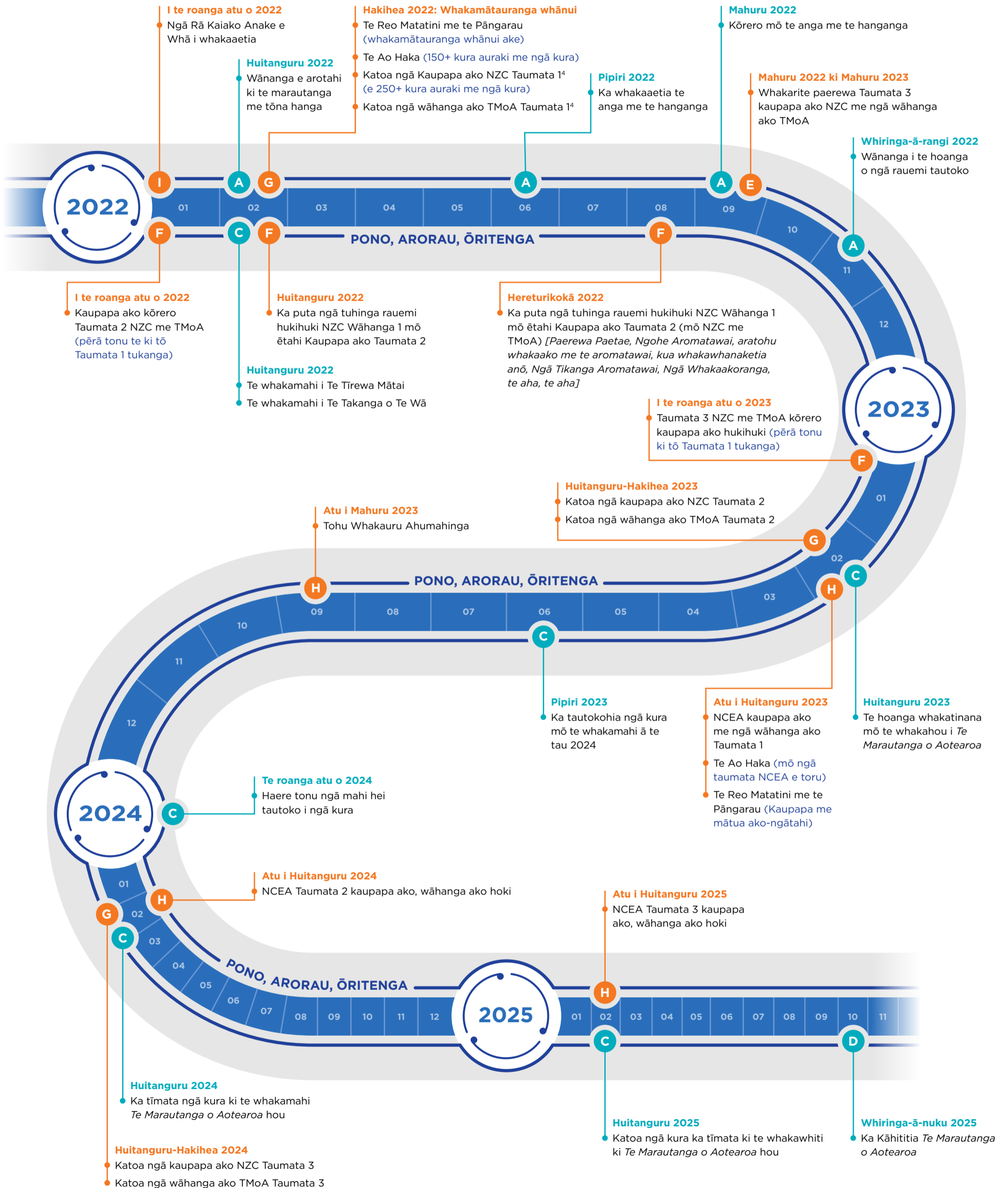
- NCEA
- E Hoahoa
- F Whaitanga tūmatanui
- G Whakatauranga
- H Whakatinanatanga
- I Ngā rā mō ngā kaiako anake



² Whaitanga tūmatanui mō ngā rārangi kaupapa ako takitaro mō Taumata 2 me 3 NZC me Taumata 1-3 TMoA.
³ Ka whāiti mai ngā Paerewa Paetae, Ngohe Aromatawai ā-roto, Tikanga Aromatawai, me ngā rauemi hou Wāhanga 1.

- TE MARAUTANGA O AOTEAROA (TMoA)
- A Hoahoa pūtake Māori
- B Whakamātauranga
- C Whakatinanatanga
- D Whakapuakitanga

- NCEA
- E Hoahoa
- F Whaitanga tūmatanui
- G Whakatauranga
- H Whakatinanatanga
- I Ngā rā mō ngā kaiako anake



4 Wāhanga 1 me 2 ka whakahoutia anō ngā kōrero kaupapa ako i muri i te whakamātauranga.