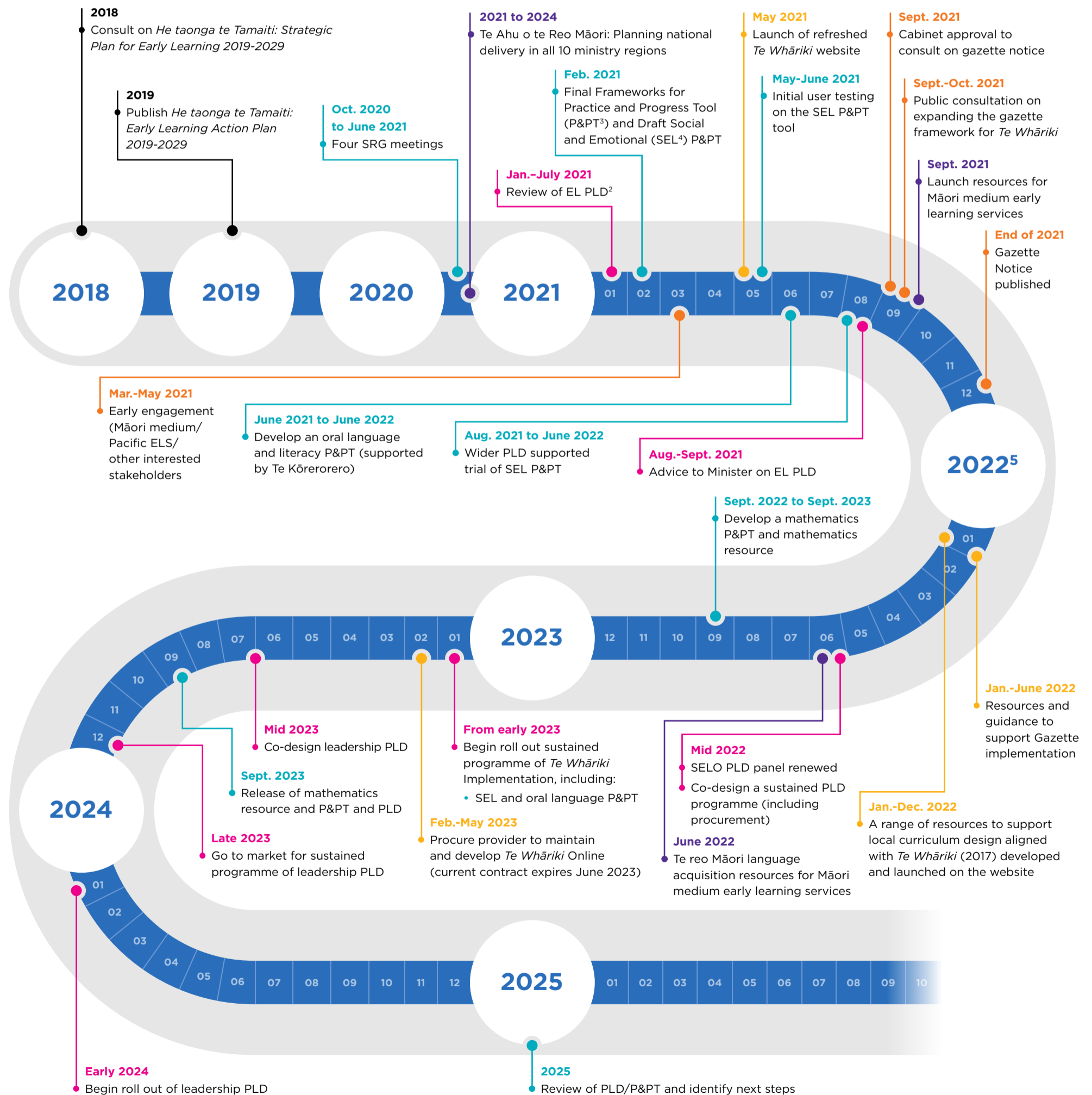


Supporting the implementation of *Te Whāriki*¹

INDICATIVE TIMELINE (2021-2025)

- Gazette the curriculum framework, *Te Whāriki*, to support engagement with the principles, strands, goals and learning outcomes when designing local curricula
- Develop a sustained and planned approach to professional learning and development
- Support the workforce to integrate te reo Māori into all early learning services
- Construct a range of valid, reliable, culturally appropriate tools to support formative assessment and teaching practice
- Tools and resources to support the implementation of *Te Whāriki*



1 Work programme in response to *He taonga te tamaiti - Every child a taonga, early learning action plan 2019-2029*
 2 EL PLD = Early Learning Professional Learning and Development
 3 P&PT = Practice and Progress Tools (Kōwhiri Whakapae)

4 SEL = Social and Emotional Learning
 5 Please note the following projections are tentative subject to approvals including budgetary decisions