

Briefing Note: Life Education Trust – Wellington School Leaders Event, Monday 19 June 2023

To:	Hon Jan Tinetti, Minister of Education		
Date:	12 June 2023	Priority:	Low
Security Level:	In Confidence	METIS No:	1311600
Drafter:	Carolyn Grace	DDI:	9(2)(a)
Key Contact:	Roy Sye	DDI:	
Messaging seen by Communications team:	Yes	Round Robin:	No

Purpose of Report

1. The purpose of this paper is to provide information to support your address at the Wellington School Leaders Event hosted by Life Education Limited on Monday 19 June 2023 from 11:35am to 11:55am.
2. You have been invited as a keynote speaker to provide an update to Wellington Primary and Intermediate School Leaders on the curriculum refresh and opportunities for schools, the projected reduction of Wellington school rolls and your desired education outcomes looking ahead. The runsheet and invitation from Life Education Trust Limited is provided as Annex 1.
3. Roy Sye, Director of Education for Wellington, will accompany you on the day.

Summary

4. The event organisers indicated to the Ministry that the focus of the day would be Neurodiversity and social media strategies and trends in schools. They expect that between 40-50 school leaders and/or their delegates will be present at the event. A list of all invited schools is provided for you as Annex 2.
5. The organisers have suggested your address could be an information sharing opportunity, particularly around any specific policies that may be released prior to the general election. Talking points are included as Annex 3.

Proactive Release

6. **agree** that the Ministry of Education release this briefing in full once the event has taken place.



Nancy Bell
Hautū | Deputy Secretary | Te Mahau
Te Tai Runga (South)

12/6/23



Hon Jan Tinetti
Minister of Education

19/06/2023

Agree / Disagree

Background

1. Life Education Trust Limited (LETL) is a non-Government organisation that delivers programmes of learning (Health and Wellbeing) that are aligned with the New Zealand Curriculum, to both students and teachers. They provide interactive learning experiences for students and teachers mainly from their mobile classrooms and webinars.
2. LETL has national coverage with trained educators in every region of the country who tailor programme of learning and resources to meet individual schools' needs. 80% of all schools participate in their programmes of learning.
3. Programmes of learning include Healthy Harold (delivered to 250,000 learners), Smashed (delivered to 20,000 year 9 learners), Smarts (delivered to 10,000 year 10 learners) and Behind the Scenes (delivered to 13,000 learners).
4. The main sponsors of LETL are Mainfreight, The Warehouse, Pub Charities, The Lion Foundation and the Aotearoa Gaming Trust.

Key Risks and Benefits

5. Feedback from the schools who attend LETL events is mostly positive. Some schools do not like that funding for LETL comes from Pub Charities, the Aotea Gaming Trust and the Lion Foundation.
6. The original consultation with LETL indicated that neurodiversity, social media strategies and trends in schools would be the focus of the event.
7. We anticipate there may be questions around roll decline in Wellington Schools and potentially access to learning support. The Secretary for Education met with executive members from the Wellington Region Primary Principals Association on 9 June 2023. The back pocket notes prepared for this meeting has been included for your information as Annex 4 to assist if the same questions are raised.

Annexes

The following are annexed to this paper:

- Annex 1: Runsheet and Invitation
- Annex 2: List of primary and Intermediate schools in the Wellington region
- Annex 3: Talking Points
- Annex 4: Back pocket notes from WRPPA Principals meeting 9 June 2023.

Appendix 1: Runsheet and Invitation



Run Sheet - Monday 19 June 2023

Venue: Te Puni Room, Wharewaka Function Centre

Participants:

Wellington Primary and Intermediate school leaders – target 50

Marketing:

Initial diary note – April

- o Direct comms to schools created by LET NZ – sent via local Educators
- o Direct Comms to schools created for Principals Assn – distributed by Fraser

Repeated – May & June

Run sheet:

9.30am pack in etc

10.15am tea / coffee on arrival

10.30am Welcome

Scene set LET NZ initiatives [John / Tracey]

10.45am

Kathryn Burkett – Neurodiversity (Engage training)

This word – neurodiversity – has become common language in our education system. We have significantly increased numbers of students who have a diagnosis, and many who have multiple diagnoses. This can create a daunting and challenging situation for educators, especially when we have a classroom where we have a number of neurodiverse learners. How can school leaders support teachers with the skills to navigate the increasingly complex classroom.

11.15am

Anjie Webster - digital wellbeing (Generations Online)

Negative online experiences for tamariki impacts how they feel about themselves, their friendships and relationships and even how they see the wider world. Interaction online but offsite spills over to the school environment for teachers to manage. What support is available in this area where new trends are constantly emerging

11.35am

Introduce Hon Jan Tinetti, Minister of Education (John)

Minister speaks 7-8 minutes

11.45am

Q and A of the Minister

11.55am

Conclude and acknowledgements - John

12.00pm Light lunch, networking

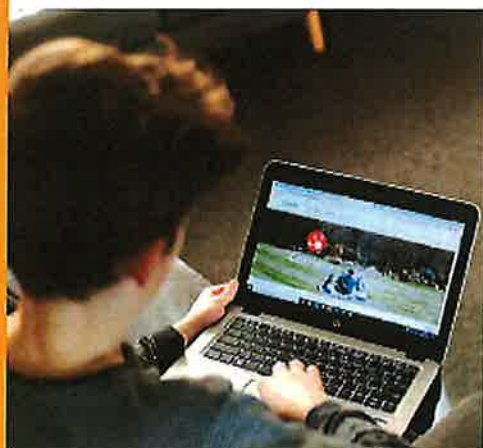
12.45pm Visitors departed and pack down

DRAFT – as at 19 April 2023



An invitation to attend
**Wellington School
Leaders Event**

Join Life Education Trust and school leaders from across the region to hear wellbeing experts discuss common issues in classrooms today, skill development opportunities for teachers and the Minister of Education's goals for our education system.



Monday 19 June
10.15am - 12.30pm followed by light lunch

Te Puni Room, Te Wharewaka o Pōneke
Wellington waterfront

RSVP by 1 June to:
rsvp@lifeeducation.org.nz

Hon. Jan Tinetti, Minister of Education

Jan Tinetti was appointed as the Minister of Education in February this year. The Minister will provide an update on the curriculum refresh and opportunities for schools, the projected reduction of Wellington school rolls and the desired education outcomes the Minister would like to see as we look ahead.

Kathryn Berkett, Engage Training, on Neurodiversity

The word neurodiversity has become common in our education system and an increasing number of learners are being diagnosed with associated conditions. How can school leaders support teachers with the skills to navigate the increasingly complex classroom?

Anjie Webster, Generation Online, on Digital Wellbeing

How tamariki engage online and what they experience impacts on how they feel about themselves, their relationships and even how they see the wider world. What support is available in this area where new trends and technologies are constantly emerging?

Appendix 2: List of primary and Intermediate schools in the Wellington region

1. A list of Primary and Intermediate Schools for Wellington Region is provided below. There are 211 Primary, 15 Intermediate and 3 Private Schools that invitations would have been sent out to.

School Type:
* Contributing - Yr 0-6
* Full Primary - Yr 0-8
* Composite - Yr 7-13 / Y1-Y13

Primary Schools:

2. The Primary Schools are affiliated with the Wellington Primary Principals Association (WRPPA).
3. Nigel Frater, Plateau School, is the current WRPPA President. Martin Hett, Raumati South School, is the current WRPPA Vice President. The group last met on Thursday 8 June 2023. Their term 3 meeting is set for 9 August 2023.

ID	School	Principal	City/Town	Type
1195	Adventure School	Tania Cox	Porirua	Full Primary
2801	Alfredton School	Alison Hill	Eketahuna	Full Primary
614	Amesbury School	Ursula Cunningham	Wellington	Contributing
2802	Arakura School	Seletute Mila	Wainuiomata	Contributing
2803	Avalon School	Dirk Winnie	Lower Hutt	Contributing
2805	Ballance School	Brenda Sutton	Pahiatua	Full Primary
2806	Bellevue School	Annette Borgonje	Wellington	Contributing
2807	Belmont School	Bryan Trevean	Lower Hutt	Contributing
2808	Berhampore School	Simonne Goodhall	Wellington	Contributing
2810	Birchville School	Robyn Brown	Upper Hutt	Contributing
2813	Boulcott School	Rachael Sole	Lower Hutt	Contributing
2816	Brooklyn School	Liz Rhodes	Wellington	Full Primary

2818	Cannons Creek School	Katrina Day	Porirua	Contributing
2819	Cardinal McKeefry School	Peter Hijazeen	Wellington	Full Primary
2820	Carterton School	Matt Jackett	Carterton	Full Primary
2821	Cashmere Avenue School	Adelle Broadmore	Wellington	Contributing
1630	Central Regional Health School	Jason White	Wellington	Special
2824	Churton Park School	Matthew Stanley	Wellington	Contributing
2826	Clifton Terrace Model School	Jenny Austin	Wellington	Full Primary
2827	Clyde Quay School	Liz Patara-Edwards	Wellington	Full Primary
2352	Coley Street School	Peter Kemp	Foxton	Full Primary
2828	Corinna School	Trish Nash	Porirua East	Full Primary
2823	Crofton Downs Primary School	Justin Potter	Wellington	Contributing
2831	Dalefield School	Eric Daubé	Carterton	Full Primary
2553	Dannevirke South School	Caroline Transom	Dannevirke	Full Primary
2832	Discovery School	Kaylene Macnee	Porirua	Full Primary
1661	Douglas Park School	Gareth Sinton	Masterton	Contributing
2833	Dyer Street School	Lee Ewington	Lower Hutt	Contributing
2834	Eastern Hutt School	Julie Henderson	Lower Hutt	Contributing
2835	Eketahuna School	Melinda Cowe	Eketahuna	Full Primary
2836	Epuni School	Janet Evans	Lower Hutt	Contributing
2838	Fairfield School	Alasdair Maclean	Levin	Full Primary
2840	Featherston School	Gina Smith	Featherston	Full Primary
2842	Fernlea School	Tony Field	Wainuiomata	Contributing
2843	Fernridge School	Janine Devenport	Masterton	Contributing
2358	Foxton Beach School	Katy Morreseey	Foxton Beach	Full Primary
2359	Foxton School	James Los'e	Foxton	Full Primary
2844	Fraser Crescent School	John Channer	Upper Hutt	Contributing
2845	Gladstone School	Mrs Belinda Bunny	Masterton	Full Primary
2847	Glenview School	Lynda Knight-de Blois	Porirua	Contributing
2848	Gracefield School	Natalie Schrijer (Acting)	Lower Hutt	Contributing
2849	Greenacres School	Mike Thomas	Tawa	Contributing
2850	Greytown School	Paula Weston	Greytown	Full Primary
4104	Hadlow Preparatory School	Andrew Osmond	Masterton	Full Primary

2852	Hampton Hill School	Claire Hughes	Tawa	Contributing
2854	Hataitai School	Jacinta Simpson	Wellington	Full Primary
2904	Holy Cross School (Miramar)	Lyn Hough (Acting)	Wellington	Full Primary
2859	Holy Family School	Sue Goodin	Porirua	Contributing
2861	Houghton Valley School	Luana Carroll	Wellington	Contributing
1662	Huia Range School	Robyn Forsyth	Dannevirke	Full Primary
2862	Hutt Central School	Michael Gendall	Lower Hutt	Contributing
2865	Island Bay School	Deborah Fenton	Wellington	Contributing
2866	Johnsonville School	Tania Cohen	Johnsonville	Contributing
660	Kahurangi School	Kyran Smith	Wellington	Full Primary
2868	Kahutara School	Katrina Hampton	Featherston	Full Primary
2871	Kapakapanui School	Craig Vidulich	Waikanae	Full Primary
2873	Kapiti School	Brent McDowell	Paraparaumu	Full Primary
2874	Karori Normal School	Conrad Kelly	Wellington	Full Primary
2875	Karori West Normal	Simon Flockton	Wellington	Full Primary
2876	Kelburn Normal School	Andrew Bird	Wellington	Full Primary
2877	Kelson School	Judy Pemberton	Lower Hutt	Contributing
2878	Kenakena School	Bruce McDonald	Paraparaumu Beach	Full Primary
2879	Khandallah School	Marian Meehan	Wellington	Contributing
2880	Kilbirnie School	Tony Austin	Wellington	Contributing
514	Kimi Ora School	Shirley Jones	Lower Hutt	Special
1647	Konini School (Wainuiomata)	Andrea Scanlan	Wainuiomata	Contributing
2882	Koputaroa School	Danielle Bence	Levin	Full Primary
2100	Koraunui School	Dave Lamont	Stokes Valley	Contributing
2883	Korokoro School	Martin Hookham	Petone	Full Primary
601	Kumeroa School	Sarah Hearn	Woodville	Full Primary
1659	Lakeview School	Tim Nelson	Masterton	Full Primary
2886	Levin East School	Sarah McCord	Levin	Contributing
2888	Levin North School	Moirra Howard-Campbell	Levin	Contributing
2889	Levin School	Paulianne Taylor	Levin	Contributing
2890	Linden School	Gaylene Hill	Tawa	Contributing
2892	Lyall Bay School	Melanie Dean	Wellington	Contributing

2872	Mahinawa Specialist School & Resource Centre	Sue McLean	Porirua	Special
2894	Makara Model School	Caroline Wills	Wellington	Full Primary
2895	Makuri School	Murray Grimmer	Pahiatua	Full Primary
2896	Manakau School	Deborah Logan	Levin	Full Primary
2899	Mangaroa School	John Steere	Upper Hutt	Contributing
2900	Mangatainoka School	Jason Edwards	Pahiatua	Full Primary
2903	Maraeroa School	Michelle Pilcher	Porirua East	Contributing
1179	Maranatha Christian School	Steve Farrand	Lower Hutt	Full Primary
2906	Martinborough School	Craig Nelson	Martinborough	Full Primary
1660	Masterton Primary School	Gene Bartlett	Masterton	Contributing
2968	Maungaraki School	Shane Robinson	Lower Hutt	Full Primary
2911	Mauriceville School	Kim Lupo	Masterton	Full Primary
2915	Miramar Central School	Jackie Sutherland	Wellington	Contributing
4119	Miramar Christian School	Kaye Gillies	Wellington	Full Primary
2916	Miramar North School	Joyce Adam	Wellington	Contributing
2918	Mt Cook School	Adrienne McAllister	Wellington	Full Primary
2920	Muritai School	Stu Devenport	Eastbourne	Full Primary
2922	Naenae School	Murray Bootten	Lower Hutt	Contributing
2923	Natone Park School	Daryl Aim	Porirua	Contributing
2925	Newlands School	Shirley Porteous	Wellington	Contributing
2926	Newtown School	Nicki Read	Wellington	Contributing
2927	Ngaio School	Raewyn Watson	Wellington	Contributing
2928	Ngati Toa School	Kathleen O'Hare	Porirua	Contributing
2930	Normandale School	Matt Burt	Lower Hutt	Contributing
2622	Norsewood School	Angela McQuarrie	Norsewood	Full Primary
2931	Northland School	Andrea Peetz	Wellington	Full Primary
2933	Ohau School	Dianne McKee	Levin	Full Primary
2936	Opaki School	Nikki Irwin (Acting)	Masterton	Full Primary
2939	Otaki School	Rauru Walker	Otaki	Contributing
3073	Otari School	Clifford Wicks	Wellington	Full Primary
3017	Our Lady of Kapiti School	Viv Conroy	Paraparaumu	Full Primary

2941	Our Lady of the Rosary School	Karolina Surynt-Tapiki	Lower Hutt	Full Primary
2942	Owhiro Bay School	Cilla Scott	Wellington	Contributing
2943	Oxford Crescent School	Nathan Russell	Upper Hutt	Contributing
2944	Paekakariki School	Julia Bevin	Paekakariki	Full Primary
2945	Pahiatua School	David Jackson	Pahiatua	Full Primary
2946	Papakowhai School	Mark Smith	Porirua	Full Primary
2947	Paparangi School	Tracey Arthurs	Wellington	Contributing
2640	Papatawa School	Wynita Katene	Woodville	Full Primary
2948	Paraparaumu Beach School	Jessica Ward	Paraparaumu Beach	Full Primary
2949	Paraparaumu School	Steve Caldwell	Paraparaumu Beach	Full Primary
2950	Paremata School	Bryce Coleman	Porirua	Full Primary
2953	Pauatahanui School	Caine Webster	Porirua	Full Primary
2955	Petone Central School	Trina Bennett	Petone	Full Primary
2957	Pinehaven School	Phillipa Whiteman	Upper Hutt	Contributing
2958	Pirinoa School	Richard Goodyear	Featherston	Full Primary
2959	Plateau School	Nigel Frater	Upper Hutt	Contributing
2960	Plimmerton School	Chris Steffensen	Plimmerton	Full Primary
2961	Pomare School	Sherilyn Hall	Lower Hutt	Contributing
528	Ponatahi Christian	Peter Bertram	Carterton	Composite (Y1-13)
2962	Pongaroa School	Jo Mahoney	Pongaroa	Full Primary
2963	Porirua East School	Juliette Toma	Porirua East	Contributing
2964	Porirua School	Vanessa Hendry	Porirua	Contributing
2965	Poroutawhao School	Nikki Harland	Levin	Full Primary
2966	Postgate School	Adam Campbell	Porirua	Full Primary
2846	Pukeatua Primary School	Topsy Remuera	Wainuiomata	Full Primary
2967	Pukerua Bay School	Chris Els	Pukerua Bay	Full Primary
2969	Randwick School	Andrew Wooster (Acting)	Lower Hutt	Full Primary
2970	Rangikura School	Eddie Uluilelata	Porirua East	Full Primary
133	Raphael House Rudolf Steiner School	Karyn Gray	Lower Hutt	Composite (Y1-13)
2973	Rata Street School	Hamish Regan	Lower Hutt	Contributing
2974	Raumati Beach School	Mike Farrelly	Raumati Beach	Full Primary
2975	Raumati South School	Martin Hett	Raumati Beach	Full Primary

2976	Redwood School	Zac Mills	Tawa	Contributing
2979	Rewa Rewa School	Jan Otene	Wellington	Contributing
2980	Ridgway School	Kathryn Smith	Wellington	Full Primary
2982	Roseneath School	Jenny Foote (Acting)	Wellington	Full Primary
2669	Ruahine School	Kate Greer	Dannevirke	Full Primary
2983	Russell School	Anna Borrer (Acting)	Porirua	Contributing
2985	Sacred Heart Cathedral (Thorndon)	Bernadette Murfitt	Wellington	Full Primary
2984	Sacred Heart School (Petone)	Liz Heatley	Petone	Full Primary
2987	Seatoun School	John Western	Wellington	Full Primary
2989	Shannon School	Nick Julian	Horowhenua	Full Primary
2990	Silverstream School	Lorraine Taylor	Upper Hutt	Contributing
2991	Solway School	Mark Bridges	Masterton	Contributing
2992	South End School	Clare Crawford	Carterton	Full Primary
2993	South Featherston School	Tana Klaricich	Featherston	Full Primary
2997	St Anne's School (Newtown)	Matthew Kolic	Wellington	Full Primary
2998	St Anthony's School (Pahiatua)	Margaret Hyslop	Pahiatua	Full Primary
2999	St Anthony's School (Seatoun)	Denise Johnson	Wellington	Full Primary
3000	St Benedict's School (Khandallah)	Tania Savage	Wellington	Full Primary
3001	St Bernadette's School (Naenae)	Jo Buckley	Lower Hutt	Full Primary
3002	St Bernard's School (Brooklyn)	Lisa Small	Wellington	Full Primary
3004	St Brendan's School (Heretaunga)	Veronica Sawers	Heretaunga	Full Primary
3005	St Brigid's School (Johnsonville)	Jennifer Ioannou	Johnsonville	Full Primary
3018	St Claudine Thevenet	Sue Jury	Wainuiomata	Full Primary
3006	St Francis de Sales School	Mary-Angela Tombs	Wellington	Full Primary
3007	St Francis Xavier School (Tawa)	Joan Woods	Tawa	Contributing
2676	St Joseph's School (Dannevirke)	Megan Seatter	Dannevirke	Full Primary
3008	St Joseph's School (Levin)	Maria Lyne	Levin	Full Primary
3011	St Joseph's School (UH)	Andrew Herrick	Upper Hutt	Full Primary
3013	St Mary's School (Carterton)	Karen Goodall	Carterton	Full Primary
2455	St Mary's School (Foxton)	Phil Gunn	Manawatu	Full Primary
3015	St Michael's School (Taita)	Clara Tuifao	Lower Hutt	Full Primary
3019	St Patrick's School (Kilbirnie)	Tony Kelly-Smith	Wellington	Contributing
3016	St Patrick's School (Masterton)	Steve Wheeler	Masterton	Contributing

3020	St Peter Chanel School (Otaki)	Urutakai Cooper	Otaki	Full Primary
3022	St Pius X School (Titahi Bay)	Nenah Kelemete	Titahi Bay	Contributing
3023	St Teresa's School (Featherston)	Lindsey Dailly	Featherston	Full Primary
3024	St Teresa's School (Karori)	Pip Cook	Wellington	Full Primary
3025	St Theresa's School (Plimmerton)	Donna-Maree McDonald	Plimmerton	Contributing
3021	Sts Peter & Paul School	Kay Tester	Lower Hutt	Full Primary
3029	Tairangi School	Jason Ataera	Porirua East	Full Primary
3030	Taita Central School	Michelle Picard	Lower Hutt	Contributing
3032	Taitoko School	Rachel King	Levin	Full Primary
3035	Tawa School	Barri Dullabh	Tawa	Full Primary
3036	Tawhai School	Karen Poole	Stokes Valley	Contributing
3037	Te Aro School	Sue Clement	Wellington	Full Primary
3038	Te Horo School	Allie McHugo	Otaki	Full Primary
2902	Te Kura o Hau Karetu	Karen Wellington	Upper Hutt	Contributing
1613	Te Rā School	Kerstin Wagner	Raumati South	Full Primary
3040	Thorndon School	Aroha Hohepa	Wellington	Full Primary
3041	Tinui School	Simon Cowling	Masterton	Full Primary
3044	Titahi Bay North School	Grant Henderson	Porirua	Full Primary
3045	Titahi Bay School	Matt Tilley	Porirua	Contributing
439	Totara College of Accelerated Learning	Dr Peter Ferrar	Dannevirke	Composite (Y1-13)
3048	Totara Park School	Joel Webby	Upper Hutt	Contributing
2099	Trentham School	Ms Cris Hull	Upper Hutt	Contributing
3051	Tui Glen School	Jessica Meates	Stokes Valley	Full Primary
3053	Upper Hutt School	Jo Grant	Upper Hutt	Contributing
1189	Wā Ora Montessori	Ava Szabo	Lower Hutt	Composite (Y1-13)
3055	Wadestown School	Amanda Frater	Wellington	Full Primary
3056	Waikanae School	Michelle Fearon	Waikanae	Full Primary
3059	Wainuiomata Primary School	Allison Burdon	Wainuiomata	Contributing
3060	Wainuioru School	Spencer Pallister	Masterton	Full Primary
3065	Waitohu School	Maine Curtis	Otaki	Contributing
3068	Waterloo School	Suzanne Su'a	Lower Hutt	Contributing
2732	Weber School	Lisa Anderson	Dannevirke	Full Primary

4150	Wellington S.D.A.	Karla Mitchell	Wellington	Full Primary
2867	West Park School	Luis Echegaray	Johnsonville	Contributing
3070	Whareama School	Nathan Hill	Masterton	Full Primary
3072	Wilford School	Neil Sargisson	Lower Hutt	Full Primary
3074	Windley School	Anau Kupa	Porirua East	Full Primary
2742	Woodville School	Wes Va'ai-Wells	Woodville	Full Primary
3077	Worser Bay School	Jude Pentecost	Wellington	Contributing

Total: 211 Primary Schools

Intermediate Schools:

4. The Intermediate Schools are affiliated with the Wellington Intermediate Schools Principals Association (WISPA).
5. WISPA have a rotating chair for 2023 with the next hosting Principal taking care of arrangements for their meetings each term. Their Term 3 meeting is set for 3 August 2023 with Howard Young from Evans Bay Intermediate hosting.

ID	School	Principal	City/Town	Type
3031	Avalon Intermediate	Ariana Te Whetu	Lower Hutt	Intermediate
2814	Brandon Intermediate	Paul McKendry	Porirua	Intermediate
2837	Evans Bay Intermediate	Howard Young	Wellington	Intermediate
2841	Fergusson Intermediate	Simon Kenny	Upper Hutt	Intermediate
2863	Hutt Intermediate School	Mike Gillatt	Lower Hutt	Intermediate
2887	Levin Intermediate School	Sheree Garton	Levin	Intermediate
2893	Maidstone Intermediate School	Wikus Swanepoel	Upper Hutt	Intermediate
2909	Masterton Intermediate School	Russell Thompson	Masterton	Intermediate
2921	Naenae Intermediate School	Sarah Pavihi	Lower Hutt	Intermediate
2924	Newlands Intermediate	Angela Lowe	Wellington	Intermediate
2972	Raroa Normal Intermediate	Stephen Eames	Johnsonville	Intermediate
2994	South Wellington Intermediate	Toby Stokes	Wellington	Intermediate
3034	Tawa Intermediate School	Prisca MacDonald	Tawa	Intermediate
3043	Titahi Bay Intermediate	Dairne Kaimoana	Porirua	Intermediate
1646	Wainuiomata Intermediate	Craig Sharp	Wainuiomata	Intermediate

Total: 15 Intermediate Schools

Private Schools:

ID	School	Principal	City/Town	Type
263	Chilton St James School	Kate Pollard	Lower Hutt	Private (Y1-Y13)
4134	St Mark's Church School	Kent Favel	Wellington	Private (Y1-Y8)
4149	Wellesley Independent School for Boys	Michael Bain	Lower Hutt	Private (Y1-Y8)

Total: 3 Private Schools

Appendix 3: Talking Points

Talking Points – to come

Appendix 4: Back pocket notes from WRPPA Principals meeting 9 June 2023

8. WRPPA Executive Members met with the Secretary of Education on 9 June 2023 and raised a series of questions for discussion.
9. We have included the back-pocket notes for your information should the same questions be raised with you.

Question Themes:

- Schools (particularly those in central Wellington) are experiencing roll decline and are concerned about the impact on collaboration as schools compete for students.
- Wait-times to receive support (wanting faster processes) / level of support received / access to other services (CAMHS / CDS)
- In class support through better training of Teacher Aides
- Support for students who do not meet the threshold for Ministry support
- Access to resources and equipment to meet increased demands
- Trauma and anxiety support

Back Pocket Notes:

High Level Wellington TLA Network Information:

- The utilisation of the Wellington City (TLA) schools are at 73%. Note that Hutt City schools are less than this at 55% and Porirua City is also at 73% utilisation rate.
- Over the last 5 years, approximately 70% of schools in Wellington City have experienced a decrease in enrolments. A number with significant declines one year to the next, which is difficult to project.
- The trend of decreasing enrolments has been since Covid 19 (since 2020). The fall in roll numbers are a result of reduced immigration, a general drop in birth rates and population growth, as well as housing affordability issues which has driven internal migration out of the City. All of the above have contributed to rapidly changing enrolment patterns.
- Care is taken to view population data cautiously as it subject to change.

Learning Support

- Te Mahau gives us an opportunity to work differently. In those areas that have Kāhui Ako or clusters this is an opportunity to embed **the Learning Support Delivery Model (LSDM)** determining the needs and finding ways to respond to those local needs.
 - LSDM allows us to work with schools to redefine what service looks like and shift to a more preventative and consultative model.
 - The model would bring together SENCO, LSC, RTLB and learning support to determine right service /right time.
 - Lead workers would meet regularly and provide problem solving and a **tiered response earlier**
 - Where there is no existing KA or cluster SENCO, RTLB and LS would still work together to address need.

- Our shared practice framework with RTLB – **He Pikorua** provides a framework that helps provide clear, consistent and practical guidance. It supports universal, systemic and individual responses based on the specific needs identified.
- **Wait times** continue to be a focus area. There is practice across Wellington region where LS and RTLB are working collaboratively to find ways to streamline requests for support to either service.
 - Our intention is to be flexible in our approach and the way we fund individual and systemic work.
- **Recruitment and retention** is an ongoing focus of our workforce planning to address current levels of vacant positions. We see the inclusion of Psychologists and Speech language Therapist to the priority occupations list as a positive move.
- **We are training school leaders** in Porirua, Kapiti and Wellington in Neurosequential Model in Education – Trauma informed practice. This is the second year we have supported this training which began in Porirua schools. We have expanded this to include Kāpiti and Wellington city. Our intention is to continue to expand capability across the Wellington region over time.
 - Two Te Mahau staff are undertaking advanced training which means they will be able to provide specific training to other practitioners, teachers, and principals.