

## Education Report: Consultation on the establishment of a proposed secondary school in Drury West, Auckland

<b>To:</b>	Hon Jan Tinetti, Associate Minister of Education (School Operations)		
<b>Cc:</b>	Hon Chris Hipkins, Minister of Education		
<b>Date:</b>	25 July 2022	<b>Priority:</b>	Medium
<b>Security Level:</b>	In Confidence	<b>METIS No:</b>	1284213
<b>Drafter:</b>	Ken White, Senior Advisor Network	<b>DDI:</b>	09 632 9470
<b>Key Contact:</b>	Janet Schofield, Manager Network	<b>DDI:</b>	09 632 9333
<b>Messaging seen by Communications team:</b>	No	<b>Round Robin:</b>	No

### Purpose of Report

This report requests your approval for consultation on the establishment of a proposed new secondary school located in Drury West, Auckland. Consultation is required under section 209 of the Education and Training Act 2020 (the Act) before a new school is established.

This report is supported by the Director of Education for Tāmaki Makaurau.

### Summary

- 1 Drury West is located in the Papakura-Rosehill-Drury catchment of the National Education Growth Plan (NEGP). Drury has been identified as an area for extensive future urban development in the Auckland Unitary Plan and is anticipated to have the highest green field growth of any sub-region in Auckland, with around half of that in Drury West.
- 2 Drury West could yield up to 11,200 dwellings, with the potential to bring an additional 2,500 secondary students to the school network.
- 3 To cater for the long-term projections in this catchment, the NEGP identified that additional capacity will be required across all year levels and, over time, the establishment of four to six additional primary schools and one or two secondary schools.

- 4 The Drury West area is currently zoned for Rosehill College, which is the only state secondary school accommodating students in this area.
- 5 If additional capacity is not provided by 2026 there is likely to be a deficit of over 950 student places in the secondary network. This is projected to rapidly increase to a deficit of over 2,500 by 2031.
- 6 An 8.5-hectare site has been purchased for the proposed school at 281 and 401 Jesmond Road, Drury, and an application to designate the land was lodged with Auckland Council in April 2021 (Annex 1). However, the process is on hold pending resolution of a right-of-way issue with the adjacent landowners. It is expected this will be resolved by the end of this year and designation confirmed.
- 7 It is proposed that the new secondary school would open in 2026 as a Year 9–13 co-educational state school. The build roll is proposed to be 800 student places, with a long-term master plan roll of 2,500 students.
- 8 Section 209 of the Education and Training Act 2020 requires that you consult with the boards of all state schools whose rolls might be affected by the establishment of a new school. If you agree to this proposal, the Ministry will complete sector consultation on your behalf, as well as consultation with iwi and other sector parties.
- 9 Once consultation is complete, a further education report will be provided detailing the feedback from the consultation process, for you to consider any issues before deciding whether to formally establish a new school under section 190 of the Act.

## Recommended Actions

---

The Ministry of Education recommends you:

- a. **note** that Drury West is an area of significant growth, with an additional 2,500 student places required in the secondary network by 2031;
- b. **note** that the Ministry has acquired and applied to designate a site for the proposed secondary school in Drury West;
- c. **note** that we are proposing that the new school be operational in 2026 to meet the forecast growth and demand in the area; and
- d. **agree** that the Ministry consult, on your behalf, with the boards of all state and state integrated schools whose rolls might be affected by the establishment of the proposed school, and with iwi and other affected parties.

Noted

Agree/Disagree

If you agree to consult, you are asked to:

- e. **note** that a further report will be provided to you containing the consultation feedback and seeking a decision on the establishment of the proposed schools; and

Noted

We also recommend that you:

- f. **agree** that this Education Report be proactively released in line with your expectations. Any information that might need to be withheld will be done so in line with the provisions of the Official Information Act 1982.

Release / Not release

  
Isabel Evans  
Hautū | Deputy Secretary  
Te Mahau | Te Tai Raro

25/07/2022

  
Hon Jan Tinetti  
Associate Minister of Education  
(School Operations)

06/08/2022

## Background

---

- 1 Drury West is part of the Papakura-Rosehill-Drury catchment of the National Education Growth Plan (NEGP). Drury has been identified as an area for extensive future urban development in the Auckland Unitary Plan and is anticipated to have the highest green field growth of any sub-region in Auckland, with around half of that in Drury West.
- 2 Drury West could yield up to 11,200 dwellings, supporting a population of 33,600, with the potential to bring an additional 2,500 secondary students into the school network.
- 3 Three private plan changes were notified by Auckland Council in August 2020, seeking to rezone Future Urban Zone land in Drury East. The plan changes have been approved (with modifications), with the decisions notified on 5 May 2022. Appeals to all the plan changes have been lodged. These plan changes will have a total yield of approximately 6,000 dwellings, adding around 1,250 Year 9–13 students to the Rosehill College network.
- 4 Drury West and Drury East are currently zoned for Rosehill College, which is the only state secondary school accommodating students in this area.
- 5 A new state secondary school in Drury West would take pressure off the roll of Rosehill College allowing the school to accommodate students from Drury East up until at least 2027.
- 6 A Drury West secondary school would also service Clarks Beach, Kingseat and Karaka North. These townships have a combined yield of 3,950 anticipated dwellings and the potential to generate an additional 820 Year 9–13 students between 2026-2030.

## Network Considerations

---

- 7 Three schools have served the main Drury area: Drury School (Year 1 - 8), Ramarama School (Year 1 - 8) and Rosehill College (Year 9 – 13). Another four rural schools offer provision for Year 1 – 8 students within the indicative proposed zone for the new secondary school: Karaka School, Te Hihi School, Ramarama School and Waiau Pa School.
- 8 Our first response to growth in Drury has been to establish and open a new primary school, Ngākōroa School, which opened in Term 1, 2022.
- 9 The proposed new secondary school is the first of two potential secondary schools planned for this schooling network.
- 10 The Drury West area is currently zoned for Rosehill College for secondary provision, with some rural areas also zoned for Waiuku College or Pukekohe High School. In March 2021, Rosehill College was at 90% capacity. Active development across Hingaia, Papakura and Drury East is also expected to increase demand for the school. We are increasing capacity at Rosehill College, but this alone will not be enough to meet the anticipated demand by 2031.
- 11 If additional capacity is not provided in the secondary network by 2026 there is likely to be a deficit of over 950 student places. This is projected to rapidly increase to a deficit of over 2,500 by 2031.

- 12 In 2024, St Ignatius of Loyola Catholic College will open as a new state integrated Roman Catholic secondary school in Drury. The initial maximum roll will be 340 students, growing to a maximum of 900 students over four or more years. The school will initially open for Year 7–9 students and then grow progressively until 2028 when it will provide the full range of Year 7-13 classes. Currently there is no Catholic secondary provision in this area of South Auckland.
- 13 We have also received a request from the proprietor of Kingsgate School, the New Zealand Christian Proprietors Trust, to change its classification to include Year 9-13. Kingsgate School is located in neighbouring Pukekohe, but it is not expected that the proposed change would have an impact on state demand for secondary education in the Drury catchment.

### The proposed Drury West Secondary school

---

- 14 The Drury catchment supports a network of contributing primary schools (Year 1- 6), full primary schools (Year 1- 8) and intermediate schools (Year 7- 8). It is proposed that the new school opens as a Year 9 - 13 school to maintain a consistent pathway across the catchment for secondary school provision.
- 15 The proposed opening date for the school is Term 1, 2026. It is proposed that the build roll of the new school will be 800 student places with a potential long-term master plan roll of 2,500 student places.
- 16 In addition, the site will include early childhood education and specialist education provision.

### *Learning Support*

- 17 It is proposed that the school will include satellite provision for the Blind and Low Vision Education Network NZ (BLENNZ) with two teaching spaces, and four teaching spaces for a satellite of Parkside Specialist School. This will ensure there is sufficient learning support provision as the area grows.

### Consultation Process

---

- 18 Before a new school can be established, section 209 of the Education and Training Act 2020 requires you to consult with the boards of all state and state integrated schools whose rolls might, in your opinion, be affected by the proposed establishment.
- 19 We have identified only one school whose rolls might be affected by the proposed establishment, Rosehill College, a Year 9-13 secondary school in Papakura.
- 20 We will also consult with the feeder primary schools and adjacent schools listed below (refer to Annex two for location map):

School	Year levels
Hingaia Peninsula School	Y 1-8
Mangapikopiko School (Park Estate)	Y 1-6
Opaheke School	Y 1-8

Drury School	Y 1-8
Ngākōroa School	Y 1-8
Te Hihi School	Y 1-8
Ramarama School	Y 1-8
Waiau Pa School	Y 1-8
Kereru Park Campus	Y 1-8
Rosehill Intermediate	Y 7-8
Papakura Intermediate	Y 7-8
Karaka School	Y 1-8
Papakura High School	Y 9-13
Alfriston College	Y 9-13
Waiuku College	Y 9-13
Pukekohe High School	Y 9-13
St Ignatius of Loyola Catholic School	Y 7-13

- 21 As part of this process, we would also consult with stakeholders, such as local iwi and hapū, to help form enduring relationships as the school is established.
- 22 Community and sector groups such as residents' associations, the New Zealand Educational Institute, Post Primary Teachers' Association, and the Auckland Secondary Principals' Association will also be consulted.
- 23 We anticipate consultation will be carried out over a six-to-eight-week period. This will allow time for iwi, sector groups, school boards, and community groups to discuss any issues before making a response. Some school boards might also consult with their school community.
- 24 Once the consultation has been completed, we will provide you with a report so you can consider the consultation feedback before deciding whether to establish the new school under section 190 of the Act.

## Property Implications

---

- 25 An 8.5-hectare site has been purchased for the proposed school at 281 and 401 Jesmond Road, Drury, and an application to designate the land was lodged with Auckland Council in April 2021 (Annex 1). However, the process is on hold pending resolution of a right-of-way issue with the adjacent landowners. It is expected this will be resolved by the end of this year and designation confirmed.

## Financial implications

---

- 26 Seed funding for the initial planning and design of the school will be sought in future budgets.
- 27 Financial projections will be provided in the next report regarding the establishment of the proposed school.

## Risks

---

- 28 If additional capacity is not provided, our projections indicate that the school network will have a large deficit of student spaces by 2031.

## Next steps

---

- 29 If you agree, we will consult with the boards of all schools whose rolls might be affected by the establishment of the school. We will also consult with sector bodies, local iwi and hapū, and community groups as appropriate.
- 30 Following consultation, we will prepare a final report with the feedback from the consultation for your consideration and ask for your decision on the establishment of the new school.

## Proactive Release

---

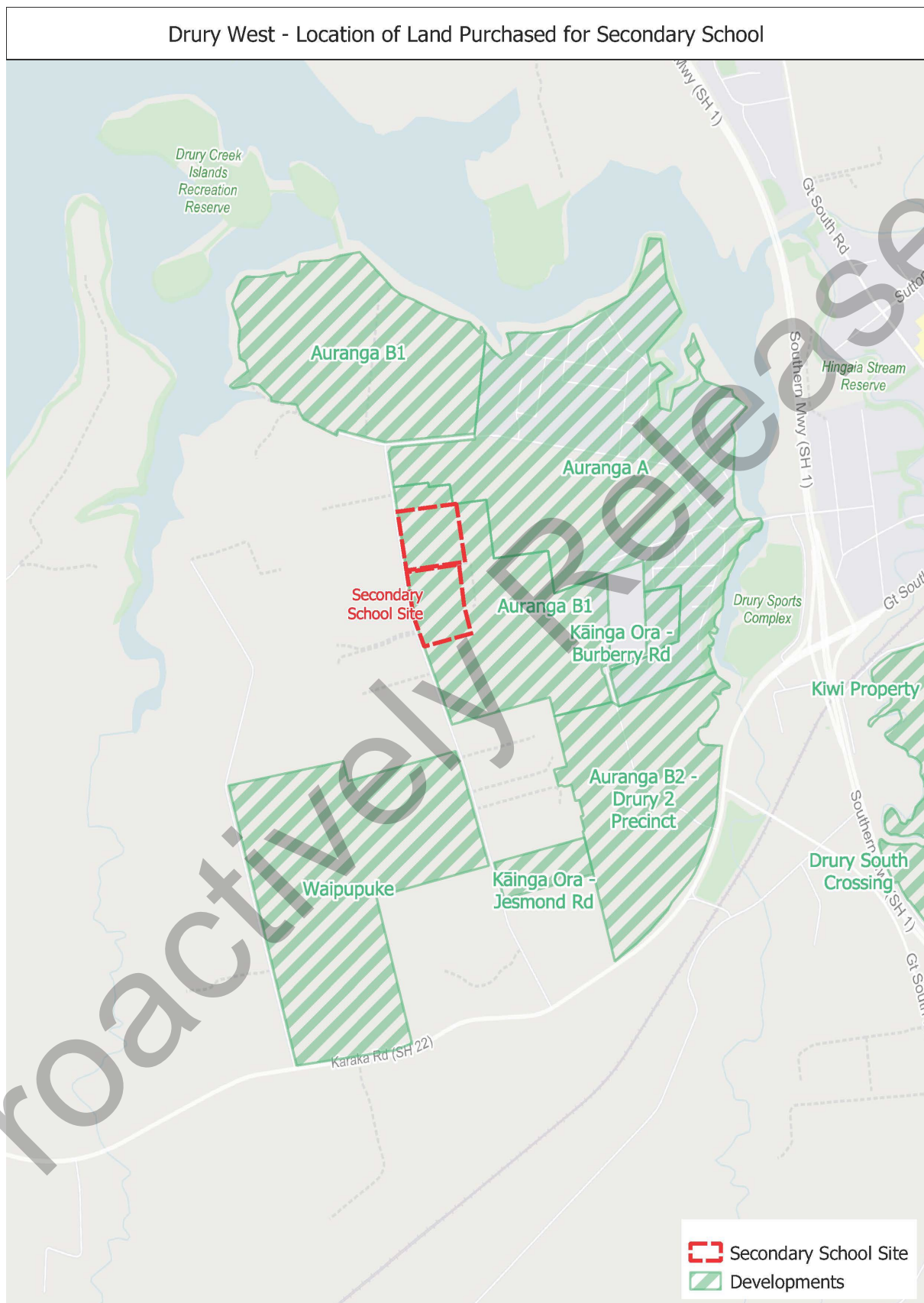
- 31 It is intended that this Education Report be proactively released. Any information that might need to be withheld will be done so in line with the provisions of the Official Information Act 1982.

## Annex

---

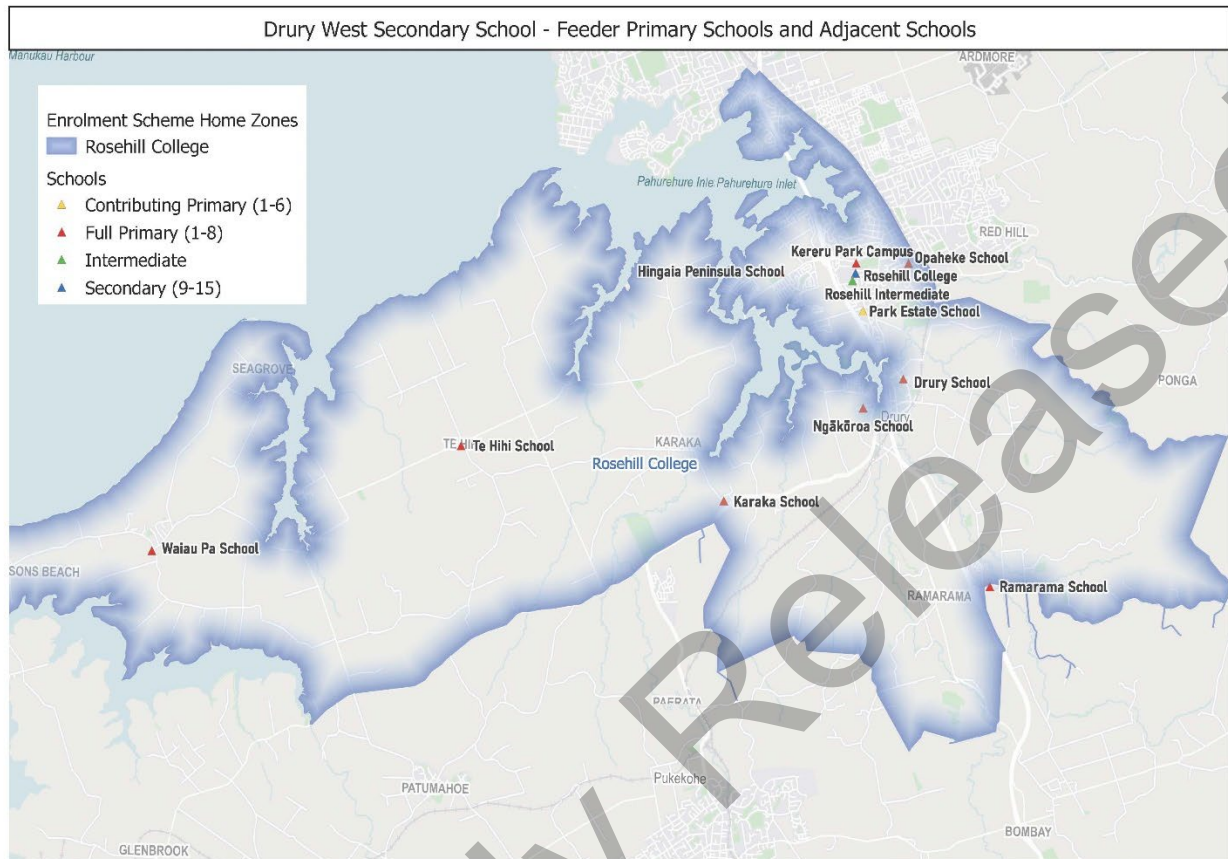
- Annex 1: Secondary school site location
- Annex 2: Map of network and feeder schools
- Annex 3: Letters to local Members of Parliament

## Annex 1: Secondary school site location





## Annex 2: Map of network and feeder schools



Proactively Released

## Hon Jan Tinetti

Minister of Internal Affairs  
Minister for Women  
Associate Minister of Education



Hon Kelvin Davis  
Member of Parliament for Te Tai Tokerau  
Parliament Buildings  
Wellington

Tēnā koe Kelvin

I am pleased to inform you that I am beginning consultation on the proposed establishment of a new secondary school (Year 9-13) on Jesmond Road, Drury West, Auckland.

Under section 209 of the Education and Training Act 2020, I am required to undertake consultation with the boards of all state schools whose rolls might be affected by the establishment before making a final decision on the proposal.

Once this consultation has been completed, I will consider a further report from the Ministry of Education containing all consultation feedback. I hope to then be in a position to make a decision on establishment of the school.

Nāku noa, nā

A handwritten signature in black ink, appearing to read 'J. Tinetti'.

Hon Jan Tinetti  
**Associate Minister of Education (School Operations)**

## Hon Jan Tinetti

Minister of Internal Affairs  
Minister for Women  
Associate Minister of Education



Hon Judith Collins  
Member of Parliament for Papakura  
Parliament Buildings  
Wellington

Tēnā koe Ms Collins

I am pleased to inform you that I am beginning consultation on the proposed establishment of a new secondary school (Year 9-13) on Jesmond Road, Drury West, Auckland.

Under section 209 of the Education and Training Act 2020, I am required to undertake consultation with the boards of all state schools whose rolls might be affected by the establishment before making a final decision on the proposal.

Once this consultation has been completed, I will consider a further report from the Ministry of Education containing all consultation feedback. I hope to then be in a position to make a decision on establishment of the school.

Nāku noa, nā

A handwritten signature in black ink, appearing to read 'J. Tinetti'.

Hon Jan Tinetti  
**Associate Minister of Education (School Operations)**