



Te Poutāhū
Curriculum Centre

Totou Matatohi & Tau Fakatutalaaga mo e Tau Palana Fakagahuahua he Tau Numela

AOKUSO 2022



**Te Tāhuhu o
te Mātauranga**
Ministry of Education

**Te Kāwanatanga
o Aotearoa**
New Zealand Government

Folafolaaga

Kamataaga	5
Ko e tau Five Focus Areas (tau faahi ne lima ne onono fakalahi ki ai) he Action Plans (palana fakagahuahua)	6
Ko e tau ononoaga fakamua ke gahuahua atu ke he Action Plans	8
Fakamalolo ke totou ke he tau matatohi mo e tau fakatutalaaga mo e totou numela ne finaatu he puhala katoatoa	8
Talaga hake he Common Practice Model	8
Liu kitekite ke he tau gahua mo e tau lagomatai	8
Fakaholo ki mua e tau gahuahua atu ke he tau puhala ne fakaako	8
Tau matutakiaga he tau puhala fakaako uho	9
Common Practice Model (Ko e fakataitai fakagahuahua kua fa mahani lahi ke fakaaoga)	10
Description (Talahauaga fakamaama).....	10
Puhala ke kamata mo e atihake e Common Practice Model	11
Totou matatohi & tau fakatutalaaga mo e tolomaki ki mua he tau totou numela	11
Kitekiteaga ke he tau puhala gahua iloilo mae Literacy & Communication	12
Focus Area 1 (Ko e faahi ne onono fakalahi ki ai)	14
Focus Area 2	17
Focus Area 3	18
Focus Area 4	20
Focus Area 5	22
Kitekiteaga ke he tau puhala gahua iloilo mae Totou Numela	24
Focus Area 1	26
Focus Area 2	29
Focus Area 3	31
Focus Area 4	33
Focus Area 5	34

Lolomi Fakapuloa he Faahi Gahua Fakaako Tama, Niu Silani, Aokuso 2022.
 Mātauranga House, 33 Bowen Street
 PO Box 1666, Thorndon
 Ueligitoni 6140, Niu Silani.

www.education.govt.nz

Crown copyright © 2022

ISBN 978-1-77697-015-5 (Lagaki hila)
 ISBN 978-1-77697-016-2 (Kupega hila)



Kamataaga

Ia Mati 2022, ko e Ikipule Lagomatai he Faahi Fakaako ko Jan Tinetti ne kamata e *Literacy & Communication and Maths Strategy* (ko e Strategy). Ko e Strategy ne tau i atu ke he manako ke he ha tautolu a tau puhala fakaako ke mitaki atu e lagomatai ke he tama aoga kamata mai he tau fakaakoaga fakamua mo e tau fakaakoaga he fale aoga. Ne finaatu ai ke talaga e taha puha ne lahi e lagomatai ke he tau faiaoga mo e tau takitaki ke kitia maali mo e tau i ke he tau manako kehekehe he tau fanau aoga, mo e maeke he tau fanau aoga ke moua oti e tau mena ne ha ha i ai ke holo ki mua mo e moua e kautu ke he totou matatohi & tau fakatutalaaga mo e totou mata numela.¹ Ko e tau faahi nei ne mahuiga lahi ke he tau fanau aoga ke fehagai mo e kau atu ke he ha lautolu a tau fakaakoaga mo e tau tagata, mo e ke mailoga e tau manako ma lautolu mo e ha lautolu a tau maaga.

Ko e ha tautolu a tau fenoga ke moua e lautatai mo e mitaki lahi ne kamata mua ke he tau fakakiteaga he tau hikihikiaga uho he tau puhala gahua ke fakamalolo e tau puhala fakaako, tau fakaakoaga, mo e tau fuafua ke he totou matatohi & tau fakatutalaaga mo e totou numela. Ko e *Literacy & Communication and Maths Action Plans* (ko e Action Plans) ne fakakite fakamahino e tau puhala ka gahua a mautolu he tau tau ne hagamoo agai ki ai mo e mailoga e tau fakakiteaga he Strategy. Ko e tau gahua nei kua fita e iloa ha ko e tau pulotu ne kua tufatufa mo tautolu mai he faahi gahua mo e falu foki e tau pulotu mo e tau tagata ne fai totouaga ke he tau gahua ke he magaahe ka fakafetui auloga e Strategy.

Kua fakakite fakamatafeiga fakamalolo he Action Plans e tau puhala fakaako ha ko e tau kumikumiaga mo e tau fakamooliaga; fakamalolo e tau lagomatai ke hokotia e tau foli ke he tau tuaga gahua pulotu; fakamaaliali e tau fakafetuiaga he tau puhala fakaako mo e tau magafaoa, iwi, mo e tau maaga; mo e fakatumau e lautatai ke he falu foki e tau lagomataiaga mo e tau koloa fuafua ke lagomatai ke he tau faiaoga ke mailoga mitaki mo e tau i ke he tau manako he tau fanau aoga. Ko e taha puhala tauteute mitaki ke he gahua ne kua lata ke fai, ko e mena ia kua matutaki e tau Action Plans ke he tau gahua ne laulahi atu he kitia ke he puhala katoa ne takitaki e Te Poutāhū | Curriculum Centre. Lafi ki ai e mena nei e fakafoouaga he *The New Zealand Curriculum* (NZC), tau hikihikiaga ke he NCEA (tuga e totou matatohi mo e totou mata numela foou ne tatai ha laua magaahe ke taute), mo e fakagahuahua tumau e *Early Learning Action Plan*.

Ko e kautu he Action Plans ne moua ni kaeke ke fakamooli mo e kau fakalataha ke lagaki hake e tau fakakatoatoaga ke lata mae tau fanau aoga oti mo e ha lautolu a tau magafaoa, muaatu kia lautolu ne kua nakai lahi e tau lagomatai ne kua fa moua. To fai magaahe mitaki ke gahua auloga ke he tanakiaga mo e fakagahuahua he tau puhala kehekehe ka moua ha kua o ki mua, ke maeke ia tautolu ke iloa mooli ko e tau manako he tau kavikavi kaina mo e tau kakano. Amaamanaki lahi a mautolu ke gahuahua auloga ke he tau amanakiaga, ha e a mautolu ne fae liu fakamoui e fiafia ke he totou matatohi mo e tau fakatutalaaga mo e totou mata numela he ha tautolu a tau fanau aoga mo e ha tautolu a tau faiaoga.

Maeke ia koe ke moua falu foki a tau vala tala hagamoo ke he Strategy ne nofo fakalataha mo e tau Action Plans nei he hau mautolu a poku kupega hila:

<https://www.education.govt.nz/literacy-and-communication-and-maths-strategy>

¹ **'Maths'** ne fakaoga he Strategy mo e Action Plans ko e kupu fakaputupu ke lata mae tau fakalatahaaga he tau fakaakoaga, tau makaka gahua, tau fahia, mo e tau maamaaga ne putoia oti e tau faahi kehekehe he totou numela, fakaako ke he tau lafilafi numela, mo e tau totouaga ke he tau numela kehekehe he motu.

Ko e tau Five Focus Areas he tau Action Plans

Iloa e mautolu ko e na loga e tau valavala ne lauia e tau fakaakoaga mo e tu puhala ke fakaako mo e tau mena ne moua mai. Nakai fai hikihihiaga ne maeke ke fakahoko mai e tau hikihihiaga ne kua lata ia tautolu ke moua mae totou matatohi & fakatutalaaga mo e totou mo e lafilafi ke he tau mata numela. Tuga ne fakatokatoka he tau Five Focus Areas, to fakaaoga a mautolu he tau puhala gahua fakatatau ke fakagahuahua aki e Strategy, mo e mouaaga he tau tupe inivese mai he Fakatufono ke fakatolomaki ki mua e tau fakatokatokaaga uho fakamua.

To fakatokatoka magaaho e tau gahua ke he tau tau ne lima ki mua ke fakamooli to fahia ke leveki ke he tau hikihihiaga, kua fakatatau mitaki e tau gahua, mo fai magaaho ke moua e taha fakafetuiaga aoga.² Fakalataha kua amanaki e tau fanau aoga ke hoko ke he amaamanakiaga tokoluga, mauokafua e iloa e ha lautolu a tau totouaga motu, vagahau motu, mo e tau aga fakamotu. Ko e tau gahua nei kua fakatokatoka ke he ua e tau Action Plans: taha ke lata mae totouaga ke he tau matatohi & tau fakatutalaaga, mo e taha ke lata mae totouaga ke he tau numela. Loga he tau gahuahua fakalotomatala ne mahani ki ai ke he ua e tau Action Plans, ka e fai ne igatia ni ke he taha poke ua he kau tokoua. Ko e tau manatu fakakuku na i lalo ne fakamaama e tau amaamanakiaga he tau Focus Area, ne fefakaogaaki he tau totouaga ke he tau matatohi & tau fakatutalaaga mo e tau totouaga ke he tau mata numela.

FOCUS AREA 1:

Maamagia e tau amaamanakiaga ke lata mae tau puhala fakaako ke uta fakamitaki e gahua

Ko e amaamanakiaga laulahi he Focus Area 1 ke fakafeveveia mo e taha maamaaga he tau makaka mo e lotomatala ne kua manako lahi mae tau fanau aoga ke he tau matatohi & tau fakatutalaaga mo e totouaga ke he tau matanumela. Putoia ke he tau mena nei e gahua ne kua fita e kamata ia NZC ke fakafouu ke fakamaama e totouaga ke he tau matatohi & tau fakatutalaaga mo e totouaga ke he tau matanumela ne kua manako lahi mae tau faahi oti he tau fakaakoaga. To fakatokatoka mo e tatanaki e mautolu e Common Practice Model (ko e tau vala tala he tau **laupepa 10-11**) ke foaki e tau hatakiaga ne maama ha ko e tau vala tala kumikumi ke iloa ko e lauia mitaki fefe e tau fakaakoaga ke he totouaga he tau matatohi & tau fakatutalaaga mo e tau totouaga he tau matanumela he kamata mai he tau fakaakoaga foku ke hoko ke he Year 13. Kua tatanaki foki a mautolu ke he tau koloa fakaaoga mo e tau hatakiaga ke lagomatai atu ke he tau faiaoga mo e tau fanau aoga, lalafi ki ai e tau fanau ne kehekehe e tau aga fakamotu mo e vagahau ke tau leo kehekehe. Ko e tau tauteaga nei ke maeke e faiaoga ke lagomatai mo e loto malolo e tau fanau aoga ke tolomaki ki mua mo e moua e kautu.

² Mailoga e tau taimi he falu a tau gahua to tua ki ai ke lata mae tau tupe moua ke he tau magaaho i mua mo e tau fifiliaga ke he tau mata fakatufono.

FOCUS AREA 2:

Ko e tau lagomatai ke he tau fahia ke he puhala he tau gahua ke moua e tau faiaoga lauia mitaki ne maeke ke moua e tau manako he tau fanau aoga mai he tau matakau kehekehe

Ko e tau foliaga laulahi he Focus Area 2 ke to e tau lagomatai ke he tau faiaoga mo e tau takitaki ke he tau totouaga ke he tau matatohi & tau fakatutalaaga mo e tau totouaga ke he tau matanumela ke he tau fakatokatokaaga fakaako, ke he tau atu motu tata, pihia mo e motu katoa. Putoia ke he tau mena nei e fakamalolo ke he tau makaka, tau gahuahua fakalataha, tau lagomatai ke he tau fahia, mo e tau magaaho ke fakaako ke he tau faiaoga mo e tau takitaki, pihia foki mo e foaki age he tau fakaakoaga pulotu mo e tatanaki (PLD) mo e Initial Teacher Education (ITE) ne fakatatai mo e Common Practice Model. To foaki he tau mena nei ke he faiaoga e fakamaloloaga mo e kua pehe kua mitaki atu e tau taoga ke fakahoko e tau fakaakoaga ke he ha lautolu a tau fanau aoga.

FOCUS AREA 3:

Tau matutakiaga fakaako malolo ne lagomatai mo e maali e tau fakaakoaga

Ko e foliaga laulahi he Focus Area 3 ne lagomatai mo e fakamalolo e tau matutakiaga he tau fale fakaako mo e tau magafaoa, iwi, mo e tau maaga, ke maeke e tau fanau aoga ke mailoga ha lautolu a tau malolo katoatoa. Kua putoia ke he tau mena nei e tau omoiaga ke he holoaga mafola he tau fanau aoga (finaatu he tau fakatokatokaaga mo e tau puhala kua fakamailoga) mo e tau puhala hokotaki ne maali mo e tau magaaho ke fetufatufaaki e tau vala tala mo e tau magafaoa. To oofe he tau mena nei e puhala fakaako ke holo ki mua e tau matutakiaga ke he tau maaga ne fekafekau ki ai, mo e fai tauiaaga malolo ke he tau manako kehekehe he tau fanau aoga.

FOCUS AREA 4:

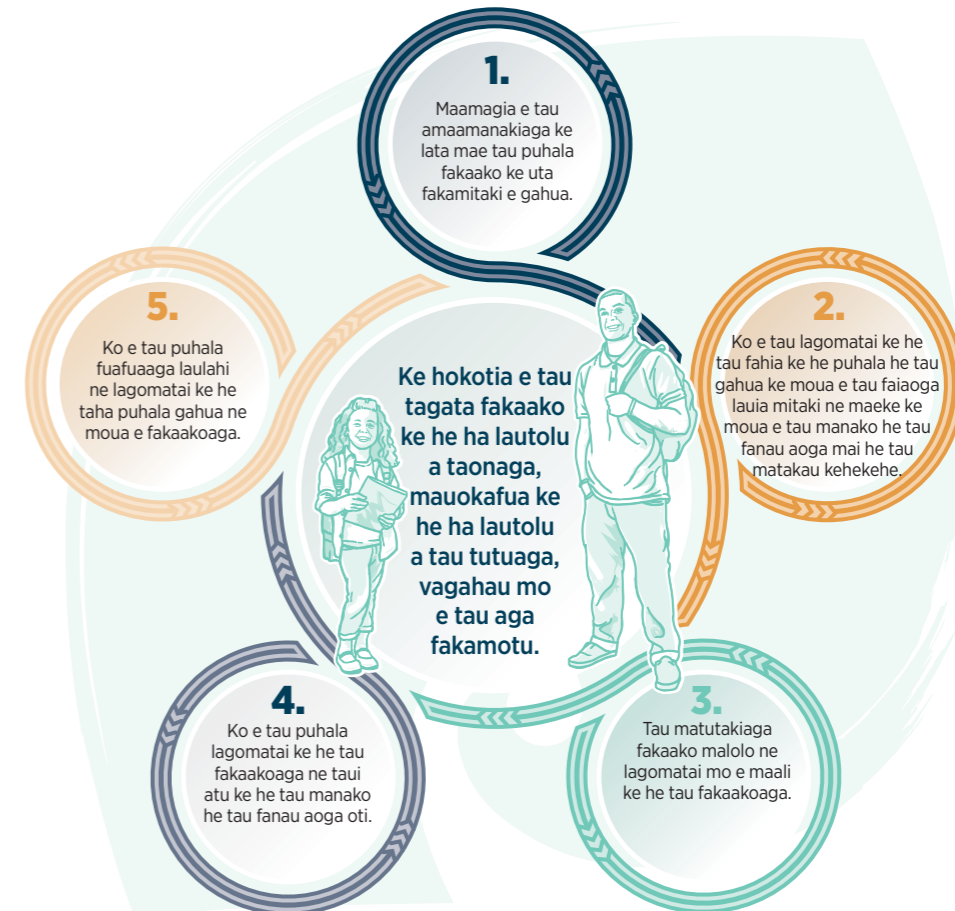
Ko e tau puhala lagomatai ke he tau fakaakoaga ne tau atu ke tau manako he tau fanau aoga oti

Ko e foliaga laulahi he Focus Area 4 ne taute pauaki ke mailoga e tau manako kehekehe he tau fanau aoga ke fakatumau ke kitia, maama, mo e moua. Putoia ke he tau mena nei e liliu kitekite ke he tau lagomatai ne ha ha ia ke fakamooli ke he Common Practice Model, mo e tatanaki e taha puhala ne fakaaoga ke he tau vala tala kumikumi ke he tau puipui haohao mitaki fakalataha mo e tau lagomatai fakatagata ne talaga pauaki ke lagomatai aki e tau manako kehekehe he fanau aoga he hala. Kua pehe e tau mena ia kua fai ataaga oti e tau fanau aoga ke moua e tau lagomatai hako ke he magaaho hako ke maeke ia lautolu ke moui olaola mo e nakai fai alaia kia lautolu e tau lagomatai.

FOCUS AREA 5:

Ko e tau puhala fuafuaaga laulahi ne lagomatai ke he taha puhala gahua ne moua e fakaakoaga

Ko e foliaga laulahi he Area 5 ke fakamooli kua tokoluga e tau fuafuaaga gahua mo e tau lakau fakaaoga ne kua fakahu ke he tau puhala gahua, mo e tau talahauaga malolo ne kua ha ha i ai ke fakailoa e tau holoaga mitaki tumau. Putoia e tau mena nei ke he liu kitekite ke he tau lakau fuafua ne kua fita e ha ha i ai he hala ke fakamooli kua fakaaoga e Common Practice Model, mo e tatanaki hake e ha mautolu a tau talahauaga ke he tau fuafuaaga mo e tau puhala kumikumi. Ka mole e tau magaaho, to fakafeveveia e tau sitepe nei mo e tau gahua ke he tau fuafuaaga mo e tau koloa fakaaoga ke moua e tau fakakiteaga aoga ke lagomatai aki e tau faiaoga ke mailoga mo e tau atu ke he tau manako mo e tau ononoaga tokoluga he tau fanau aoga mo e ha lautolu a tau magafaoa. To fai puhala ne moua mai e tau vala tala foku ke lagomatai aki e tau fakaakoaga ke holo ki mua mo e tau gahua takitaki ke taute ke he tau puhala ne lata tonu mo Aotearoa Niu Silani.



Ko e tau ononooga fakamua ke gahuahua atu ke he tau Action Plans

Fakamaloloaga ke he tau totouaga ke he tau matatohi mo e tau fakatutalaaga mo e tau totouaga ke he tau numela ne toka ai ke he puhala katoatoa

Kua fita e tau gahua he kamata ke lata mae tau fakaakoaga fakamua mo e tau puhala aoga ke he falu gahua mahuiga ne onono ke fakamooli e tau logonaaga mitaki mo e tau tauiaoga ke he tau fakaakoaga he tau fanau aoga ne lagomatai kia lautolu ke tolomaki ki mua mo e moua e kautu ke he tau faahi ne uho kia lautolu. Putoia foki ke he tau mena nei e tau atihakeaga he tau koloa fakaako mo e fakatolomaki ki mua ke lata mae tau fakaakoaga foou, ko e fakafoou he *The New Zealand Curriculum*, mo e fakagahuahua he tau poakiaga he NCEA ke he tau fakaakoaga ke lata mae tau totouaga ke he tau matatohi mo e tau totouaga ke he tau matanumela.

Atihake he Common Practice Model

Ko e taha sitepe uho a nei ke fakamooli kua mitaki e tau tutuaga he tau faiaoga mo e tau takitaki ke gahua mae tau fanau aoga mo e ha lautolu a tau magafaoa. To tuku hifo e tau manatu nakai iloa mooli ke he tau fakaakoaga mo e tau iloaaga ke he totouaga he tau matatohi & tau fakatutalaaga mo e totouaga he tau matanumela, tupu mai ai e maamagia mo e fetatataiaki ke he tau fakaakoaga, tau takitakiaga, mo e tau puhala ne fuafua aki e tau mena nei. Ko e Common Practice Model to maamagia ke he tau fakaakoaga ne mua, mo e ko e tau puhala ne mua ke lata mae tau faiaoga ne tau mitaki ke he tau manako kehekehe mo e tau mohemiti he tau fanau aoga. Ka tuku mua e tau mena nei to fai lagomatai atu e tau faiaoga mo e tau takitaki ne ha ha ki ai he tau fakaakoaga fakamua mo e tau fakaakoaga ke he tau fale aoga ke moua e fakamahaniaga ke fakaako e tau fanau aoga ke totou pepa & fakatutala mo e totou matanumela. Totou **tau laupepa 10-11** ke moua falu foki e tau vala tala hagai ia ke he Common Practice Model.

Liliu onono ke he tau fekafekauaga mo e tau lagomatai

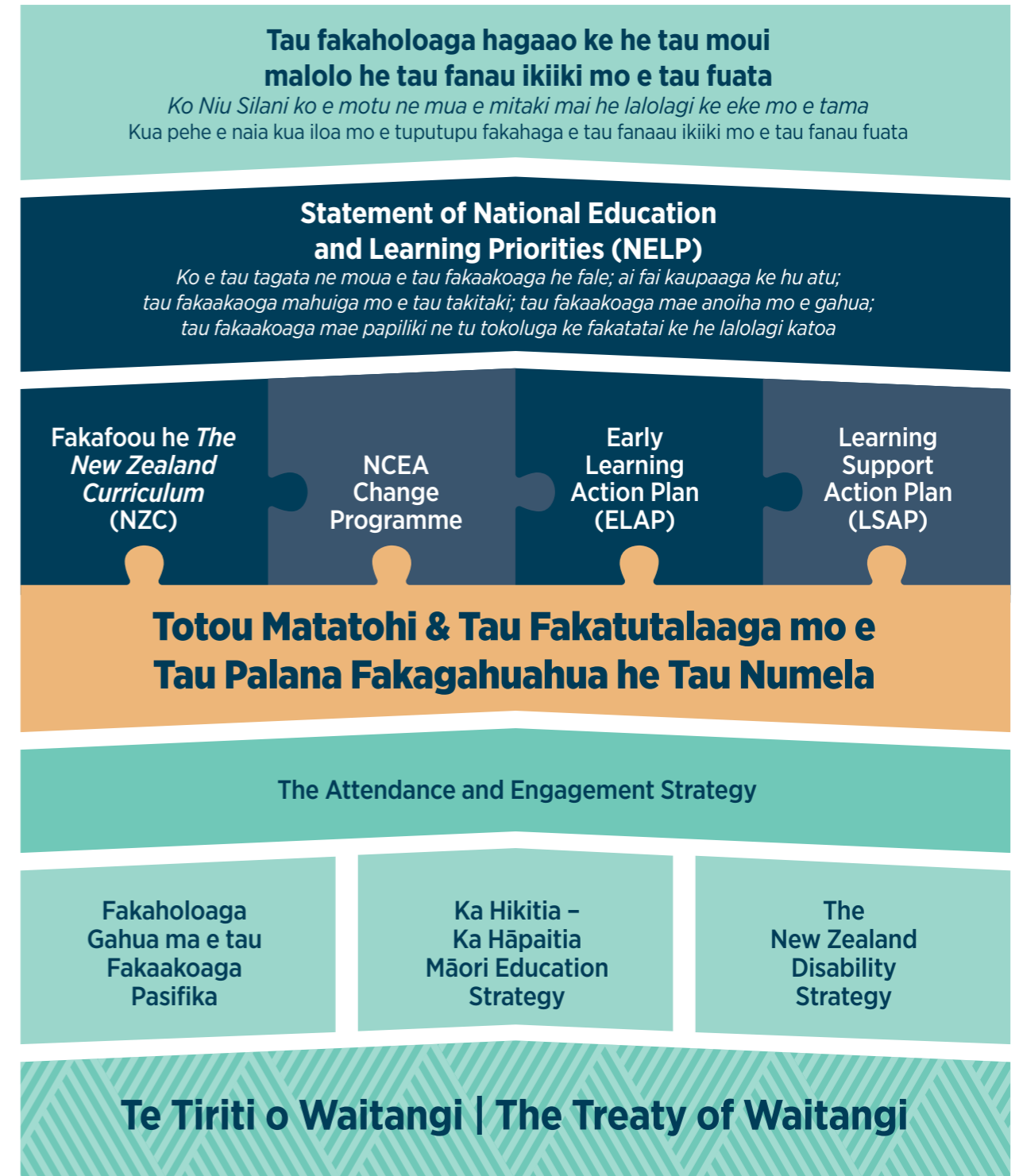
Ke he magaaho ku to liliu a mautolu ke kitekite ke he tau lagomatai lalafi ke he tau lagomatai ke he tau fakaakoaga, tau koloa fuafua, mo e tau foaki ke he tau fahia ne kua fita ki loto. To maeke he tau mena nei ke talitonu ki ai kua lautatai mo e tau tauteaga mo e tau hatakiaga ne ha ha ki ai he Common Practice Model. Ka fai magaaho ka mole, to fai lagomatai foki ka fakatokatoka ke eke e tau puhala gahua ke holo mitaki, ke moua he tau fanau aoga e tau lagomatai ne manako ki ai, mo e maama ke he tau tagata oti e tau faahi gahua ne ha i ai - pihia foki ko e magaaho fe ne maeke a lautolu ke fakaakoaga. Ke he tau faiaoga mo e tau takitaki to fai lakau ke fuafua e lautolu ke mailoga tumau mo e fai tau atu ke he tau fanau aoga mo e ha lautolu a tau malolo, mo e maeke ke moua e PLD ne finaatu he hala ne lagomatai a lautolu ke maama ke he Common Practice Model mo e atihake ha lautolu a tau gahua.

Ko e tolomaki he tau gahua ke hoko atu ke taha puhala gahua ne fakaako

Kua fakakite he tau Action Plans e ha mautolu a fakamooli ke tatanaki e taha puhala gahua ne fakaako - taha ne tau ke he taha lalolagi ne fae hikihihi, ko e tau kumikumiaga ne fae fakaeaea mai, mo e tau manako he tau fanau ne fae hikihihi. Ko e tau sitepe ne maeke ke pihia ne lalafi ki ai e tatanakiaga ke he tau kumikumi, levekiaga, mo e fuafua e tau puhala gahua ke lata mae tau fakaakoaga fakamua mo e tau fakaakoaga ke he tau fale aoga. Ka atihake e tau vala tala malolo mo e tau puhala ke iloa e tau talahauaga ke lagomatai tumau aki e tau fakagahuahuaaga mo e fakaata a mautolu ke kitia kua fai kehe e Strategy ke he tau faiaoga mo e tau fanau aoga. To fakamalolo he tau mena nei e Common Practice Modle, mo e fakamooli ko e tau hikihihiaga ke he tau puhala fakaako to kitia e tupuaga he tau mena iloa mo e iloa ko e heigoa ne gahuahua mitaki ke lata mae tau fanau aoga kehekehe.

Tau matutakiaga he tau puhala fakaako uho

Kua lagomatai mo e fakatolomaki he Strategy mo e tau Action Plans e tau gahua laulahi ke hikihihi e ha tautolu a tau puhala ne fakagahuahua e tau fakaakoaga. Ko e fakatino na i lalo ne fakakite e tau matutakiaga mo e tau puhala gahua uho mo e tau palana he Fakatufono.

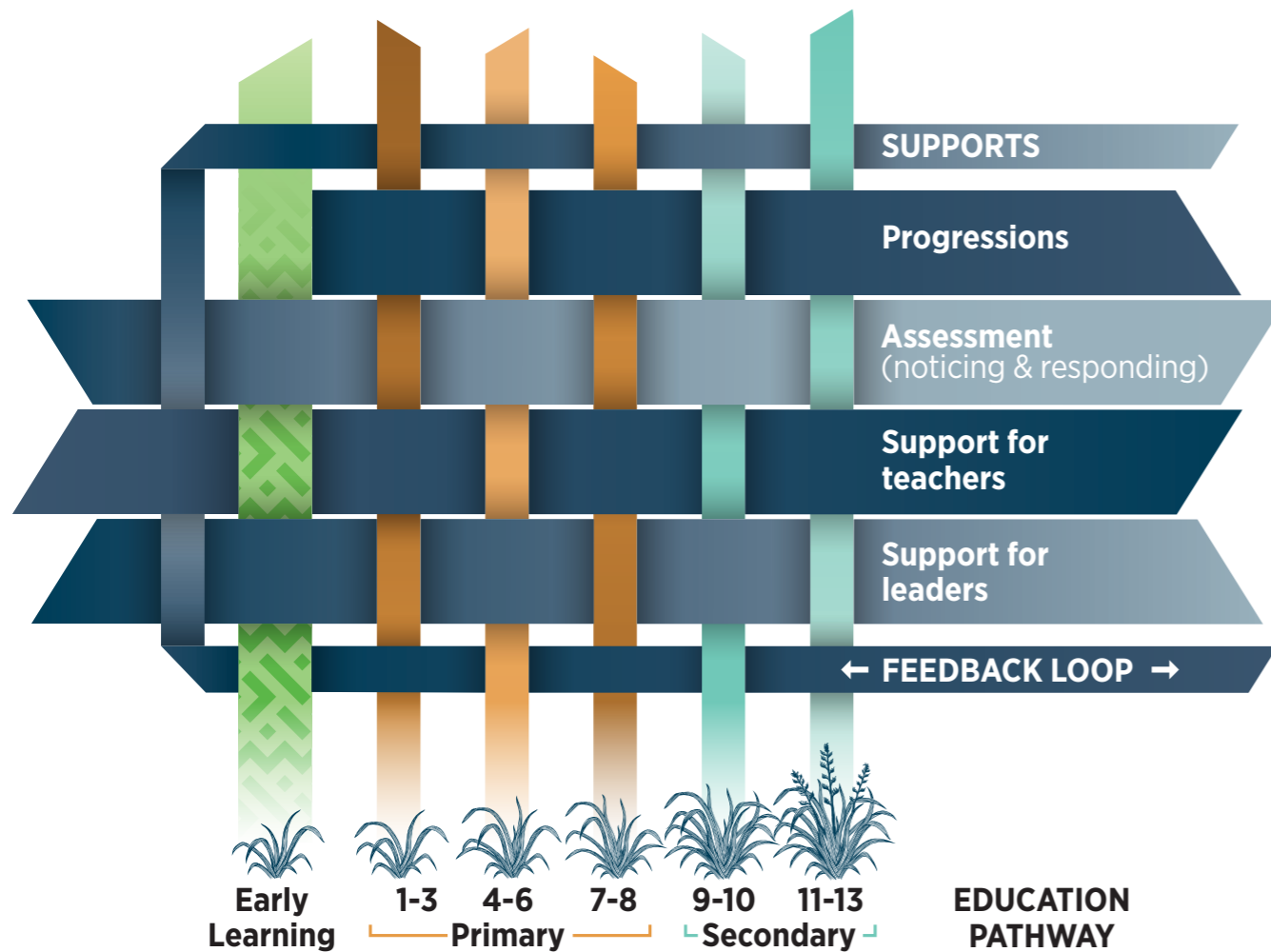


Common Practice Model (Ko e fakataitai fakagahuahua kua fa mahani lahi ke fakaaoga)

Fakamaamaaga

To fakakitekite he Common Practice Model (CPM) e tau manatu uho mo e tau puhala fakaaoga ke toko aki e tau fakaaoga mo e tau fakaaoga mae totouaga ke he tau matatohi & tau fakatutalaaga mo e totou ke he tau matanumela ne ha ha ki ai he *Te Whāriki*³ mo e *The New Zealand Curriculum*. To hataki ke he tau puhala fakaaoga mahuiga mo e tau puhala gahua fuafua mo e tau puhala ne taute aki e tau fakaaoga fakamua ke hoko atu ke fakaoiaga he aoga tokoluga, i Aotearoa Niu Silani.

To to ki loto e CPM ke he tau lagomatai mo e tau koloa fakaaoga, tau fakaaoga pulotu mo e tau atihake (PLD), mo e tau fakaholoaga Initial Teacher Education (ITE). To moua e maamaaga mo e tumau ke tatai ke he tau faiaoga mo e tau fanau aoga, fakaalaala e tau fakaaoga mo e tau iloaaga ke he totouaga ke he tau matatohi & tau fakatutalaaga mo e totouaga ke he tau matanumela, mo e tatai e tau lagomatai moua mo e mitaki lahi mae tau fanau aoga.



Ko e puhala ke fakatokatoka e Common Practice Model

Ko e haaoga mo e tau talahauaga he CPM ne kua nakai la fakatokatoka ia. To tauteute auloga mo e fakakite e tau logonaaga ke he tau talahauaga he tau kumikumiaga fooo. To fai magaaho mae tau tagata ke kau atu ki ai he o atu a tautolu.

Ke he fakaoiitiaga he tau 2022 to gahua auloga mo e tau pulotu ke tohi fakataitai e taha pepa CPM. Ko e tau fakafetuiaga laulahi haaoga ke he pepa fakataitai to fakafita foki moe faahi fakaaoga he Term 1 mo e 2, 2023. Ha kua atia hake e CP. to liu kitekite mo e fakafuoo e tau lagomatai he PLD ke fakalaulau ki ai mo e lagomatai ke he tau faiaoga mo e tau takitaki ke maama e tau hikihikiaga he tau puhala gahua ke moua e tau mitaki mae tau fanau aoga. To liliu foki a mautolu ke kitekite mo e fakafuoo e tau koloa fakaaoga mo e tau lagomatai, lalafi ki ai e tau fuafuaaga mae tau puhala fakaaoga mo e tau lakau fakaaoga ke he tau fuafuaaga.

To fai magaaho a mautolu ke fakagahuahua katoatoa e CPM ke he tau fakaaoga fakamua mo e tau fakaaoga ke he tau fale aoga, mo e leveki e tau mena nei ke fakatautau ke he tau vala uho ne ha ha ki ai he ha tautolu a tau pepa fakaaoga tama mo e taha fakaholoaga ke gahua fuafuaaga, tuga e fakafuoo he NZC mo e fakafeveiaaga mo e NCEA fooo mo e tau fakaaoga- fakalataha. To lagomatai he mena nei ke fakamooli e tau hikihikiaga ke he tau fakaaoga ne fakamailoga he CPM kua maeke ke leveki mitaki, lagomatai ke he tau fahia mo e tokamau e tau manatu fakakite, mo e kua lalafi nakai lulu e tau hikihikiaga.

Ko e tau fakaholoaga ki mua he tau totouaga ke he tau matatohi & tau fakatutalaaga mo e tau totouaga ke he tau numela

Ko e gahua ke he CPM ne matutaki foki ke he tau gahua ha e ne fae tauteute ke tatanaki aki e tau fakataitai ke lata mae tau fakaaoga fooo ke he tau numela & tau totouaga ke he tau numela kehekehe mo e tau faahi fakaaoga ke he vagahau Peritania he NZC. Ko e fakaholoaga pepa fakataitai ke lata mae tau faahi fakaaoga nei ne tatanaki fakataitai mo e tau fakaholoaga totou matatohi & tau fakatutalaaga mo e totou matanumela to eke mo taha vala he CPM.

Ko e tau fakaholoaga fooo to matutaki ke he tau puhala totou matatohi & tau fakatutalaaga mo e tau totou matanumela ko e tau faahi fakaaoga oti mo e to moua e maamagia mo e tau vala tala ke he tau sitepe fakaholoaga ne lagomatai e tau fanau aoga ke he tau faahi he tau fakaaoga. Ko e tau fakaholoaga ki mua nei to fakamalolo e lautatai he hala. To fakailoa kia lautolu ha ko e tau gahua ke he tau puhala fooo mo e tau lakau ne lagomatai ke fakaholo ki mua e tau puhala fakaaoga fooo ne lagomatai ke he tau fuafuaaga mo e tau puhala fakaaoga ke he tau totouaga ke he tau matatohi mo e tau matanumela mo e to fakamailoga e tau pepa aoga ne o - tokoua mae ha NCEA, ke maeke he tau fanau aoga ke moua e lagomatai mo e teuteu ke he ha lautolu a puhala ke he tau vahega tokoluga he aoga tokoluga mo e molea.

³ Ko e tau talahauaga ke he *Te Whāriki* he puhala Strategy mo e Action Plans ke he puhala he *He whāriki mātauranga mō ngā mokopuna o Aotearoa Early childhood curriculum*. Ne nakai putoia he puhala gahua nei e puhala he *Te Whāriki a te Kōhanga Reo*.

Kitekiteaga ke he tau puhala gahua iloilo mae Literacy & Communication⁴

FOCUS AREA 1

1.1 Fakafoou e fakaako ke he totou matatohi ke he NZC, lalafi ke he fakamaloloaga he tau fakatutalaaga mo e totouaga ke he tau numela hila.

1.2 Tai e Learning Progression Frameworks mo e Literacy Learning Progressions mo e taha fakaholoaga ki mua ke lata mae aoga ne fakakite e fakaatuatu he fakaakoaga mae totouaga ke he tau matatohi & tau fakatutalaaga, ha ko e taha vala he Common Practice Model.

1.3 Atihake e tau koloa fakaaoga mo e tau hatakiaga ke lagomatai e faiaoga ke maama mo e tau fakakia ke he fakaholo ki mua he tau fanau aoga he tau fakaakoaga vagahau mo e tau totouaga ke he tau matatohi ke tau fakaakoaga fakamua, ha ko e taha vala he Common Practice Model.

1.4 Atihake e tau hatakiaga ke fakaako fefe e totouaga ke he tau matatohi & tau fakatutalaaga he aoga, ha ko e taha vala he Common Practice Model.

1.5 Atihake e tau koloa fakaaoga, tau hatakiaga, mo e tau lakau gahua ke lagomatai aki e tau fakaakoaga totou ke he tau matatohi & tau fakatutalaaga ke lata mae tau fanau aoga ne kehekehe ke he tau aga fakamotu mo e kehekehe e tau vagahau motu.

FOCUS AREA 5

5.1 Liu kitekite mo e atihake e tau lakau fakaaoga ke he tau fuafuaaga ke lata mae tau aoga.

5.2 Talaga e taha puhala fuafua ke onono ke he holo mitaki he tau puhala fakagahua mo e taute e tau hihikihiaga ke leveki aki e puhala gahua anoia.

FOCUS AREA 4

4.1 Talaga e taha puhala gahua ne ha ha i ai e tau hapo haohao mitaki ke lata mae tau fanau aoga he ha he tau aoga.

4.2 Liu kitekite, lafilafi ki ai mo e hihikihi e tau lagomatai lalafi ki ai ke lata mae tau totouaga ke he tau matatohi & tau fakatutalaaga e tau lagomatai ke he puhala fakaako, fakamooli kua fakatatai ke he Common Practice Model.

4.3 Tatanaki hake e tau lagomatai ha ko e tau kumikumiaga ne mailoga e tau malolo ke he tau manamanatuaga ne kua kehe mai he laulahi he tau fanau aoga (tuga e, dyslexia, dysgraphia, dyspraxia, lotomatala lahi).

⁴ Mailoga e tau taimi he falu a tau gahua to tua ki ai ke lata mae tau tupe moua ke he tau magaaho i mua mo e tau fifiliaga ke he tau mata fakatufono.



FOCUS AREA 2

2.1 Tatanaki hake mo e fakamalolo e tau takitaki ke he tau pepa fakaako ke lata mae totouaga ke he tau matatohi & tau fakatutalaaga ke he tau puhala uho ne tolu e fufuta: motu katoa, tau matakavi, mo e ke he tau tauteaga he tau fakaakoaga.

2.2 Talaga mo e tatanaki hake e tau fakaakoaga pulotu ke lata mae gahuaaga ne ono fakahako ni ki ai, molulu mo e lautatai mo e Common Practice Model.

2.3 Lalafi ki ai e Common Practice Model mo e tau puhala kehekehe lata mo e tau fakaakoaga, tau puhala fuafua aki mo e tau fakaakoaga ne fakaaoga oti he tau kautaha ITE.

FOCUS AREA 3

3.1 Lagomatai e tau fakaakoaga ke he tau fakaakoaga fooku mo e tau aoga ke gahua mo e tau magafaoa, iwi, mo e tau maaga ke he tau puhala ke taofi e tau aga fakamotu, ke fakahokulo e tau fakaakoaga ke he tau matatohi & tau fakatutalaaga he tau fanau aoga.

3.2 Fakamaama fakamitaki e tau mena kua lata ke fahia ki ai he tau totouaga ke he tau matatohi mo e tau fakatutalaaga ke hokotia ke he tau puhala fakaako mo e tau gahua anoia.

3.3 Tatanaki hake e tau koloa fakaako, tau hatakiaga, mo e tau koloa ke lagomatai ke he tau fakatokatokaaga fakaako ne hokotaki ke he tau magafaoa ke iloa kua fefe e tau fakaakoaga ha lautolu a tau fanau ha ko e taha vala ia ke taofi pihia.

3.4 Lagomatai e tau hihikihiaga mitaki ke lata mae tau fanau aoga mo e tau magafaoa, ke he tau faahi ne oti.

3.5 Taofi e tau fakafetuiaga gahua mo e National Library ke fakaloaloa e tau fakafetuiaga mo e tau fakaakoaga ke he totouaga he tau matatohi & tau fakatutalaaga.



Focus Area 1: Maamagia e tau amaamanakiaga ke lata mae tau puhala fakaako ke uta fakamitaki e gahua

1.1	Fakafoou e tau fakaakoaga ke totou matatohi ke he NZC, lalafi foki ke fakamalolo e tau fakatutalaaga mo e totou ke he tau numela hila.	
1.1.1	Fakafoou e tau totou ke he tau matatohi ne fakakite he NZC ke moua mai e taha puhala gahua ne maali mo e lagaki hake e totou matatohi mo e tau fakatutalaaga, lalaga e tau felagomataiaki he totou, tohitohi, vagahau, fanogonogo, kitekrite, fakatata, mo e totou ke he tau tohi hila.	» Ka fakafoou e NZC to fakafoou e faahi fakaako ke vagahau Peritania, lalaga e tau holo ki mua he totou matatohi & tau fakatutalaaga kehekehe ke he tau faahi fakaako ne oti, fakalilifu mo e lopoti mai e Treaty. Ko e tau hikihikiaga uho ne lalafi ki ai:
1.1.2	Talaga e tau logonaaga ke he tau fakaakoaga maaliaki ke atiati hake aki e tau leo vagahau mo e totou ke he tau matatohi hila, tau pulotu, makaka mo e fahia ne ha ha i ai ke he NZC.	» fakalaulahi e onoonaaga ke he magaaho nei ke he totou mo e tohitohi ke fakalaulahi mo e putoia e tau pulotu mo e tau makaka, lalafi foki ke totou hila
1.1.3	Tatanaki hake e Common Practice Model ke lago ki ai e NZC ne kua fakafoou mo e tupu hake e maama mo e lautatai mitaki ke he tau fakaakoaga mo e tau gahua fakamahani ke lata mae totouaga ke he tau matatohi & tau fakatutalaaga kehekehe ke he faahi fakaako.	» fakamalolo ke he tau matutakiaga he kave he Communication Mana reo he <i>Te Whāriki</i> mo e NZC ke tatanaki hake he tau leo vagahau mo e totou ke he tau matatohi, fakaata mai e tau aga fakamotu mo e tau mahani he tau tagata ke he tau magaaho mo e tau puhala ne moua e tau fakaakoaga » lalaga ki ai e taha onoonaaga hokulo ke he te ao Māori mo e mana ōrite mō te mātauranga Māori. » Ko e onoonaaga hokulo foou he tau fakatutalaaga kehekehe mo e totou ke he tau matatohi hila to lalafi atu ki loto he Common Practic Model.
1.2	Tui e Learning Progression Frameworks mo e Literacy Learning Progressions mo e taha fakaholoaga ki mua ke lata mae aoga ne fakakite e fakaatuatu he tau fakaakoaga mae totouaga ke he tau matatohi & tau fakatutalaaga, ha ko e taha vala he Common Practice Model.	
1.2.1	Liu kitekrite mo e liu tatanaki e Learning Progression Frameworks mo e Literacy Learning Progression ke fakakite maali e fakaatuatu he tau fakaakoaga mae totouaga ke he tau matatohi & tau fakatutalaaga kehekehe.	» Ko e taha fakaholoaga ki mua ne lahi e tau talahauaga ki ai to moua mai e maamaaga mo e tau fakatai ke lagomatai e faiaoga ke maama e puhala ke fakaholo ki mua, tau sitepe uho ke moua e tau fakaakoaga, mo e tau iloaga ke he tau kaupaga ne kua lata ia lautolu ke tuku mata ki ai ke he tau faahi fakaako ne oti, ha ko e taha vala he Common Practice Model.
1.2.2	Fakatuma fakamalolo e totouaga ke he tau matatohi mo e tau iloaga ha ko e taha vala he tau hikihikiaga he NCEA, lalafi ki ai e tau fakagahuahua he taha vahega foou ne kua lata ke taute mae totouaga he tau matatohi.	» Manamanatu ki ai e gahua he School Entry Kete ke moua mai e fakatino he tau malolo he tau fanau aoga he magaaho ka kamata e aoga ha lautolu ke kumi mo e moua e ha lautolu a gutuhala ke hu atu ke holo ki mua he puhala foou. » Ko e tau fakaakoaga ne kua holo ki mua mo lagomatai e tau faiaoga ke fai fifiliaga kua mau nakai e tau fanau aoga ke taute e tau fuafuaaga ke he tau vahega NCEA ne-kua lata ke taute mae totouaga he tau matatohi.

1.3	Atihake e tau koloa fakaaga mo e tau hatakiaga ke lagomatai e faiaoga ke maama mo e tau fakakia ke he fakaholoaga ki mua he tau fanau aoga he tau fakaakoaga vagahau mo e tau totouaga ke he tau matatohi ke he tau fakaakoaga fakamua, ha ko e taha vala he Common Practice Model.	
1.3.1	Tumau ke tatanaki hake e tau lakau mo e tau koloa fakaaga mae tau fakaakoaga fakamua ke lagomatai e faiaoga ke maama mo e fakamooli ke he fakaholoaga ki mua he tau fakaakoaga fakamua he tau fanau aoga (lafi ki ai e social-emotional learning (SEL), leo vagahau, mo e totou ke he tau matatohi), ko e taha vala he Common Practice Model.	» kua lagomatai e mena nei he gahua 4.1 he <i>Early Learning Action Plan</i> (ELAP): 'Gazette e fakaholoaga mae tau fakaakoaga, <i>Te Whāriki</i> , ke lagomatai aki e tau fakafetuiaaga mo e tau manatu uho, tau kave, tau amanakiaga mo e tau mena moua he magaaho ka tatanaki e tau fakaakoaga mae matakavi.'
1.3.2	Lagomatai ke he tau fakagahuahua he tau koloa mo e tau lakau fakaako he Common Practice Model mo e tau gahua ne foaki he Te Poutāhū.	» Fakalautatai foki e mena nei ke ELAP 4.2: 'Fakatau-talaga e tau koloa fakaaga ne iloa kua hako, maeke ke tuaha ki ai, hakohako ke he tau aga fakamotu mo e tau leo vagahau.' » Ko e tau koloa fakaaga to lalafi ki ai e taha onoonaaga hokulo ke he te ao Māori mo e mana ōrite mō te mātauranga Māori. » Kua fakamatafeiga he tau kumikumiaga e tau matutakiaga malolo ha SEL mo e fakaakoaga ke he leo vagahau.
1.4	Atihake e tau hatakiaga ke fakaako fefe e totouaga ke he tau matatohi & tau fakatutalaaga kehekehe he aoga, ha ko e taha vala he Common Practice Model.	
1.4.1	Hukui e tau koloa Effective Literacy Practice mo e NZC Literacy & Communication Teaching foou, Assessment and Learning Guide.	» To lalafi he mena nei e Early Literacy Approach foou ne kua fita e fakagahuahua (fakatai pehe, to pepa Ready to Read Phonics Plus, ko e lagomatai pulotu Better Start Literacy Approach, mo e Reading Recovery kua fakamalolo mo e Early Literacy Support).
1.4.2	Atiati hake taha Strategic Leadership Guide ke lata mae tau takitaki ke he tau tauteaga he tau fakaakoaga, tau pule ke he tau matakau, mo e tau matakau takitaki ke to e Common Practice Model.	» Ko e maeke ke fai hikihiki ke he fakatai gahua to fakamooli kua maeke e tau takitaki ke fakamahani mo e tatanaki e tau puhala ke hikihiki ke lata mae tau manako he tau tagata he maaga.
1.4.3	Taute e taha hatakiaga ne fakaaga he tau vala tala kumikumi mo e tau puhala ne fakaaga ne tolomaki ki mua e tau fakaakoaga mo e tukutuku hifo e tau fekehekeheki hepe ne fa feleveia he hala he tau fakaakoaga.	» Ko e tau hatakiaga ka manamanatu mo e fifili ke he tau puhala kua talia ha ko e tau kumikumiaga ke lata mae tau manako kehekehe he tau fanau aoga, lalafi ke tau manamanatu ke he tau fanau aoga ne veveheua mo e kehekehe e tau manako.
1.4.4	Taute e taha hatakiaga ke he tau magaaho mahuiga ke fakaako mo e tali mitaki e tau totouaga ke he tau matatohi & tau fakatutalaaga kehekehe he o he hala ke lata mae tau fakaakoaga he aoga.	» Ko e tau hatakiaga ke he tau tatanaki pauaki ke kehekehe to lagomatai aki e faiaoga ke fakaoiti e tau mouaaga kelea mai he kupega hila mo e tau fakaakoaga he puhala lafilafi. » Ko e tau hatakiaga to lalafi ki ai e taha onoonaaga hokulo ke he te ao Māori mo e mana ōrite mō te mātauranga Māori.
1.5	Atiati hake e tau koloa fakaaga, tau hatakiaga, mo e tau lakau ke lagomatai aki e totouaga ke he tau matatohi & tau fakatutalaaga kehekehe ke lata mae tau fanau aoga ne kehekehe e tau agamotu mo e tau leo vagahau.	

2

Focus Area 2: Ko e tau lagomatai ke he tau fahia ke he puhala he tau gahua ke moua e tau faiaoga lauia mitaki ne maeke ke moua e tau manako he tau fanau aoga mai he tau matakau kehekehe.

<p>1.5.1</p>	<p>Taute e taha hatakiaga ke lata mae tau puhala fakaako ke lata mae tau vagahau motu kehekehe mae tau fanau aoga oti, nakai ni ko lautolu ne foou mai ke he fakaako ke he vagahau Peritania.</p>	<p>» To katoatoa ke he tau fakaakoaga ne hako ke he tau vagahau motu ne ha ha ki ai he fakatokatokaaga mae tau fakaakoaga, lalafi ki ai e tau kupu mo e tau talagaaga, ha ko e mena na moua mitaki he tau fanau aoga kaeke ke loga atu e tau puhala talaga hake.</p>
<p>1.5.2</p>	<p>Mailoga mo e oma e tau kehekehe ke he tau agamotu mo e tau vagahau kehekehe he tau fanau aoga (lalafi ki ai a lautolu ne fakaako ke he vagahau Peritania ko e taha vagahau kehe ne kua lalafi ki ai) he talaga he tau koloa mo e tau lagomatai pulotu ke lata mae faiaoga.</p>	<p>» Ko e tau manatu uho hagaao ke he tau fakaakoaga he falu vagahau motu ne lalafi ki ai ka fakahu ki loto he tau hatakiaga mo e tau koloa fakaaoga.</p> <p>» Ko e tau hatakiaga mo e tau koloa ka fakamau e tau aga fakamotu, aoga ke he maaga, mo e kitia e malolo, mo e lagomatai ke he faiaoga ke mailoga mo e fakaaoga e tau vagahau kehekehe he tau fanau aoga. To lalafi atu a lautolu ke he Common Practice Model.</p> <p>» Fuafua ke he tau koloa, hatakiaga, mo e tau koloa (lalafi ki ai e School Entry Kete mo e tau hatakiaga foki ke he tau fuafuaaga kumikumi) ke manamanatu fakalahi ke he tau fanau aoga ke fakaako ke he vagahau Peritania ko e taha vagahau ke lalafi atu foki.</p> <p>» To talaga hake e tau fakataitai mo e tau manatu fakatu ne kua fita e kitia kua gahua (fakatai ke he Pasifika Early Literacy Project (PELP), Pasifika Teacher Aide Project, Pacific Bilingual & Immersion Education PLD mo e fakaholoaga Tautai o le Moana).</p>



<p>2.1 Atiati hake mo e fakamalolo e tau takitaki ke he tau pepa fakaako ke lata mae totouaga ke he tau matatohi & tau fakatutalaaga ke he tau puhala uho ne tolu e fufuta: motu katoa, tau matakavi, mo e ke he tau tauteaga he tau fakaakoaga.</p>		
<p>2.1.1</p>	<p>Taute e totou ke he tau matatohi ke he motu & tau fakatutalaaga he tau takitaki he Te Poutāhū, lagomatai ki ai e taha matakau ne hataki mo e leveki ke he tau gahua nei ke tumau ke fakagahua mo e hikihiki e Common Practice Model.</p>	<p>Ha ha ki ai e tau paleko kehekehe ke he tau fakatokatokaaga ne kua lata ke fai tau mo e tauteaga e tau takitaki foou ke he tau fakatokatokaaga.</p>
<p>2.1.2</p>	<p>O moi mau e tau talahauaga, tufatufaaga ke he tau vala tala, mo e fakagahuahua ke he tau fakafetuiaaga ha ko e tau takitaki ke he motu pihia mo e tau atu motu mo e tau matakavi tata.</p>	
<p>2.1.3</p>	<p>Talaga hake e tau malolo ke he tau tagata gahua ha ko e tau atiati hake mo e fakagahuahua ke he tau koloa fakaaoga, tau lakau fakagahuahua, mo e tau fakaakoaga.</p>	
<p>2.1.4</p>	<p>Fakamaaliali e tau palana ke lata mae tau tagata gahua ke lagaki hake e tau gahua takitaki ke he tau puhala fakaako ke he totouaga he tau matatohi & tau fakatutalaaga kehekehe.</p>	
<p>2.2 Talaga mo e atiati hake e tau fakaakoaga pulotu ke lata mae gahuaaga ne onoono fakatonutonu ni ki ai, mafoefe mo e lautatai mo e Common Practice Model.</p>		
<p>2.2.1</p>	<p>Fakahu e tau puhala ne kua kumikumi ki ai ke he tau fakaakoaga pulotu mo e atiati hake (PLD), hagaao ia ke he Common Practice Model.</p>	<p>» Ke atihake ke fakatumau mo e ataina ke moua e PLD, tau faga foou mo e maeke ke hikihiki ne kua lata ke manamanatu fakalahi ki ai.</p>
<p>2.2.2</p>	<p>Fakatau-talaga mo e fakagahua e PLD ke lata mae faahi fakaako foou ke lagomatai ke fakagahuahua ke he tau lakau mo e tau koloa fakaaoga foou ne ha ha ki ai he Common Practice Model.</p>	<p>» Action 2.2.2 ke lautatai ke he ELAP 3.6: 'Ati hake taha puhala kua fakatumau mo e fakatokatoka ma e akoagamena mo e atihakeaga fakagahua.'</p>
<p>2.2.3</p>	<p>Foaki e tau koloa fakaaoga, tau hatakiaga, mo e tau lagomatai ke lata mae tau tagata pulotu ke he talagaaga he tau fakaakoaga ke uaaki ke atihake e tau mena iloa mo e fakaaogaaga ke he tau puhala ke atiati hake e tau makaka ke he tau fakaakoaga pauaki mae totouaga ke he tau matatohi.</p>	
<p>2.2.4</p>	<p>Talaga e taha PLD ne lalafi mo e fakatumau ke atihake e tau malolo he tau tagata gahua ne lagomatai atu ke he tau fakaakoaga mo e tau faiaoga lagomatai mae lagomataiaga ke he totouaga ke he tau matatohi & tau puhala fakatutalaaga kehekehe.</p>	
<p>2.3 Lalafi ki ai e Common Practice Model mo e tau puhala kehekehe lata mo e tau fakaakoaga, tau puhala fuafua aki mo e tau fakaakoaga ne fakaaoga oti he tau kautaha ITE.</p>		
<p>2.3.1</p>	<p>Gahua mo e tau kautaha ITE mo e Teaching Council ke fakamooli kua iloa oti he tau kau kua moua e tau ola e tau vala tala foou ke he Common Practice Model mo e tau lakau fakaaoga mo fuafua aki.</p>	<p>» Kua lalafi atu e tau mena nei ke he tau gahua kua fita e katama he Teaching Council.</p>
<p>2.3.2</p>	<p>Gahua mo e Teaching Council ke talaga e taha puhala lagomatai fakataitai ne fakamalolo atu ke he tau makaka kehe totouaga he tau matatohi & tau puhala fakatutalaaga kehekehe he tau faiaoga ke he ua e tau fakamua he tau fakaakoaga.</p>	

3

Focus Area 3: Tau matutakiaga fakaako malolo ne lagomatai mo e maali ke he tau fakaakoaga.

3.1	Lagomatai e tau fakaako fakamua mo e tau aoga ke gahua mo e tau magafaoa, iwi, mo e tau maaga ke he tau puhala ke taofi e tau aga fakamotu, ke fakahokulo e tau fakaakoaga ke he tau matatohi & tau puhala fakatutalaaga kehekehe he tau fanau aoga.	
3.1.1	Gahua auloa mo e tau magafaoa ke talaga mo e moua e ataina ke he tau koloo fakaakoaga mo e tau hatakiaga ne maeke ke lagomatai a lautolu ke eke mo tau kau fehagai malolo ke fakatolomaki e tau totouaga matatohi & tau puhala fakatutalaaga kehekehe he tau fanau aoga.	» Kua lata e tau gahua ke talaga hake he tau fakatai fakamua ne kua kitia kua mitaki mo e tau amanakiaga ne kua fita ki loto (tuga e, Reading Together, Talanoa Ako, and PELP resources) mo e lalafi ki ai e tau fakaakoaga mai he COVID-19.
3.1.2	Kumikumi ke he fafati pauaki mo e nakai fafati pauaki e tau feua ke atiati hake e totouaga ke he tau matatohi & tau puhala fakatutalaaga kehekehe.	» Ko e tau manako he tau kau ne moua e tau fakaakoaga faka-Peritania mo e ha lautolu a tau magafaoa to filiimanatu fakalahi ki ai.
3.1.3	Lagomatai e tau maaga mo e tau gahua ne takitaki he tau iwi ne lagomatai atu ke he tau magafaoa ke loto malolo ke fakafetui ke he tau fakaakoaga ke he tau matatohi & tau puhala fakatutalaaga kehekehe he ha lautolu a tau fanau aoga.	
3.2	Fakamaama fakamitaki e tau mena kua lata ke fahia ki ai he tau totouaga ke he tau matatohi mo e tau fakatutalaaga ke hokotia ke he tau puhala fakaako mo e tau gahua anoiha.	
3.2.1	Gahua mo e tau pule gahua mo e falu ke kitia mo e fakatutala e tau totouaga ke he tau matatohi & tau puhala fakatutala kehekehe mo e tau manako ha ko e tau mena nei ke lata mae tau fanau aoga ne amaamanaki ke oti mo e tau fakaakoaga mo e o atu ke he tau gahua.	» To moua he tau faiaoga e tau lagomatai ke fakahoko e tau vala tala nei ke he tau fanau aoga mo e ha lautolu a tau magafaoa he kamata foou he aoga tokoluga. » To lagomatai atu foki e tau fakaakoaga ke he tau gahua mo e School Leavers' Toolkit e tau mena nei.
3.2.2	Talaga e taha puhala gahua ne hataki mo e lagomatai ke he tau puhala fakaako – ke he fakaakoaga he kau ne moua e tau fakaakoaga mo e ha lautolu a tau magafaoa, pihia mo e tau faiaoga mo e tau takitaki aoga.	
3.3	Atiati hake e tau koloo, tau hatakiaga, mo e tau lakau ke toko aki e tau hokotaki fakatokatokaaga fakaako ke he tau magafaoa ke iloa e tau malolo he ha lautolu a tau fanau ha ko e taha vala ke taofi e tau malolo fakaako.	
3.3.1	Gahua mo e tau fakatokatokaaga fakaako mo e tau magafaoa ke atiati hake mau e tau hokotaki ke he tau malolo mo e tau ola moua.	» To liga maeke e gahua nei ke fakatolomaki ha ko e taha ke lalafi atu ke he tau fakamauga ke he tau fakaakoaga ne fano fakalataha mo e tama aoga, ne kua fita e atiati hake.
3.4	Lagomatai e tau hikihiakiaga mitaki ke lata mae tau fanau aoga mo e tau magafaoa, ke he tau faahi ne oti.	
3.4.1	O moi ke he tau faahi ne oti e kau fakalataha mo e fefakatutalaaki ke lagomatai e tau hikihiakiaga ke lata mae tau fanau aoga mo e ha lautolu a tau magafaoa.	» Ha ha i ai loga e tau hikihiakiaga ke lata mae tau fanau aoga mo e ha lautolu a tau magafaoa ka o atu he tau puhala fakaako katoa. Falu ia lautolu ne ha ha i ai ke he tau fakatokatokaaga (tuga e holo mai he tau fakaakoaga fakamua ke he aoga, poke holo heke he aoga tokoluga) mo e fai ne ha ha ki loto (tuga e hiki ke onoono fakalahi ke he tau fakaakoaga ni ke he aoga tokoluga).
3.4.2	Fakatumau ke gahua ke ati hake e taha School Entry Kete ke lagomatai aki e tau hikihiakiaga mitaki he tau fakaakoaga fakamua mo e tau aoga.	
3.4.3	Atiati hake mo e fakagahuhua e tau koloo hikihiaki ke lagomatai aki e tau magafaoa, tau fanau aoga, mo e tau faiaoga.	» Ko e kau fakalataha mo e kehekehe e tau tagata ne uho ke he tau lagomatai he tau fanau aoga, lalafi ki ai e tau magafaoa, iwi, mo e falu foki mai he maaga ne kua eke mo taha he tau kau lagomatai ke he tau fanau aoga.

3.5	Taofi e tau fakafetuiaga gahua mo e National Library ke fakaloaloa e tau fakafetuiaga mo e tau fakaakoaga ke he totouaga he tau matatohi & tau fakatutalaaga.	
3.5.1	Kau fakalataha mo e National Libray ke tatanaki hake ke he ha lautolu a tau fakatai ke fakamalolo aki e tau fakaakoaga ke totou ke he tau matatohi & tau fakatutalaaga he maaga mo e tau fakatokatokaaga, mo e ke o moi e mouaaga he tau magaaho ke totou ke he puhala mai he tua gahua mo e tau feua totou matatohi & tau puhala fakatutalaaga kehekehe.	» Tatanaki hake he tau feua kua fita e mau ai mo e tau gahua kua fakatokatoka (tuga e Pūtoi Rito Community of Readers). » To moua mai he tau mena nei e taha magaaho ke fakaholo atu e tau fakaakoaga ki fafo he tau mena fa mahani ke fakaako ki ai mo e fakafetui e tau magafaoa ke he tau puhala foou, muaatu ke he okioki loa he vaha mafana. » Fakalataha ke fakaakoaga e tau koloo gahua mo e tau puhala ne tuku mai he National Library, mo e kumikumi e talagaaga he kau foou.





Focus Area 4: Ko e tau puhala lagomatai ke he tau fakaakoaga ne tali atu ke tau manako he tau fanau aoga oti

4.1	Talaga e taha puhala gahua ne ha ha i ai e tau puipui haohao mitaki ke lata mae tau fanau aoga he o atu he tau aoga.	
4.1.1	Atiati hake e taha puhala holo mitaki mo e lautatai e tau puipui haohao mitaki ne lagomatai atu ke he tau fanau aoga ke fifili mai mo e tuku age e tau lagomatai foki ke lata mae tau fakaakoaga.	» To holo ki mua e tau gahua ha ko e tau kumikumiaga ke lago ki ai e tau puipui haohao mitaki he tau fakaakoaga.
4.1.2	Fakakite e tau manatu uho ka kitia ka holo ki mua kua lata e tama aoga ke fai lagomatai foki kua lata ke moua.	» Lalafi ki ai e tau fifiliaga he tau manatu ke he matagahua he School Entry Kete mo e tau manako he tau fanau aoga ne fae hagao atu ke he tau poakiaga he NCEA.
4.1.3	Fakamaaliali e ataaina ke moua e lagomatai, fakahagahagamitaki e tama aoga aki e tau lagomatai kua lata ke he tau tau moui oti.	» To fili manatu atu foki ke he matagahua he Learning Support Coordinator ke potapota e tau vala tala mo e kumikumi ke he tau puhala foki ke lalafi ki ai e tau lagomatai ne liga kua tatai ke he tau tagata oti, onoono fakalahi ni ki ai, poke lata ni mo e tokotaha.
4.2	Liu kitekite, atiati hake mo e hikihi e tau lagomatai lalafi ke lata mae tau totouaga ke he tau matatohi & tau puhala fakatutalaaga kehekehe he tau lagomatai moua he o he hala fakaako, mo e fakamooli kua fakatatai ke he Common Practice Model.	
4.2.1	Fakalautatai e tau fakamole ha ko e tau lalafi atu ke he tau fakaakoaga ke he tau matatohi ke fakakite ko e heigoa ne gahua mitaki.	» To maeke he mena nei ke filimanatu ke he tau manako he o atu he tau hala ke he tau fakaakoaga, mo e kitia e mahuiga he kitia tuai mo e tali atu ke he tau manako (ha kua o tatai mo e tau priorities 2 mo e 3 he <i>Learning Support Action Plan</i>). Ko e liu kitekite ke he tau lagomatai ne kua fita e fai to putoia ki ai e:
4.2.2	Liu kitekite mo e fakamalolo e tau gahua mo e tau gahuahuaaga he Resource Teacher of Literacy.	» kumikumiaga he lauiaaga he Oral Language Literacy Initiative mo e taute ke moua mukamuka he kamataaga he tau fakaakoaga
4.2.3	Tuku e tau lagomatai lalafi mae tau fanau aoga mai he tau aoga ne tuga mai to nakai kautu ke he tau poakiaga he NCEA.	» hikihi e Reading Recovery mo e Early Literacy Support ke o tatai mo e tau hatakiaga ne moua mai he tau kumikumiaga mau
4.2.4	Talaga e tau magaaho ke lata mae tau lagomatai ha ko e tau kumikumiaga mo e tau puhala ke he totouaga he tau matatohi & tau puhala fakatutalaaga kehekehe.	» liu kitekite ke he Accelerating Learning in Literacy » fakamalolo e tau fakamailoga mo e tuputupu e tau malolo ke gahua ke moua e tau lagomatai ke he tau faahi ne oti he totouaga ke he tau matatohi, lalafi ki ai e tau vagahau fakaleo. » To filimanatu e tau lagomatai ke he tau manako kehekehe he tau fanau aoga, lalafi ki ai e tau filimanatu ke he tau manako ne lauia ki ai foki ke he falu a tau faahi foki. » Ko e Literacy and Numeracy Support in Schools ko e taha tauteaga ne ha ha i ai ke he magaaho nei (2021/22) ke lagomatai ke he matakau fakamua he tau fanau aoga ke taute e tau poakiaga he NCEA.

4.3	Atiati hake e tau lagomatai ha ko e tau kumikumiaga ne mailoga e tau malolo ke he tau manamanatuaga ne kua kehe mai he laulahi he tau fanau aoga (tuga e, dyslexia, dysgraphia, dyspraxia, gifted).	
4.3.1	Fakamalolo e tau ati hake he tau makaka he tau tagata gahua ke maama e tau manamanatuaga kehekehe mo e lagomatai ke he tau manako he tau fanau aoga oti, lalafi ki ai a lautolu ne moua he dyslexia.	» To fakakite he gahua e maamaaga ko e heigoa ne gahua mai he kitiaaga he Maui mae kanorau ā-roto neurodiversity.
4.3.2	Kumikumi fakamakutu ti fakailoa ke he tau magafaoa, tau aoga, mo e tau aoga fakamahani ke he tau tekenolo hila (takete) mo e tau tekenolo lagomatai (toko taha) tau fakatokatokaaga ke lagomatai aki e totou ke he tau matatohi & tau puhala fakatutalaaga kehekehe.	» Fakakite e tau manako mo e tau lagomatai ka fakamalolo mo e onoono fakalahi ke he tali fakataitai (nakai ko e talahauaga he lekua). » Nakai tatai e tau ataina ke he tau puhala ke kitia mo e fifili e tau manako he tau fanau aoga ne kehekehe e tau puhala manamanatu ke lagomatai. » Ko e taha fifiliaga manatu ke foaki age ke iloa ko e lagaki hake fefe e puhala ke moua e tau lakau hila ha ko e taha vala a ia ke lagomatai ke moua e tau puhala ne nakai tiaki a taha ke uta aki e tau fakaakoaga. » Matutaki ke he tau mena nei, kua fakaakoaga fakataitai a mautolu he tau afi fakatutalaaga ke lata mae tau fanau aoga he Year 2-8 ne manako ke moua foki e taha lagomatai ke fakaako ke totou. Ko e tau afi to maeke ke iloa e tau gagao, mahino, puhala gahua, mo e tupu. To talaga e lautolu e taha iloaaga ke he tau fakaleo kehekehe, ko e tau poakiaga alafapete, ai kanau, pulotu ke he tau kupu vagahau, mo e makaka ke maama. » Lalafi ki ai e gahua ke liu kitekite ki ai mo e fakafoou e tau koloa ne nakai ko e tau koloa he faahi gahua he Ikipule ki loto he Literacy Online Dyslexia Resource Kete ke he tau magaaho kua lata.

Focus Area 5: Ko e tau puhala fuafuaaga laulahi ne lagomatai ke he taha puhala gahua ne moua e fakaakoaga

5.1	Liu kitekite mo e atihake e tau lakau fakaaga ke he tau fuafuaaga ke lata mae tau aoga.	
5.1.1	Hakahaka mo e atihake e tau puhala mitaki ne kua hataki mai ke he tau lakau fakaaga mo e tau puhala gahua he tau fale aoga ne o tatau mo e Common Practice Model.	<ul style="list-style-type: none"> » Lalafi ki ai e tau gahua ke atihake e School Entry Kete ke lagomatai ke mitaki e hiki ke he aoga, mo e fakafoou e-asTTle aki e taha koloa fuafua ne lata tonu mo e o tatau ke he NZC ne kua fakafoou mo e tau fakaholoaga foou. » Fai manatu ka foaki age ke he amanakiaga ki mua ke lata mae artificial intelligence mo e 'smart insights' ke lagomatai ke pogoti e vaha ha kua nakai lautatai, fakaholo ki mua e gahuahua mitaki, mo e tuku hifo e tau gahua he faiaoga. » To fakatokatoka e tau lalafiaga kua lata mo e tau fakamauga ke he tau fakaakoaga, ka e fakatumau ke mahani fakamooli e tau fuafuaaga mitaki.
5.2	Talaga e taha puhala fuafua ke onoona ke he holo mitaki he tau puhala fakagahua mo e taute e tau hikihikiaga ke leveki aki e puhala gahua anoia.	
5.2.1	Atihake e taha puhala kumikumi ke onoona ke he tau vaha ne kitaia ke he ha tautolu a tau puhala fakaako ne tau atu ke he tau talahauaga he tau kumikumiaga.	<ul style="list-style-type: none"> » Ko e taha onoonaaga ne kua tumau mo e fakatokatoka ne kua manako ke kumikumi ke maeke ha tautolu a tau puhala gahua ke toloomaki ki mua, lalafi ki ai e tau totouaga ke he tau matatohi hila mo e puhala ka tali atu ke he tau aga motu ne fakagahuahua ke lata mo e tau fanau aoga ne kehekehe.
5.2.2	Gahua mo e falu ke leveki mo e fuafua e tau lauia he Literacy & Communication Action Plan (mua atu ke he tau fanau aoga Maui, Pasifika, mo e tau fanau aoga ne lalafi atu e tau manako ke he falu fakaakoaga foki).	<ul style="list-style-type: none"> » Ko e tau fakamooli mai he tau atu motu kehe kua lata ke fakatauo mo e tau talahauaga mo e tau vala tala kua moua ke he tau magaaho mitaki, mauokafua, mo e tuaha mitaki mo e fai kakano uho ke he takatakaimotu i Aotearoa Niu Silani.
5.2.3	Fakailoa mo e tufatufa e tau vala tala mo e tau talahauaga hagai ke he totouaga he tau matatohi & tau puhala fakatutalaaga kehekehe, fakaakoaga, mo e fuafua puhala ke he Online Curriculum Hub foou mo e falu foki ne foou mo e kua fita e fai ke he tau fakafetuiaga gahua.	<ul style="list-style-type: none"> » Ka gahua fakalataha e ofisa Ikipule mo e Education Review Office mo e fakafoouaga he National Monitoring Study of Student Achievement to maeke ke hoko atu ke tau vala tala mahuiga hagai ke he gahuahuaaga mitaki he tau puhala gahua. » Ko e talagaaga he tau koloa fakaaga, hatakiaga, mo e tau lakau fakaaga to fai hikihikiaga he tau magaaho ka mole atu mo e tali atu ke he tau kumikumiaga mo e fakamooli ke tumau e taute pauaki mae fekau.



Kitekiteaga ke he tau puhala gahua iloilo mae Totou Numela⁵

FOCUS AREA 1

- 1.1** Fakafoou e tau fakaakoaga ke he totou numela ne fakamaama ke he NZC.
- 1.2** Hukui e Learning Progression Frameworks mo e Literacy Learning Progressions mo e taha fakaholoaga ki mua ke lata mae aoga ne fakakite e fakaatuatu he fakaakoaga mae totouaga ke he tau numela, ha ko e taha vala he Common Practice Model.
- 1.3** Atihake e tau koloa fakaaoga mo e tau hatakiaga ke lagomatai e faiaoga ke maama mo e tau fakakia ke he fakaholo ki mua he tau fanau aoga he tau numela ke he tau fakaakoaga fakamua, ha ko e taha vala he Common Practice Model.
- 1.4** Atihake e tau hatakiaga ke fakaako fefe e totouaga ke he tau numela he aoga, ha ko e taha vala he Common Practice Model.
- 1.5** Leveki ke mau e fakaakoaga ke he numela mo e fakaako ke talahau e tula.

FOCUS AREA 2

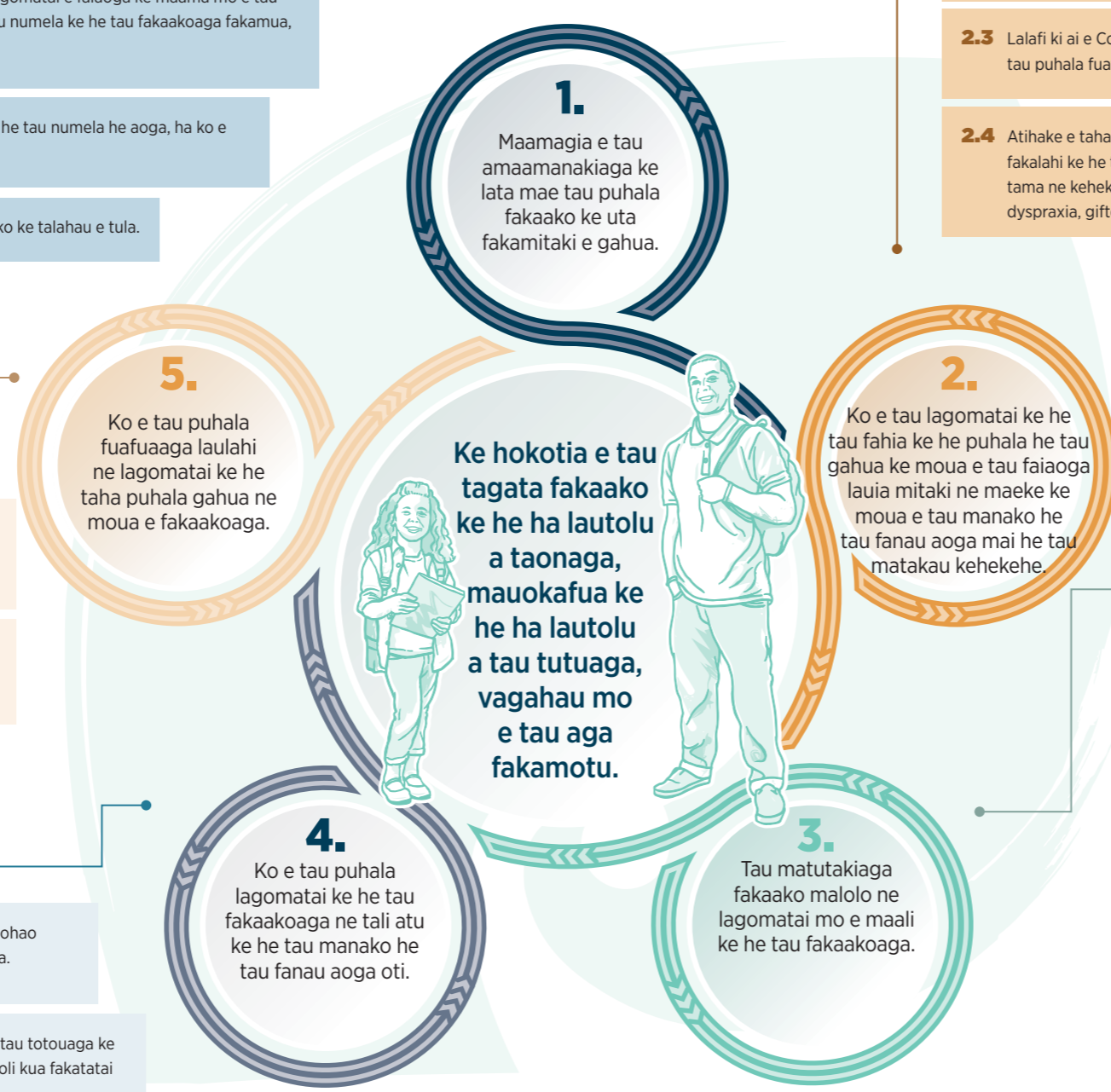
- 2.1** Tatanaki hake mo e fakamalolo e tau takitaki ke he tau pepa fakaako ke lata mae totouaga ke he tau numela ke he tau puhala uho ne tolu e fufuta: motu katoa, tau matakavi, mo e ke he tau fakatokatokaaga he tau mena ne taute ki ai e tau fakaakoaga.
- 2.2** Talaga mo e tatanaki hake e tau fakaakoaga pulotu ke lata mae gahuaaga ne ono fakahako ni ki ai, molulu mo e lautatai mo e Common Practice Model.
- 2.3** Lalafi ki ai e Common Practice Model mo e tau puhala kehekehe lata mo e tau fakaakoaga, tau puhala fuafua aki mo e tau fakaakoaga ne fakaaoga oti he tau kautaha ITE.
- 2.4** Atihake e taha kau gahua pauaki ne makaka lahi ke moua mai e tau lagomatai ne onoono fakalahi ke he tau tama taki taha ne manako lahi ke moua e lagomatai, lalafi ki ai e tau tama ne kehekehe e tau malolo ke he tau fakaakoaga (tuga e, dyscalculia, dyslexia, dyspraxia, gifted).
- 2.5** Fakaohoho mo e fakatupu e tau kau gahua ne fakaako ke he totou numela aki e tau tauia mitaki, tau fakaakoaga mo e tau puhala gahua ne kua mitaki mai.

FOCUS AREA 5

- 5.1** Liu kitekite mo e atihake e tau lakau fuafua ne mahino mitaki ke lata mae tau aoga.
- 5.2** Talaga e taha puhala fuafua ke onoono ke he holo mitaki he tau puhala fakagahua mo e taute e tau hikihihiaga ke leveki aki e puhala gahua anoia.
- 5.3** Atihake e taha fakaakoaga ne moua mai ha ko e tau kumikumiaga ke lata mae tau fakaakoaga ke he totou numela, tau iloaga mo e tau fuafua ke he tau malolo he o he hala.

FOCUS AREA 4

- 4.1** Talaga e taha puhala gahua ne ha ha i ai e tau hapo haohao mitaki ke lata mae tau fanau aoga he o atu he tau aoga.
- 4.2** Talaga mo e atihake e tau lagomatai lalafi ke lata mae tau totouaga ke he tau numela ke he tau puhala fakaako, mo e fakamooli kua fakatatai ke he Common Practice Model.



FOCUS AREA 3

- 3.1** Lagomatai ke he tau fakaakoaga fakamahani mo e tau aoga ke gahua mo e tau magafaoa, iwi mo e tau maaga, he tau puhala ke taofi e tau aga fakamotu, ke fakahokulo e tau fakaakoaga ke he tau totou numela he tau fanau aoga.
- 3.2** Taute ke maama e tau malolo ne kua lata mae tau fakaakoaga hokulo ke he totou numela mo e tau gahua.
- 3.3** Tatanaki hake e tau koloa fakaako, tau hatakiaga, mo e tau koloa ke lagomatai ke he tau fakatokatokaaga he tau fakaakoaga ne fae hokotaki ke he tau magafaoa ke iloa kua fefe e tau fakaakoaga ha lautolu a tau fanau ha ko e taha vala ia ke taofi pihia.
- 3.4** Lagomatai e tau hikihihiaga mitaki ke lata mae tau fanau aoga mo e tau magafaoa, ke he tau faahi ne oti ne fakatokatoka ki ai.
- 3.5** Lagaki e iloaga he papiliki ke he mahuiga lahi he totou numela mo e tau monuina ka moua mai ha ko e tau fakaakoaga uho ke he totou numela.

⁵ Mailoga e tau taimi he falu a tau gahua to tua ki ai ke lata mae tau tupe moua ke he tau magaaho i mua mo e tau fifiliaga ke he tau mata fakatufono.



Focus Area 1: Maamagia e tau amaamanakiaga ke lata mae tau puhala fakaako ke uta fakamitaki e gahua

1.1	Fakafoou e tau fakaakoaga ke he totou numela ne fakamaama ke he NZC.	
1.1.1	Fakafoou e tau fakaakoaga ke he totou numela ne fakamaama he NZC ke moua e taha puhala ne mahino mitaki mo e lalafi ki ai ke lata mae tau totou numela ke he tau faahi ne oti he tau fakaakoaga, mo e tau fakaakoaga ke he tau faahi totou numela & totouaga ke he tau numela mae tau kumikumiaga.	» Ka fakafoou e NZC to fakafoou e faahi fakaako ke he totou numela & totouaga ke he tau numela mae tau kumikumiaga, lalaga e tau holo ki mua e totou numela ke he tau faahi fakaako ne oti, ke fakalilifu mo e lopoti mai e Treaty. Ko e tau hikihikiaga ne lalafi ki ai ke: » tamai e falu he tau fakaakoaga totou numela ne fa fakaako ke he tau tau i mua ke he Years 0-3 ke maeke he tama aoga ke hokotia ke he tau fakaakoaga ne kua amanaki ki ai
1.1.2	Fakamahino mo e fakakite kua lata lahi e totou numela ke he tau malolo tino, faahi gahua, mo e tuaga tonuhia ke he motu ai nei ato hoko kia anoia.	» lalaga e tau fakaakoaga ne ha ha ki ai he tau fakatokatokaaga fakaako ke iloa ko e ha ne fakaaoga e tau lakau totou numela mo e atiati hake fefe ke he tau magaaho kua mole, mo e fakafetuiaga he totou numela mo e aga fakamotu (ethnomathematics), mo e onoono fakalahi ke he te ao Māori mo e mana ōrite mō te mātauranga Māori » fakamooli kua nakai fai fili agamotu ne ha ha ki ai he tau fakaakoaga » ko e matakau pulotu ke kumikumi ke he tau fakatokatokaaga ke he tau fakaakoaga ki lalo hifo he kave totou numela he level 7 mo e 8 he NZC, mo e fili manatu ko e laulahi mooli nakai e tau mena ne kua fakafeveveia mo e tau fanau aoga.
1.1.3	Tatanaki hake e Common Practice Model ke lago ki ai e NZC ne kua fakafoou mo e tupu hake e maama mo e lautatai mitaki ke he tau fakaakoaga mo e tau gahua fakamahani ke lata mae totouaga ke he tau matatohi & tau fakatutalaage kehekehe ke he faahi fakaako.	
1.2	Hukui e Learning Progression Frameworks mo e taha fakaholoaga ki mua ke lata mae aoga ne fakakite e fakaatuatu he tau fakaakoaga mae totouaga ke he tau numela, ha ko e taha vala he Common Practice Model.	
1.2.1	Liu kitekite mo e liu tatanaki e Learning Progression Frameworks ke fakakite maali e fakaatuatu he tau fakaakoaga mae totouaga ke he tau numela.	» Ko e taha fakaholoaga ki mua ne lahi e tau talahauaga ki ai to moua mai e maamaaga mo e tau fakatai ke lagomatai e faiaoga ke maama e puhala ke fakaholo ki mua, tau sitepe uho ke moua e tau fakaakoaga, mo e tau iloaaga ke he tau kaupaga ne kua lata ia lautolu ke tuku mata ki ai ke he tau faahi fakaako ne oti, ha ko e taha vala he Common Practice Model.
1.2.2	Fakatumau fakamalolo e totouaga ke he tau numela mo e tau iloaaga ha ko e taha vala he tau hikihikiaga he NCEA, lalafi ki ai e tau fakagahuahua he taha vahega foou ne kua lata ke taute mae totouaga he tau numela.	» Manamanatu ki ai e gahua he School Entry Kete ke moua mai e fakatino he tau malolo he tau fanau aoga he magaaho ka kamata e aoga ha lautolu ke kumi mo e moua e ha lautolu a puhala ke hu atu ke he fakaholoaga ki mua ne foou. » Ko e hukui ke he tau fakaholo ki mua he tau fakaakoaga to lagomatai ke he faiaoga ke fai fifiliaga kua mau nakai e tau fanau aoga ke taute e tau fuafuaaga ke he tau vahega NCEA ne kua lata ke taute mae totouaga he tau numela.

1.3	Atihake e tau koloa fakaaoga mo e tau hatakiaga ke lagomatai e faiaoga ke maama mo e tau fakakite e fakaholo ki mua e tau fanau aoga he tau numela ke he tau fakaakoaga fakamua, ha ko e taha vala he Common Practice Model.	
1.3.1	Fakalaulahi e tau fakamooliaga ke kitia ko e fefe e fofoga ka tolomaki ki mua e totou numela he tau fakaakoaga fakamua, lalafi ki ai ko e lagomatai fefe he atihakeaga he leo vagahau he holo ki mua, mo e ko e gahua mua atu e mitaki ke lagomatai ke atihake he fakatokaaga numela fakamua ke fakailoa ke he Common Practice Model e tau fakaakoaga fakamua.	» Kua lagomatai e mena nei he gahua 4.1 he <i>Early Learning Action Plan</i> (ELAP): 'Gazette e fakaholoaga mae tau fakaakoaga, <i>Te Whāriki</i> , ke lagomatai aki e tau fakafetuiaga mo e tau manatu uho, tau kave, tau amanakiaga mo e tau mena moua he magaaho ka tatanaki e tau fakaakoaga mae matakavi.' » Fakalautatai foki e mena nei ke ELAP 4.2: 'Fakatau-talaga e tau koloa fakaaoga ne iloa kua hako, maeke ke tuaha ki ai, hakahako ke he tau aga fakamotu mo e tau leo vagahau.'
1.3.2	Tatanaki hake e tau lakau mo e tau koloa fakaaoga mae tau fakaakoaga fakamua ke lagomatai e faiaoga ke maama mo e fakamooli ke he fakaholoaga ki mua he tau fakaakoaga fakamua he tau fanau aoga (lafi ki ai e social-emotional learning (SEL), leo vagahau, mo e totou ke he tau numela), ko e taha vala he Common Practice Model.	» Ko e tau koloa fakaaoga to lalafi ki ai e taha onoonaaga hokulo ke he te ao Māori mo e mana ōrite mō te mātauranga Māori.
1.3.3	Lagomatai ke he tau fakagahuahua he tau koloa mo e tau lakau fakaako he Common Practice Model mo e tau gahua ne foaki he Te Poutāhū.	» Kua fakamatafeiga he tau kumikumiaga e tau matutakiaga malolo ha SEL mo e fakaakoaga ke he leo vagahau mo e totou numela.
1.4	Atihake e tau hatakiaga ke fakako fefe e totouaga ke he tau numela he aoga, ha ko e taha vala he Common Practice Model.	
1.4.1	Atihake e taha NZC Maths Teaching, Assessment and Learning Guide ne lalafi e tau puhala ne kua fita e kumikumi fakalaulahi ke he tau fakaakoaga mo e fakako ke he totou numela.	» Ko e tau hatakiaga mo e tau koloa ke lagomatai aki e tau manatu fiofio mo e fekehekeheaki ke he falu magaaho ha ko e tau puhala ne mua ke fakako ke he totou numela ke maeke e faiaoga ke moua e taha fakatino maali mo e maama.
1.4.2	Atihake mo e fakatai fakamua e taha fakaholoaga puke mai he taha matapotu ke he taha matapotu ke fakako ke lata mae tau aoga ne o fakatatai mo e Common Practice Model mo e moua mai e tau sitepe fakaatuatu ke he tau logonaaga he tau fakaakoaga ke lata mae tau fanau aoga he Years 0-10.	» To lalafi ke he tau hatakiaga e mahuiga he tama aoga ke fakalataha ke he tau logonaaga fakako kehekehe, lalafi ki ai: tau poakiaga fakaatuatu mitaki mo e mahino, tau puhala iloilo ke fakamahani, tau magaaho ke o atu mo e kumikumi, mo e fakatutala mo e fakatonutonu e tau manatu ha ko e taha vala a ia he kumikumiaga he maaga.
1.4.3	Fakafoou mo e talaga fakafoou e tau fakatokatokaaga ke he tau koloa fakako ke kitia ke he Common Practice Model mo e tau fakamooliaga ha kua tupu e kumikumiaga hakaaga ke he tau lalafiaga mo e taofiaga he tau mahani aga motu.	» Ko e tau hatakiaga ke he tau tatanaki pauaki ke kehekehe to lagomatai aki e faiaoga ke fakaoiti e tau mouaaga kelea mai he kupega hila mo e tau fakaaogaaga he feua fakamahani mo e tau matakau.
1.4.4	Atiati hake taha Strategic Leadership Guide ke lata mae tau takitaki ne fakatokatoka e tau fakaakoaga, matakau fono, mo e tau matakau takitaki ke fakaaoga mau e Common Practice Model.	» Ko e tau hikihikiaga ke he tau fakataitai gahua to fakamooli kua maeke e tau takitaki ke hiki mo e talaga e tau puhala hikihiki ke lata mae tau manako he maaga. » Ko e tau koloa fakaaoga to lalafi ki ai e taha onoonaaga hokulo ke he te ao Māori mo e mana ōrite mō te mātauranga Māori.

2

Focus Area 2: Ko e tau lagomatai ke he tau fahia ke he puhala he tau gahua ke moua e tau faiaoga lauia mitaki ne maeke ke moua e tau manako he tau fanau aoga mai he tau matakau kehekehe

1.4.5	Atihake e taha kumikumiaga hagai ke he tau fakaaoaga mitaki he tau koloa ne maeke ke hikihiki mo e tau koloa ne fakaaoaga ke maali e tau fakaaoaga mo e tau mena iloa, mo e haohao mitaki e tau tupe fakaaoaga ke maeke ke moua e tau koloa nei ke lata mae tau fakaaoaga.	<ul style="list-style-type: none"> » Ko e tau hatakiaga ka manamanatu mo e filifi ke he tau puhala kua talia ha ko e tau kumikumiaga gahua mitaki ke lata mae tau manako kehekehe he tau fanau aoga, lalafi ke he tau filimanatu ke he tau fanau aoga ne veveheua mo e kehekehe e tau manako. » Ko e tau hatakiaga ka filimanatu ke he tau manako kehekehe he tau fanau aoga ke he laulahi he tau fakaaoaga mo e tau iloaaga ke he tau faahi fakaako he tau numela mo e tau fakaaoaga he tau numela ke lata mae tau kumikumiaga.
1.5 Leveki ke mau e fakaaoaga ke he numela mo e fakaako ke talahau e tula.		
1.5.1	Ko e Math Teaching Assessment and Learning Guide ne lalafi ki ai e hatakiaga mo e magaaho ku ne fakaaoaga ke fakaako mo e iloa e totou numela he taha e faahi tapu he aoga.	» Ko e tau fakamooli ke he magaaho nei ne fakakite kua lahi mahaki e kehekehe ke he tau magaaho ne fakaako ke he totou numela mo e tau fakaaoaga oti he NZC.
1.5.2	Ko e Strategic Leadership Guide to moua mai e tau hatakiaga ke lata mae tau puhala kehekehe ke leveki aki e tau fakaaoaga totou numela mo e magaaho ke fakaako ki ai.	» Kua lata ke filimanatu ke he tau puhala kehekehe ke leveki aki e tau fakaaoaga ke he totou numela mo e magaaho ke fakaako ki ai.



2.1 Atihake mo e fakamalolo e takitakiaga ke he tau fakatokatokaaga he tau fakaaoaga mae totou numela ke he tolu e puhala uho: motu katoa, tau matakavi tata mai, mo e ke he tau fakatokaaga ke moua e tau fakaaoaga.		
2.1.1	Fakatoka mai tau takitaki ke he totou numela (muaatu ke he lalafiaga he tau numela) he Te Poutāhū, lagomatai ki ai e taha matakau ne hataki mo e leveki ke he tau gahua nei ke tumau ke fakagahua mo e hikihiki e Common Practice Model.	<ul style="list-style-type: none"> » Ha ha ki ai e tau paleko kehekehe ke he tau fakatokatokaaga ne kua lata ke fai tau mo e tauteaga e tau takitaki foou ke he tau fakatokatokaaga. » Fai ke he falu he tau aoga e tau takitaki ne fakatokatoka e tau fakaaoaga ke he totou numela, ne nakai fai tumau ke he tau lagomatai ke he talagaaga he tau fakatokatokaaga ke he tau fakaaoaga he maaga, moua e tau lagomatai mai he taha ke he taha, matutaki e tau fakaaoaga mo e tau magafaoa, iwi, mo e maaga, mo e o moi ke he tau maamaaga ne tatai mo lautolu e tau takitaki ke he tau fakatokatokaaga he tau fakaaoaga. » Ke he tau aoga ne iiki to liga lata ke fakafeheleaki e tau gahua mo e tuku hake e tua atu ke he tau takitaki ne fakatokatoka ke he tau fakaaoaga he tau matakavi tata.
2.1.2	O moi mau e tau talahauaga, tufatufaaga ke he tau vala tala, mo e fakagahuahua ke he tau fakafetuiaga ha ko e tau takitaki ke he motu pihia mo e tau matakavi tata.	
2.1.3	Talaga hake e tau malolo ke he tau tagata gahua ha ko e tau atiatihake mo e fakagahuahua he tau koloa fakaaoaga, tau lakau fakagahuahua, mo e tau fakaaoaga.	
2.1.4	Fakamaaliali e tau palana ke lata mae tau tagata gahua ke lagaki hake e tau gahua takitaki ke he tau puhala fakaako ke he totouaga he tau numela.	
2.1.5	Taute e tau pu gahua takitaki he tau aoga tokoluga ke fakatokatoka e tau fakaaoaga totou numela, mo e kakano uho ke lagomatai ke he tau faiaoga he tau vahega ne kehe mai he totou numela ke maeke ke fakaako ke he totou numela mo e lagomatai ke o moi fakalahi ke tolmaki ki mua e tau fakaaoaga.	
2.2 Talaga mo e atiatihake e tau fakaaoaga pulotu ke lata mae gahuaaga ne onono fakatonutonu ni ki ai, mafoefe mo e lautatai mo e Common Practice Model.		
2.2.1	Tatanaki tokoua e taha fakatai fakaako ne iloa ke he totou numela he aoga katoa (PLD) ke holo mitaki e malolo he faiaoga ke fakaako, ke onono fakalahi ke he tau aoga ne lalahi mahaki e tau manako.	<ul style="list-style-type: none"> » Ke talaga ke fakatumau mo e ataina ke moua e PLD, tau faga foou mo e maeke ke hikihiki ne kua lata ke manamanatu fakalahi ki ai. » Ha ha i ai e manako ke fakaloaloa e PLD ne fakamatafeiga ke he atiatihake he tau pulotu fakaaoaga kehekehe he faiaoga mo e ha lautolu a tau maamaaga ke he totouaga he tau matanumela, ne maeke ke moua fakahako he faiaoga he magaaho ka manako ki ai. » Action 2.2.2 ke lautatai ke he ELAP 3.6: 'Ati hake taha puhala kua fakatumau mo e fakatokatoka ma e akoagamena mo e atihakeaga fakagahua.'
2.2.2	Fakatau-talaga mo e fakagahua e PLD ke lata mae faahi fakaako foou ke lagomatai ke fakagahuahua ke he tau lakau mo e tau koloa fakaaoaga foou ne ha ha ki ai he Common Practice Model, lafi ki ai e tau hatakiaga foou ke iloa e tau puhala ke fakaleo mo e tufatufa e tau fakaaoaga ke he tau numela.	
2.2.3	Fakahu e tau puhala ne kua kumikumi ki ai ke tau PLD, hagai ia ke he Common Practice Model.	
2.2.4	Talaga e taha PLD ne lalafi mo e fakatumau ke atihake e tau malolo he tau tagata gahua ne lagomatai atu ke he tau fakaaoaga mo e tau faiaoga lagomatai mae lagomataiaga ke he totouaga ke he tau numela.	



Focus Area 3: Tau matutakiaga fakaako malolo ne lagomatai mo e maali ke he tau fakaakoaga

2.3 Lalafi ki ai e Common Practice Model mo e tau puhala kehekehe lata mo e tau fakaakoaga, tau puhala fuafua aki mo e tau fakaakoaga ne fakaoga oti he tau kautaha ITE.		
2.3.1	Gahua mo e tau kautaha ITE mo e Teaching Council ke fakamooli kua iloa he tau kau kua moua e tau ola e tau vala tala foou mo e maama ke he Common Practice Model mo e tau lakau fakaoga mo fuafua aki.	» Kua lalafi atu e tau mena nei ke he tau gahua kua fita e katama he Teaching Council.
2.3.2	Gahua mo e Teaching Council ke talaga e taha puhala lagomatai fakataitai ne fakamalolo atu ke he tau makaka kehe totouaga he tau numela he tau faiaoga ke he ua e tau fakamua he tau fakaakoaga.	
2.4 Atihake e taha kau gahua pauaki ne makaka lahi ke moua mai e tau lagomatai ne onono fakalahi ke he tau tama taki taha ne manako lahi ke moua e lagomatai, lalafi ki ai e tau tama ne kehekehe e tau malolo ke he tau fakaakoaga (tuga e, dyscalculia, dyslexia, dyspraxia, gifted).		
2.4.1	Ko e fakatai ke he Tau Fakaholoaga Liu Kitekite mae tau Fanau Fakaako Faiaoga Pulotu Totou Numela (Review Programmes for Students Maths Specialist Teachers) mo e tau tupe foaki lagomatai aki e tau faiaoga ke fakapuke e tau lagomatai ke tau kau fakaako ke he totouaga he tau numela mo e tau gahua takiaki ke he tau fakatokaaga ke he tau fakaakoaga.	» Ko e tau faiaoga ne kua fita e ha ha i ai to moua e tau omoiaga mo e tau lagomatai ke atihake ha lautolu a tau iloaaga ke he tau puhala fakaako kehekehe mo e maamaaga ke he tau numela.
2.4.2	Omoi e tau faiaoga ke fakaako ke eke mo tau pulotu ke he tau numela ne kua omoi ke fai mitaki hake e tau gahuaaga mo e tau magaaho ke moua e tau fakaakoaga.	
2.4.3	Talaga e tau magaaho ke moua e tau fakaakoaga mo e PLD ne lagomatai atu ke he faiaoga ke pulotu lahi he tau gahuaaga ne maeke ke tolmaki ki mua ke lata mae tau fanau aoga kehekehe, lalafi ki ai a lautolu ne kehekehe e tau puhala manamanatu.	
2.5 Fakaohoho mo e fakatupu e tau kau gahua ne fakaako ke he totou numela aki e tau tauiaaga mitaki, tau fakaakoaga mo e tau puhala gahua ne kua mitaki mai.		
2.5.1	Liu talaga e tau lagomatai ke lagomatai e tau gahua ke lata mae tau faiaoga kua moua ka e nakai la katoatoa e tau laupepa (provisionally certificated teachers) mo e tau faiaoga ne kua fakaako ke taha motu kehe ke lalafi e taha ononoaga fakalahi ke he tau fakaakoaga ke he totou numela mo e fakaakoaga ne lautatai mo e Common Practice Model.	» Ko e tau kau gahua ne onono ki mua ne kua lata ke fakakite e tau kehekehe he tau tagata ha Aotearoa Niu Silani. » Kua fakakite he tau fakaohohoaga malolo nei ne fae fakaoga kaeke ke lalafi ki ai e tau leo ha lautolu ne kua manako ke hoko ki ai mo e fakaoga he tau fakaohohoaga foou to liga toko loga atu ka hu atu.
2.5.2	Foaki e tau hataki ke lagomatai e tau faiaoga fakatonutonu ke atihake e tau maamaaga PCT ke he totou numela mo e tau pulotu ke he tau fakaakoaga kehekehe, ne lautatai mo e Common Practice Model.	
2.5.3	Liu kitekite mo e talaga e taha puhala fakatokatoka iloilo ke fakaohoho ke tau fanau kua moua e tau ola mo e tau pulotu ke fakaako ke eke mo tau faiaoga.	

3.1 Lagomatai ke he tau fakaakoaga fakamahani mo e tau aoga ke gahua mo e tau magafaoa, iwi mo e tau maaga, he tau puhala ke taofi e tau aga fakamotu, ke fakahokulo e tau fakaakoaga ke he tau totou numela he tau fanau aoga.		
3.1.1	Gahua auloa mo e tau magafaoa ke talaga mo e moua e ataina ke he tau koloa fakaoga mo e tau hatakiaga ne maeke ke lagomatai a lautolu ke eke mo tau kau fehagai malolo ke fakatolomakie tau totouaga matanumela he tau fanau aoga.	» To fakamooli he gahua ke fai puhala ne toka ai ke tufatufa e tau koloa fakaoga mo e hatakiaga ke he tau magafaoa ke he tau fakatokatokaaga ke he tau fakaakoaga, tau lagomatai ke he tau magafaoa, mo e ke he kupega hila. » Kua lata he gahua ke atiatu hake ke he tau fakatai ne kua kautu mo e tau tauteuteaga ne kua fita ki loto, lalafi ki ai e tau kitiaaga mai he kau ne kua fita e moua mafola ke he tau totouaga.
3.1.2	Te Mahau (https://temahau.govt.nz) ka lagomatai e tau matutakiaga matakavi mo e gahua auloa ke atihake mo e fakatupu e tau tauteaga foou he maaga mo e iwi ne lagomatai ke fakatupu e totou matanumela mo e tau logonaaga, muaatu ke he tau fanau aoga Mauli mo e tau Pasifika.	
3.1.3	Foaki hatakiaga ke he tau Resource Teachers Learning and Behaviour (RTLBs) ke iloa ko e lagomatai fakamitaki ke he tau agaaga mitaki ke he tau matanumela mo e tau takatakai vahega mitaki ke fakaako ke he totouaga he tau numela.	
3.2 Taute ke maama e tau malolo ne kua lata mae tau fakaakoaga hokulo ke he totou numela mo e tau gahua.		
3.2.1	Gahua mo e tau pule gahua mo e falu ke kitia mo e fakatutala e tau totouaga ke he tau matanumela mo e tau manako ha ko e tau mena nei ke lata mae tau fanau aoga ne amaamanaki ke oti mo e tau fakaakoaga mo e o atu ke he tau gahua.	» Ko e tau fakaakoaga ke he tau gahua to maeke ke lagaki hake e tau iloaaga mo e tau fia iloa he tau fanau aoga ke he tau puhala monuina he totouaga ke he tau matanumela.
3.2.2	Talaga e taha puhala gahua ne hataki mo e lagomatai ke he tau puhala fakaako – ke he fakaogaaga he tau fanau aoga mo e ha lautolu a tau magafaoa, pihia mo e tau faiaoga mo e tau takitaki aoga.	
3.2.3	Gahua tokoua mo e magafaoa, iwi, mo e tau maaga ke atihake e tau lagomatai mo e tau fakaohohoaga ne omoi ke he tau fakaakoaga ne monuina ke he tau totouaga he tau matanumela mo e tau puhala ke he tau gahua ko e tau fanau aoga Mauli mo e tau Pasifika.	



Focus Area 4: Ko e taha puhala lagomatai ke he tau fakaakoaga ne tali atu ke he tau manako he tau fanau aoga oti

3.3	Tatanaki hake e tau koloa fakaako, tau hatakiaga, mo e tau koloa ke lagomatai ke he tau fakatokatokaaga he tau fakaakoaga ne fae hokotaki ke he tau magafaoa ke iloa kua fefe e tau fakaakoaga ha lautolu a tau fanau ha ko e taha vala ia ke taofi pihia.	
3.3.1	Gahua mo e tau fakatokatokaaga fakaako mo e tau magafaoa ke atiati hake mau e tau hokotaki ke he tau malolo mo e tau ola moua.	» To liga maeke e gahua nei ke fakatolomaki ha ko e taha ke lalafi atu ke he tau fakamauaga ke he tau fakaakoaga ne fano fakalataha mo e tama aoga, ne kua fita e atiati hake.
3.4	Lagomatai e tau hikihihiaga mitaki ke lata mae tau fanau aoga mo e tau magafaoa, ke he tau faahi ne oti.	
3.4.1	O moi ke he tau faahi ne oti e kau fakalataha mo e fefakatutalaaki ke lagomatai e tau hikihihiaga ke lata mae tau fanau aoga mo e ha lautolu a tau magafaoa.	» Ha ha i ai loga e tau hikihihiaga ke lata mae tau fanau aoga mo e ha lautolu a tau magafaoa ka o atu he tau puhala fakaako katoa. Falu ia lautolu ne ha ha i ai ke he tau fakatokatokaaga (tuga e holo mai he tau fakaakoaga fakamua ke he aoga, poke holo heke he aoga tokoluga) mo e fai ne ha ha ki loto (tuga e hiki ke onoono fakalahi ke he tau fakaakoaga ni ke he aoga tokoluga). » Ko e kau fakalataha mo e kehekehe e tau tagata ne uho ke he tau lagomatai he tau fanau aoga, lalafi ki ai e tau magafaoa, iwi, mo e falu foki mai he maaga ne kua eke mo taha he tau kau lagomatai ke he tau fanau aoga.
3.4.2	Fakatumau ke gahua ke ati hake e taha School Entry Kete ke lagomatai aki e tau hikihihiaga mitaki he tau fakaakoaga fakamua mo e tau aoga.	
3.4.3	Atiati hake mo e fakagahuahua e tau koloa hikihihi ke lagomatai aki e tau magafaoa, tau fanau aoga, mo e tau faiaoga.	
3.4.4	Talaga tokoua mo e atihake e tau koloa totou numela mae tau fanau aoga mo e magafaoa ne nonofo fakaku mo e/poke fai vihuaga ke tau fakaako totou ke he tau matanumela.	
3.5	Lagaki e iloaaga he papiliki ke he mahuiga lahi he totou numela mo e tau monuina ka moua mai ha ko e tau fakaakoaga uho ke he totou numela.	
3.5.1	Atihake e taha feua fakaohoho he motu ke lagaki aki e fofoga mo e mahuiga he tau numela uka mo e totou ke he tau numela mo e tau numela fakaaga ha ko e tau kumikumiaga mae tau tagata Niu Silani oti.	» To lalafi ki ai e onoonoaga fakalahi ke he tau fanau aoga Maui mo e ha lautolu a tau magafaoa, mo e fanau aoga mai he Pasifika mo e ha lautolu a tau magafaoa.

4.1	Talaga e taha puhala gahua ne ha ha i ai e tau puipui haohao mitaki ke lata mae tau fanau aoga he o atu he tau aoga.	
4.1.1	Atiati hake e taha puhala holo mitaki mo e lautatai e tau puipui haohao mitaki ne lagomatai atu ke he tau fanau aoga ke fifili mai mo e tuku age e tau lagomatai foki ke lata mae tau fakaakoaga.	» To holo ki mua e tau gahua ha ko e tau kumikumiaga ke lago ki ai e tau puipui haohao mitaki he tau fakaakoaga. » Lalafi ki ai e tau fifiliaga he tau manatu ke he matagahua he School Entry Kete mo e tau manako he tau fanau aoga ne fae hagao atu ke he tau poakiaga he NCEA. » To fili manatu atu foki ke he matagahua he Learning Support Coordinator ke potapota e tau vala tala mo e kumikumi ke he tau puhala foki ke lalafi ki ai e tau lagomatai ne liga kua tatai ke he tau tagata oti, onoono fakalahi ni ki ai, poke lata ni mo e tokotaha.
4.1.2	Fakakite e tau manatu uho ka kitia ka holo ki mua kua lata e tama aoga ke fai lagomatai foki kua lata ke moua.	
4.1.3	Fakamaaliali e ataina ke moua e lagomatai, fakahagahagamitaki e tama aoga aki e tau lagomatai kua lata ke he tau tau moui oti.	
4.2	Talaga mo e atihake e tau lagomatai lalafi ke lata mae tau totouaga ke he tau numela ke he tau puhala fakaako, mo e fakamooli kua fakatai ke he Common Practice Model.	
4.2.1	Atihake e taha kumikumiaga mo e tau fakamooli ke lata mae puhala fakaholo ki mua he tau totouaga mitaki he tau numela, mo e fakaaoga ke talaga aki e taha fakatai lalafi atu e tau lagomatai ke he totou numela mae tau fanau aoga ne o atu he puhala fakaako.	» To maeke he mena nei ke filimanatu ke he tau manako he tau fanau aoga ne o atu he tau hala ke he tau fakaakoaga, mo e kitia tuai e mahuiga mo e tali atu ke he tau manako (ha kua o tatai mo e tau priorities 2 mo e 3 he <i>Learning Support Action Plan</i>). To moua mai he tau mena kua fita e fakaako ki ai mai he tau lagomatai kua fita e moua, lalafi ki ai e Accelerating Learning in Mathematics mo e tau fakaholoaga Mathematics Support Teacher. » Ne ha ha i ai ke magaaho nei gahoa e tau lagomatai ke he tau numela mo e totou numela, mo e to fai magaaho ka mole ke talaga mo e fakagahua e taha lagomatai fakatai ne maeke ke feleveia mo e tau manako lalahi he o atu katoatoa he puhala he tau fakaakoaga. » Ko e tau lagomatai katoatoa to mailoga mo e tali ke he tau manamanatuaga kehekehe he tau fanau aoga. » To filimanatu e tau lagomatai ke he tau manako kehekehe he tau fanau aoga, lalafi ki ai e tau filimanatu ke he tau manako ne lauia ki ai foki ke he falu a tau faahi foki. » Ko e Literacy and Numeracy Support in Schools ko e taha tauteaga ke he magaaho nei (2021/22) ke lagomatai ke he matakau fakamua he tau fanau aoga ne taute e tau poaki-aga he NCEA. » Ko e tau kumikumiaga ke he tau lauiaaga ha ko e fakaaoga he tau puhala ne tuku e tau tama aoga ke he tau matakau mo e fifili ni ke he tau malolo lotomatala ati kitia kua lata lahi e tau lagomatai ke moua ke he tau poko aoga.
4.2.2	e tau gahua pauaki ke he tau aoga ke fakaako e tau fakaakoaga talaga pauaki ke fakatolomaki ki mua e tau fakaakoaga, mo e onoono fakalahi ke lagomatai ke he tau fanau aoga ne kehekehe e tau puhala manamanatu (lalafi ki ai a lautolu he moua he dyscalculia) mo e tau fanau aoga ne ligaliga ke nakai koutu ke moua e tau poakiaga he NCEA.	
4.2.3	Tuku e tau lagomatai lalafi mae tau fanau aoga mai he tau aoga ne tuga mai to nakai koutu ke he tau poakiaga he NCEA.	
4.2.4	Talaga e tau magaaho ke lata mae tau lagomatai ha ko e tau kumikumiaga mo e tau puhala ke he totouaga ke he tau matanumela.	

Focus Area 5: Ko e tau puhala fuafuaaga laulahi ne lagomatai ke he taha puhala gahua ne moua e fakaakoaga

5.1	Liu kitekite mo e atihake e tau lakau fakaaoga ke he tau fuafuaaga ke lata mae tau aoga.	
5.1.1	Hakahaka mo e atiami hake e tau puhala mitaki ne kua hataki mai ke he tau lakau fakaaoga mo e tau puhala gahua mae tau fale aoga ne o tatau mo e Common Practice Model.	<ul style="list-style-type: none"> » Lalafi ki ai e tau gahua ke atiami hake e School Entry Kete ke lagomatai ke mitaki e hiki ke he aoga, mo e fakafoou e-asTTle aki e taha koloa fuafua ne lata tonu mo e o tatau ke he NZC ne kua fakafoou mo e tau fakaholoaga fooou. » Fai manatu ka foaki age ke he amanakiaga ki mua ke lata mae artificial intelligence mo e 'smart insights' ke lagomatai ke pogoti e vaha ha kua nakai lautatai, fakaholo ki mua e gahuahua mitaki, mo e tuku hifo e tau gahua he faiaoga. » To fakatokatoka e tau lalafiaga kua lata mo e tau fakamauga ke he tau fakaakoaga, ka e fakatumau ke mahani fakamooli e tau fuafuaaga mitaki.
5.2	Talaga e taha puhala fuafua ke onoono ke he holo mitaki he tau puhala fakagahua mo e taute e tau hikihihiaga ke leveki aki e puhala gahua anoiha.	
5.2.1	Gahua mo e falu ke leveki mo e fuafua e tau lauiaaga he Maths Action Plan ke he tau totouag ke he matanumela (mua atu ke he tau fanau aoga Maui, Pasifika, mo e tau fanau aoga ne lalafi atu e tau manako ke he falu fakaakoaga foki).	<ul style="list-style-type: none"> » Ko e tau fakamooli mai he tau atu motu kehe ne kua lata ke fakatau o mo e fakaaoga mitaki ke he tau magaaho, mauokafua e tau talahauaga, tuaha atu ke he tau fakamauga mo e tau vala tala ne lata tonu ke he takatakai motu ko Aotearoa Niu Silani.
5.2.2	Fakailoa mo e tufatufa e tau vala tala mo e tau talahauaga hagaa ke he totouaga he tau matanumela, fakaakoaga, mo e fuafua puhala ke he Online Curriculum Hub fooou mo e falu foki ne fooou mo e kua fita e fai ke he tau fakafetuiaaga gahua.	<ul style="list-style-type: none"> » Ka gahua fakalataha e ofisa Ikipule mo e Education Review Office mo e fakafoouaga he National Monitoring Study of Student Achievement to maeke ke hoko atu ke tau vala tala mahuiaga hagaa ke he gahuahuaaga mitaki he tau puhala gahua. » Ko e talagaaga he tau koloa fakaaoga, hatakiaga, mo e tau lakau fakaaoga to fai hikihihiaga he tau magaaho ka mole atu mo e tali atu ke he tau kumikumiaga mo e fakamooli ke tumau e taute pauaki mae fekau.
5.3	Atihake e taha fakaakoaga ne moua mai ha ko e tau kumikumiaga ke lata mae tau fakaakoaga ke he totou numela, tau iloaaga mo e tau fuafua ke he tau malolo he o he hala.	
5.3.1	Atiami hake e taha puhala kumikumi ke onoono ke he tau vaha ne ha ha i ai kehe tau kumikumiaga.	<ul style="list-style-type: none"> » Ko e taha onoonoaga ne tokamau mo e fakatokatoka mitaki ne kua lata ke he tau kumikumiaga ke fakatumau ke o moi ki mua e tau puhala gahua ha tautolu, lalafi ki ai e mātauranga Māori, tau puhala ne fakaaoga he tau tagata Pasifika ke iloa, mo e onoono ke he vehaloto he tau aga fakamotu mo e tau numela.
5.3.2	Kamata e taha potaaga tupe atihake ke fakatupu aki e tau takitakiaga ke he tau fakatokaaga fakaakoaga, talaga e taha maamaaga auloa ke he tau puhala gahua aoga, mo e fakailoa e tau iloaaga mo e tau fakamooliaga Te Poutāhū.	





**Te Tāhuhu o
te Mātauranga**
Ministry of Education

**Te Kāwanatanga
o Aotearoa**
New Zealand Government

[education.govt.nz](https://www.education.govt.nz)