



**Te Poutāhū**  
Curriculum Centre

# Te au Action Plan no Te Literacy & Communication e te Maths

‘AUKUTE I TE MATA’ITI 2022



**Te Tāhuhu o  
te Mātauranga**  
Ministry of Education

**Te Kāwanatanga  
o Aotearoa**  
New Zealand Government

# Tei roto ake nei

<b>'Aka'ārāvei'anga</b>	<b>5</b>
<b>Te au Tu'anga e Rima, te Tāto'u'ia nei i raro ake i te au Action Plan</b>	<b>6</b>
<b>Te au mea pu'apinga no te tā'anga'anga'anga i te au Action Plan</b>	<b>8</b>
Te 'akamātūtū'anga i te literacy & communication e te maths, na roto i te katoa'anga o te kaveinga .....	8
Te 'akatupu'anga i te Common Practice Model .....	8
Te 'ākara'anga matatio i te au turanga, e te au turu e vai nei .....	8
Te rave'anga i te 'anga'anga, kia rauka te turanga tāmou'anga 'āpi'i .....	8
<b>Te au 'ātuitui'anga pu'apinga i roto i te turanga 'āpi'i</b>	<b>9</b>
<b>Te Common Practice Model</b>	<b>10</b>
Te 'akataka'anga .....	10
Te rāvenga no te 'akatupu'anga i te Common Practice Model .....	11
Te au 'akaneke'anga ki mua (progressions), o te Literacy & communication, e te numeracy nekeneke'anga ki mua (progressions) .....	11
<b>Te tāmārumaru'anga o te kaveinga no te rave'anga (actions), i te Literacy &amp; Communication</b>	<b>12</b>
Tu'anga Tāto'u'anga 1 .....	14
Tu'anga Tāto'u'anga 2 .....	17
Tu'anga Tāto'u'anga 3 .....	18
Tu'anga Tāto'u'anga 4 .....	20
Tu'anga Tāto'u'anga 5 .....	22
<b>Te tāmārumaru'anga i te kaveinga no te rave'anga (strategic actions) i te Maths</b>	<b>24</b>
Tu'anga Tāto'u'anga 1 .....	26
Tu'anga Tāto'u'anga 2 .....	29
Tu'anga Tāto'u'anga 3 .....	31
Tu'anga Tāto'u'anga 4 .....	33
Tu'anga Tāto'u'anga 5 .....	34

Nene'ī'ia e te Māraurau o te 'Āpi'i o Aotearoa, 'Aukute i te mata'iti 2022.  
Mātauranga House, 33 Bowen Street  
PO Box 1666, Thorndon  
Wellington 6140, New Zealand.

[www.education.govt.nz](http://www.education.govt.nz)

Crown copyright © 2022

ISBN 978-1-77697-013-1 (Te mea tātā'ia)  
ISBN 978-1-77697-014-8 (Tei runga i te 'ātuitui roro uira)

# ‘Aka‘ārāvei‘anga

I roto ia Māti, i te mata‘iti 2022, kua ‘ai te Minita Tauturu o te Māraurau o te Pae ‘Āpi‘i, a Jan Tinetti, i te *Literacy & Communication* e te *Maths Strategy* (te Kaveinga). Te ‘ākara nei te Strategy, i te au mea e anoano‘ia nei i roto i ta tatou turanga ‘āpi‘i, i te ‘akapu‘apinga‘anga atu i te tāvini‘anga i ta tatou au tauira, na roto i te ‘āpi‘i punanga, e te ‘āpi‘i. Te ‘akatanotano‘ia nei teta‘i turanga tau, no te pu‘āpi‘i e te au arataki, kia turu‘ia, kia kite, e kia rave i te au rāvenga tau no te au anoano tūkētūkē o te tauira, kia rauka te au rāvenga tātakita‘i, kia neke ki mua, e kia pu‘apinga i roto i te literacy & communication, e te maths <sup>1</sup> E pu‘apinga to teia au tu‘anga ki te au tauira katoatoa, i te ‘anga‘anga‘anga, e te tomo‘anga ki roto i to ratou turanga ‘āpi‘i, e te ‘iti tangata, e kia tupu ta ratou moemoeā no ratou ‘uā‘orāi, e to ratou au ‘oire tangata.

Ka ‘akamata to tatou teretere‘anga ki te au mea tau, e te pu‘apinga rava atu, na roto i te ‘akairo‘anga i te au tauī‘anga pu‘apinga e anoano‘ia nei, i te ‘akamātūtū i te ‘āpi‘i‘anga, te tāmou‘anga ‘āpi‘i, e te vāito‘anga i roto i te literacy & communication, e te maths. Te ‘akapapa atu nei te au Action Plan, o te Literacy & Communication, e te Maths (te au Action Plan) i te au taka‘i‘anga takataka meitaki, ka rave matou, na roto i te au mata‘iti e tu mai nei, kia tupu te ‘ōrama o te Strategy. Te rave‘ia nei teia au ‘anga‘anga na roto i te au kite, e te karape, tei tuku‘ia mai e te turanga ‘āpi‘i, e teta‘i atu au ta‘unga, e te aronga ‘inangaro i te turanga ‘āpi‘i, i te tuātau ‘uipā‘anga‘anga no runga i te Strategy.

Te ‘akapapa atu nei te au Action Plan, i te au taka‘i‘anga mātūtū, i te ‘akatakataka‘anga i te turanga ‘ārikiriki, te au rāvenga ‘āpi‘i‘anga tei ‘akairo‘ia te pu‘apinga, te ‘akamātūtū‘anga i te au turanga turuturu te āru ra i te kaveinga tukatau; te ‘akapu‘apinga‘anga atu i te ‘anga‘anga ta‘okota‘i i rotopu i te au turanga ‘āpi‘i, e te kōpu tangata, iwi, e te au ‘oire tangata; e te tanu‘anga i te au turuturu‘anga tau no te tāmou‘anga ‘āpi‘i, e te au rāvenga vāito i te tauturu i te pu‘āpi‘i kia kite, e kia rave i te au mea tau no te anoano o te tauira. Ka ‘inangaro‘ia teta‘i rāvenga ‘akatanotano‘ia no teia ‘anga‘anga, no reira te au Action Plan i ‘ātu‘ia ei, ki te ‘anga‘anga ma‘ata atu na runga i te kaveinga e arataki‘ia nei e Te Poutāhū | Curriculum Centre. Tei roto i teia, te ‘aka‘ōu‘anga i Te New Zealand Curriculum (NZC), te au tauī‘anga ki te NCEA (mei te literacy ‘ōu, e te numeracy co-requisites), e te tā‘anga‘anga‘ua‘anga atu rāi i te Early Learning Action Plan.

Tei runga te pu‘apinga o te au Action Plan, i te ‘irinaki‘anga ta‘okota‘i, i te ‘akapu‘apinga‘anga i te ka rauka i te au tauira katoatoa, e to ratou au kōpu tangata, ratou tikāi, kare i ‘akono meitaki ia ana i roto ake i to tatou turanga. Ka ‘ōronga‘ia te au rāvenga no te ‘akatanotano‘anga i te ‘akapapa‘anga, e te tā‘anga‘anga‘anga i te au ‘anga‘anga tūkētūkē, ia tatou e neke nei ki mua, ma te ‘irinaki e, kua tau ki te au anoano o te ‘oire tangata, e te au turanga. Te rekareka nei matou i te tautā‘anga ta‘okota‘i no teia au ‘akakoro‘anga, ia tatou e ‘akaora ‘aka‘ōu nei i te mataora o te literacy & communication, e te maths, i roto i ta tatou tauira, e no ta tatou pu‘āpi‘i.

Tei runga teta‘i atu ‘akakitekite‘anga no runga i te Strategy, ki te pae i teia au Action Plan, i ta matou kupenga uira:

<https://www.education.govt.nz/literacy-and-communication-and-maths-strategy>

<sup>1</sup> Te tā‘anga‘anga‘ia nei te ‘Maths’ i roto i te Strategy, e te au Action Plan ei tuatua ‘akako‘u‘anga tumu manako, te au karape, te au kite, te au mārama‘anga tei ko‘uko‘u mai i te au turanga pouroa o te numeracy, mathematics, e te statistics.

# Te au Tu'anga e Rima, te Tāto'u'ia nei i raro ake i te au Action Plan

Kua kite matou e, e mānganui ua atu te au tu'anga te ka tutuki ki runga i te 'āpi'i'anga, e te tāmou'anga 'āpi'i, e te au 'akakoro'anga. Kare e na teta'i tauī'anga 'okota'i ua, e 'ōronga i te tauī'anga pu'apinga e anoano'ia nei, no te literacy & communication, e te maths. Mei tei 'akano'ono'o'ia i raro ake i nga Tuanga Tāto'u'anga e rima, te āru nei matou i te rāvenga o te turanga 'akapapa'ia ki raro ake i teta'i tumu-manako 'okota'i, i te tā'anga'anga'anga i te Strategy, e te tauturu a te Kavamani na roto i te pūtē-moni, i te 'akaneke'anga i ta matou au 'irinaki'anga pu'apinga ki mua.

Ka 'akaneke marie ua matou i te au 'anga'anga na roto i te rima mata'iti e tu mai nei, i te 'akapāpu meitaki, e kia rauka te tauī'anga i te 'aka'aere, ka 'akano'ono'o meitaki ia te au 'anga'anga, e kia rava te tuātau no te 'anga'anga ta'okota'i kia pu'apinga.<sup>2</sup> Te 'akakoro'ia nei te au 'anga'anga pouroa i te 'akapāpu, kia autu te au taura katoatoa, kia tukatau i roto i to ratou 'uā'orāi turanga, au reo, e ta ratou au 'ākono'anga/peu. Kua 'akano'ono'o'ia teia au 'anga'anga ki raro ake i nga Action Plan e rua: 'okota'i no te literacy & communication, e 'okota'i no te maths. 'Āiteite ua te ma'ata'anga o te 'anga'anga strategic no nga Action Plan e rua, māri ra, te vai ra teta'i pae, no teta'i anake. Te 'akamārama atu nei te au 'akako'uko'u'anga o te au 'akakoro'anga tātakita'i o te au Tu'anga Tāto'u'ia, i raro ake nei, no te literacy & communication, e te maths.

## TU'ANGA TĀTO'U'ANGA 1:

**Te au 'irinaki'anga takataka no te 'āpi'i'anga, e te tāmou'anga 'āpi'i, i te arataki i te 'āpi'i' pu'apinga**

Ko te 'aka'ārāve'i'anga i teta'i mārama, no runga i te critical literacy & communication, e te maths skills, e te kite, ka anoano te taura, te 'akakoro'anga ma'ata o te Tu'anga Tāto'u'anga 1. Tei roto i teia, te 'anga'anga e rave'ia nei e te NZC refresh, i te 'akatakataka i te au mea ka anoano'ia ki roto i te literacy & communication, e te maths, no te au tu'anga tāmou'anga 'āpi'i' pouroa. Ka 'akatupu matou i te Common Practice Model (tei 'akatakataka'ia i runga i te au **kāpi 10-11**) i te 'ōronga i te arataki'anga pu'apinga, no runga i te rāvenga 'āpi'i'anga tau i te literacy & communication, e te maths, mei te 'āpi'i' punanga ki te Mata'iti 'Āpi'i' 13. Te 'akatupu katoa nei matou i te au rāvenga 'āpi'i'anga, e te arataki'anga, i te turu meitaki i te pu'āpi'i, e te taura, e pērā katoa, i te taura no roto mai i te au peu/'ākono'anga, e te reo tūkētūkē. Ka tukatau i reira te pu'āpi'i, i te turu'anga i te au taura katoatoa, kia neke ki mua, e kia manuia, te 'āite'anga o teia au 'anga'anga (actions).

<sup>2</sup> 'Akamatakite'anga, tei runga ua te rave'ia'anga teta'i o teia au 'anga'anga, i te turanga o te pūtē-moni o te tuātau ki mua, e te au 'iki'anga no runga i te papa-ture.

## TU'ANGA TĀTO'U'ANGA 2:

**Te turu'anga pu'apinga i te kaveinga o te pu'āpi'i, kia mātūtū i roto i te tauturu i te anoano o te au pupu taura tūkētūkē**

Ko te taomi'anga i te turu tei 'akairo'ia e ka pu'apinga (evidence informed), no te au pu'āpi'i e te au arataki i roto i te literacy & communication, e te maths, na roto i te au 'akano'ono'o'anga tamou 'āpi'i, i roto i te au vaka, e te basileia, te 'akakoro'anga ma'ata atu o te Tu'anga Tāto'u'anga. Tei roto i teia te 'akamātūtū'anga i te kite, te ta'okota'i'anga i te au 'ātuitui'anga, te au turu pu'apinga, e te au rāvenga terēni'anga no te au pu'āpi'i, e te au arataki, e pērā katoa te 'ōronga'anga i te professional learning and development (PLD) e te Initial Teacher Education (ITE) tei tau ki te Common Practice Model. Ka 'akamātūtū atu teia i te pu'āpi'i, e ko te 'aite'anga i reira, ka meitaki atu ratou i te 'āpi'i'anga i ta ratou au taura.

## TU'ANGA TĀTO'U'ANGA 3:

**Te au 'ātui'anga pakari i roto i te turanga 'āpi'i, te turu ra, e te 'akapu'apinga atu i te tāmou'anga 'āpi'i**

Ko te turu e te 'akamātūtū atu i te 'anga'anga'anga ta'okota'i i rotopu i te au ngā'i tāmou'anga 'āpi'i, e te kōpu tangata, te iwi, e te au 'oire tangata, kia rauka mā mā mai te pu'apinga no te au taura, te 'akakoro'anga ma'ata atu o te Tu'anga Tāto'u'anga 3. Tei roto i teia, te aruaru'anga i te au nekeneke'anga meitaki no te taura (na roto i te au 'akano'ono'o'anga e te au kaveinga) e te 'akapu'apinga'anga atu i te au rāvenga ripōti'anga, e te komakoma'anga ki te kōpu tangata. Ka 'akatupu teia, i teta'i turanga 'āpi'i, tei 'ātui'ia ki te au 'oire tangata o ta ratou 'āpi'i, e te tauturu i te taura te anoano ra i te au rāvenga tūkētūkē.

## TU'ANGA TĀTO'U'ANGA 4:

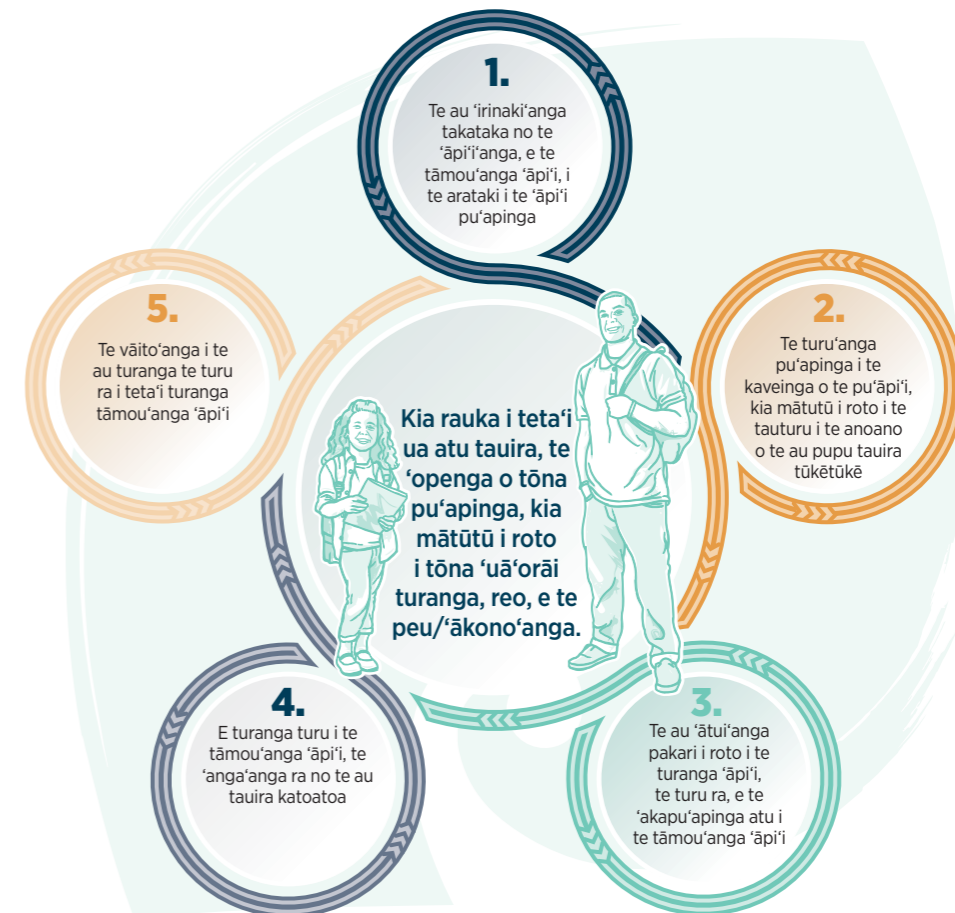
**E turanga turu i te tāmou'anga 'āpi'i, te 'anga'anga ra no te au taura katoatoa**

Ko te 'akapāpu'anga e, te kite putupu'ia ra te anoano tūkētūkē o te taura, te mārama'ia ra, e te 'āpi'i'ia ra. Tei roto i teia, te 'ākara'anga matatio i te au turuturu'anga e vai nei, i te 'akapāpu e, te tau ra ki te Common Practice Model, e te 'akatupu'anga i teta'i turanga tau, tei 'akatanotano'ia no te turu'anga i te anoano tūkētūkē o teta'i anake, na roto i to ratou teretere'anga 'āpi'i. Ko te 'āite'anga i teia i reira, ka tau no te au taura katoatoa, te turu'anga tau i te taime tau, kia pu'apinga ratou i roto i te au turanga tauturu pāruu-kore.

## TU'ANGA TĀTO'U'ANGA 5:

**Te vāito'anga i te au turanga te turu ra i teta'i turanga tāmou'anga 'āpi'i**

Ko te 'akapāpu'anga e, kua 'akatinamou'ia te au high-quality assessment practices and tools, na roto i te turanga, e te pakari ra te au feedback loops, kia rave putupu'ia ua ia atu rāi te 'akapu'apinga'anga. Tei roto i teia, te 'ākara'anga matatio i te au rāvenga vāito'anga e rave'ia nei, na roto i te ara 'āpi'i, i te 'akapāpu e, te tau ra ki te Common Practice Model, e te 'akatupu'anga i ta matou au rāvenga vāito, e te kimikimi'anga kite. Ka 'aka'ārāve'i atu teia au taka'ā'anga, i te au assessment practice and tools, te ka 'ōronga mai i te au kite pu'apinga, i te turu i te pu'āpi'i kia kite, e kia rave i te au mea tau, no te anoano, e te au mea 'inangaro'ia, e te taura, e to ratou kōpu tangata. Ka 'aka'ou'ia te au kite te turu ra i te 'āpi'i'anga tau, e te arataki'anga tau, te ka rauka i teta'i ua atu i te rave, na roto i Aotearoa.



# Te au mea pu'apinga no te tā'anga'anga'anga i te au Action Plan

## Te 'akamātūtū'anga i te literacy & communication, e te maths, na roto i te katoa'anga o te kaveinga

Te rave takere ia nei te 'anga'anga, no runga i te 'āpi'i punanga, e te kaveinga o te 'āpi'i'anga, no runga i teta'i au 'anga'anga pu'apinga, te 'akakoro'ia ra, i te 'akapāpu kia rauka i te au tauira katoatoa, te tāmou'anga 'āpi'i pu'apinga rava atu, te turu ra ia ratou i te neke'anga ki mua, e kia 'autu i roto i te au tu'anga pu'apinga. Tei roto i teia, te 'akatupu'anga i te au practice and progress tools no te 'āpi'i' punanga, te 'aka'ou'anga i *The New Zealand Curriculum*, e te rave'anga i te NCEA co-requisites no te literacy, e te numeracy.

## Te 'akatupu'anga i te Common Practice Model

E taka'i'anga pu'apinga teia i te 'akapāpu, kia tau te au pu'āpi'i e te au arataki i te tāvini'anga i te tauira, e to ratou kōpu tangata. Ka 'akatopa mai teia i te turanga 'ēkōkō i roto i te 'āpi'i'anga, e te tāmou'anga i te literacy & communication, e te maths, na roto i te 'akatupu'anga i te 'āpi'i'anga, te arataki'anga, e te au rāvenga vāito'anga tau, e te mātūtū. Na te Common Practice Model, e 'akatakataka meitaki e, ko te tāmou'anga 'āpi'i' pu'apinga rava atu, e ko te au rāvenga 'āpi'i'anga pu'apinga rava atu, e te tau, no te au anoano tūkētūkē, e te 'inangaro o te tauira. Na roto i te 'akapu'apinga'anga i teia, e riro mai ei te turu'anga pu'apinga atu no te au pu'āpi'i e te au arataki, i te 'āpi'i'anga, e te tāmou'anga 'āpi'i' tukatau, na roto i te turanga 'āpi'i' punanga, e te au 'āpi'i, i te 'ōronga i te literacy & communication, e te maths, ki ta ratou au tauira. 'Ākara'ia **te kapi 10-11** no teta'i atu tuatua no runga i te Common Practice Model.

## Te 'ākara'anga matatio i te au turanga tauturu e vai nei, e te au turu.

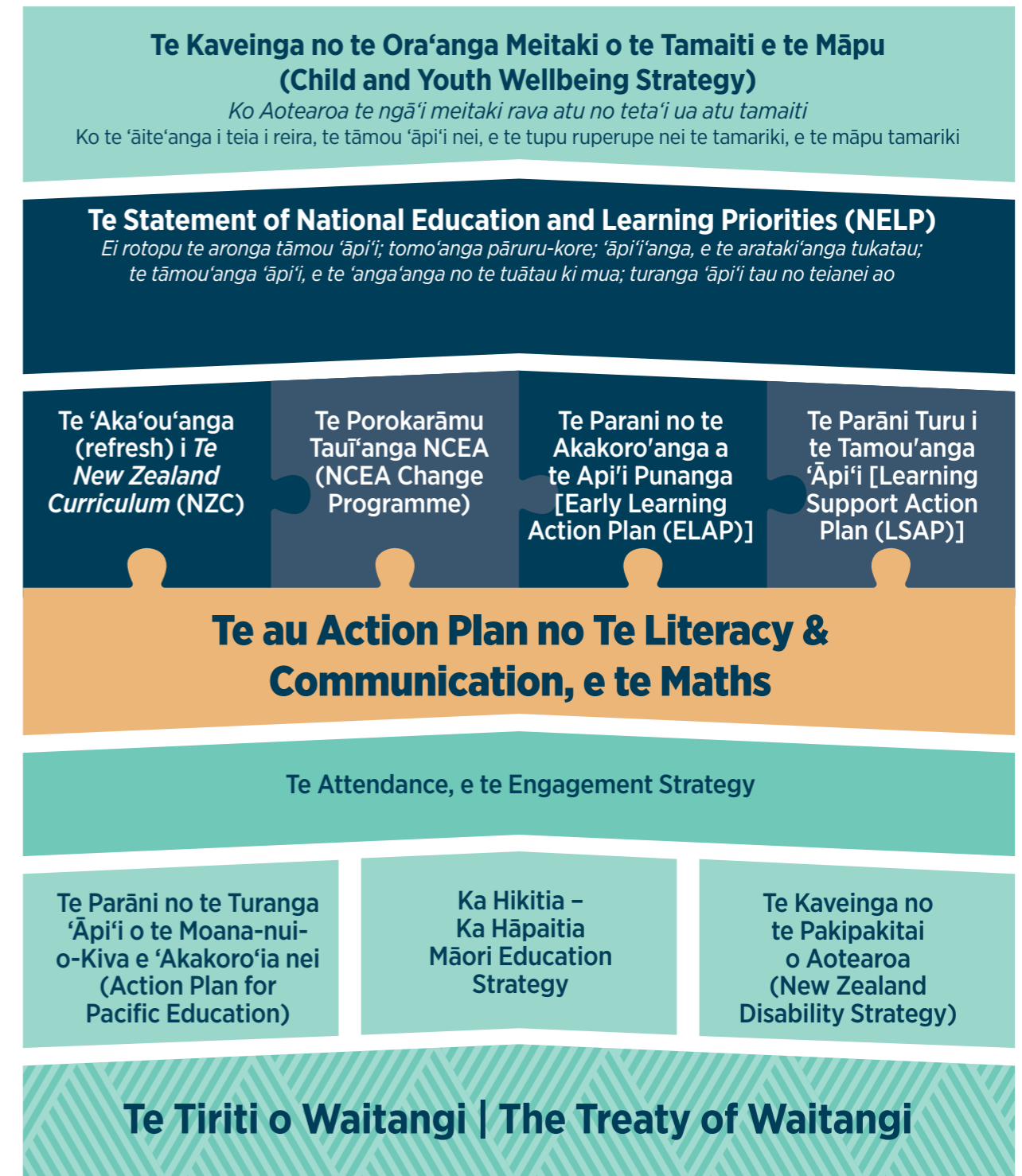
I roto i te tuātau poto, ka 'ākara matatio katoa matou i te au turu tāmou'anga 'āpi'i, te au rāvenga vāito, e te au turu'anga pu'apinga, e rave'ia nei i roto i te turanga. Na teia e 'akapāpu mai e, te āru nei teia i te au mānakonako'anga, e te arataki'anga tei roto i te Common Practice Model. Na roto i te tuātau, ka 'akatinamou te au 'anga'anga (actions) i teta'i turanga pu'apinga atu, no te turu'anga, kia rauka te turu e anoano ra te tauira, e kia takataka meitaki ki te katoatoa, te au turanga tauturu e vai nei - e pērā katoa, te tuātau tau no te tā'anga'anga i teia. Ka rauka i te au pu'āpi'i, e te au arataki, i te tā'anga'anga i te au rāvenga vāito, i te tauturu ia ratou i te neke'anga i te tauira ki mua, e te PLD no to ratou kaveinga tukatau, kia mārama ratou i te Common Practice Model, e te 'akapu'apinga atu i ta ratou 'āpi'i'anga.

## Te neke'anga i te 'anga'anga ki mua, ki teta'i turanga te tāmou ra i te 'āpi'i

Te 'akaāri mai nei te au Action Plan i to matou 'irinaki'anga ki roto i te 'akatupu'anga i teta'i turanga te tāmou ra i te 'āpi'i - ko teta'i, te 'āpi'i' ra no runga i te ao tauūi, te au kite 'ou e kitea mai nei, e te au anoano tauūi o ta tatou au tauira. Tei roto i te au taka'i'anga pu'apinga e tupu ei teia, te 'akatupu'anga i te kimikimi'anga kite, te 'ākara'anga matatio, e te au rāvenga vāito, na roto i te 'āpi'i' punanga, e te au 'āpi'i. Na roto i te 'akatupu'anga i te 'akakitekite'anga mātūtū, e te 'ātuitui'anga i te au manako, e turu ua atu rāi, i te rave'anga i te au 'anga'anga (actions), kia kite tatou i te 'ākara i te tūkē e rave nei te Strategy, no te pu'āpi'i, e te tauira. Na teia tāto'u'anga, e tauturu ia tatou i te 'akamātūtū i te Common Practice Model, i te 'akapāpu i te 'akaneke'anga i te rāvenga a te au pu'āpi'i, i te 'akaāri mai i te tu'atu'a'anga kite, e te 'akatupu'anga kite, te 'anga'anga ra no ta tatou au tauira tūkētūkē.

# Te au 'ātuitui'anga pu'apinga i roto i te turanga 'āpi'i

Ka turu, e ka 'akama'ata atu te Strategy, e te au Action Plan, i te tau'anga i ta tatou turanga 'āpi'i. Te 'akapapa atu nei te parāni i raro ake nei, i te au 'ātuitui'anga ki te strategies, e te au parāni pu'apinga a te Kavamani.

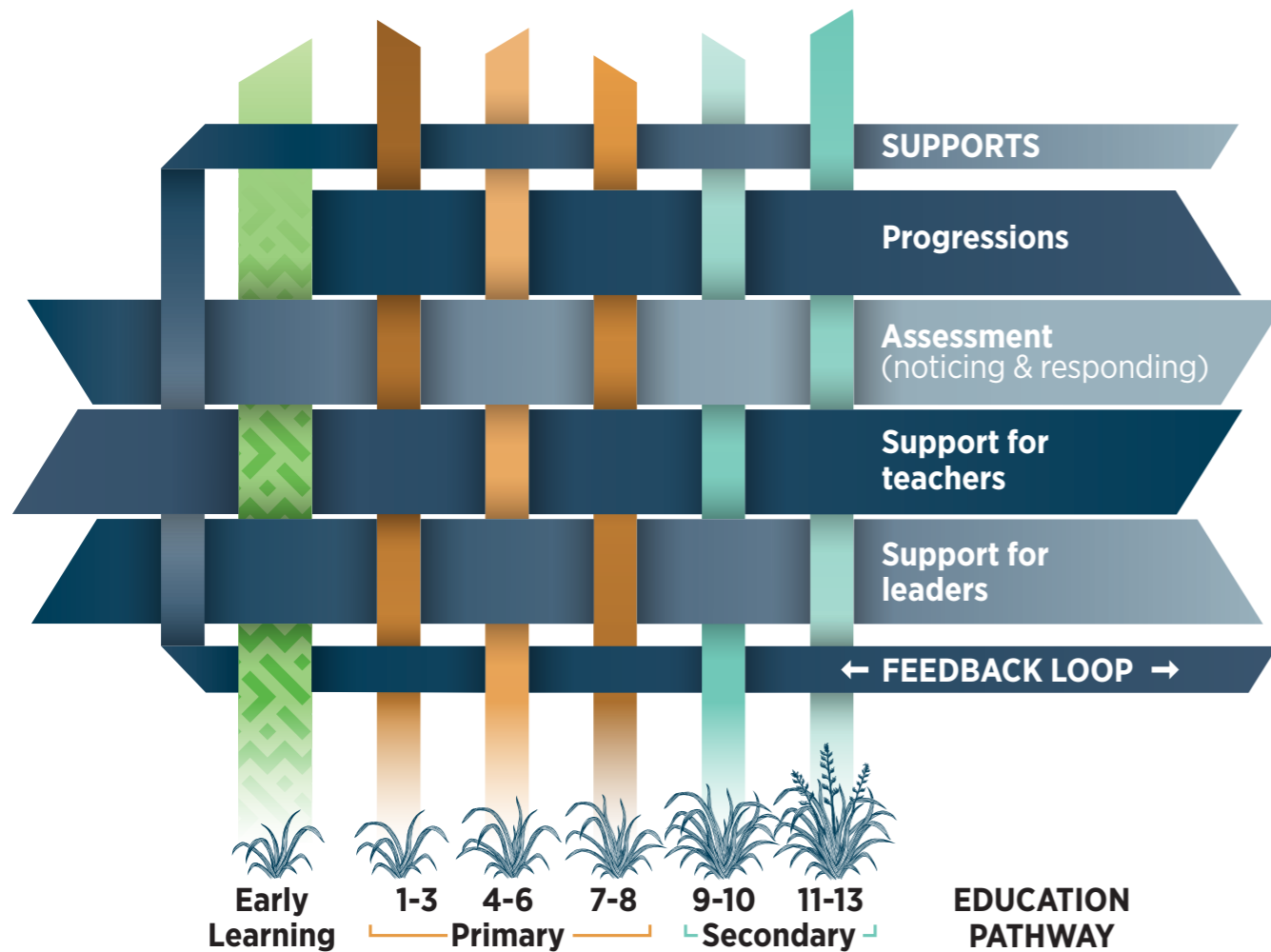


# Te Common Practice Model

## 'Akamārama'anga

Ka 'akapapa atu te Common Practice Model (CPM), i te au 'irinaki'anga, e te au rāvenga pu'apinga, no te 'āpi'i'anga, i te pange i te 'āpi'i'anga, e te tāmou'anga 'āpi'i' no te literacy & communication, e te maths i roto i *Te Whāriki*<sup>3</sup> e te *The New Zealand Curriculum*. Ka arataki teia i te 'āpi'i'anga mātutū (quality-assured teaching), e te rāvenga vāito, e te au rāvenga, no te 'āpi'i' punanga, e tae rava atu ki te 'openga, o te 'āpi'i' tuarua, na roto i Aotearoa.

Ka tango'ia te CPM, ki roto i te au rāvenga turu, e te au rāvenga 'āpi'i'ipi'i, te tāmou'anga 'āpi'i' tukatau (professional learning), e te 'akatupu'anga (development) (PLD), e te Initial Teacher Education programmes (ITE). Ka 'ōronga teia i te rāvenga takataka, e te tauī-kore, no te pu'āpi'i, e te tauira, ka 'akamātūtū i te 'āpi'i'anga, e te tāmou'anga i te literacy & communication, e te maths, ma te turu i te rāvenga tau, e te pu'apinga rava atu, no te au tauira katoatoa.



## Te 'akatupu'anga i te Common Practice Model

Kare te kaveinga e te au mea i roto i te CPM i 'akatinamou'ia ake. Ka 'akatupu ta'okota'ia, kia kitea atu te au kite ta'ito, e te au kimikimi'anga kite 'ōu. E mānganui ua atu te turanga no teta'i ua atu i te tomo mai, ia matou e neke nei ki mua.

Ka 'anga'anga ta'okota'i matou, e te au ta'unga, no te toenga o te mata'iti 2022, i te 'akapapa i teta'i tāmou'anga CPM. Ka 'anga'anga ta'okota'i katoa matou no runga i te 'akapapa'anga, ki roto i te au turanga 'āpi'i, na roto i te Term 1, e te 2, o te mata'iti 2023. I roto i ta matou 'akatupu'anga i te CPM, ka 'ākara matatio matou, ma te 'aka'ōu i te au turu PLD, kia tau ki te turu'anga i te pu'āpi'i, e te au arataki, kia mārama i te au tau'anga o te rāvenga 'āpi'i'anga, no te pu'apinga o ta ratou tauira. Ka 'ākara matatio, e ka 'aka'ōu katoa matou i te curriculum resources, e te supports, pērā katoa, i te vāito'anga no te tāmou'anga 'āpi'i (assessment for learning practices), e te au rāvenga vāito (assessment tools).

Ka pou rāi te tuātau i te rave'anga i te au mea tau, i te tā'anga'anga i te CPM, na roto i te 'āpi'i' punanga, e te au 'āpi'i, e te 'aka'aere'anga i teia ki te pae i te au tu'anga pu'apinga o ta tatou, curriculum, e te porokarāmu no te 'anga'anga vāito (assessment work programme), mei te NZC refresh, e te 'akamata'anga i te NCEA co-requisites 'ōu. Ka tauturu teia i te 'akapāpu i te 'akaneke'anga pu'apinga i te au mānako'anga tei 'aka'āri'ia mai e te CPM, te turu'anga pu'apinga, e te 'ātuitui'anga manako, e kia ta'okota'ia te au tau'anga.

## Te au neke'anga (progressions) i te literacy & communication, e te numeracy ki mua

Te 'ātui katoa ia nei te 'anga'anga i runga i te CPM, ki te 'anga'anga e rave'ia nei, i te 'akatupu i te au mea i roto i te 'akaivi, no te mathematics & statistics tei 'aka'ōu'ia (refreshed), e te au tu'anga tāmou'anga (learning areas) reo Papa'ā o te NZC. Te akatupu kapiti'ia nei te 'akaivi'anga o te au 'akakoro'anga, no teia au tu'anga tāmou'anga 'āpi'i (learning areas), e te literacy & communication, e te numeracy learning progressions, te ka riro mai ei tu'anga no te CPM.

Ka 'ātui'ia teia au neke'anga ki mua (progressions) ki te literacy & communication, e te au rāvenga numeracy (numeracy practices) o te au tu'anga tāmou'anga 'āpi'i (learning areas) pouroa, ma te 'ōronga i te au taka'ā'anga pu'apinga, e te takataka, te turu ra i te tauira i roto i te au 'akakoro'anga no te neke'anga ki mua (progress outcomes) no te au turanga tāmou'anga 'āpi'i tātakita'i. Ka 'akamātūtū teia au neke'anga ki mua (progressions) i te teretere'anga tau. Ka 'āpi'i' ratou i te au rāvenga 'ōu (new practice and progress tools) i roto i te tāmou'anga 'āpi'i' punanga, te turu ra i te formative assessment, e te rāvenga 'āpi'i'anga, e ka kite tatou i reira i te literacy, e te numeracy co-requisites 'ōu, no te NCEA, kia turu'ia, e kia te'ate'amamao meitaki ia te tauira no to ratou neke'anga atu ki te pupu teitei atu, i roto i te 'āpi'i' tuarua, e mua atu.

<sup>3</sup> Tei roto te 'ātui'anga ki *Te Whāriki* tei roto i te Strategy, e te au Action Plan, i te kaveinga o te *He whāriki mātauranga mō ngā mokopuna o Aotearoa | Early childhood curriculum*. Kare te Strategy, e te au Action Plan, e āru ana i te kaveinga o *Te Whāriki a te Kōhanga Reo*.

# Te tamarumarua'anga o te strategic actions no te Literacy & Communication<sup>4</sup>

## TU'ANGA TATO'U'ANGA 1

**1.1** Te tamou'anga i te tata'anga e te tata'anga nei 'aka'ou'ia (refresh literacy learning) i roto i te NZC, pēra katoa, te 'akamātūtū'anga i te communication e te digital literacy.

**1.2** Pa'u'ia te Learning Progression Frameworks, e te Literacy Learning Progressions ki te 'okota'i neke'anga ki mua (progression) no te 'āpi'i'anga, te 'akaāri ra i te au taka'i'anga no te tamou'anga i te literacy & communication, i raro ake i te turanga Common Practice Model.

**1.3** 'Anga'ia te au rāvenga tauturu 'āpi'i'anga, e te arataki'anga, i te tauturu i te pu'āpi'i kia mārama, e kia 'ākara meitaki i te pu'āpinga o te tauira, i roto i te reo tuatua (oral language), e te tāta, e te tatau, i roto i te au mata'iti punanga, i raro ake i te turanga Common Practice Model.

**1.4** 'Anga'ia te arataki'anga no runga i te 'āpi'i'anga i te literacy & communication i roto i te au 'āpi'i, i raro ake i te turanga Common Practice Model.

**1.5** 'Anga'ia te au rāvenga tauturu 'āpi'i'anga, arataki'anga, e te au rāvenga turu i te tamou'anga 'āpi'i' literacy & communication, no te tauira e te peu/'ākono'anga, e te reo tūkētūkē to ratou

## TU'ANGA TATO'U'ANGA 5

**5.1** 'Ākara matatio, ma te 'anga i teta'i ko'u rāvenga vāito no te au 'āpi'i.

**5.2** 'Anga'ia teta'i kaveinga vāito, i te 'ākara meitaki i te pu'āpinga i te rave'ia'anga te 'anga'anga (actions), ma te ma'ani i te au 'akatanotano'anga ki runga i te 'akairo kua pu'āpinga ana, kia pu'āpinga te turanga no te tuātau ki mua.

## TU'ANGA TATO'U'ANGA 4

**4.1** 'Anga'ia teta'i turanga 'ātuitui'anga ponuiā'au, no te tauira na roto i te kaveinga o ta ratou 'āpi'i.

**4.2** 'Ākara matatio, akatupu ma te 'akatano, i te au turu'anga no te additional literacy & communication, na roto i te katoa'anga o te ara tamou'anga 'āpi'i, e te 'akapāpu'anga e, te tau ra ki te Common Practice Model.

**4.3** 'Akatupu'ia te au turu'anga nei 'anga'anga takere ana, te turu ra i te neurodiversity o te tauira (teia te 'ākara'anga, dyslexia, dysgraphia, dyspraxia, gifted).

<sup>4</sup> 'Akamatakite'anga, tei runga ua te rave'ia'anga teta'i o teia au 'anga'anga, i te turanga o te pūtē-moni o te tuātau ki mua, e te au 'iki'anga no runga i te papa-ture.

## TU'ANGA TATO'U'ANGA 2

**2.1** 'Akatupu, ma te 'akamātūtū i te curriculum leadership, no te literacy & communication i roto i te au taka'i'anga pu'āpinga e toru, to te basileia, to te au vaka, e te au ngā'i tamou'anga 'āpi'i.

**2.2** 'Akapapa, e te 'akatupu i te tamou'anga 'āpi'i tukatau no te ora'anga 'anga'anga-moni e 'akakoro'ia nei, kia mā mā i te rave, e kia tau ki te Common Practice Model.

**2.3** 'Akaō'ia te Common Practice Model, ki roto i te au rāvenga 'āpi'i'anga, vāito'anga, e te tamou'anga 'āpi'i te tā'anga'anga'ia ra, e te turanga ITE( providers) pouora.

## TU'ANGA TATO'U'ANGA 3

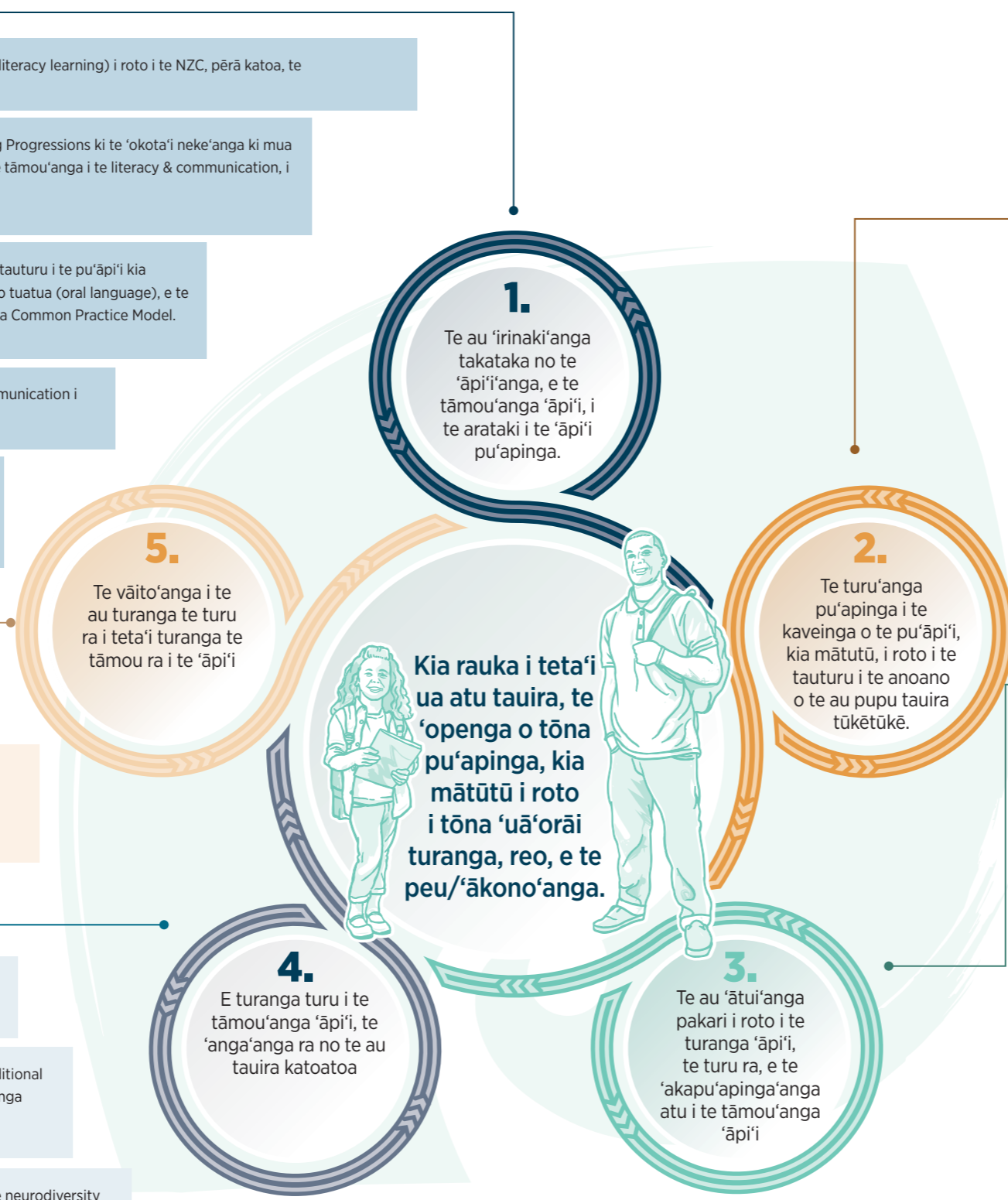
**3.1** Turu'ia te au turanga 'āpi'i' punanga, e te au 'āpi'i, kia 'anga'anga ta'okota'i ki roto i te kōpu tangata, iwi, e te au 'oire tangata, na roto i te au peu/'ākono'anga kare e ngaro, i te 'akaparerau'ara'anga i te tamou'anga literacy & communication a te tauira.

**3.2** 'Akamārama, kia takata meitaki te au mea pu'āpinga e 'inangaro'ia nei, i roto i te literacy & communication, no te au kaveinga, e te au turanga 'anga'anga tūkētūkē.

**3.3** 'Akatupu'ia te au rāvenga tauturu, arataki'anga, e te au rāvenga turu i te au turanga 'āpi'i, i te ripōti'anga ki te kōpu tangata, no runga i te neke'anga (progressing) o ta ratou tauira ki mua, ei tu'anga no te rekōti tamou'anga 'āpi'i.

**3.4** Turu'ia te au nekeneke'anga meitaki no te tauira, e te kōpu tangata, na roto, e i roto i te au 'āpi'i.

**3.5** 'Akamātūtū'ia teta'i 'ātui'anga ki te National Library, i te 'akama'ata atu i te literacy & communication engagement, e te tamou'anga 'āpi'i.





## Tu'anga tāto'u'anga 1: Ka arataki te au 'irinaki'anga takataka meitaki no te 'āpi'i'anga e te tāmou'anga 'āpi'i, i te rāvenga pu'apinga.

<b>1.1</b>	<b>Te 'aka'ou'anga (refresh) i te tāmou'anga tatau, e te tātā (literacy learning) i roto i te NZC, pērā katoa, te 'akamātūtū'anga i te communication, e te rāvenga 'ātuitui roro uira (digital literacy).</b>	
<b>1.1.1</b>	'Aka'ou'ia te tāmou'anga tatau, e te tātā (literacy learning), tei 'akamārama'ia atu i roto i te NZC, i te 'ōronga i teta'i 'akapapa'anga literacy & communication mātūtū, e te raranga'anga i te au 'irinaki'anga, i rotopu i te tatau'anga, tātā'anga, tuatua'anga, 'akarongo'anga, 'ākarakara'anga, 'ō'ora'anga, e te au rāvenga 'atuitui roro uira (digital literacy).	<ul style="list-style-type: none"> <li>» Ka 'aka'ou' te NZC refresh i te tu'anga tāmou'anga reo Papa'ā, ma te raranga i te pu'apinga i roto i te literacy &amp; communication, na roto i te au tu'anga tāmou'anga 'āpi'i katoatoa, ma te kauraro, e te 'ārikiriki i te Tiriti. Tei roto i te au tau'anga pu'apinga: <ul style="list-style-type: none"> <li>» te 'ākama'ata'anga atu i te tātou'anga e rave'ia nei, ki runga i te tatau'anga, e te tātā'anga, kia ko'u mai i te 'akapapa'anga ma'ata atu o te literacy &amp; communication knowledge e te au karape (skills), pērā katoa i te au rāvenga 'atuitui roro uira (digital literacy)</li> <li>» te 'akamātūtū'anga i te piri'anga i rotopu i te Communication   makave o te reo Mana <i>Te Whāriki</i> e te NZC, i te patu ki runga i te reo tuatua (oral language), e te tatau'anga, e te tātā'anga (literacy), te 'akaāri mai ra i te au peu/'ākono'anga no runga i te tatau'anga, e te tātā'anga na roto i te kaveinga tāmou'anga 'āpi'i</li> <li>» i te raranga'anga atu i te tāto'u'anga ki runga i te ao Māori, e te mana ōrite mō te mātauranga Māori.</li> </ul> </li> <li>» Ka kā'iro'ia atu te tāto'u'anga 'ou ki runga i te communication, e te au rāvenga 'ātuitui roro uira (digital literacy) ki roto i te Common Practice Model.</li> </ul>
<b>1.1.2</b>	'Akapapa meitaki 'ia te au kite no runga i te tāmou'anga 'āpi'i, te 'akatupu ra i te reo tuatua, e te kite no runga i te au rāvenga 'ātuitui roro uira (digital literacy knowledge), karape (skills), e te pu'apinga te ka rauka (capabilities) i roto i te NZC.	
<b>1.1.3</b>	'Akatupu'ia te Common Practice Model, i te turu i te NZC 'aka'ou'ia, e te 'anga i te turanga 'irinaki'ia e te mātūtū, i roto i te 'āpi'i'anga i te literacy & communication, na roto i te turanga 'āpi'i.	
<b>1.2</b>	<b>Pa'u'ia te Learning Progression Frameworks, e te Literacy Learning Progressions ki te 'okota'i neke'anga ki mua (progression) no te 'āpi'i'anga, te 'akaāri ra i te au taka'i'anga no te tāmou'anga i te literacy &amp; communication, i raro ake i te turanga Common Practice Model.</b>	
<b>1.2.1</b>	'Ākara matatio'ia, ma te 'akapapa 'aka'ou i te Learning Progression Frameworks, e te Literacy Learning Progressions, i te 'akaāri meitaki i te taka'i'anga o te tāmou'anga i te literacy & communication.	<ul style="list-style-type: none"> <li>» Na teta'i 'akaneke'anga (progression) takataka meitaki ki mua, e 'akamārama meitaki, e ka tauturu te au 'ākara'anga i te pu'āpi'i kia mārama i te kaveinga o te neke'anga ki mua (progression), te au taka'i'anga pu'apinga no te tāmou'anga 'āpi'i, e te au tumu manako ka anoano'ia ratou kia 'ākara meitaki, na roto i te au tu'anga tāmou'anga 'āpi'i (learning areas) pouroa, i raro ake i te turanga Common Practice Model.</li> <li>» Tāmanako'ia te 'anga'anga a te School Entry Kete, i te 'akaāri'anga mai i te mātūtū o te tauira, ia ratou e 'akamata ra i te 'āpi'i, e te 'akatinamou'anga i to ratou 'akamata'anga ki runga i te neke'anga 'ou ki mua (progression).</li> <li>» Ka turu te pa'u'anga i te au tāmou'anga 'āpi'i no te neke'anga ki mua (progressions) i te pu'āpi'i, i te 'ākara'anga meitaki, me kua papa te tauira no te vāito'ia'anga no te NCEA co-requisites, no te tatau'anga, e te tātā'anga (literacy).</li> </ul>
<b>1.2.2</b>	Kia 'akamātūtū ua atu rāi i te 'āpi'i'anga, e te tāmou'anga i te tatau'anga, e te tātā'anga, (literacy) ei tu'anga no te au tau'anga o te NCEA, pērā katoa, i te tā'anga'anga'anga i te literacy co-requisite 'ou.	

<b>1.3</b>	<b>'Anga'ia te au rāvenga tauturu 'āpi'i'anga, e te arataki'anga, i te tauturu i te pu'āpi'i kia mārama, e kia 'ākara meitaki i te pu'apinga o te tauira, i roto i te reo tuatua (oral language), e te tatau, e te tātā, i roto i te au mata'iti punanga, i raro ake i te turanga Common Practice Model.</b>	
<b>1.3.1</b>	'Akatupu ua atu rāi i te au rāvenga tāmou 'āpi'i, e te au rāvenga 'āpi'i'anga punanga, i te tauturu i te pu'āpi'i kia mārama e kia 'ākara meitaki i te neke'anga o te tāmou'anga 'āpi'i (learning progress) o te tauira ki mua, ( pērā katoa te social-emotional learning (SEL), te reo tuatua (oral language), e te tatau'anga, e te tātā'anga), i raro ake i te turanga Common Practice Model.	<ul style="list-style-type: none"> <li>» Ka turu'ia teia e te 'anga'anga (action) 4.1 o te <i>Early Learning Action Plan</i> (ELAP): 'Gazette te curriculum framework, <i>Te Whāriki</i>, i te turu i te rave'anga i te au tumu manako 'āpi'i, te au makave, te au akakoro'anga, e te au kokoti'anga o tei āpi'i'ia i te tuātau parāni'anga i te au mea ka 'āpi'i'ia.'</li> <li>» Ka tau katoa teia ki te ELAP 4.2: 'Anga ta'okota'i (co-construct) i te au tu rāvenga 'irinaki'ia, tau ki te peu/'ākono'anga, e te reo.'</li> <li>» Tei roto i te au rāvenga tauturu, te tāto'u'anga ki runga i te ao Māori, e te mana ōrite mō te mātauranga Māori.</li> <li>» Te 'akakite mai nei te kimikimi'anga kite i te piri'anga pakari i rotopu i te SEL, e te tāmou'anga reo (language learning).</li> </ul>
<b>1.3.2</b>	Tei roto i te Common Practice Model, e te au turanga tauturu a Te Poutāhū, te turu no te tā'anga'anga'anga i te au rāvenga tāmou'anga 'āpi'i, e te au rāvenga tauturu i roto i te punanga.	
<b>1.4</b>	<b>'Akatupu'ia te arataki'anga no runga i te 'āpi'i'anga i te literacy &amp; communication, i roto i te au 'āpi'i, i raro ake i te turanga Common Practice Model.</b>	
<b>1.4.1</b>	Pa'u'ia te Effective Literacy Practice resources, ki te NZC Literacy & Communication Teaching, Assessment, e te Learning Guide 'ou.	<ul style="list-style-type: none"> <li>» Ka tāru atu teia i te Early Literacy Approach, tei tā'anga'anga takere ia (teia te 'ākara'anga, Ready to Read Phonics Plus books, te turu'anga tukatau no te Better Start Literacy Approach, e te Reading Recovery and Early Literacy Support, tei 'akamātūtū'ia).</li> <li>» Na te tāmāmā'anga mai i te tā'anga'anga'anga i te au 'ākara'anga (models), e 'akapāpu kia rauka i te au arataki, i te 'akatano, e te 'akapapa i ta ratou rāvenga tau'anga, kia tau ki to ratou 'uā'orāi anoano.</li> <li>» Ka tāmanako te arataki'anga i te au rāvenga pu'apinga no te au anoano tūkētūkē o te tauira, pērā katoa, te tāmanako'anga i te tauira e mānganui ua atu te anoano.</li> <li>» Ka turu te arataki'anga no runga i te 'akapapa'anga 'akakoro'ia no te au mea tūkētūkē, i te pu'āpi'i, i te 'akamutu i te rāvenga 'akapae'anga taukore (harmful streaming), e te au rāvenga 'akapupu'anga (grouping).</li> <li>» Tei roto i te arataki'anga, te tāto'u'anga ki runga i te ao Māori, e te mana ōrite mō te mātauranga Māori.</li> </ul>
<b>1.4.2</b>	'Akatupu'ia teta'i Strategic Leadership Guide, no te au arataki i te au mea te ka 'āpi'i'ia, te au kumiti, e te au pupu arataki, kia 'akatinamou i te Common Practice Model.	
<b>1.4.3</b>	'Ōronga'ia te arataki'anga no runga i te au rāvenga pu'apinga, te 'akaviviki atu ra i te tāmou'anga 'āpi'i (accelerate learning), ma te 'akatopa mai te au mea taukore (inequities), na roto i te kaveinga 'āpi'i.	
<b>1.4.4</b>	'Ōronga'ia te arataki'anga no runga i te tuātau pu'apinga rava atu, i te 'āpi'i'anga i te literacy & communication, e te tāmou'anga 'āpi'i te anoano'ia ra, na roto i te kaveinga 'āpi'i.	





## Tu'anga Tāto'u'anga 2: Na te turu'anga pu'apinga i te kaveinga o te pu'āpi'i, kia mātutū i roto i te tauturu i te anoano o te au pupu tauira tūkētūkē

<b>1.5</b>	<b>'Akatupu'ia te au rāvenga tauturu 'āpi'i'ā'anga, arataki'anga, e te au rāvenga i te turu i te tāmou'anga 'āpi'i literacy &amp; communication, no te tauira e te peu/'ākono'anga, e te reo tūkētūkē to ratou.</b>	
<b>1.5.1</b>	'Ōronga'ia te arataki'anga no runga i te tāmou'anga reo (linguistically explicit pedagogies) no te au tauira katoatoa, 'auraka kia ratou ua te tāmou ra i te reo Papa'ā.	» 'Āpi'i'ia te au reo no te au tumu manako/'āpi'i'ā'anga tātakita'i, pērā katoa te kupu, e te 'aka'aere'anga o te reo, i te mea e, e ma'ata ua atu te au tauira te ka pu'apinga mei roto i te au rāvenga te āru ra i te au taka'i'ā'anga, me 'āpi'i'ia.
<b>1.5.2</b>	Te kite'anga, e te 'akameremere'anga i te au peu/'ākono'anga tūkētūkē, e te au reo tūkētūkē o te tauira (pērā katoa ratou te tāmou ra i te reo Papa'ā ei reo kē atu) i roto i te 'akapapa'anga i te au rāvenga tauturu, e te turu tukatau no te pu'āpi'i.	» Ka tāru'ia atu te au 'irinaki'anga no runga i te tāmou'anga reo kē atu, ki roto i te arataki'anga, e te au rāveanga tauturu. » Kia tau te arataki'anga, e te au rāvenga tauturu, ki te peu/'ākono'anga, te 'ākara ra i te au mea tukatau, e te 'akamana, e ka turu i te pu'āpi'i kia tā'anga'anga i te turanga reo tūkētūkē o te tauira. Ka tāru'ia teia ki roto i te Common Practice Model. » Ka tāmānako te au rāvenga tauturu i te vāito'anga, arataki'anga, e teta'i atu au rāvenga (pērā katoa te School Entry Kete, e te arataki'anga no runga i te vāito'anga) i te tauira te tāmou ra i te reo Papa'ā, ei reo kē atu. » Ka patu ki rungā'o i te au 'ākara'anga (models), e te au kimi'anga rāvenga 'ōu (models and initiatives) te 'anga'anga takere ra (teia te 'ākara'anga, Pasifika Early Literacy Project (PELP), Pasifika Teacher Aide Project, Pacific Bilingual & Immersion Education PLD, e te Tautai o le Moana programme).



<b>2.1</b>	<b>'Akatupu, ma te 'akamātūtū i te curriculum leadership, no te literacy &amp; communication, i roto i te au taka'i'anga pu'apinga e toru, to te basileia, to te au vaka, e te au ngā'i tāmou'anga 'āpi'i.</b>	
<b>2.1.1</b>	'Ōronga'ia te national literacy & communication leadership tei roto i Te Poutāhū, tei turu'ia e teta'i pupu tangata arataki, i te 'ōronga i te arataki'anga na roto i te turanga, i te 'akatinamou e te 'akatumu i te Common Practice Model.	Tūkētūkē ua atu te au mea 'ēkōkō'ia, i roto i te au 'akano'ono'o'anga tātakita'i, e ka anoano'ia kia 'ākara meitaki ia te arataki'anga, i roto i te au ngā'i tāmou'anga 'āpi'i.
<b>2.1.2</b>	'Ākamāro'iro'ia te 'akakitekite'anga putupu, te tuku'anga i te 'akakitekite'anga ki va'o, e te rave'anga i te 'ātuitui'anga na roto i te arataki'anga basileia, e te arataki'anga vaka.	
<b>2.1.3</b>	'Anga'ia te pu'apinga o te aronga 'anga'anga, na roto i te 'akatumu'anga e te ma'ani'anga i te au rāvenga tauturu, e te terēni'anga.	
<b>2.1.4</b>	'Ākapu'apinga'ia te parāni'anga no te aronga 'anga'anga, i te 'akatumu i te au turanga arataki i roto i te literacy & communication curriculum, i roto i te au 'āpi'i.	
<b>2.2</b>	<b>'Akapapa e te 'akatumu i te tāmou'anga 'āpi'i tukatau no te ora'anga 'anga'anga-moni e 'akakoro'ia nei, kia māmā i te rave, e kia tau ki te Common Practice Model.</b>	
<b>2.2.1</b>	'Akatinamou'ia te au rāvenga pu'apinga tei 'anga'anga takere ana (evidence-informed practices), ki roto i te au professional learning and development (PLD) katoatoa, tei tango'ia ki runga i te Common Practice Model.	» No te 'anga i te PLD motukore, e te māmā i te tomo'anga ki roto, e tau kia tāmānako'ia teta'i au 'ākara'anga (models) 'ōu. » E tau te anga'anga (action) 2.2.2 ki te ELAP 3.6: 'Akatupu'ia teta'i parāni'anga mutukore no te kimi kite 'āpi'i, e te terēni'anga tukatau tikāi.'
<b>2.2.2</b>	'Akapapa ta'okota'i (co-design), ma te 'ōronga i te PLD, no te turanga 'āpi'i punanga, i te turu i te tā'anga'anga'anga i te au rāvenga, e te au rāvenga tauturu 'ōu, tei roto i te Common Practice Model.	
<b>2.2.3</b>	'Ōronga i te au rāvenga tauturu, i te arataki, e te turu i te au ta'unga no te ma'ani'anga 'āpi'i (curriculum-area) o te 'āpi'i tuarua, i te 'akatumu i te kite, e te au rāvenga, no te 'akatumu'anga i te au karape, no teta'i ua atu 'āpi'i'ā'anga (content-specific) tatau'anga, e te tā'anga (literacy).	
<b>2.2.4</b>	'Anga i teta'i PLD kā'iro'iro'ia, i te 'akatumu i te pu'apinga o te aronga 'anga'anga turu, i roto i te turanga 'āpi'i, e te au tauturu pu'āpi'i, i te turu i te tāmou'anga literacy & communication.	
<b>2.3</b>	<b>'Akaō'ia te Common Practice Model, ki roto i te au rāvenga 'āpi'i'ā'anga, vāito'anga, e te tāmou'anga 'āpi'i te tā'anga'anga'ia ra e te turanga ITE pouroa.</b>	
<b>2.3.1</b>	'Anga'anga ta'okota'i ki roto i te au turanga ITE, e te Teaching Council, i te 'akapāpu, kia kite te au pu'āpi'i 'ōu, i te kite 'ōu, no runga i te Common Practice Model, e te au rāvenga vāito.	» Te patu nei teia ki rungā'o i te 'anga'anga e rave takere ia nei e te Teaching Council.
<b>2.3.2</b>	'Anga'anga ta'okota'i ki roto i te Teaching Council, i te patu i teta'i 'ākara'anga (model) turu, te 'akamātūtū ra i te turanga o te au pu'āpi'i, i roto i to ratou nga mata'iti mua, i te 'āpi'i'ā'anga i te literacy & communication.	

# 3

## Tu'anga Tāto'u'anga 3: E turu ana te au 'ātui'anga pakari i roto i te turanga 'āpi'i, e te 'akapu'apinga'anga atu i te tāmou'anga 'āpi'i

<b>3.1</b>	<b>Turu'ia te au turanga 'āpi'i punanga, e te au 'āpi'i, kia 'anga'anga ta'okota'i ki roto i te kōpu tangata, iwi, e te au 'oire tangata, na roto i te au peu/'ākono'anga kare e ngaro, i te 'akaparerau'ara'anga i te tāmou'anga literacy &amp; communication a te taura.</b>	
<b>3.1.1</b>	'Anga'anga ta'okota'i ki roto i te kōpu tangata, i te 'akapapa'anga, e te 'ōronga'anga i te au rāvenga tauturu, e te arataki'anga, i te tauturu ia ratou kia riro mai ei tokorua'anga mātūtū, i te 'akaneke'anga (progress) i te literacy & communication o ta ratou taura ki mua.	» E tau kia patu'ia te 'anga'anga ki runga i te au 'ākara'anga (models), e te au kimi'anga rāvenga 'ōu (initiatives) tei roto takere i te turanga (teia te 'ākara'anga, Reading Together, Talanoa Ako, e te au rāvenga tauturu a te PELP) ma te tāru atu i te kitea tei kitea'ia mei roto i te COVID-19.
<b>3.1.2</b>	Kimikimi'ia te rāvenga a te 'āpi'i (formal), e te rāvenga a teta'i ua atu (informal), no te 'akatupu'anga i te au rāvenga no te kōpu tangata, no runga i te literacy & communication.	» Ka tāmānako meitaki ia te au anoano o te aronga tāmou i te reo Papa'ā, e to ratou au kōpu tangata.
<b>3.1.3</b>	Turu i te kimi'anga rāvenga 'ōu, a te 'oire tangata, e te iwi, te tauturu ra i te kōpu tangata kia tomo mātūtū ki roto i te tāmou'anga literacy & communication, o ta ratou taura.	
<b>3.2</b>	<b>'Akamārama, kia takataka meitaki te au mea pu'apinga e 'inangaro'ia nei, i roto i te literacy and communication, no te au kaveinga, e te au turanga 'anga'anga tūkētūkē.</b>	
<b>3.2.1</b>	'Anga'anga ta'okota'i ki roto i te au 'ona 'anga'anga, e teta'i atu, i te 'akairo, e te 'akakite i te turanga o te tangata 'akaruke 'āpi'i, no runga i te literacy & communication, e te au mea anoano'ia no te kaveinga o te tangata 'akaruke 'āpi'i, e te ora'anga 'anga'anga-moni.	» Ka turu'ia te pu'āpi'i i te 'akakite'anga i teia 'akakitekite'anga ki te taura, e to ratou kōpu tangata, i te 'akamata'anga i to ratou teretere'anga na roto i te 'āpi'i tuarua. » Ka turu'ia teia e te careers education, e te School Leavers' Toolkit.
<b>3.2.2</b>	'Anga'ia teta'i 'akako'uko'u'anga, te arataki ra, e te turu ra i te au kaveinga tāmou'anga 'āpi'i- ei tā'anga'anga na te aronga tāmou 'āpi'i, e to ratou au kōpu tangata, e pēra katoa, te au pu'āpi'i, e te au kumiti 'āpi'i.	
<b>3.3</b>	<b>'Akatupu'ia te au rāvenga tauturu, arataki'anga, e te au rāvenga turu i te au turanga 'āpi'i, i te ripōti'anga ki te kōpu tangata, no runga i te neke'anga (progressing) o ta ratou taura ki mua, ei tu'anga no te rekōti tāmou'anga 'āpi'i.</b>	
<b>3.3.1</b>	'Anga'anga ki roto i te au turanga 'āpi'i, e te kōpu tangata, i te 'akatupu i te ripōti'anga mātūtū no runga i te neke'anga ki mua (progress), e te pu'apinga tei rauka.	» Ka rauka teia 'anga'anga i te 'akaneke'ia, ei tuku'anga ki roto i te au rekōti tāmou'anga 'āpi'i (records of learning), te ka āru i te taura, tei 'akatupu takere ia.
<b>3.4</b>	<b>Turu'ia te au nekeneke'anga meitaki no te taura, e te kōpu tangata na roto, e, i roto i te au 'āpi'i.</b>	
<b>3.4.1</b>	'Akamāro'iro'ia te 'anga'anga ta'okota'i, na roto i te au turanga, e te komakoma'anga, i te turu i te au nekeneke'anga o te taura, e to ratou kōpu tangata.	» E mānganui ua atu te au nekeneke'anga o te taura, e to ratou kōpu tangata, na roto i te katoa'anga, o te teretere'anga tāmou 'āpi'i. Tei rotopu teta'i o teia, i te au ngā'i 'āpi'i (teia te 'ākara'anga, te neke'anga mei te 'āpi'i punanga ki te 'āpi'i, me kore ra, te neke'anga ki te 'āpi'i tuarua), e i roto anake (teia te 'ākara'anga, te neke'anga i te tāto'u'anga ki runga i teta'i 'āpi'i'āpi'i'anga pu'apinga, i te tua teitei o te 'āpi'i tuarua).
<b>3.4.2</b>	Rave ua ia atu rāi, i te 'anga'anga 'akatupu'anga i teta'i School Entry Kete, i te turu i te au nekeneke'anga mei roto i te 'āpi'i punanga, ki te 'āpi'i.	
<b>3.4.3</b>	'Akatupu ma te tā'anga'anga i te au ko'u nekeneke'anga, i te turu i te kōpu tangata, taura, e te pu'āpi'i.	» Ko te 'anga'anga'anga ta'okota'i ki roto i te au tū tangata, te mea pu'apinga, i te turu'anga i te taura, pēra katoa i te kōpu tangata, te iwi, e te au mēma o te 'oire tangata, tei roto i te 'ātuitui'anga turu i te taura.

<b>3.5</b>	<b>'Akamātūtū'ia teta'i 'ātui'anga ki te National Library, i te 'akama'ata atu i te literacy &amp; communication engagement, e te tāmou'anga 'āpi'i.</b>	
<b>3.5.1</b>	'Anga'anga ta'okota'i ki roto i te National Library, i te 'akatupu atu i ta ratou au 'ākara'anga (models) no te 'akamātūtū'anga i te tāmou'anga literacy & communication, i roto i te 'oire tangata, e i roto i te au 'āpi'i, e, i te 'akamāro'iro'ia i te au rāvenga tatau puka, na roto i te au 'oro'oro'anga, e te au putuputu'anga, tei 'ātui'ia ki te literacy & communication.	» Patu na runga'o i te au putuputu'anga, e te au kimikimi'anga rāvenga 'ōu e rave'ia nei (teia te 'ākara'anga, Pūtoi Rito Community of Readers). » Ka 'ōronga teia i te rāvenga, no te 'akaneke'anga i te tāmou'anga 'āpi'i, ki va'o ake i te au turanga 'āpi'i, e te 'u'uti mai i te kōpu tangata, na roto i te au kimikimi'anga rāvenga 'ōu, i roto tikāi i te tuātau 'ōrote o te kiritimiti. » Ka tā'anga'anga, te 'anga'anga ta'okota'i'anga ki te National Library, i ta ratou au rāvenga tauturu, e ta ratou au tū raverave'anga, ma te kimikimi atu i te ma'ani'anga, i teta'i au rāvenga 'ōu.





## Te Tu'anga Tāto'u'anga 4: E turanga turu i te tāmou'anga 'āpi'i, te 'anga'anga ra no te au tauira katoatoa

<b>4.1</b>	<b>'Anga'ia teta'i turanga 'ātuitui'anga ponuiā'au, no te tauira na roto i te kaveinga o ta ratou 'āpi'i.</b>	
<b>4.1.1</b>	'Akatupu'ia teta'i 'ātuitui'anga ponuiā'au, pu'apinga, e te tau, te turu ra i te tauira, kia 'akairo'ia no teta'i atu turu tāmou'anga 'āpi'i.	<ul style="list-style-type: none"> <li>» Ka pange te nekeneke'anga (progression) pu'apinga i te au 'ātuitui'anga ponuiā'au i roto i te turanga 'āpi'i.</li> <li>» Tei roto i teia, te tāmānako'anga i te 'anga'anga a te School Entry Kete, e te anoano o te tauira, te tomo atu ra ki roto i te NCEA co-requisite.</li> <li>» Ka tāmānako'ia te 'anga'anga a te Learning Support Coordinator, i te ko'iko'i 'akakitekite'anga, e te kimikimi'anga rāvenga no teta'i atu turu, te vai ra pa'a no te katoatoa, tei 'akakoro'ia, me kore ra, no teta'i anake.</li> </ul>
<b>4.1.2</b>	'Akairo'ia te au turanga pu'apinga, te 'akaāri mai ra e, e mea tau ki te nekeneke'anga (progression) o te tauira ki mua, kia 'ātui'ia ki teta'i atu turu'anga.	
<b>4.1.3</b>	'Akapu'apinga'ia atu, te tomo'anga ki roto i te turu'anga tau, no te au tauira o teta'i ua atu mata'iti, e anoano kē atu to ratou.	
<b>4.2</b>	<b>Ākara matatio, akatupu, ma te 'akatano i te au turu'anga no te additional literacy &amp; communication, na roto i te katoa'anga o te ara tāmou'anga 'āpi'i, e te 'akapāpu'anga e, te tau ra ki te Common Practice Model.</b>	
<b>4.2.1</b>	'Ātui'ia te turu'anga kē atu no te literacy, ki te au rāvenga te 'anga'anga meitaki ra.	<ul style="list-style-type: none"> <li>» Ka tāmānako teia i te au anoano na roto i te katoa'anga o te kaveinga tāmou'anga 'āpi'i, e te pu'apinga, i te kite'anga vave, e te rave'anga i te anoano, (tei 'ātui'ia ki te priorities 2, e te 3 i roto i te <i>Learning Support Action Plan</i>). Tei roto i te 'ākara'anga matatio i te au turu e vai nei: <ul style="list-style-type: none"> <li>» Te kimikimi'anga i te pu'apinga o te Oral Language Literacy Initiative, ma te 'oronga'anga vave i te reira, na roto i te kaveinga tāmou'anga 'āpi'i</li> <li>» te 'akatanotano'anga i te Reading Recovery, e te Early Literacy Support, kia tau ki te au tāmānako'anga, mei roto mai i te rāvenga vāito, e rave'ia nei.</li> <li>» te 'ākara'anga matatio i te Accelerating Learning, i roto i te Literacy</li> <li>» te 'akamātūtū'anga i te pēpa kite, e te 'akatupu'anga i te pu'apinga o te turu'anga na roto i te katoa'anga o te tatau'anga, e te tātā'anga (literacy), pērā katoa te reo tuatua (oral language).</li> </ul> </li> <li>» Ka tāmānako te turu'anga, i te au anoano tūkētūkē o te tauira, pērā katoa, te tāmānako'anga i te au anoano e mānganui.</li> <li>» Kua 'akatinamou'ia te kimi'anga rāvenga 'ōu no te Literacy and Numeracy Support in Schools, i te mata'iti (2021/22), ei turu i te au tauira mua, no te tārērē NCEA co-requisite.</li> </ul>
<b>4.2.2</b>	'Ākara matatio, e te 'akamātūtū i te turanga, e te 'anga'anga, a te Resource Teachers of Literacy.	
<b>4.2.3</b>	Tuku i teta'i atu turu'anga na rungā'o, no te au tauira i roto i te 'āpi'i tuarua, te 'ēkōkō'ia ra e, kare e pāti i te NCEA co-requisite.	
<b>4.2.4</b>	'Anga'ia te au rāvenga, no te au turu'anga pu'apinga, e te au rāvenga 'āpi'i'anga, i te tāmou'anga literacy & communication.	

<b>4.3</b>	<b>'Akatupu i te turu'anga pu'apinga no te tauira neurodiverse (teia te 'ākara'anga, dyslexia, dysgraphia, dyspraxia, gifted).</b>	
<b>4.3.1</b>	'Akamātūtū'ia te turanga o te aronga 'anga'anga, kia mārama i te turanga o te neurodiverse, kia tāvini i te anoano o te au tauira katoatoa, pērā katoa ratou, tei tū'ia i te dyslexia.	<ul style="list-style-type: none"> <li>» Ka 'akaāri mai te 'anga'anga, i te au rāvenga te meitaki nei no te Māori kanorau ā-roto   neurodiverse.</li> <li>» Ka kite'ia te au anoano, e te au turu'anga mei roto mai i te tauira, e ka tāto'u'ia ki runga i te 'irinaki'anga ki runga i ta te tauira i mātau (practice response) (kare ki runga i ta te taote tāmānako'anga).</li> <li>» Ka anoano'ia kia 'ākara meitaki ia te taukore o te au rāvenga e kite'ia nei, i te anoano o te tauira neurodiverse.</li> <li>» Ka tāmānako'ia te 'akapu'apinga'ia'anga te rāvenga e rauka mai ei te tauturu, e te au kite 'ātuitui roro uira (digital technologies) ei tu'anga no te 'āpi'i'anga 'ārikiriki.</li> <li>» Kua 'ātui'ia atu ki teia, te tāmātamata nei matou i teia 'ati'anga, i te au ko'u literacy and communication, no te tauira i roto i te 'Āpi'i Mata'iti 2-8, te anoano ra i te turu'anga kē atu, no runga i te tāmou'anga i te tatau. E turanga vāito (diagnostic), takataka (explicit), te āru ra i teta'i 'aka'aere'anga (systematic), e te patu'anga kia tupu (cumulative), to teia au ko'u. Ka 'akatupu ratou i te kite i te tangi'anga o te kupu (phonemic awareness), te turanga o te ara-reta (the alphabet principle), te 'oro'anga o te reo (fluency) te kite no runga i te kupu (vocablurary), e te mārama'anga i te au mea tei tātā'ia (comprehension skills)</li> <li>» Tei roto katoa i teia, te 'ākara'anga matatio, e te 'aka'ōu'anga i te au rāvenga tauturu, kare e na te Māraurau, tei runga i te Literacy Online Dyslexia Resource Kete.</li> </ul>
<b>4.3.2</b>	Kimikimi, e te arataki atu i te kōpu tangata, te au 'āpi'i, e te au turanga 'āpi'i punanga, no runga i te au rāvenga 'ātuitui roro uira (digital technology) (targeted), e te au rāvenga tauturu (assistive technologies) (individual) i te turu i te tāmou'anga literacy & communication.	

<b>5.1</b>	<b>'Ākara matatio ma te 'akatupu i teta'i ko'u rāvenga vāito, no te au 'āpi'i.</b>	
<b>5.1.1</b>	'Akatakata meitaki, ma te 'akatupu, i te au rāvenga vāito, e te au rāvenga 'āpi'i, i roto i 'āpi'i, kia tau ki te Common Practice Model.	<ul style="list-style-type: none"> <li>» Tei roto i teia te 'anga'anga no runga i te 'akatupu'anga, i teta'i School Entry Kete, i te turu i te nekeneke'anga meitaki i roto i te 'āpi'i, e te 'aka'ou'anga i te -asTTle, kia tano no te vāito'anga i roto i te basileia, kia tau ki te NZC tei 'aka'ou'ia, e te au nekeneke'anga 'ou ki mua (progressions).</li> <li>» Ka tāmānako'ia te pu'apinga o te kite 'ātuitui uira (artificial intelligence), e te 'smart insights', i te tauturu i te tōpiri'anga i te vā kia tau, te 'akapu'apinga'anga i te 'aka'aere'anga, e te tāmāmā mai i te 'apainga i runga i te pu'āpi'i.</li> <li>» Ka 'akatanotano'ia te au rekōti no runga i te tāmou'anga 'āpi'i, ma te mou piri ki te vāito'anga mātūtū.</li> </ul>
<b>5.2</b>	<b>'Anga'ia teta'i kaveinga vāito, i te 'ākara meitaki i te pu'apinga i te rave'ia'anga te 'anga'anga (actions), ma te ma'ani i te au 'ākatanotano'anga ki runga i te 'akairo meitaki, kia pu'apinga te turanga no te tuātau ki mua.</b>	
<b>5.2.1</b>	'Akatupu'ia teta'i kaveinga kimikimi'anga kite, i te 'akatanotano i te au vā e kite'ia nei, na roto i te teretere'anga tāmou 'āpi'i.	<ul style="list-style-type: none"> <li>» Ka anoano'ia teta'i tātou'anga tei 'ātuitui'ia, e te motukore, no runga i te kimikimi'anga kite, i te neke ua atu rāi, i ta tatou turanga ki mua, e tei roto te kite no runga i te au rāvenga 'ātuitui roro uira (digital literacy), e te au rāvenga tau ki te peu/ākono'anga, te tāvini ra i te au taura tūkētūkē.</li> <li>» E tau te kite no te 'enua-i-tai, kia 'akamātūtū'ia atu ki te au tātā'anga tukatau, e te 'akakitekite'anga tau, ki ta tatou e rave nei i roto i Aotearoa.</li> </ul>
<b>5.2.2</b>	'Anga'anga ta'okota'i ki roto i teta'i atu, i te 'ākara meitaki, e te vāito, i te pu'apinga o te Literacy & Communication Action Plan (ki runga tikāi i te Māori, te aronga tāmou 'āpi'i no te Moana-nui-o-Kiwa, e te taura e anoano kē atu to ratou, no te tāmou'anga 'āpi'i ).	<ul style="list-style-type: none"> <li>» Na roto i te 'anga'anga ta'okota'i'anga o te Māraurau, e te Education Review Office, e teta'i, refreshed National Monitoring Study of Student Achievement, e rauka ei te 'akakitekite'anga tukatau, no runga i te 'anga'anga a te turanga.</li> <li>» Na roto i te 'akapapa'anga i te au rāvenga tauturu, arataki'anga, e ka tupu te au rāvenga na roto i te tuātau, no te kite tei rauka mai i te kimikimi'anga kite, e te 'akairo kia tau, te rave'ia nei no te 'anga'anga (fit-for-purpose).</li> </ul>
<b>5.2.3</b>	Tu'atu'a'ia, ma te tau'iūi, i te 'akakitekite'anga, e te kite no runga i te 'āpi'i'anga, tāmou'anga 'āpi'i, e te vāito'anga' i te literacy & communication, na roto i te Online Curriculum Hub 'ou, e teta'i atu au 'ātuitui'anga 'ou, e te au 'ātuitui'anga e vai nei.	



# Te tāmārumaru'anga o te kaveinga, no te rave'anga i te Maths<sup>5</sup>

## TU'ANGA TĀTO'U'ANGA 1

- 1.1** Te tāmou'anga maths tei 'aka'ou'ia (refresh maths learning) tei 'ākamarama'ia mai i roto i te NZC.
- 1.2** Pa'u'ia te Learning Progression Framework, ki te 'okota'i neke'anga ki mua (progression) no te 'āpi'i'anga, te 'akaāri ra i te au taka'i'anga no te tāmou'anga i te numeracy, i raro ake i te turanga Common Practice Model.
- 1.3** 'Anga'ia te au rāvenga tauturu 'āpi'i'anga, e te arataki'anga, i te tauturu i te pu'āpi'i kia mārama, e kia 'ākara meitaki i te pu'apinga o te taura, i roto i te numeracy, i roto i te au mata'iti punanga, i raro ake i te turanga Common Practice Model.
- 1.4** 'Anga'ia te arataki'anga no runga i te 'āpi'i'anga i te maths, i roto i te au 'āpi'i, i raro ake i te turanga Common Practice Model.
- 1.5** Pāruru'ia kia ponuiā'au, te tuātau 'āpi'i'anga, e te tāmou'anga i te maths.

## TU'ANGA TĀTO'U'ANGA 2

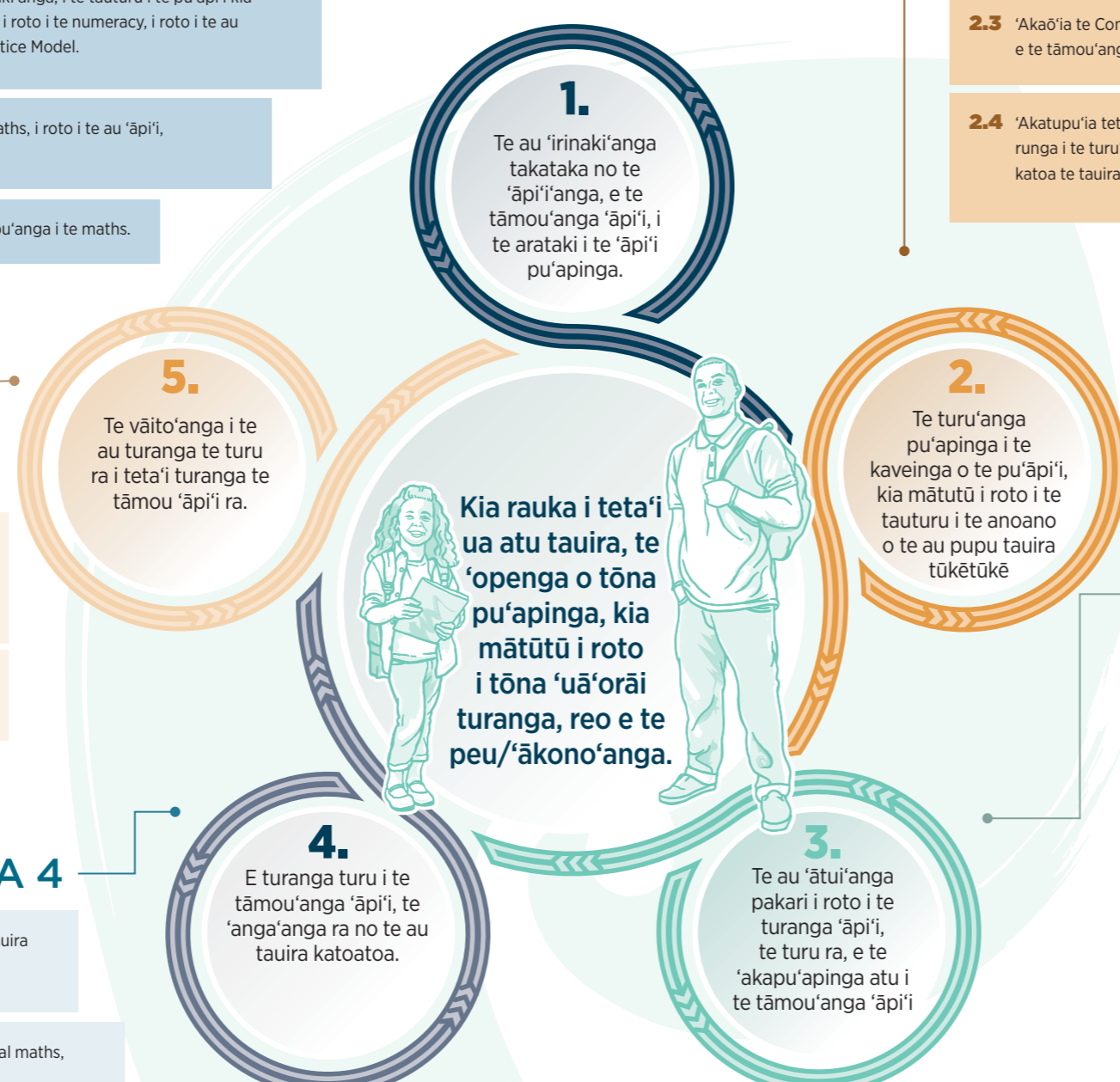
- 2.1** 'Akatupu, ma te 'akamātūtū i te curriculum leadership, no te maths i roto i te au taka'i'anga pu'apinga e toru: to te basileia, to te au vaka, e te au ngā'i tāmou'anga 'āpi'i.
- 2.2** 'Akapapa e te 'akatupu i te tāmou'anga 'āpi'i tukatau no te ora'anga 'anga'anga-moni e 'akakoro'ia nei, kia māmā i te rave, e kia tau ki te Common Practice Model.
- 2.3** 'Akaō'ia te Common Practice Model, ki roto i te au rāvenga 'āpi'i'anga, vāito'anga, e te tāmou'anga 'āpi'i, te tā'anga'anga'ia ra e te au turanga ITE pouroa.
- 2.4** 'Akatupu'ia teta'i aranga 'anga'anga tukatau i roto i te maths, e kite pakari to ratou no runga i te turu'anga i te taura 'ēkōkō'ia, e teta'i anake taura te anoano ra i te reira, pērā katoa te taura neurodiverse (teia te 'ākara'ana, dyscalculia, dyslexia, dyspraxia, gifted).
- 2.5** 'Ūtia mai, ma te 'akatupu no te tuātau ki mua, te pupu pu'āpi'i 'āpi'i maths, na roto i te au tāparu'anga, terēni'anga, e te 'akapu'apinga'anga i te ara 'anga'anga-moni.

## TU'ANGA TĀTO'U'ANGA 5

- 5.1** 'Ākara matatio ma te 'akatupu i teta'i ko'u rāvenga vāito, no te 'āpi'i'anga.
- 5.2** 'Anga'ia teta'i kaveinga vāito, i te 'ākara meitaki i te pu'apinga i te rave'ia'anga te 'anga'anga (actions), ma te ma'ani i te au 'ākatanotano'anga ki runga i te 'akairo meitaki, kia pu'apinga te turanga no te tuātau ki mua.
- 5.3** 'Akatupu i te au rāvenga pu'apinga, no runga i te 'āpi'i'anga, tāmou'anga, e te vāito'anga i te maths, na roto i te ara 'āpi'i.

## TU'ANGA TĀTO'U'ANGA 4

- 4.1** 'Anga'ia teta'i turanga 'ātuitui'anga ponuiā'au, no te taura na roto i te ara 'āpi'i'anga.
- 4.2** 'Akapapa e te akatupu i te au turu'anga no te additional maths, na roto i te katoa'anga o te ara tāmou'anga 'āpi'i, e te 'akapāpu'anga e, te tau ra ki te Common Practice Model.



## TU'ANGA TĀTO'U'ANGA 3

- 3.1** Turu'ia te au turanga 'āpi'i' punanga, e te au 'āpi'i, kia 'anga'anga ta'okota'i ki roto i te kōpu tangata, iwi, e te au 'oire tangata na roto i te au peu/'ākono'anga kare e ngaro, i te 'akaparerau'ara'anga i te tāmou'anga maths a te taura.
- 3.2** 'Akatakataka meitaki ia te au 'irinaki'anga ka 'inangaro'ia no te au ara kī'ia i te maths, e te ora'anga 'anga'anga-moni i roto i te maths.
- 3.3** 'Akatupu'ia te au rāvenga tauturu, arataki'anga, e te au rāvenga turu i te au turanga 'āpi'i, i te ripōti'anga ki te kōpu tangata, no runga i te neke'anga (progressing) o ta ratou taura ki mua, ei tu'anga no te rekōti tāmou'anga 'āpi'i.
- 3.4** Turu'ia te au nekeneke'anga meitaki no te taura, e te kōpu tangata na roto, e i roto i te au 'āpi'i.
- 3.5** 'O'ora'ia ki va'o, kia kite te 'iti tangata, i te pu'apinga o te numeracy, e te au rāvenga ka 'ōronga atu te au ara kī'ia e te maths.

<sup>5</sup> 'Akamatakite'anga, tei runga ua te rave'ia'anga teta'i o teia au 'anga'anga, i te turanga o te pūtē-moni o te tuātau ki mua, e te au 'iki'anga no runga i te papa-ture.



## Tu'anga tāto'u'anga 1: Ka arataki te au 'irinaki'anga takataka meitaki no te 'āpi'i'anga, e te tāmou'anga 'āpi'i, i te rāvenga pu'apinga.

<b>1.1</b>	<b>'Aka'ou'ia te tāmou'anga maths, mei tei 'akamārama'ia i roto i te NZC.</b>	
<b>1.1.1</b>	'Aka'ou'ia te tāmou'anga maths, mei tei 'akamārama'ia i roto i te NZC, i te 'ōronga i teta'i 'akapapa'anga (framework) tau, e te au taka'i'anga no te numeracy, na roto i te au tu'anga tāmou'anga 'āpi'i (learning areas) pouroa, e no te tu'anga tāmou'anga (learning areas) o te mathematics & statistics.	» Ka 'aka'ou' te 'aka'ou'anga NZC i te tu'anga tāmou'anga (learning area), mathematics & statistics, ma te raranga i te pu'apinga i roto i te numeracy, na roto i te au tu'anga tāmou'anga 'āpi'i (learning areas) katoatoa, ma te kauraro, e te 'ārikiriki i te Tiriti. Tei roto i te au tau'anga pu'apinga:
<b>1.1.2</b>	Ākatakataka meitaki, ma te turama atu i te pu'apinga o te numeracy, te anoano'ia ra no te ora'anga meitaki, no te rave'anga i te 'anga'anga, e te turanga 'iti tangata, i teia ra, e 'āpōpō atu.	» te 'apai'anga i teta'i maths ki roto i te au Mata'iti 'Āpi'i 0-3, te 'āpi'i'ia nei ki roto i te au pupu pākārikari ake, kia rauka vave i te tauria i roto i teia taka'i'anga o to ratou ara, te pu'apinga o te tāmou'anga 'āpi'i
<b>1.1.3</b>	'Akatupu'ia te Common Practice Model, i te turu i te NZC tei 'aka'ou'ia, e te 'anga i te turanga 'irinaki'ia e te mātūtū, i roto i te 'āpi'i'anga i te numeracy, mathematics, e te statistics, na roto i te turanga 'āpi'i.	» te raranga'anga i te au mea te ka 'āpi'i'ia na roto i te 'āpi'i, no runga i te tumu e tā'anga'anga ana tatou i te au rāvenga maths, e to ratou 'akatu'ia'anga mai na roto i te tuātau, e te piri'anga i rotopu i te maths, e te peu/'ākono'anga (ethnomathematics), e te tāto'u'anga ki runga i te ao Māori, e te mana ōrite mō te mātauranga Māori » te 'ākapāpu'anga, kia kore te au taka'i'anga tāmou 'āpi'i, e 'ākapae'ia no runga i te peu/'ākono'anga » te pupu tukatau no te 'ākara i te au mea te ka 'āpi'i'ia, i raro ake i te makave mathematics o te taka'i'anga 7, e te 8, o te NZC, ma te tāmanako, me te rava nei te au tu mānako'anga no te tauria.
<b>1.2</b>	<b>Pa'u'ia te Learning Progression Framework, ki te 'okota'i neke'anga ki mua (progression) no te 'āpi'i'anga, te 'akaāri ra i te au taka'i'anga no te tāmou'anga i te numeracy, i raro ake i te turanga Common Practice Model.</b>	
<b>1.2.1</b>	'Ākara matatio'ia, ma te 'akapapa 'aka'ou i te Learning Progression Frameworks, e te Literacy Learning Progressions i te 'akaāri meitaki i te taka'i'anga o te tāmou'anga i te numeracy.	» Na teta'i 'akaneke'anga (progression) takataka meitaki ki mua, e 'akamārama meitaki, e ka tauturu te au 'ākara'anga i te pu'āpi'i kia mārama i te kaveinga o te neke'anga ki mua (progression), te au taka'i'anga pu'apinga no te tāmou'anga 'āpi'i, e te au tumu manako ka anoano'ia ratou kia 'ākara meitaki, na roto i te au tu'anga tāmou'anga 'āpi'i (learning areas) pouroa, i raro ake i te turanga Common Practice Model.
<b>1.2.2</b>	Kia 'akamātūtū ua atu rāi i te 'āpi'i'anga, e te tāmou'anga i te numeracy, ei tu'anga no te au tau'anga o te NCEA, pērā katoa, i te tā'anga'anga'anga i te numeracy co-requisite 'ou.	» Tāmanako'ia te 'anga'anga a te School Entry Kete, i te 'akaāri'anga mai i te mātūtū o te tauria, ia ratou e 'akamata ra i te 'āpi'i, e te 'akatinamou'anga i to ratou 'akamata'anga ki runga i te neke'anga 'ou ki mua (progression). » Ka turu te pa'u'anga i te au tāmou'anga 'āpi'i no te neke'anga ki mua (progressions) i te pu'āpi'i, i te 'ākara'anga meitaki, me kua papa te tauria no te vāito'ia'anga no te NCEA co-requisites, no te numeracy.

<b>1.3</b>	<b>'Akatupu'ia te au rāvenga tauturu 'āpi'i'ia'anga, e te arataki'anga, i te tauturu i te pu'āpi'i kia mārama, e kia 'ākara meitaki i te pu'apinga o te tauria, i roto i te numeracy, i roto i te au mata'iti punanga, i raro ake i te turanga Common Practice Model.</b>	
<b>1.3.1</b>	'Akama'ata'ia atu te papa o te 'akairo, o te au 'anga'anga pu'apinga, no runga i te 'ākara'anga o te neke'anga (progress) o te numeracy ki mua, pērā katoa te pu'apinga o te 'akatu'ia'anga o te reo tuatua (oral language) ki te neke'anga (progress) ki mua, e te au rāvenga pu'apinga rava atu (best practice) i te turu i te 'akatu'ia'anga o te tango i te maths, ki roto i te au 'āpi'i' punanga kia kite i te Common Practice Model i roto i te 'āpi'i' punanga.	» Ka turu'ia teia e te 'anga'anga (action) 4.1 o te <i>Early Learning Action Plan</i> (ELAP): 'Gazette the curriculum framework, <i>Te Whāriki</i> , i te turu i te rave'anga i te au tumu manako 'āpi'i, te au makave, te au akakoro'anga, e te au kokoti'anga o tei āpi'i'ia i te tuātau parāni'anga i te au mea ka 'āpi'i'ia.' » Ka tau katoa teia ki te ELAP 4.2: 'Anga ta'okota'i (co-construct) i te au tu rāvenga 'irinaki'ia, tau ki te peu/'ākono'anga, e te reo.'
<b>1.3.2</b>	'Anga'ia te au rāvenga tauturu, e te au rāvenga 'āpi'i'ia'anga, i te tauturu i te pu'āpi'i kia mārama, e kia 'ākara meitaki i te pu'apinga o te tauria, i roto i te 'āpi'i' punanga ( pērā katoa i roto i te tāmou'anga no runga i te turanga ngakau (SEL), te reo tuatua (oral language) e te maths), i raro ake i te turanga Common Practice Model.	» Tei roto i te au rāvenga tauturu, te tāto'u'anga ki runga i te ao Māori, e te mana ōrite mō te mātauranga Māori. » Te 'akakite mai nei te kimikimi'anga kite i te piri'anga pakari i rotopu i te SEL, te tāmou'anga reo, e te maths.
<b>1.3.3</b>	Tei roto i te Common Practice Model, e te au turanga tauturu a Te Poutāhū, te turu no te tā'anga'anga'anga i te au rāvenga tāmou'anga 'āpi'i, e te au rāvenga tauturu i roto i te punanga	
<b>1.4</b>	<b>'Anga'ia te arataki'anga no runga i te 'āpi'i'anga i te maths, i roto i te au 'āpi'i, i raro ake i te turanga Common Practice Model.</b>	
<b>1.4.1</b>	'Akatupu'ia teta'i NZC Maths Teaching, Assessment, e te Learning Guide, te kā'iro ra i te au tū rāvenga tei kite takere ia, e te pu'apinga ra, no runga i te 'āpi'i'anga, e te tāmou'anga i te maths.	» Ka 'akatano te arataki'anga, e teta'i atu rāvenga 'āpi'i'ia'anga, i te au mānako'anga kā'iro'iro, e te taukore, no runga i te rāvenga pu'apinga rava atu, i te 'āpi'i'anga i te maths, kia mārama meitaki te pu'āpi'i.
<b>1.4.2</b>	'Akatupu e te tāmatamata i teta'i porokarāmu no runga i te 'āpi'i'anga, e te tāmou'anga maths, mei te 'akamata'anga ki te 'openga, no te au 'āpi'i' tei tau ki te Common Practice Model, ma te 'ōronga i te tāmou'anga 'āpi'i' te āru ra i te au taka'i'anga tātakita'i no te tauria i roto i te 'Āpi'i' Mata'iti 0-10.	» Tei roto katoa i te arataki'anga, te pu'apinga o te tauria i te tomo'anga ki roto i te au tū rāvenga tāmou'anga 'āpi'i, pērā katoa: te mea takataka meitaki, te 'āpi'i'anga na roto i te au taka'i'anga, te au kaveinga 'akatanotano'anga, te au rāvenga kimikimi, e te komakoma'anga, e te 'akatikatika'anga i te au mānako'anga, i raro ake i te ora'anga kimikimi.
<b>1.4.3</b>	'Aka'ou, ma te 'akapapa 'aka'ou i te au rāvenga 'āpi'i'ia'anga, kia tau ki te Common Practice Model, e ta tatou 'akatu'ia'anga i te au rāvenga takere tei pu'apinga ana, no runga i te turanga 'ārikiriki e te au peu/'ākono'anga motukore.	» Ka turu te arataki'anga no runga i te 'akapapa'anga 'akakoro'ia no te au mea tūkētūkē, i te pu'āpi'i, i te 'akamutu i te rāvenga 'akapae'anga taukore, (harmful streaming) e te 'akapupu'anga (grouping).
<b>1.4.4</b>	'Akatupu'ia teta'i Strategic Leadership Guide, no te au arataki i te au mea te ka 'āpi'i'ia, te au kumiti, e te au pupu arataki, kia 'akatinamou i te Common Practice Model.	» Na te tāmāmā'anga mai i te tā'anga'anga'anga i te au 'ākara'anga (models), e 'akapāpu kia rauka i te au arataki, i te 'akatano, e te 'akapapa i ta ratou rāvenga tau'anga, kia tau ki to ratou 'uā'orāi anoano. » Tei roto i te arataki'anga, te tāto'u'anga ki runga i te ao Māori, e te mana ōrite mō te mātauranga Māori.

## 2

### Tu'anga Tāto'u'anga 2: Na te turu'anga pu'apinga i te kaveinga o te pu'āpi'i, kia mātutū i roto i te tauturu i te anoano o te au pupu tauira tūkētūkē

<b>1.4.5</b>	'Akatupu i teta'i papa no te au rāvenga takere tei pu'apinga ana, no runga i te au rāvenga te ka 'akapu'apinga i te 'āpi'i'anga, e te tāmou'anga, ma te 'akatinamou kia tu t e au 'āpi'i' i teia au rāvenga pu'apinga.	<ul style="list-style-type: none"> <li>» Ka tāmānako te arataki'anga i te au rāvenga takere tei pu'apinga ana, no te au anoano tūkētūkē o te tauira, pērā katoa, te tāmānako'anga i te tauira e mānganui ua atu te anoano.</li> <li>» Ka tāmānako te arataki'anga i te au anoano tūkētūkē o te tauira, na roto i te 'āpi'i'anga, e te tāmou'anga i roto i te tu'anga tāmou 'āpi'i' (learning area) o te mathematics, e te statistics</li> </ul>
<b>1.5</b>	<b>Pāruru'ia kia ponuiā'au, te tuātau 'āpi'i'anga, e te tāmou'anga i te maths.</b>	
<b>1.5.1</b>	Tei roto i te Maths Teaching, Assessment, e te Learning Guide te roa o te tuātau e tāmānako'ia nei no te 'āpi'i'anga, e te tāmou'anga maths, i roto i te 'epetoma 'okota'i, i roto i te 'āpi'i'.	<ul style="list-style-type: none"> <li>» Te 'akaāri mai nei te kimikimi'anga kite e, e tūkētūkē ua atu te roa o te tuātau tāmou'anga maths, e te 'āpi'i'ia'anga te au makave o te maths, i roto i te NZC.</li> <li>» Tāmānako'ia te au rāvenga tūkētūkē i te pāruru kia ponuiā'au, te roa o te tuātau 'āpi'i'anga, e te tāmou'anga maths.</li> </ul>
<b>1.5.2</b>	Ka 'ōronga atu te Strategic Leadership Guide, i te arataki'anga no runga i te au rāvenga tūkētūkē, i te pāruru'anga kia ponuiā'au, te roa o te tuātau 'āpi'i'anga, e te tāmou'anga maths.	



<b>2.1</b>	<b>'Akatupu, ma te 'akamātūtū i te curriculum leadership, no te maths i roto i te au taka'anga pu'apinga e toru: to te basileia, to te au vaka, e te au ngā'i tāmou'anga 'āpi'i'.</b>	
<b>2.1.1</b>	'Ōronga'ia te national maths leadership (specifically including numeracy) tei roto i Te Poutāhū, tei turu'ia e teta'i pupu tangata arataki, i te 'ōronga i te arataki'anga na roto i te turanga, i te tanu e te 'akatupe i te Common Practice Model.	<ul style="list-style-type: none"> <li>» Tūkētūkē ua atu te au mea 'ēkōkō'ia, i roto i te au 'akano'ono'o'anga tātakita'i, e ka anoano'ia kia 'ākara meitaki ia te arataki, i roto i te au ngā'i tāmou'anga 'āpi'i'.</li> <li>» Noātu e tei roto i teta'i au 'āpi'i' te maths curriculum leadership roles, kare ra ratou e 'ōronga ana i te au rāvenga turu i te 'akapapa'anga i te au mea te ka 'āpi'i'ia (local curriculum design) te turu'anga teta'i i teta'i, te 'ātu'anga i te tāmou'anga 'āpi'i' ki te kōpu tangata, iwī, e te 'oire tangata, e te turu'anga i te tu'atu'a'anga manako na roto i te 'ātu'anga arataki 'āpi'i' (curriculum leadership network).</li> <li>» No te au 'āpi'i' rikiriki, ka anoano'ia pa'a, kia tu'atu'a'ia te au turanga 'anga'anga, ma te 'irinaki atu ki runga i te au arataki no te 'āpi'i' maths (maths curriculum) o te vaka.</li> </ul>
<b>2.1.2</b>	'Ākamāro'iro'ia te 'akakitekite'anga putuputu, te tuku'anga i te 'akakitekite'anga ki va'o, e te rave'anga i te 'ātu'anga na roto i te arataki'anga basileia, e te arataki'anga vaka.	
<b>2.1.3</b>	Patu'ia te pu'apinga o te aranga 'anga'anga, na roto i te 'akatupe'anga, e te ma'ani'anga i te au rāvenga tauturu, e te terēni'anga.	
<b>2.1.4</b>	'Akapu'apinga'ia te parāni'anga no te aranga 'anga'anga, i te 'akatupe i te au turanga arataki i roto i te maths curriculum, i roto i te au 'āpi'i'.	
<b>2.1.5</b>	Ma'ani'ia teta'i turanga numeracy curriculum leadership, i roto i te au 'āpi'i' tuarua, no runga i te 'irinaki'anga i te turu'anga, i te au pu'api'i kare tikāi i te au pu'api'i 'āpi'i' i te maths, kia 'āpi'i' i te numeracy, e te turu i te 'akaviviki'anga i te tāmou'anga kia neke ki mua (learning progress).	
<b>2.2</b>	<b>'Akapapa e te 'akatupe i te tāmou'anga 'āpi'i' tukatau no te ora'anga 'anga'anga-moni e 'akakoro'ia nei, kia māmā i te rave, e kia tau ki te Common Practice Model.</b>	
<b>2.2.1</b>	'Akapapa ta'okota'i (co-design) i teta'i whole-school maths professional learning and development (PLD) model, i te 'akatupe i te pu'apinga o te pu'āpi'i, tei 'akakoro'ia no te au 'āpi'i', e anoano ma'ata to ratou.	<ul style="list-style-type: none"> <li>» No te 'anga i te PLD motukore, e te māmā i te tomo'anga ki roto, e tau kia tāmānako'ia teta'i au 'ākara'anga (models) 'ōu.</li> <li>» Te anoano'ia nei, kia 'akaterē'ia atu te PLD tei tāto'u anake ia, ki runga i te 'akatupe'anga i te kite i te 'āpi'i'anga (pedagogical knowledge) o te pu'āpi'i, e to ratou mārama no runga i te au mea i roto i te maths, te ka rauka i te pu'āpi'i i te tomo atu ki roto, me anoano'ia.</li> <li>» E tau te anga'anga (action) 2.2.2 ki te ELAP 3.6: 'Akatupu'ia teta'i parāni'anga mutukore no te kimi kite 'āpi'i, e te terēni'anga tukatau tikāi. (3.6)</li> </ul>
<b>2.2.2</b>	'Akapapa ta'okota'i (co-design), ma te 'ōronga i te PLD, no te turanga 'āpi'i' punanga, i te turu i te tā'anga'anga'anga i te au rāvenga, e te au rāvenga tauturu 'ōu, tei roto i te Common Practice Model, pērā katoa te arataki'anga tei 'aka'ōu'ia no runga i te 'akakite'anga, e te tu'atu'a'anga i te au 'irinaki'anga, no runga i te maths (express and share maths concepts).	
<b>2.2.3</b>	Tanu'ia te au rāvenga pu'apinga, ki roto i te au PLD katoatoa, tei tango'ia ki runga i te Common Practice Model.	
<b>2.2.4</b>	'Anga i teta'i PLD kā'iro'iro'ia, i te 'akatupe i te pu'apinga o te aranga 'anga'anga turu, i roto i te turanga 'āpi'i, e te au tauturu pu'āpi'i, i te turu i te tāmou'anga maths.	



### Tu'anga Tāto'u'anga 3: E turu ana te au 'ātui'anga pakari i roto i te turanga 'āpi'i, e te 'akapu'apinga'anga atu i te tāmou'anga 'āpi'i

<b>2.3 'Akaō'ia te Common Practice Model, ki roto i te au rāvenga 'āpi'i'anga, vāito'anga, e te tāmou'anga 'āpi'i, te tā'anga'anga'ia ra e te au turanga ITE pouroa.</b>		
<b>2.3.1</b>	'Anga'anga ta'okota'i ki roto i te au turanga ITE, e te Teaching Council, i te 'akapāpu, kia kite te au pu'āpi'i 'ōu, i te kite 'ōu, e kia mārama i te Common Practice Model, e te au rāvenga vāito.	» Te patu nei teia ki runga'o i te 'anga'anga e rave takere ia nei e te Teaching Council.
<b>2.3.2</b>	'Anga'anga ta'okota'i ki roto i te Teaching Council, i te patu i teta'i 'ākara'anga (model) turu, te 'akamātūtū ra i te turanga o te au pu'āpi'i, i roto i to ratou nga mata'iti mua i te 'āpi'i'anga i te maths.	
<b>2.4 'Akatupu'ia teta'i aronga 'anga'anga tukatau i roto i te maths, e kite pakari to ratou no runga i te turu'anga i te tauria 'ēkōkō'ia, e teta'i anake tauria te anoano ra i te reira, pērā katoa te tauria neurodiverse (teia te 'ākara'ana, dyscalculia, dyslexia, dyspraxia, gifted).</b>		
<b>2.4.1</b>	'Ākara matatio i te 'ākara'anga (model) Programmes for Students Maths Specialist Teachers e te pūtē moni a te 'āpi'i tuatoru, no te turu i te pu'āpi'i, kia tomo atu ki roto i te 'anga'anga 'ōu, ei turu i te tauria tāmou maths ( new maths learner support), e te turanga arataki i te 'āpi'i'anga (curriculum leadership roles).	» Ka aruaru'ia, e ka turu'ia te pu'āpi'i, kia 'akatupu i to ratou kite 'āpi'i'anga (pedagogical knowledge), e te mārama'anga i te au mea i roto i te maths.
<b>2.4.2</b>	Aruaru i te pu'āpi'i, kia terēni'ia ei ta'unga maths, na roto i te 'akamāro'iro'ia i te ara 'anga'anga-moni tei 'akapu'apinga'ia, e te au rāvenga i roto i te turanga 'āpi'i e vai nei.	
<b>2.4.3</b>	'Akapapa i te au rāvenga i roto i te turanga 'āpi'i, e te PLD, te turu ra i te pu'āpi'i kia 'akatukatau iāia 'uā'orāi, i roto i te au rāvenga 'akaviviki (accelerative practices),no te au tauria tūkētūkē, pērā katoa, te neurodiverse.	
<b>2.5 'Ūtia mai, ma te 'akatupu no te tuātau ki mua, te pupu pu'āpi'i 'āpi'i maths, na roto i te au tāparu'anga, terēni'anga, e te 'akapu'apinga'anga i te ara 'anga'anga-moni.</b>		
<b>2.5.1</b>	'Akapapa 'aka'ōu'ia te professional development support no te provisionally certificated teachers (PCTs), e te au pu'āpi'i tei terēni'ia i te 'enua-i-tai, kia tāru atu i teta'i tāto'u'anga ki runga i te 'āpi'i'anga, e te tāmou'anga 'āpi'i, tei tau ki te Common Practice Model.	» E tau te aronga 'anga'anga no te tuātau ki mua, kia 'ākaāri mai i te turanga tūkētūkē o te 'iti tangata Aotearoa. » Te 'akakite mai nei te rave'ia'anga te au 'akamāro'iro'ia'anga 'ōu te tupu nei e, na roto i te 'akarongo'anga ki te au manako o te aronga e 'akakoro nei matou i te turu, na roto i te au 'akamāro'iro'ia'anga 'ōu, e pu'apinga atu ei pa'a te aronga te ka turu'ia.
<b>2.5.2</b>	'Ōronga i te arataki'anga, i te turu i te au pu'āpi'i turuturu (mentor teachers) kia 'akatupu i te mārama'anga i te au mea i roto i te maths, e te kite 'āpi'i'anga (pedagogical knowledge) a te PCT, tei tau ki te Common Practice Model.	
<b>2.5.3</b>	'Ākara matatio, ma te 'akapapa 'aka'ōu i teta'i kaveinga 'akatanotano'ia (coordinated strategy) i te 'akamāro'iro'ia i te aronga koi tū ua ake nei i te pēpa maths, e te aronga tukatau, kia terēni, kia riro mai ei au pu'āpi'i.	

<b>3.1 Turu'ia te au turanga 'āpi'i' punanga, e te au 'āpi'i, kia 'anga'anga ta'okota'i ki roto i te kōpu tangata, iwi, e te au 'oire tangata na roto i te au peu/'ākono'anga kare e ngaro, i te 'akaparerau'ara'anga i te tāmou'anga maths a te tauria.</b>		
<b>3.1.1</b>	'Anga'anga ta'okota'i ki roto i te kōpu tangata, i te 'akapapa'anga, e te 'ōronga'anga i te au rāvenga tauturu, e te arataki'anga, i te tauturu ia ratou kia riro mai ei tokorua'anga mātūtū i te 'akaneke'anga (progress) i te maths o ta ratou tauria ki mua.	» Ka rave'ia te 'anga'anga i te 'akapāpu, kia tau te 'anga'anga tu'atu'a'anga i te au rāvenga tauturu, e te arataki'anga i te kōpu tangata na roto i te au turanga 'āpi'i, te au turanga turu i te kōpu tangata, e te au rāvenga i runga i te 'ātuitui roro uira.
<b>3.1.2</b>	Ka turu te Te Mahau ( <a href="https://temahau.govt.nz">https://temahau.govt.nz</a> ) i te au 'ātuitui'anga na roto i te au 'āpi'i' i roto i te vaka, i te 'akatupu i te au 'akamāro'iro'ia'anga a te 'oire tangata, e te iwi, te turu ra, ma te 'akatupu i te tāmou'anga maths tei kite takere ia (maths learning experiences), no ratou tikāi, te tauria Māori, e to te Moana-nui-o-Kiva.	» E tau, kia patu'ia te 'anga'anga ki runga i te au 'ākara'anga pu'apinga, e te au rāvenga aruaru, tei roto takere i te turanga, pērā katoa, te au pu'apinga mei roto mai i te au rāvenga pu'apinga a te tatau'anga, e te tātā'anga (literacy).
<b>3.1.3</b>	'Ōronga i te arataki'anga ki te Resource Teachers Learning and Behaviour (RTLBs), no runga i te turu'anga i te au tu pu'apinga ki te maths, e te au turanga 'ārikiriki i roto i te pi'a 'āpi'i, no te tāmou'anga maths.	
<b>3.2 'Akatakataka meitaki ia te au 'irinaki'anga ka 'inangaro'ia, no te au ara kī'ia i te maths, e te ora'anga 'anga'anga-moni i roto i te maths.</b>		
<b>3.2.1</b>	'Anga'anga ta'okota'i ki roto i te au 'ona 'anga'anga, e teta'i atu, i te 'akairo, e te 'akakite i te turanga o te tangata 'akaruke 'āpi'i no runga i te maths, e te au mea anoano'ia no te kaveinga o te tangata 'akaruke 'āpi'i, e te ora'anga 'anga'anga-moni.	» Ka rauka te 'āpi'i'anga no runga i te au ora'anga 'anga'anga moni, i te umuumeu i te tauria ki roto i te au ara kī'ia e te maths.
<b>3.2.2</b>	'Anga'ia teta'i 'akako'uko'u'anga, te arataki ra, e te turu ra i te au kaveinga tāmou'anga 'āpi'i- ei tā'anga'anga na te tauria, e to ratou au kōpu tangata, e pēra katoa, te au pu'āpi'i, e te au kumiti 'āpi'i.	
<b>3.2.3</b>	'Anga'anga ta'okota'i ki roto i te kōpu tangata, iwi, e te au 'oire tangata, i te 'akatupu'anga i te au turu, e te au 'akamāro'iro'ia'anga, te aruaru ra i te turanga 'āpi'i, kī'ia e te maths, e te kaveinga 'anga'anga moni no te tauria Māori, e to te Moana-nui-o-Kiva.	





## Te Tu'anga Tāto'u'anga 4: E turanga turu i te tāmou'anga 'āpi'i, te 'anga'anga ra no te au tauira katoatoa

<b>3.3</b>	<b>'Akatupu'ia te au rāvenga tauturu, arataki'anga, e te au rāvenga turu i te au turanga 'āpi'i, i te ripōti'anga ki te kōpu tangata, no runga i te neke'anga (progressing) o ta ratou tauira ki mua, ei tu'anga no te rekōti tāmou'anga 'āpi'i.</b>	
<b>3.3.1</b>	'Anga'anga ki roto i te au turanga 'āpi'i, e te kōpu tangata, i te 'akatupe i te ripōti'anga mātūtū no runga i te neke'anga ki mua (progress), e te pu'apinga.	» Ka rauka teia 'anga'anga i te 'akaneke'ia (progressed) ei tuku'anga ki roto i te au rekōti tāmou'anga 'āpi'i (records of learning), te ka āru i te tauira, tei 'akatupe takere ia.
<b>3.4</b>	<b>Turu'ia te au nekeneke'anga meitaki no te tauira, e te kōpu tangata na roto, e i roto i te au 'āpi'i.</b>	
<b>3.4.1</b>	'Akamāro'iro'ia te 'anga'anga ta'okota'i na roto i te au turanga, e te komakoma'anga, i te turu i te au nekeneke'anga (transitions) o te tauira, e to ratou kōpu tangata.	» E mānganui ua atu te au nekeneke'anga (transitions) o te tauira, e to ratou kōpu tangata, na roto i te katoa'anga o te ara tāmou 'āpi'i. Tei rotopu teta'i o teia, i te au turanga (teia te 'ākara'anga, te neke'anga mei te 'āpi'i punanga ki te 'āpi'i, me kore ra, te neke'anga ki te 'āpi'i tuarua), e tei roto teta'i (teia te 'ākara'anga, te neke'anga i te tāto'u'anga no te au 'āpi'ipi'i'anga o te tauira pākarihari ake i roto i te 'āpi'i tuarua).
<b>3.4.2</b>	Rave ua atu rāi, i te 'anga'anga 'akatupe'anga i teta'i School Entry Kete, i te turu i te au nekeneke'anga mei roto i te 'āpi'i punanga, ki te 'āpi'i.	» Ko te 'anga'anga'anga ta'okota'i ki roto i te au tū tangata, te mea pu'apinga, i te turu'anga i te tauira, pērā katoa i te kōpu tangata, te iwi, e te au mēma o te 'oire tangata, tei roto i te 'ātuitui'anga turu i te tauira.
<b>3.4.3</b>	'Akatupu ma te tā'anga'anga i te au ko'u nekeneke'anga, i te turu i te kōpu tangata, tauira, e te pu'āpi'i.	
<b>3.4.4</b>	'Akapapa ta'okota'i (co-design) ma te 'akatupe i te au rāvenga tauturu maths, no te tauira, e te kōpu tangata kare e no'o tinamou ana (transient), e/me kore ra, e mānganui ua atu te au pārunu'anga tūkētūkē, ki te tāmou'anga maths.	
<b>3.5</b>	<b>'O'ora'ia ki va'o, kia kite te 'iti tangata, i te pu'apinga o te numeracy, e te au rāvenga ka 'ōronga atu te au ara kī'ia e te maths.</b>	
<b>3.5.1</b>	'Akatupu'ia teta'i 'akamāro'iro'ia'anga na roto i te basileia, i te 'akakakite i te pu'apinga o te critical numeracy, e te mathematics, e te statistics no Aotearoa katoatoa.	» Tei roto i teia, teta'i tāto'u'anga, ki runga i te tauira Māori e to ratou kōpu tangata, e te aronga tāmou 'āpi'i, no te Moana-nui-o-Kiwa, e to ratou au kōpu tangata.

<b>4.1</b>	<b>'Anga'ia teta'i turanga 'ātuitui'anga ponuiā'au, no te tauira na roto i te kaveinga o ta ratou 'āpi'i.</b>	
<b>4.1.1</b>	'Akatupu'ia teta'i 'ātuitui'anga ponuiā'au, pu'apinga, e te tau, te turu ra i te tauira, kia 'akairo'ia no teta'i atu turu tāmou'anga 'āpi'i.	» Ka pange te nekeneke'anga (progression) pu'apinga i te au 'ātuitui'anga ponuiā'au i roto i te turanga 'āpi'i.
<b>4.1.2</b>	'Akairo'ia te au turanga pu'apinga, te 'akaāri mai ra e, e mea tau ki te nekeneke'anga (progression) o te tauira ki mua, kia 'ātui'ia ki teta'i atu turu.	» Tei roto i teia, te tāmānako'anga i te 'anga'anga a te School Entry Kete, e te anoano o te tauira, te tomo atu ra ki roto i te NCEA co-requisite.
<b>4.1.3</b>	'Akapu'apinga'ia atu, te tomo'anga ki roto i te turu'anga tau, no te au tauira o teta'i ua atu mata'iti, e anoano ke atu to ratou.	» Ka tāmānako'ia te 'anga'anga a te Learning Support Coordinator, i te ko'iko'i 'akakitekite'anga, e te kimikimi'anga rāvenga no teta'i atu turu, te vai ra pa'a no te katoatoa, tei 'akakoro'ia, me kore ra, no teta'i anake.
<b>4.2</b>	<b>'Akapapa e te akatupe i te au turu'anga no te additional maths, na roto i te katoa'anga o te ara tāmou'anga 'āpi'i, e te 'akapāpu'anga e, te tau ra ki te Common Practice Model.</b>	
<b>4.2.1</b>	'Akatupu'ia teta'i kimikimi'anga kite, e teta'i papa no runga i te au kite takere no runga i te rāvenga 'akaviviki atu i te maths (maths accelerative practices), ma te tā'anga'anga i te reira, i te 'akapapa i teta'i 'ākara'anga (model) turu i te additional maths, no te tauira, na roto i te kaveinga tāmou 'āpi'i.	» Ka tāmānako teia i te au anoano o te tauira, na roto i te katoa'anga o te kaveinga tāmou'anga 'āpi'i, e te pu'apinga i te kite'anga vave, e te rave'anga i te anoano, (te 'ātui'ia ki te priorities 2 e te 3 i roto i te <i>Learning Support Action Plan</i> ). Ka rave mai teia i te kite, tei rauka mai, mei roto i te au turu'anga e vai nei, pērā katoa te Accelerating Learning i roto i te Mathematics, e te porokarāmu no te Mathematics Support Teacher.
<b>4.2.2</b>	'Akamata'ia te au turanga tukata (specialist roles) ki roto i te au 'āpi'i, i te rave i te tāmou'anga 'āpi'i 'akatanotano'ia, e te tāmou'anga viviki, no teta'i anake (tailored and individualised accelerative learning), te tāto'u ra ki runga i te turu'anga i te tauira neurodiverse (pērā katoa ratou tei tū'ia e te dyscalculia), e te tauira te tārorokakā'ia ra e, kare e pāti i te NCEA co-requisite.	» E iti ua te tāre'anga o te numeracy, e te turu'anga maths, i teia 'ati'anga, e, ka roa rāi te tuātau, i te 'akapapa'anga, e te tā'anga'anga'anga i teta'i 'ākara'anga turu (support model) te ka rauka i te rave, i te au mea e 'inangaro'ia nei na roto i te katoa'anga o te kaveinga tāmou'anga 'āpi'i.
<b>4.2.3</b>	Tuku i teta'i atu turu'anga na rungā'o, no te au tauira i roto i te 'āpi'i tuarua, te 'ēkōkō'ia ra e, kare e pāti i te NCEA co-requisite.	» Ka 'ākara meitaki, e ka tauturu te au turu'anga katoatoa i te neurodiverse i roto i te tauira.
<b>4.2.4</b>	'Anga'ia te au rāvenga, no te au turu'anga pu'apinga, e te au rāvenga 'āpi'i'anga, i te tāmou'anga maths.	» Ka tāmānako te turu'anga i te au anoano tūkētūkē o te tauira, pērā katoa, te tāmānako'anga i te au anoano e mānganui. » Kua 'akatinamou'ia te kimi'anga rāvenga 'ōu no te Literacy, e te Numeracy Support in Schools, i te mata'iti (2021/22), ei turu i te au tauira mua, no te tāre'anga NCEA co-requisite. » Te 'akakite mai nei te kimikimi'anga kite no runga i te turanga 'akapae'anga i te tamariki kite, e te 'akapupu'anga (streaming and fixed ability grouping), kia rave'ia te turu'anga ki roto i te pi'a 'āpi'i.

## Tu'anga Tāto'u'anga 5: E turu ana te vāito'anga i te au turanga te turu ra i teta'i turanga tāmou'anga 'āpi'i

<b>5.1</b>	<b>'Ākara matatio ma te 'anga i teta'i ko'u rāvenga vāito, no te au 'āpi'i.</b>	
<b>5.1.1</b>	'Akatakataka meitaki, ma te 'akatupu, i te au rāvenga vāito, e te au rāvenga 'āpi'i, no te 'āpi'i'anga, kia tau ki te Common Practice Model.	<ul style="list-style-type: none"> <li>» Tei roto i teia te 'anga'anga no runga i te 'akatupu'anga, i teta'i School Entry Kete, i te turu i te nekeneke'anga meitaki i roto ki te 'āpi'i, e te 'aka'ou'anga i te e-asTTle, kia tano no te vāito'anga i roto i te basileia, kia tau ki te NZC tei 'aka'ou'ia, e te au nekeneke'anga 'ou ki mua (progressions).</li> <li>» Ka tāmānako'ia te pu'apinga o te kite 'ātuitui uira (artificial intelligence), e te 'smart insights', i te tauturu i te tōpiri'anga i te vā kia tau, te 'akapu'apinga'anga i te 'aka'aere'anga, e te tāmāmā mai i te 'apainga i runga i te pu'āpi'i.</li> <li>» Ka 'akatanotano'ia te au rekōti no runga i te tāmou'anga 'āpi'i, ma te mou piri ki te vāito'anga mātūtū.</li> </ul>
<b>5.2</b>	<b>'Anga'ia teta'i kaveinga vāito, i te 'ākara meitaki i te pu'apinga i te rave'ia'anga te 'anga'anga (actions), ma te ma'ani i te au 'ākatanotano'anga ki runga i te 'akairo meitaki, kia pu'apinga te turanga no te tuātau ki mua.</b>	
<b>5.2.1</b>	'Anga'anga ta'okota'i ki roto i teta'i atu, i te 'ākara meitaki, e te vāito, i te pu'apinga o te Maths Action Plan ki runga tikāi i te Māori, te aronga tāmou 'āpi'i no te Moana-nui-o-Kiva, e te tauri e anoano ke atu to ratou, no te tāmou'anga 'āpi'i.	<ul style="list-style-type: none"> <li>» E tau te kite no te 'enua-i-tai, kia 'akamātūtū'ia atu ki te au tātā'anga tukatau, e te 'akakitekite'anga tau, ki ta tatou e rave nei i roto i Aotearoa.</li> <li>» Na roto i te 'anga'anga ta'okota'i'anga o te Māraurau, e te Education Review Office, e teta'i, refreshed National Monitoring Study of Student Achievement will enable access to quality information on system performance.</li> <li>» Na roto i te 'akapapa'anga o te au rāvenga tauturu, arataki'anga, e ka tupu te au rāvenga na roto i te tuātau, no runga i te kimikimi'anga kite, e te 'akairo kia tau te rave'ia nei no te 'anga'anga (fit-for-purpose).</li> </ul>
<b>5.2.2</b>	Tu'atu'a'ia, ma te tauīū, i te 'akakitekite'anga, e te kite no runga i te 'āpi'i'anga, tāmou'anga 'āpi'i, e te vāito'anga i te maths, na roto i te Online Curriculum Hub 'ou, e tetai atu au 'ātuitui'anga 'ou, e te au 'ātuitui'anga e vai nei.	
<b>5.3</b>	<b>'Akatupu i te au rāvenga pu'apinga, no runga i te 'āpi'i'anga, tāmou'anga, e te vāito'anga i te maths, na roto i te ara 'āpi'i.</b>	
<b>5.3.1</b>	'Akatupu'ia teta'i kaveinga kimikimi'anga kite, i te 'akatanotano i te au vā e kite'ia nei, i roto i ta tatou papa'anga no runga i te au rāvenga pu'apinga.	<ul style="list-style-type: none"> <li>» Te anoano'ia nei teta'i tāto'u'anga ta'okota'i'ia no runga i te kimikimi'anga kite, i te neke'anga ua atu rāi i ta tatou turanga ki mua, te 'ārikiriki ra i te mātauranga Māori, te kite o te Moana-nui-o-Kiva, e te ethnomathematics.</li> </ul>
<b>5.3.2</b>	'Anga'ia teta'i pūtē moni i te 'akatupu kia tupu te arataki no runga i te 'āpi'i (curriculum leadership), patu'ia teta'i mārāma'anga tu'atu'a'ia no runga i te au rāvenga pu'apinga (effective practice), e te tāru atu ki roto i Te Poutāhū knowledge and evidence base.	





**Te Tāhuhu o  
te Mātauranga**  
Ministry of Education

**Te Kāwanatanga  
o Aotearoa**  
New Zealand Government

[education.govt.nz](https://www.education.govt.nz)