



Te Poutāhū
Curriculum Centre

TE REO MĀORI

Literacy & Communication and Maths Action Plans

ĀKUHATA 2022



**Te Tāhuhu o
te Mātauranga**
Ministry of Education

**Te Kāwanatanga
o Aotearoa**
New Zealand Government



He mea whakaputa e Te Tāhuhu o te Mātauranga, Aotearoa, Ākuhata 2022.
Mātauranga House, te 33 o te Tiriti o Bowen
Pouaka Poutāpeta 1666, Thorndon
Te Whanganui a Tara 6140, Aotearoa.

www.education.govt.nz

Nō te Karauna te manatā © 2022

ISBN 978-1-77697-166-4 (ā-Tā)

ISBN 978-1-77697-167-1 (ā-Ipurangi)

Ngā Wāhanga

Te Whakatakinga	5
Ngā Wāhanga Arotahi e Rima o ngā Mahere Whakatinana	6
Ngā take mātāmua tuatahi mō te whakatinana i ngā Mahere Whakatinana	8
Te whakapakari i te reo matatini me te whakawhiti kōrero, i te pāngarau hoki i te roanga o ngā mahi	8
Te Waihanga o te Common Practice Model.....	8
Te arotake i ngā ratonga me ngā tautoko o nāiane.....	8
Te kōkiri i ngā mahi ā hua noa tētahi pūnaha kei te ako haere	8
Ngā hononga o roto i te pūnaha mātauranga	9
Common Practice Model	10
He Whakamārama	10
Ngā mahi e waihangaia ai te Common Practice Model.....	11
Ngā ara ako i te reo matatini me te whakawhiti kōrero, i te pāngarau hoki	11
Te titiro whānui ki ngā mahi ā-rautaki mō Te Reo Matatini me te Whakawhiti Kōrero	12
Te Wāhanga Arotahi 1.....	14
Te Wāhanga Arotahi 2	17
Te Wāhanga Arotahi 3	18
Te Wāhanga Arotahi 4	20
Te Wāhanga Arotahi 5	22
Te titiro whānui ki ngā mahi ā-rautaki mō te Pāngarau	24
Te Wāhanga Arotahi 1	26
Te Wāhanga Arotahi 2	29
Te Wāhanga Arotahi 3.....	31
Te Wāhanga Arotahi 4	33
Te Wāhanga Arotahi 5.....	34



Te Whakatakinga

I te Māehe 2022, i whakarewa ai Te Minita Tuarua o te Mātauranga, a Jan Tinetti i te **Literacy & Communication and Maths Strategy (te Strategy)**. He urupare te Strategy ki te hiahia kia kaha ake te hāpai a tā tātou pūnaha mātauranga i ngā ākonga puta noa i ngā tau tōmua o te ako, me ngā tau i te kura hoki. Ko tōna whāinga ko te whakairo i tētahi pūnaha e kaha tautoko ai i ngā kaiako me ngā kaihautū ki te kite, ki te urupare hoki ki ngā hiahia kanorau o ngā ākonga, kia whai wāhi atu ai hoki ngā ākonga ki ngā arawātea katoa e koke whakamua ai, e angitu ai hoki i te reo matatini me te whakawhiti kōrero, i te pāngarau hoki.¹ E noho tūāpapa ana ēnei wāhanga e ū katoa ai, e whai wāhi atu ai hoki ngā ākonga katoa ki ā rātou mahi akoako me ō rātou pāpori, e tutuki ai hoki ō rātou wawata e puritia nei e rātou mō rātou anō, mō ō rātou hapori anō hoki.

Ka tīmataria tā tātou whai i te ara tautika me te ara hiranga mā te tāutu i ngā panonitanga ki te pūnaha me whai hei whakapakari i ngā mahi whakaako, i ngā mahi akoako, i ngā mahi aromatawai hoki i te reo matatini me te whakawhiti kōrero, i te pāngarau hoki. Ka whakatakotoria ki *Te Literacy & Communication and Maths Action Plans* (ngā Mahere Whakatinana) ngā mahi ka āta mahia e mātou ā ngā tau kei mua i te aroaro kia tutuki ai tā te Strategy e whai nei. I arahina ēnei mahi e ngā mōhiotanga i tukua mai ai ki a mātou e te rāngai, e ētahi atu tautōhito, e te hunga whaipānga hoki i te wā o ngā hui torotoro mō te Strategy.

Ka takoto ki ngā Mahere Whakatinana ngā tino hātepe e whakamahuki ai i te āhua o ngā rautaki whakaako e kauawhi ana, e hāngai ana hoki ki ngā taunaki; e whakapakari ai i ngā ara tautoko i ngā āheinga puta noa i te ara ngaio; e whakaniko ai i ngā hononga i waenga i te pūnaha mātauranga, i te whānau, i ngā iwi, i ngā hapori hoki; e whakaū ai hoki i ētahi atu tautoko i ngā mahi akoako me ētahi atu rauemi aromatawai e mana ōrite ana hei āwhina i ngā kaiako kia whaihua tā rātou kite, tā rātou urupare hoki ki ngā hiahia o ngā ākonga. Me mātua mahi tahi i roto i ēnei mahi; koia e honohono nei ngā Mahere rautaki ki ngā mahi whānui puta i te katoa o te ara e whakahaerehia ana e Te Poutāhū | Curriculum Centre. E whai wāhi atu ana ki tēnei *te Mātaiaho* (NZC), ngā panonitanga ki te NCEA

(pērā i ngā tautokorua hou o te reo matatini me te pāngarau), te whakatinana tonutanga hoki o te *Early Learning Action Plan*.

Mō te angitu o ngā Mahere Whakatinana, kei te āhua o tā tātou ū ki te whakapakaritanga o ngā putanga ā-mātauranga o ngā ākonga katoa me ō rātou whānau, otirā ko ērā kāore nei e rawaka ana te tautokona e tā tātou pūnaha. Ka wātea mai ētahi arawātea kia mahi tahi ki te hoahoa, ki te whakatinana hoki i ngā mahi whānui i a tātou e koke whakamua ana, e ū ai te mōhio e hāngai ana ki ngā hiahia me ngā horopaki o te hapori. E hīkaka ana mātou kia mahi tahi tātou e tutuki haere ai ēnei whāinga, i a tātou e whakangingiha ana anō i te kaingākautanga o ā tātou ākonga, o ō tātou kaiako hoki ki te reo matatini me te whakawhiti kōrero, ki te pāngarau hoki.

He pārongo atu anō mō te Strategy e noho hāngai ana ki ēnei Mahere Whakatinana kei tā mātou pae tukutuku:

<https://www.education.govt.nz/literacy-and-communication-and-maths-strategy>

¹ **Whakamahia ai te 'Pāngarau'** i te Strategy me ngā Mahere Whakatinana hei kupu whānui mō te whakakotahitanga o ngā kaupapa, o ngā pūkenga, o ngā pūkenga tūāpapa, o ngā māramatanga hoki e hāngai ana ki ngā āhuatanga katoa o te tau, o te pāngarau, o te tauanga anō hoki.

Ngā Wāhanga Arotahi e Rima o Ngā Mahere Whakatinana

E mōhio ana mātou e maha ana ngā wāhanga e whai pānga ana ki ngā mahi me ngā putanga o te whakaako, o te akoako hoki. Kāore he panonitanga kotahi ka taea hei whakatau i ngā panonitanga mīharo e tika ana mō te reo matatini me te whakawhiti kōrero, mō te pāngarau hoki. Pērā i tā ngā Wāhanga Arotahi e rima e whakatakoto nei, he pūnaha te āhua o ā mātou mahi hei whakatinana i te Strategy, nā runga hoki i ngā pūtea tautoko a te Kāwanatanga hei tuku moni mō te kōkiritanga o ngā take mātāmua tuatahi.

E mōhio ana mātou e maha ana ngā wāhanga e whai pānga ana ki ngā mahi me ngā putanga o te whakaako, o te akoako hoki.² Kāore he panonitanga kotahi ka taea hei whakatau i ngā panonitanga mīharo e tika ana mō te reo matatini me te whakawhiti kōrero, mō te pāngarau hoki. Pērā i tā ngā Wāhanga Arotahi e rima e whakatakoto nei, he pūnaha te āhua o ā mātou mahi hei whakatinana i te Strategy, nā runga hoki i ngā pūtea tautoko a te Kāwanatanga hei tuku moni mō te kōkiritanga o ngā take mātāmua tuatahi.

TE WĀHANGA AROTAHI 1:

Kia mārama kehokeho ngā kawatau mō te whakaako me te ako hei ārahi i ngā mahi e whaihua ana

Ko te whāinga whānui o te Wāhanga Arotahi 1 ko te whakataki i tētahi māramatanga e ōrite ana o ngā mātauranga me ngā pūkenga e tāpua ana o te reo matatini me te whakawhiti kōrero, o te pāngarau hoki me mātua whai ngā ākonga. E whai wāhi ana ki tēnei ngā mahi kua tīmata kēhia i te whakahoutanga o te NZC hei whakamārama i ngā kawenga o te reo matatini me te whakawhiti kōrero, o te pāngarau hoki e noho tūāpapa ana ki ngā kaupapa ako katoa. Ka waihanga mātou i te Common Practice Model (kei ngā whārangi 10-11 ngā taipitopito) kia mārakerake ai, kia hāngai ai hoki ki ngā taunaki te āhua o ngā kupu ārahi mō ngā ara kia whaihua ai te whakaako o te reo matatini me te whakawhiti kōrero, o te pāngarau hoki i ngā tau tōmua o te ako ki te Tau 13. Kei te waihanga hoki mātou i ngā rauemi me ngā kupu ārahi e pai ake ai te tautokona o ngā kaiako me ngā ākonga, tae atu ki ngā ākonga e kanorau ana ngā

āhuatanga o te ahurea me te reo. Mā ēnei mahi e māia ai ngā kaiako ki te tautoko i ngā ākonga ki te koke whakamua, ki te angitu hoki.

TE WĀHANGA AROTAHI 2:

Ngā tautoko i te āheinga i te roanga o te ara mahi kia whakapakari i ngā kaiako whaihua kia tutuki ai ngā hiahia o ngā rōpū ākonga kanorau.

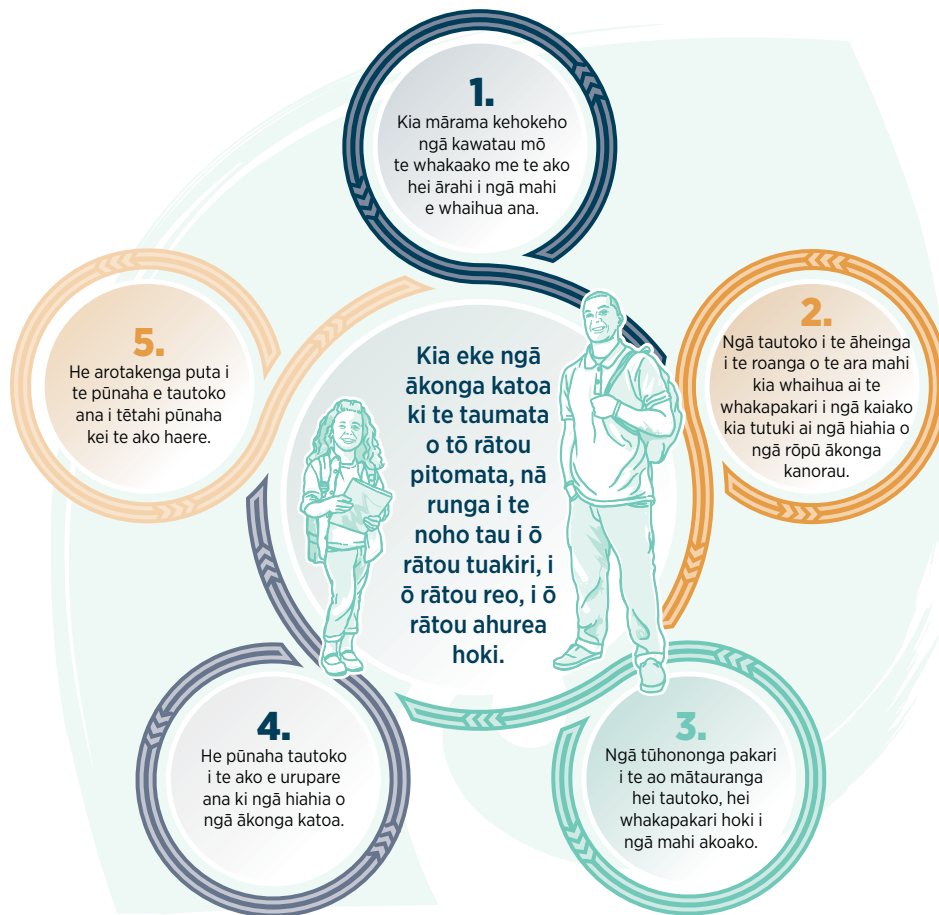
Ko te whāinga whānui o te Wāhanga Arotahi 2 ko te whakaū i ngā tautoko e hāngai ana ki ngā taunaki mā ngā kaiako me ngā kaihautū i te reo matatini me te whakawhiti kōrero, i te pāngarau hoki puta i ngā wāhi ako, i ngā rohe, i te motu hoki. E whai wāhi ana ki tēnei te whakapakari i ngā mōhioatanga, i ngā kōtuinga o te mahi tahi, i ngā tautoko i ngā āheinga, i ngā arawātea hoki ki te whakangungu kei ngā kaiako me ngā kaihautū, tae atu hoki ki te whakarite i ngā whakangungu (PLD) me te Initial Teacher Education (ITE) e hāngai ana ki te Common Practice Model. Mā tēnei e māia ake ai, e rite ake ai hoki ngā kaiako ki te whakahaere i ngā mahi whakaako e kounga ana ki ā rātou ākonga.

TE WĀHANGA AROTAHI 3:

Ngā tūhononga marohi i te ao mātauranga hei tautoko, hei whakapakari hoki i ngā mahi akoako

Ko te whāinga whānui o te Wāhanga Arotahi 3 ko te tautoko, ko te whakapakari hoki i te mahi tahi i waenga i ngā wāhi ako me ngā whānau, ngā iwi, ngā hapori hoki, kia māmā ake ai tā ngā

2 Kia mōhio mai, kei te hāngai te wā o ētahi mahi ki te tukunga haerehanga o ngā pūtea me te whakataunga o ngā kaupapa here.



ākonga eke ki ngā taumata o tō rātou pitomata. E whai wāhi ana ki tēnei te whakatairanga i ngā whakawhitinga o ngā ākonga (i waenga i ngā wāhi akoako, i te roanga hoki o ngā ara akoako), te whakapakari i ngā tukanga pūrongo me ngā āheinga o te tuku pārongo ki ngā whānau. Mā tēnei e whakairohia ai tētahi pūnaha mātauranga e kaha ake nei te tūhono ki te hapori e hāpaitia ake ana e ia, te urupare hoki ki ngā hiahia kanorau o ngā ākonga.

TE WĀHANGA AROTAHI 4: He pūnaha tautoko i te ako e urupare ana ki ngā hiahia o ngā ākonga katoa

Ko te whāinga whānui o te Wāhanga Arotahi 4 ko te whakapūmau i te mōhio kei te rite tonu te tautuhia o ngā hiahia kanorau o ngā ākonga, te mārama ki aua hiahia, te whakaea hoki i aua hiahia. E whai wāhi ana ki tēnei te arotake i ngā momo tautoko kua whakarite kētia e mōhiotia ai kei te hāngai ki te Common Practice Model, me te waihanga i tētahi pūnaha o ngā kupenga whakahaumarua e arahina ana e ngā taunaki me ngā momo tautoko āpiti kua whakahāngaitia, e motuhake ana hoki hei whakaea i ngā hiahia

kanorau o ngā ākonga i te roanga o te ara. Mā tēnei e wātea ai ki ngā ākonga katoa te tautoko e tika ana, i te wā e tika ana hoki, e matomato ai tō rātou tipu, e ārai-kore ai hoki ngā ratonga ka wātea ki a rātou.

TE WĀHANGA AROTAHI 5: He arotakenga puta i te pūnaha e tautoko ana i tētahi pūnaha kei te ako haere

Ko te whāinga whānui o te Wāhanga Arotahi 5 ko te mōhio ka whakaūria ngā mahi me ngā rauemi aromatawai e kounga nui ana puta i te pūnaha, me te whakatau i ngā hurihanga urupare e kaha ana e ārahi ai i te whanaketa tonutanga ōna. E whai wāhi ana ki tēnei te arotakenga o ngā rauemi aromatawai o nāianei puta i te ara e mōhiotia ai kei te hāngai ki te Common Practice Model, me te waihanga i ā mātou tukanga arotake, tukanga rangahau hoki. Ka taka te wā, mā ēnei mahi e whakataki ngā mahi me ngā rauemi aromatawai e tuku māramatanga ai hei tautoko i ngā kaiako kia mōhio, kia urupare hoki ki ngā hiahia me ngā wawata o ngā ākonga me ō rātou whānau. Ka puta he puna mōhiotanga ka wātea, ka rite tonu hoki te tāmatahia, hei tautoko i te whaihua o te whakaako, i ngā mahi ārahi hoki i roto i te horopaki o Aotearoa.

Ngā take mātāmua tuatahi mō te whakatinanatanga o ngā Mahere Whakatinana

Te whakapakari i te reo matatini me te whakawhiti kōrero, i te pāngarau hoki i te roanga o ngā mahiy

Kua tīmata kē ngā mahi i te ara o ngā tau tōmua o te ako me ngā tau i te kura i ētahi o ngā mahi whakahirahira e whai ana kia pūmau tā ngā ākonga katoa rongō i te ako e tōtōpū ana, e urupare ana hoki hei tautoko i a rātou ki te ako tonu, ki te angitu hoki i ngā wāhanga matua. E whai wāhi atu ana ki tēnei te waihanganga o ngā taputapu mō ngā rautaki whakaako me te aromatawai i ngā tau tōmua o te ako, i *te Mātaiaho*, i te whakatinanatanga hoki o ngā tautokorua mō te reo matatini me te pāngarau.

Te Waihanganga o te Common Practice Model

He mahi tāpua tēnei e mōhiohia ai e rite ake ana ngā kaiako me ngā kaihautū ki te hāpai i ā rātou ākonga me ō rātou whānau. Mā tēnei e iti iho ai te wāhanga ki te tūponotanga i roto i te whakaako me te ako i te reo matatini me te whakawhiti kōrero, i te pāngarau hoki, e reretahi ake ai, e ōrite ake ai hoki te whakaako, te ārahi, me ngā mahi aromatawai hoki. Mā te Common Practice Model ka māraakerake ai ngā momo akoranga e mātāmua ana, me ngā rautaki whakaako pai katoa hoki e whaihua ai te urupare ki ngā hiahia kanorau me ngā wawata o ngā ākonga. Mā te whakamātāmua o tēnei e kaha ake ai te tautokona o ngā kaiako me ngā kaihautū puta i ngā tau tōmua o te ako me ngā kura kia kouna nui ai tā rātou tuku i ngā mahi akoako, i ngā mahi whakaako hoki o te reo matatini me te whakawhiti kōrero, o te pāngarau hoki ki ā rātou ākonga.

Tirohia ngā [Whārangi 10-11](#) e whai pārongo ai anō mō te Common Practice Model.

Te arotake i ngā ratonga me ngā tautoko o nāianei

I te pae tata, ka arotake hoki mātou i ngā tautoko āpiti i te akoako, i ngā taputapu aromatawai, i te tukunga hoki o ngā āheinga kei roto kē i te pūnaha. Mā tēnei e mōhiohia ai te hāngai o ēnei ki ngā rautaki me ngā kupu ārahi kei roto i te Common Practice Model. Ka taka te wā, mā ngā mahi e whakatau tētahi pūnaha e whaihua ake ana o ngā momo tautoko āpiti, kia whai āwhina tika ai ngā ākonga, kia māraakerake ai hoki ngā ratonga kei te wātea – tae atu hoki ki ngā wā e tika ana kia whakamahi i aua ratonga. Mō ngā kaiako me ngā kaihautū, he taputapu aromatawai ka puta hei āwhina i a rātou kia rite tonu te kite, te urupare hoki ki te ako haere a te ākonga, he PLD hoki ka wātea i te roanga o te ara ngaio hei tautoko i a rātou kia mārama ki te Common Practice Model, kia whakapakarihia hoki ā rātou mahi.

Te kōkiri i ngā mahi ā hua noa tētahi pūnaha kei te ako haere

E whakaata ana ngā Mahere Whakatinana i tā mātou ū ki te waihanganga o tētahi pūnaha e ako ana – tētahi e urupare ana ki te ao hurihuri, ki ngā kitenga e puta ana, ki ngā hiahia o ā tātou ākonga e panoni haere ana. Ko ētahi wāhanga tāpua e tutuki ai tēnei ko te waihanganga o ngā tukanga rangahau, tukanga aroturuki, tukanga arotake hoki puta i ngā tau tōmua o te ako me ngā kura. Mā te waihanganga o ngā hurihanga pārongo me ngā hurihanga urupare e kaha ana e tautoko ai i te whakatinana tonutanga o ngā mahi, e inea ai hoki te pānga o te Strategy ki ngā kaiako me ngā ākonga. Mā tēnei arotahi e āwhina ai i a mātou ki te whakapakari i te Common Practice Model, e mōhio pū ai kei te hāngai ngā panonitanga o ngā mahi a ngā kaiako ki te puna mātauranga e whakamahi ngātahitia ana, e tipu haere ana hoki mō ngā mahi e whaihua ana ki ā tātou ākonga kanorau.

Ngā hononga o roto i te pūnaha mātauranga

Ka tautoko, ka kōkiri hoki te Strategy me ngā Mahere Whakatinana i ngā mahi whānui e panonihiā ai tā tātou pūnaha mātauranga. Kei te whakatakotoria ki te hoahoa o raro iho nei ngā hononga i waenga i ngā rautaki me ngā mahere Kāwanatanga e tāpua ana.

Child and Youth Wellbeing Strategy

Ko Aotearoa te wāhi pai katoa i te ao hei tamaiti

Ko te tikanga o tēnei ko te ako a ngā tamariki me ngā rangatahi, me tō rātou whanaketanga hoki

Statement of National Education and Learning Priorities (NELP)

Ko te ākongā i te pokapū; kia ārai-kore te whai wāhitanga; kia kōunga te whakaako me te ārahi; te anamata o te ako me te mahi; kei ngā taumata o te ao te mātauranga tūmatanui

Te Mātaiaho

NCEA Change Programme

Early Learning Action Plan (ELAP)

Learning Support Action Plan (LSAP)

Te Strategy me te Mahere Whakatinana o te Reo Matatini me te Whakawhiti Kōrero, o te Pāngarau hoki

The Attendance and Engagement Strategy

Action Plan for Pacific Education

Ka Hikitia - Ka Hāpaitia
Te Rautaki mō te Mātauranga Māori

Te Mahere Mahi Hauātanga

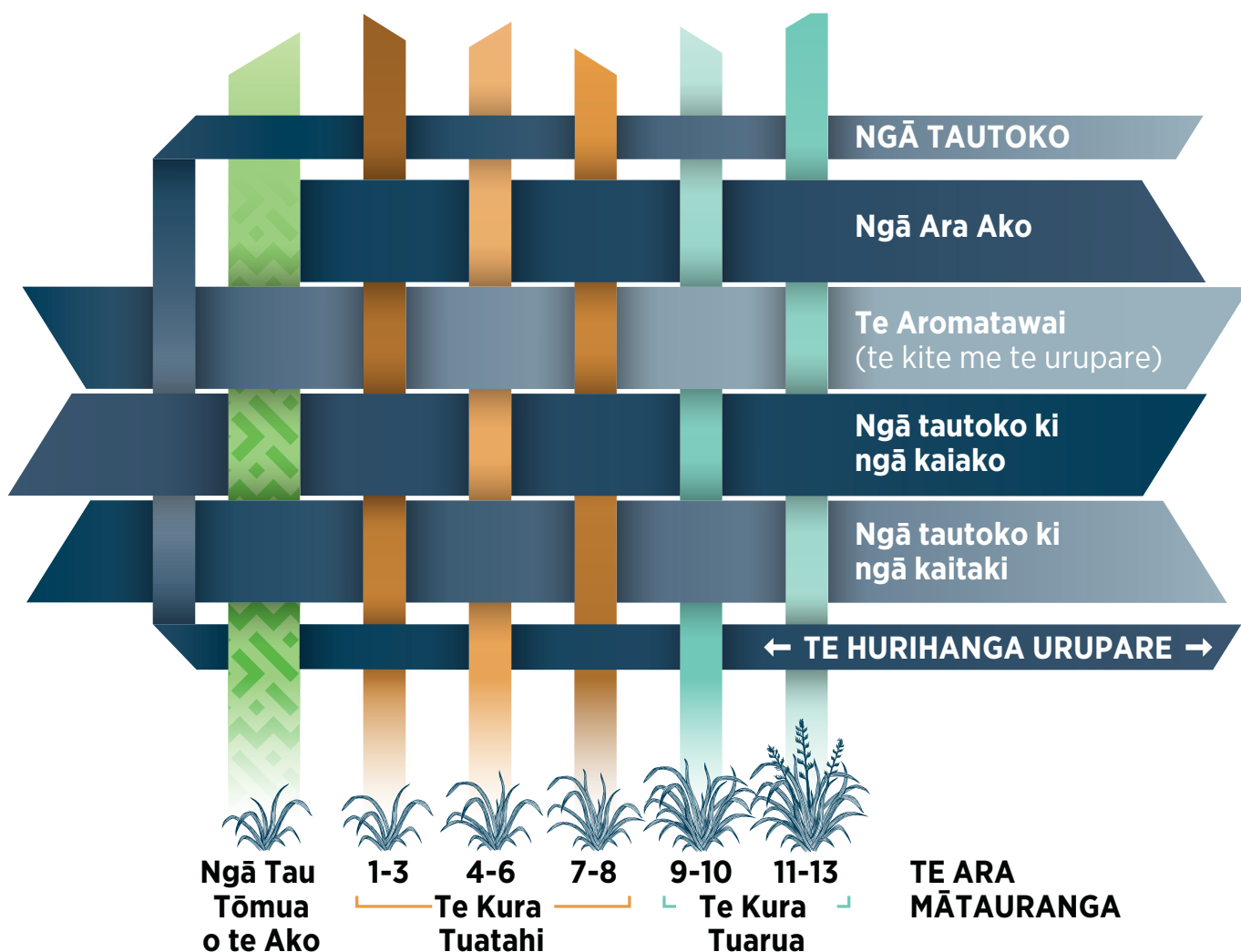
Te Tiriti o Waitangi | The Treaty of Waitangi

Common Practice Model

He Whakamārama

Ka whakatakoto te Common Practice Model (CPM) i ngā mātāpono me ngā āhuatanga ako e hāngai ana ki ngā taunaki e noho ana hei tūāpapa mō te whakaako me te ako i te reo matatini me te whakawhiti kōrero, i te pāngarau hoki i roto i *Te Whāriki*,³ i roto hoki i te *New Zealand Curriculum*. Ka ārahi ia i ngā mahi whakaako, i ngā mahi ako hoki e mōhiohia ana kei te kounga, mō ngā tau tōmua o te ako tae atu hoki ki ngā tau whakamutunga o te kura tuarua, puta noa i Aotearoa.

Ka whakaūria te CPM ki roto i ngā tautoko me ngā rauemi, ki roto i ngā whakangungu (PLD), i ngā hōtaka Initial Teacher Education (ITE) hoki. Mā te CPM kia mārakerake ai, kia ōrite ai hoki ngā mahi ki ngā kaiako me ngā ākonga, kia tōtōpū ai hoki te whakaako me te ako i te reo matatini me te whakawhiti kōrero, i te pāngarau hoki, kia tautoko ai hoki i te tautika me te angitu o ngā ākonga katoa.



³ E hāngai ana ngā tohuroto ki a *Te Whāriki* i te Strategy me te Mahere Whakatinana ki *He whāriki mātauranga mō ngā mokopuna o Aotearoa* | *Early childhood curriculum pathway*. Kāore te Strategy me ngā Mahere Whakatinana i te whakakapi i te ara o *Te Whāriki a te Kōhanga Reo*.

Ngā mahi e waihangahia ai te Common Practice Model

Kāore anō te aronga me ngā kai o roto i te CPM kia tatū. Ka waihangahia ngātahitia, ka hāngai hoki ki ngā wheako o te rāngai, ki ngā kitenga rangahau hou katoa hoki. I a mātou e koke whakamua ana, ka whānui ngā arawātea kia whai wāhi mai ngā tāngata.

Putā i te toenga o te tau 2022, ka mahi tahi mātou ko ngā tautōhito ki te whakatau i tētahi kape hukihuki o te CPM. Ka whānui hoki te toronga ki te rāngai mātauranga mō te kape hukihuki i te Wāhanga 1 me te 2, 2023. I a mātou e whakawhanake ana i te CPM, ka arotake, ka tāmata hoki i ngā momo tautoko PLD kia hāngai ai ki te CPM, kia tautoko ai hoki i ngā kaiako me ngā kaihautū kia mārama ki ngā panonitanga o ngā mahi ka whaihua ki ā rātou ākongā. Ka arotake, ka tāmata hoki mātou i ngā rauemi me ngā tautoko i te marautanga, tae atu ki ngā aromatawai i ngā mahi akoako me ngā taputapu aromatawai.

Ka āta haere mātou e tōtōpū ai te whakatinanatanga o te CPM puta i ngā tau tōmua o te ako me ngā kura, me te mahi i tēnei i te taha o ētahi o ngā wāhanga tāpua o tā mātou hōtaka mahi mō te marautanga me te aromatawai, pērā i te tāmatatanga o te NZC me te whakatakinga o ngā tautokorua NCEA. Mā tēnei e mōhio ai ki te whaihua o te whakahaerenga o ngā panonitanga ā-āhuatanga ako i tohua ai e te CPM, ki te tika o te noho o ngā tautoko i te āheinga, i ngā hurihanga urupare hoki, ka mutu, kei te hāngai te kōtuinga o ngā panonitanga.

Ngā ara ako o te reo matatini me te whakawhiti kōrero, o te pāngarau hoki

E tūhono ana hoki ngā mahi i te CPM ki ngā mahi kua tīmata kētia ki te waihanga i ngā mahi hukihuki o ngā wāhanga ako o te NZC mō te pāngarau me te tauanga, mō te reo Pākehā hoki kua tāmatahia. Kei te noho hāngai te waihanganga o ngā putanga hukihuki o ngā ara ako mō ēnei wāhanga ako ki ngā ara ako o te reo matatini me te whakawhiti kōrero, o te pāngarau hoki ka noho hei wāhanga mō te CPM.

Ka hono ngā ara ako hou ki ngā mahi o te reo matatini me te whakawhiti kōrero, o te pāngarau hoki i ngā wāhanga ako katoa, ka mutu, ka kaha ake te mārakerake me ngā taipitopito mō ngā putanga hirahira o ngā ara ako e tautoko ai i ngā ākongā ki whanake haere i ia wāhanga o te ako. Mā ēnei ara ako e pakari ai te whakahāngaitanga puta i te ara. Ka arahina ērā e ngā mahi i roto i ngā taputapu hou mō ngā mahi whakaako me ngā ara ako i ngā tau tōmua o te ako ka tautoko i te aromatawai arataki me ngā mahi whakaako, ka tohu hoki i ngā tautokorua hou o te reo matatini me te pāngarau mō te NCEA, kia tautokona ai, kia āta whakaritea ai hoki ngā ākongā mō te ara atu ki ngā tau whakamutunga o te kura tuarua, ki tua anō hoki.

He titiro whānui ki ngā mahi ā-rautaki mō te Reo Matatini me te Whakawhiti Kōrero⁴

TE WĀHANGA AROTAHI 1

1.1 Te tāmata i te ako i te reo matatini i te NZC, tae atu ki te whakapakaritanga o te whakawhiti kōrero me te mātau matihiko.

1.2 Te Whakakapi i ngā Learning Progression Frameworks me ngā Literacy Learning Progressions ki tētahi ara ako mō te kura e whakaatu ai i te raupapatanga o te ako mō te reo matatini me te whakawhiti kōrero, hei wāhanga mō te Common Practice Model.

1.3 Te waihanga rauemi, kupu ārahi hoki hei āwhina i ngā kaiako kia mārama, kia whai wāhi atu hoki ki te kokenga o ngā ākonga i te reo ā-waha me te reo matatini i ngā tau tōmua, hei wāhanga mō te Common Practice Model.

1.4 Te waihanga kupu ārahi mō te whakaako i te reo matatini me te whakawhiti kōrero i ngā kura, hei wāhanga mō te Common Practice Model.

1.5 Te waihanga rauemi, kupu ārahi, taputapu hoki hei tautoko i te ako i te reo matatini me te whakawhiti kōrero ki ngā ākonga e kanorau ana ā-ahurea, ā-reo hoki.

TE WĀHANGA AROTAHI 5

5.1 Te arotake, te waihanga hoki i tētahi puna tōtōpū o ngā taputapu aromatawai mā ngā kura.

5.2 Te hanga i tētahi rautaki arotake hei aroturuki i te whaihua o te whakatinanatanga o ngā mahi me te whakahāngai i ngā rawekehanga e hāngai ana ki ngā taunaki, kia whaihua tonu ai ā haere ake nei.

TE WĀHANGA AROTAHI 4

4.1 Te hanga i tētahi puna kupenga whakahaumarū mō ngā ākonga i te roanga o te ara o te kura.

4.2 Te arotake, te waihanga, te whakahāngai hoki i tētahi tautoko āpiti mō te reo matatini me te whakawhiti kōrero puta i te ara ako katoa, kia āta mōhioia ai kei te hāngai ki te Common Practice Model.

4.3 Te waihanga i ngā tautoko e hāngai ana ki ngā taunaki e kitea ai te kanorautanga ā-roro o ngā ākonga (hei taurira, ko te tīpaopao kupu, ko te tīpaopao tuinga, ko te mate whanake neketahi, ko te pūmanawatanga).

1.

Kia mārama kehekehe ngā kawatau mō te whakaako me te ako hei ārahi i ngā mahi e whaihua ana.

5.

He arotakenga puta i te pūnaha e tautoko ana i tētahi pūnaha kei te ako haere.

Kia eke ngā ākonga katoa ki te taumata o tō rātau pitomata, nā runga i te noho tau i tō rātau tuakiri, i tō rātau reo, i tō rātau ahurea hoki.

4.

He pūnaha tautoko i te ako e urupare ana ki ngā hiahia o ngā ākonga katoa.

⁴ Kia mōhio noa, kei te āhua o ngā pūtea me ngā whakataunga kaupapa here ā haere ake nei te wā o tētahi o ngā mahi.



2.

Ngā tautoko i te āheinga i te roanga o te ara mahi kia whāihua ai te whakapakari i ngā kaiako kia tutuki ai ngā hiahia o ngā rōpū ākonga kanorau.

3.

Ngā tūhononga pakari i te ao mātauranga hei tautoko, hei whakapakari hoki i ngā mahi akoako.

TE WĀHANGA AROTAHI 2

- 2.1** Te waihanga, te whakapakari hoki i te arahina o te marautanga mō te reo matatini me te whakawhiti kōrero i ngā taumata pūnaha tāpua e toru: ā-motu, ā-rohe, ā-wāhi ako hoki.
- 2.2** Te hoahoa, te waihanga hoki i ngā whakangungu mā te rāngai e arotahi ana, e pīngore ana, e hāngai ana hoki te tukua ki te Common Practice Model.
- 2.3** Te whakauru i te Common Practice Model ki ngā mahi whakaako, aromatawai, ako hoki e whāia ana e ngā kaituku ITE katoa.

TE WĀHANGA AROTAHI 3

- 3.1** Te tautoko i ngā ratonga mō ngā tau tōmua o te ako me ngā kura kia mahi tahi ai ki ngā whānau, ki ngā iwi, ki ngā hāpori hoki i ngā ara kia pūmau ai te ahurea, kia whakahaumako ai hoki i tā te ākonga ako i te reo matatini me te whakawhiti kōrero.
- 3.2** Te whakamāraikerake i ngā āheinga o te reo matatini me te whakawhiti kōrero me mātua tutuki mō ngā ara me ngā mahi rerekē.
- 3.3** Te waihanga rauemi, kupu ārahi, taputapu hoki hei tautoko i ngā wāhi mātauranga kia pūrongo atu ki ngā whānau mō te ako haere o ā rātou ākonga hei wāhanga mō ngā pūrongo ako.
- 3.4** Te tautoko i ngā whakawhitinga pai o ngā ākonga me ngā whānau puta noa, i waenga hoki i ngā wāhi ako.
- 3.5** Te whakapūmau i te mahi tahi ki Te Puna Mātauranga o Aotearoa kia whānui ake ai te whai wāhitanga me te ako i te reo matatini me te whakawhiti kōrero.



Te Wāhanga Arotahi 1: Kia mārama kehokeho ngā kawatau mō te whakaako me te ako hei ārahi i ngā mahi e whaihua ana

1.1	Te tāmata i te ako i te reo matatini i te NZC, tae atu ki te whakapakaritanga o te whakawhiti kōrero me te mātau matihiko.	
1.1.1	Te tāmata i te ako i te reo matatini i whakaahuatia ai i te NZC hei tuku i tētahi poutarāwaho tōtōpū o te reo matatini me te whakawhiti kōrero, e kōtuitui ana i ngā hononga i waenga i te pānui, i te tuhituhi, i te kōrero, i te whakarongo, i te whakaatu, i te whakapuaki, i te mātau matihiko hoki.	» Ka whakahou <i>te Mātaiaho</i> i te wāhanga ako o te reo Pākehā, ka kōtuia hoki te reo matatini me te whakawhiti kōrero ki roto i ngā wāhanga ako katoa, ka whakamana hoki i Te Tiriti, ka kauawhi hoki. Ko ētahi o ngā panonitanga ko: › te whakawhānuitanga o te arotahi o nāiane ki te pānui me te tuhituhi e hīpoki ai te whānuitanga o ngā mōhiotanga me ngā pūkenga o te reo matatini me te whakawhiti kōrero, tae atu hoki ki te mātau matihiko
1.1.2	Te āta hoahoa i ngā wheako ako kia whanake ai i ngā mōhiotanga, i ngā pūkenga, i ngā āheinga hoki o te reo ā-waha me te mātau matihiko i roto i te NZC.	› te whakapakari i te hononga i waenga i te whenu reo o te Communication Mana reo kei <i>Te Whāriki</i> me <i>te Mātaiaho</i> e pūkei ai ki runga o ngā tau tōmua o te reo ā-waha me te reo matatini, me te hāngai ki ngā mahi ā-ahuhea, ā-pāpori hoki mō te reo matatini puta i te ara o te ako
1.1.3	Te whanake i te Common Practice Model hei tautoko i <i>te Mātaiaho</i> , hei whakapakari hoki i te tōtōpū me te ōrite o ngā mahi whakaako me te ako i te reo matatini me te whakawhiti kōrero puta i te pūnaha mātauranga.	› te rarangahia o te arotahi ki te ao Māori me te mana ōrite mō te mātauranga Māori. » Te aronga hou o te kōtuinga o te whakawhiti kōrero me te mātau matihiko ki roto i te Common Practice Model.
1.2	Te whakakapi i ngā Learning Progression Frameworks me ngā Literacy Learning Progressions ki tētahi ara ako mō te kura kia whakaatu ai i te raupapatanga o te ako mō te reo matatini me te whakawhiti kōrero, hei wāhanga mō te Common Practice Model.	
1.2.1	Te arotake me te hoahoa anō i ngā Learning Progression Frameworks me ngā Literacy Learning Progressions kia mārakerake ake ai te whakaaturia o te raupapa o te ako mō te reo matatini me te whakawhiti kōrero.	» Mā te ara ako e kaha ake nei ngā taipitopito o roto kia mārakerake ake ai, kia nui ake ai hoki ngā tauira hei āwhina i ngā kaiako kia mārama ki te ara ako, ki ngā pae o te ako, ki ngā huatau i ia pae me aro e rātou puta i ngā wāhanga ako katoa, hei wāhanga mō te Common Practice Model.
1.2.2	Te whakapakari tonu i te whakaako me te ako i te reo matatini hei wāhanga mō ngā panonitanga NCEA, tae atu ki te whakatinanatanga o tētahi tautokorua reo matatini hou.	» Whakaarohia te wāhi ki te School Entry Kete kia pai ake ai te kitea o ngā pūkenga o ngā ākongā kei tīmata ana rātou i te kura, kia kitea ai hoki te taumata i tō rātou tīmatanga i te roanga o te ara ako hou. » Mā ngā ara ako hou e tautoko ngā kaiako ki te whakatau i te rite o ngā ākongā kia aromatawaihia ki ngā tautokorua NCEA o te reo matatini.

1.3	Te waihanga rauemi, kupu ārahi hoki hei āwhina i ngā kaiako kia mārama, kia whai wāhi atu hoki ki te kokenga o ngā ākonga i te reo ā-waha me te reo matatini i ngā tau tōmua, hei wāhanga mō te Common Practice Model.	
1.3.1	Kia haere tonu te waihanganga o ngā taputapu me ngā rauemi mō ngā tau tōmua o te ako hei āwhina i ngā kaiako kia mārama, kia whai wāhi atu hoki ki te ara ako o ngā ākonga i ngā tau tōmua o te ako (tae atu ki te ako mō ngā kare ā-roto (SEL), i te reo ā-waha, i te reo matatini hoki), hei wāhanga mō te Common Practice Model.	<ul style="list-style-type: none"> » Ka tautokona tēnei e te mahi 4.1 o te <i>Early Learning Action Plan</i> (ELAP): ‘Gazette the curriculum framework, <i>Te Whāriki</i>, to support engagement with the principles, strands, goals and outcomes when designing local curricula.’ » Kei te hāngai hoki tēnei ki te ELAP 4.2: ‘Co-construct a range of valid, reliable, culturally and linguistically appropriate tools.’
1.3.2	Te tautoko i te whakatinanatanga o ngā taputapu me ngā rauemi mō ngā tau tōmua o te ako i roto i te Common Practice Model, i roto hoki i ngā ratonga a Te Poutāhū.	<ul style="list-style-type: none"> » Ka arotahi hoki ngā rauemi ki te ao Māori me te mana ōrite mō te mātauranga Māori. » E miramirahia ana e te rangahau te kaha o te hononga i waenga i te SEL me te ako i te reo.
1.4	Te waihanga kupu ārahi mō te whakaako i te reo matatini me te whakawhiti kōrero i ngā kura, hei wāhanga mō te Common Practice Model.	
1.4.1	Te whakakapi i ngā rauemi a te Effective Literacy Practice me te NZC Literacy & Communication Teaching, Assessment and Learning Guide.	<ul style="list-style-type: none"> » Ka whai wāhi ki tēnei te Early Literacy Approach hou kua tīmata kē te whakatinana haerehia (hei tauira, ngā pukapuka o te Ready to Read Phonics Plus, ngā tautoko ngaio o te Better Start Literacy Approach, me te Reading Recovery, te Early Literacy Support hoki kua whakapakaritia).
1.4.2	Waihangahia he Kupu Ārahi mā te Kaihautū mā ngā kaiārahi i ngā marau, mā ngā poari, mā ngā tīma whakahaere hoki hei whakaū i te Common Practice Model.	<ul style="list-style-type: none"> » Mā te pīngore o te tauira o te whakatinana e mōhiohia ai ka taea e ngā kaihautū te whakarerekē, te whakahāngai hoki ngā tukanga panoni ki ngā hiahia o te horopaki.
1.4.3	Te tuku kupu ārahi nā runga i ngā mahi me ngā rautaki e whai ana i ngā taunaki hei kōkiri i te ako, hei whakaiti hoki i te tautika-kore i te roanga o te ara o te kura.	<ul style="list-style-type: none"> » Ka aro ngā kupu ārahi ki ngā mahi nā runga i ngā taunaki hei whakatutuki i ngā hiahia kanorau o ngā ākonga, tae atu ki te aro ki ngā ākonga e rarapikipiki ana ngā hiahia.
1.4.4	Te tuku kupu ārahi mō te roa o te wā pai katoa mō te whakaako e tutuki ai ngā hiahia ako o te reo matatini me te whakawhiti kōrero i te roanga o te ara o te kura.	<ul style="list-style-type: none"> » Te tuku kupu ārahi mō te āta hoahoa mō te tangongitanga kia tautoko ai i ngā kaiako, kia aukati ai hoki i ngā mahi whakarōpū nā runga i ngā pūkenga, ngā mahi whakarōpū noa rānei e ūtonga ana. » Ka whai wāhi ki ngā kupu ārahi te arotahi ki te ao Māori me te mana ōrite mō te mātauranga Māori.

1.5	Te waihanga rauemi, kupu ārahi, taputapu hoki hei tautoko i te ako i te reo matatini me te whakawhiti kōrero mā ngā ākonga e kanorau ana ā-ahurea, ā-reo hoki.	
1.5.1	Te tuku kupu ārahi mō ngā āhuatanga ako ka āta aro ki te mātai reo mō ngā ākonga katoa, tē aro noa kē ai ki te hunga kātahi anō ka tīmata ki te ako i te reo Pākehā.	» Ka hīpoki i te āta whakaakona o te reo e hāngai ana ki te horopaki o te marau, tae atu ki ngā kupu me ngā takotoranga, nā runga i te mōhio he nui ngā ākonga ka whaihua ki te kaha ake ngā mahi whakatīrewa.
1.5.2	Te mōhio, te whakamana hoki i te kanorautanga o ngā ākonga kanorau ā-ahurea, ā-reo hoki (tae atu ki ērā e ako ana i te reo Pākehā hei reo āpiti) i te hoahoatanga o ngā rauemi me ngā whakangungu ngaio e tautoko ana i ngā kaiako.	» Ka kōtuia ngā mātāpono o te ako i tētahi reo anō ki ngā kupu ārahi me ngā rauemi. » Ko ngā kupu ārahi me ngā rauemi ka whakapūmau i ngā ahurea, ka aro ki ngā hua, ka whakapiki hoki i te mana o te tangata, ka tautoko hoki i ngā kaiako kia mōhio ai, kia aro ai hoki ki ngā horopaki ā-reo kanorau o te ākonga. Ka kōtuia ki roto i te Common Practice Model. » Ko ngā rauemi aromatawai, ko ngā kupu ārahi, ko ngā taputapu hoki (tae atu ki te School Entry Kete me ngā kupu ārahi mō te aromatawai kohura) ka aro ki tā te ākonga ako i te reo Pākehā hei reo tuarua. » Ka whakamahi i ngā hoahoa me ngā kaupapa o nāianei e whaihua kē ana (hei tauira, te Pasifika Early Literacy Project (PELP), te Pasifika Teacher Aide Project, te Pacific Bilingual & Immersion Education PLD, te hōtaka hoki o Tautai o le Moana).





Te Wāhanga Arotahi 2: Ngā tautoko i te āheinga i te roanga o te ara mahi kia whakapakari ai i ngā kaiako whaihua e tutuki ai ngā hiahia o ngā rōpū ākonga kanorau

2.1 Te waihanga, te whakapakari hoki i te arahina o te marautanga mō te reo matatini me te whakawhiti kōrero i ngā taumata pūnaha e toru: ā-motu, ā-rohe, ā-wāhi ako hoki.		
2.1.1	Te whakarite i te hautūtanga ā-motu mō te reo matatini me te whakawhiti i roto i a Te Poutāhū, ka tautokona e tētahi rōpū āwhina e tiaki ana puta i te pūnaha hei whakaū, hei panoni hoki i te Common Practice Model.	E rerekē ana ngā wero i ia wāhi hei whakaea i te whakataunga o te hautūtanga i te wāhi ako.
2.1.2	Te whakatairanga i te ōrite o ngā karere, te tukunga o ngā pārongo, te whakahaerenga o ngā kōtuinga mā roto i te hautūtanga ā-motu, ā-rohe hoki.	
2.1.3	Te whakapakari i te āheinga o te rāngai mahi mā te waihanganga me te whakahaerenga o ngā rauemi, o ngā taputapu, o ngā whakangungu hoki.	
2.1.4	Te whakaniko i ngā mahi whakamahere a te rāngai mahi hei whakapakari i ngā tūranga hautū mō te reo matatini me te whakawhiti kōrero i ngā wāhi ako.	
2.2 Te hoahoa, te waihanga hoki i ngā whakangungu ngaio mā te rāngai e arotahi ana, e pīngore ana, e hāngai ana hoki te tukua ki te Common Practice Model.		
2.2.1	Te whakaū i ngā mahi e arahina ana e ngā taunaki ki roto i ngā whakangungu ngaio (PLD), e hāngai ana ki te Common Practice Model.	<ul style="list-style-type: none"> » Kia waihanga ai i te PLD moroki, i te PLD e māmā ana te toronga, me aro ki ngā tauira hou e pīngore ana. » E hāngai ana te mahi 2.2.2 ki te ELAP 3.6: 'Develop a sustained and planned approach to professional learning and development.'
2.2.2	Kia ngātahi te hoahoa, te whakahaerenga hoki o te PLD ki te rāngai o ngā tau tōmua o te ako hei tautoko i te whakatinanatanga o ngā taputapu me ngā rauemi hou i roto i te Common Practice Model.	
2.2.3	Te tuku rauemi, kupu ārahi, tautoko hoki ki ngā kaiako motuhake mō ngā wāhanga marau mātārua hei whakapakari i te mōhiotanga, hei whakamahi hoki i ngā rautaki mō te waihanga i ngā pūkenga reo matatini e whāiti ana ki ngā mahi o roto.	
2.2.4	Te waihanga i tētahi puna hanumi o te PLD e piki tonu ana hei whakapakari i te āhei o ngā kaiāwhina ako, me ngā kaiāwhina whakaako i roto i te tautoko i te ako i te reo matatini me te whakawhiti kōrero.	
2.3 Te whakauru i te Common Practice Model ki ngā mahi whakaako, aromatawai, ako hoki e whāia ana e ngā kaituku ITE katoa.		
2.3.1	Te mahi tahi ki ngā kaituku i te ITE me Matatū Aotearoa kia mōhiotia ai kei te hāngai te mātauranga o ngā ihuputa ki ngā āhuatanga o nāianei o te Common Practice Model me ngā taputapu aromatawai.	» Ka whakapakari tēnei i ngā mahi kua tīmata kētia e Matatū Aotearoa.
2.3.2	Te mahi ki te taha o Matatū Aotearoa ki te hanga i tētahi tauira o te tautoko e whakapakari ai i ngā āheinga o ngā kaiako i ngā tau e rua i te tīmatanga o tā rātou whakaako i te reo matatini me te whakawhiti kōrero.	



Te Wāhanga Arotahi 3: Ngā tūhononga marohi i te ao mātauranga hei tautoko, hei whakapakari hoki i ngā mahi akoako

3.1	Te tautoko i ngā ratonga mō ngā tau tōmua o te ako me ngā kura e mahi tahi ai ki ngā whānau, ki ngā iwi, ki ngā hapori hoki i ngā ara e pūmau ai ngā ahurea, e whakahaumakotia ai hoki tā te ākongā ako i te reo matatini me te whakawhiti kōrero.	
3.1.1	Te mahi tahi ki te whānau hei waihanga, hei whakawātea hoki i te ara ki ngā rauemi me ngā kupu ārahi ka āwhina i a rātou kia tū hei haumi takatū i te ako haere a ā rātou ākongā i te reo matatini me te whakawhiti kōrero.	<ul style="list-style-type: none"> » Me whakapakari ngā mahi i ngā tauira me ngā kaupapa kua angitu kē i roto i te pūnaha (hei tauira, te Reading Together, te Talanoa Ako, me ngā rauemi o PELP) me ngā akoranga kua puta i te KOWHEORI-19. » Me āta aro hoki ki ngā ākongā o te reo Pākehā me ō rātou whānau.
3.1.2	Te tūhura i ngā arawātea ōkawa, ōpaki hoki o te whakangungu i roto i te reo matatini me te whakawhiti kōrero mā ngā whānau.	
3.1.3	Te tautoko i ngā kaupapa e arahina ana e te hapori, e te iwi hoki e āwhina ana i te whānau kia māia ai tā rātou toro atu ki ngā mahi ako a ā rātou ākongā i te reo matatini me te whakawhiti kōrero.	
3.2	Te whakamāraakerake i ngā āheinga o te reo matatini me te whakawhiti kōrero me mātua tutuki mō ngā ara me ngā mahi rerekē.	
3.2.1	Te mahi tahi ki ngā kaiwhakawhiwhi mahi me ētahi atu ki te tāutu, ki te kōrero hoki i ngā hiahia mō te hunga e wehe ana i te kura me ngā ara mahi i roto i te reo matatini me te whakawhiti kōrero.	<ul style="list-style-type: none"> » Ka tautokona ngā kaiako i roto i te tukunga o ēnei pārongo ki ā rātou ākongā me ō rātou whānau i ngā tau tōmua o te kura tuarua. » Ka tautokona tēnei e ngā mātauranga mō ngā ara mahi me te School Leavers' Toolkit.
3.2.2	Te waihanga i tētahi poutarāwaho hei ārahi, hei tautoko hoki i ngā ara ako – hei whakamahi mā ngā ākongā, mā ō rātou whānau, mā ngā kaiako, mā ngā poari hoki o ngā kura.	
3.3	Te waihanga rauemi, kupu ārahi, taputapu hoki hei tautoko i ngā wāhi mātauranga kia pūrongo atu ki ngā whānau mō te ako haere a ā rātou ākongā hei wāhanga mō ngā pūrongo ako.	
3.3.1	Te mahi tahi me ngā wāhi mātauranga, ngā whānau hoki, hei whakawhanake i ngā pūrongo ōrite o te ako haere me te angitu.	<ul style="list-style-type: none"> » Ka taea te kōkiri ēnei mahi hei whakaurunga ki roto i ngā pūrongo ako ka haere i te taha o te ākongā, e waihanga haerehia ana ināianei.

3.4	Te tautoko i ngā whakawhitinga pai o ngā ākonga me ngā whānau puta noa, i waenga hoki i ngā wāhi ako	
3.4.1	Te whakatairanga i te mahi tahi me te whakawhiti kōrero i waenga i ngā rāngai hei tautoko i te whakawhitinga o ngā ākonga me ō rātou whānau.	<ul style="list-style-type: none"> » He maha ngā whakawhitinga o ngā ākonga me ō rātou whānau puta i te ara ako katoa. Ko ētahi o ēnei ka kitea i waenga i ngā wāhi ako (hei tauira, te whakawhiti i ngā tau tōmua o te ako ki te kura, te whakawhiti rānei ki te kura tuarua), ā, tērā ētahi ka kitea i roto tonu i te wāhi ako (hei tauira, te neke e aro ai ki tētahi peka whāiti i ngā tau whakamutunga o te kura tuarua). » E tāpua ana te mahi tahi me ngā tāngata whānui hei tautoko i ngā ākonga, tae atu ki te whānau, ki te iwi, ki ētahi atu mema hoki o te hāpori e noho ana hei wāhanga mō te kōtuinga tautoko o te ākonga.
3.4.2	Te haere tonu ki te whakawhanake i te School Entry Kete hei tautoko i ngā whakawhitinga pai i waenga i ngā tau tōmua o te ako me te kura.	
3.4.3	Te hanga, te whakatinana hoki i ngā kohinga rauemi mō te whakawhitinga hei tautoko i ngā whānau, i ngā ākonga, i ngā kaiako hoki.	
3.5	Te whakaū i te mahi tahi ki Te Puna Mātauranga o Aotearoa kia whakawhānui ai i te toronga me te akoranga o te reo matatini me te whakawhiti kōrero.	
3.5.1	Te mahi tahi ki Te Puna Mātauranga o Aotearoa kia whakapakari i ā rātou tauira kia whakakaha ai i te ako i reo matatini me te whakawhiti kōrero i roto i te hāpori me ngā wāhi ako, kia whakatairangahia ai hoki te whai wāhi ki te pānui mā roto i ngā ngohe me ngā kaupapa e hāngai ana ki te reo matatini me te whakawhiti kōrero.	<ul style="list-style-type: none"> » Te whakapakari i ngā kaupapa me ngā mahi kua puta kē (hei tauira, ko te Pūtoi Rito Community of Readers). » Mā tēnei e wātea ai ngā arawātea ki te whakawhānui i te ako i waho i ngā wāhi ako, e toro atu ai hoki ki ngā whānau mā roto i ngā āhuatanga auaha, otirā, i ngā hararei roa o te raumati. » Mā te mahi tahi e whakamahi ai i ngā rauemi me ngā rautaki kua whakaputaina e Te Puna Mātauranga o Aotearoa, me te tūhura i te waihanganga o ēnei mea hou.





Te Wāhanga Arotahi 4: He pūnaha tautoko i te ako e urupare ana ki ngā hiahia o ngā ākonga katoa

4.1 Te hanga i tētahi puna kupenga whakahaumarū mō ngā ākonga i te roanga o te ara o te kura.	
4.1.1	Te waihanga i tētahi pūnaha o ngā kupenga whakahaumarū e whaihua ana, e tautika ana hoki, kia tohua ai ngā ākonga kia tautokona ki ngā tautoko ako āpiti.
4.1.2	Te tāutu i ngā wāhanga matua o te ako e tohu ana i te tika o tō te ākonga tukua kia whai tautoko āpiti.
4.1.3	Te whakamaheni i te whai wāhitanga atu ki ngā tautoko, me te hāpai i ngā ākonga he hiahia anō ō rātou i ngā pakeketanga katoa.
<ul style="list-style-type: none"> » Ka noho tūāpapa te ara ako e hāngai ana ki ngā taunaki ki ngā kupenga whakahaumarū i te kura. » Ka whai wāhi te aro ki te tūranga o te School Entry Kete me ngā hiahia o ngā ākonga e tata ana ki te tautokorua o te NCEA. » Ka arohia te tūranga o te Learning Support Coordinator i te kohinga me te tūhuratanga o ngā kōwhiringa mō ngā tautoko āpiti ka whānui pea, ka whāiti pea, ka hāngai rānei pea ki te kotahi. 	
4.2 Te arotake, te waihanga, te whakahāngai hoki i ētahi atu tautoko āpiti mō te reo matatini me te whakawhiti kōrero puta i te ara ako katoa, kia mōhiotia ai kei te hāngai ki te Common Practice Model.	
4.2.1	Te whakahāngai i ngā tukunga pūtea ki ngā tautoko āpiti o te reo matatini ki ngā taunaki o ngā mahi e whaihua ana.
4.2.2	Te arotake, te whakapakari hoki i te tūranga me ngā āheinga o ngā Resource Teachers of Literacy.
4.2.3	Te whakauru i ngā tautoko āpiti ki ngā ākonga o te kura tuarua e mōrearea ana tā rātou whakatutuki i te tautokorua o te NCEA.
4.2.4	Te whakarite i ngā arawātea mō ngā tautoko me ngā rautaki a te hāpori e hāngai ana ki ngā taunaki i te ako i te reo matatini me te whakawhiti kōrero.
<ul style="list-style-type: none"> » Ka aro tēnei ki ngā hiahia i te roanga o te ara ako, me te whakahāhira o te tōmua o te tāutu me te urupare ki ngā hiahia (e hāngai ana ki ngā take mātāmua 2 me te 3 o te <i>Learning Support Action Plan</i>). Ka whai wāhi ki te arotakenga o ngā momo tautoko kua puta kē: <ul style="list-style-type: none"> › te tūhura i te whaihua o te Oral Language Literacy Initiative me te tōmua o te whakawāteatanga ōna i te ara ako › te whakahāngai i te Reading Recovery me te Early Literacy Support ki ngā tautapanga ka puta i ngā tukanga o te arotake ka haere tonu › te arotake i te Accelerating Learning in Literacy › te whakapakari i te aroturuki, te whakatipu hoki i te āheinga ki te tuku tautoko i te whānuitanga o te reo matatini, tae atu ki te reo ā-waha. » Ka aro te tautoko ki ngā hiahia kanorau o ngā ākonga, tae atu ki te aro ki ngā hiahia rarapikipiki. » He kaupapa te Literacy and Numeracy Support in Schools kei te whakahaerehia kēhia (2021/22) hei tautoko i ngā rangapū tuatahi o ngā ākonga e whakatutuki ana i ngā tautokoroua o te NCEA. 	

4.3	Te waihanga i ngā tautoko e hāngai ana ki ngā taunaki e kitea ai te kanorautanga ā-roro o ngā ākonga (hei tauira, ko te tīpaopao kupu, ko te tīpaopao tuhinga, ko te mate whanake neketahi, ko te pūmanawatanga).	
4.3.1	Te whakapakari i ngā pūkenga o te rāngai mahi kia mārama ki te kanorautanga ā-roro me te whakatutuki i ngā hiahia o ngā ākonga katoa, tae atu ki te hunga tīpaopao kupu.	» Ka whakaata ngā mahi i te māramatanga ki ngā mahi whaihua hei tā te Māori titiro ki te kanorau ā-roro neurodiversity.
4.3.2	Te tūhura, te tuku kupu ārahi hoki ki ngā whānau, ki ngā kura, ki ngā wāhi ako hoki i ngā tau tōmua o te ako mō te tukunga o ngā hangarau matihiko (e whāiti ana) me ngā hangarau āwhina (e hāngai ana ki te kotahi) hei tautoko i te ako i te reo matatini me te whakawhiti kōrero.	<p>» Ko te tāutu o ngā hiahia me ngā tautoko ka hāngai ki ngā pūkenga, ka arotahi hoki ki ngā mahi hei urupare (kaua ko te tautohunga).</p> <p>» Me whakatau i te tautika-kore o ngā tukanga mō te tāutu i ngā hiahia tauwhāiti o ngā ākonga kanorau ā-roro.</p> <p>» Ka aro ki ngā ara hei whakapakari i te whai wāhitanga ki ngā hangarau āwhina, ki ngā hangarau matihiko hoki hei wāhanga mō tētahi rautaki kauawhi o te whakahaerenga o te marau.</p> <p>» Hei āpiti ki tēnei, e whakamātauria ana e mātou ngā kohinga rauemi i tēnei wā o te reo matatini me te whakawhiti kōrero mā ngā ākonga i ngā Tau 2-8 me whai tautoko āpiti ki te ako ki te pānui. Ka hāngai ngā kohinga ki ngā whakataunga māuiui, ka āta whakaritea, ka noho ki ngā pūnaha, ka piki haere hoki. Ka whakakaha i te aroā oromotu, i ngā mātāpono o te arapū, i te reretau, i te puna kupu, i ngā pūkenga aroā hoki.</p> <p>» Ka whai wāhi hoki ngā mahi arotake, whakahou hoki i ngā rauemi ehara nā Te Tāhuhu i te Literacy Online Dyslexia Resource Kete i ngā wā e tika ana.</p>

5

Te Wāhanga Arotahi 5: He arotakenga puta i te pūnaha e tautoko ana i tētahi pūnaha kei te ako haere

5.1 Te arotake, te waihanga hoki i tētahi puna tōtōpū o ngā taputapu aromatawai mā ngā kura.	
5.1.1	<p>Te whakamaheni, te waihanga hoki i tētahi puna e whaihua ana o ngā taputapu me ngā rautaki aromatawai kua tautapahia i roto i ngā kura e hāngai ana ki te Common Practice Model.</p> <ul style="list-style-type: none"> » E whai wāhi atu ana ki tēnei te waihanganga o tētahi School Entry Kete hei tautoko i ngā whakawhitinga pai ki te kura me te whakahou i te e-asTTle ki tētahi taputapu aromatawai ā-motu e whaitake ana, e hāngai ana ki te <i>Mātaiaho</i>, ki ngā ara ako hou hoki. » Ka aro ki te whakaurunga pea o te atamai hangahanga me ngā ‘māramatanga atamai’ hei āwhina ki te whakakapi i te āputa o te tautika, ki te whakakaha i te whaihua, ki te whakaheke hoki i te nui o te mahi ki ngā kaiako. » Ka whakauru hoki te kōtuinga o ngā pūrongo ako e tika ana, kei whakapūmau ana hoki i te pono o ngā aromatawai kounga nui.
5.2 Te hanga i tētahi rautaki arotake hei aroturuki i te whaihua o te whakatinanatanga o ngā mahi me te whakahāngai i ngā rawekehanga kia whaihua tonu ai ā haere ake nei.	
5.2.1	<p>Te waihanga i tētahi rautaki rangahau hei whakakapi i ngā āputa o tō mātou pātengi taunaki i te roanga o te ara ako.</p> <ul style="list-style-type: none"> » Me toitū, me reretahi hoki te arotahi ki ngā rangahau e koke whakamua ana i tā tātou pūnaha, e whai wāhi ana hoki te mātau matihiko, e urupare ana hoki ki ngā rautaki ā-ahurea e tiaki ana i ngā ākonga kanorau.
5.2.2	<p>Te mahi tahi ki ētahi atu hei aroturuki, hei arotake hoki i ngā pānga o te Mahere Whakatinana mō Te Reo Matatini me te Whakawhiti Kōrero (otirā ki ngā ākonga Māori, ki ngā ākonga Pasifika, ki ngā ākonga hoki me ngā hiahia ako āpiti).</p> <ul style="list-style-type: none"> » Me noho tahi ngā rangahau nō tāwāhi me ngā raraunga me ngā pārongo kei te wawe ake te puta, kei te tōtōpū ake, kei te pono ake hoki e hāngai ana ki te horopaki o Aotearoa.
5.2.3	<p>Te tukutuku, te whakawhiti hoki i ngā pārongo me ngā mōhiotanga mō te whakaako, te ako, te aromatawai hoki i te reo matatini me te whakawhiti kōrero mā te Online Curriculum Hub me ētahi atu kōtuinga hou, kōtuinga hoki kua puta kē.</p> <ul style="list-style-type: none"> » Mā te mahi tahi a Te Tāhuhu ki Te Tari Arotake Mātauranga me Wānangatia te Putanga Tauira kua tāmatahia e whai wāhi atu ai ki ngā raraunga kounga mō te whaihua o te pūnaha. » Mā roto i te wā, ka panoni haere te hoahoa o ngā rauemi, o ngā kupu ārahi, o ngā taputapu hoki hei urupare ki ngā rangahau me ngā taunaki e whaitake tonu ai.



He titiro whānui ki ngā mahi ā-rautaki mō te Pāngarau⁵

TE WĀHANGA AROTAHI 1

- 1.1** Te tāmata i te ako i te pāngarau i whakaahuatia ai i te NZC.
- 1.2** Te whakakapi i te Learning Progression Framework ki tētahi ara ako mō te kura kia whakaatu ai i te raupapatanga o te ako mō te pāngarau, hei wāhanga mō te Common Practice Model.
- 1.3** Te waihanga rauemi, kupu ārahi hoki hei āwhina i ngā kaiako kia mārama, kia whai wāhi atu hoki ki te kokenga o ngā ākonga i te pāngarau i ngā tau tōmua, hei wāhanga mō te Common Practice Model.
- 1.4** Te waihanga kupu ārahi mō te whakaako i te pāngarau, hei wāhanga mō te Common Practice Model.
- 1.5** Kia whakamaru i te wā mō te whakaako me te ako i te pāngarau.

TE WĀHANGA AROTAHI 5

- 5.1** Te arotake, te waihanga hoki i tētahi puna tōtōpū o ngā taputapu aromatawai mā ngā kura.
- 5.2** Te hanga i tētahi rautaki arotake hei aroturuki i te whaihua o te whakatinanatanga o ngā mahi whakatinana me te whakahāngai i ngā rawekehanga kia whaihua tonu ai ā haere ake nei.
- 5.3** Te waihanga i tētahi pātengi taunaki e whakapakari haerehia ana mō te whakaako, mō te ako, mō te aromatawai hoki i te pāngarau i te roanga o te ara.

TE WĀHANGA AROTAHI 4

- 4.1** Te hanga i tētahi puna kupenga whakahaumarū mō ngā ākonga i te roanga o te ara o te kura.
- 4.2** Te hoahoa, te waihanga hoki i ngā tautoko pāngarau i te roanga o te ara ako, kia mōhiotia ai kei te hāngai ki te Common Practice Model.

1.

Kia mārama kehokeho ngā kawatau mō te whakaako me te ako hei ārahi i ngā mahi e whaihua ana.

5.

He arotakenga puta i te pūnaha e tautoko ana i tētahi pūnaha kei te ako haere.

Kia eke ngā ākonga katoa ki te taumata o tō rātau pitomata, nā runga i te noho tau i tō rātau tuakiri, i tō rātau reo, i tō rātau ahurea hoki.

4.

He pūnaha tautoko i te ako e urupare ana ki ngā hiahia o ngā ākonga katoa.

⁵ Kia mōhio noa, kei te āhua o ngā pūtea me ngā whakataunga kaupapa here ā haere ake nei te wā o tētahi o ngā mahi.

TE WĀHANGA AROTAHI 2

2.1 Te waihanga, te whakapakari hoki i te arahina o te marautanga mō te pāngarau i ngā taumata pūnaha e toru: ā-motu, ā-rohe, ā-wahi ako hoki.

2.2 Te hoahoa, te waihanga hoki i ngā whakangungu ngaio mā te rāngai e arotahi ana, e pīngore ana, e hāngai ana hoki te tukua ki te Common Practice Model.

2.3 Te whakauru i te Common Practice Model ki ngā mahi whakaako, aromatawai, ako hoki e whāia ana e ngā kaituku ITE katoa.

2.4 Te whakarite i tētahi rāngai mahi pāngarau e whāiti ana, e tautōhito ana i te tukunga o te tautoko e arotahi ana, e hāngai ana hoki ki te kotahi, ki ngā ākonga e hiahia ana, tae atu ki ngā ākonga kanorau ā-roro (hei tauira, ko te tīpaopao kupu, ko te tīpaopao tuhinga, ko te mate whanake neketahi, ko te pūmanawatanga).

2.5 Te whakapakepake, te whakatipu hoki i te rāngai mahi ā haere ake nei o ngā kaiako pāngarau mā roto i ngā whakapoapoa, i te whakangungu, i te whakapainga ake hoki o te ara mahi.

2.

Ngā tautoko i te āheinga i te roanga o te ara mahi kia whaihua ai te whakapakari i ngā kaiako kia tutuki ai ngā hiahia o ngā rōpū ākonga kanorau.

3.

Ngā tūhononga pakari i te ao mātauranga hei tautoko, hei whakapakari hoki i ngā mahi akoako.

TE WĀHANGA AROTAHI 3

3.1 Te tautoko i ngā ratonga mō ngā tau tōmua o te ako me ngā kura kia mahi tahi ai ki ngā whānau, ki ngā iwi, ki ngā hāpori hoki i ngā ara kia pūmau ai ngā ahurea, kia whakahaumakotia ai hoki tā te ākonga ako i te pāngarau.

3.2 Te whakamāraakerake i ngā āheinga me whai i ngā ara me ngā mahi maha e kapi ana i te pāngarau.

3.3 Te waihanga rauemi, kupu ārahi, taputapu hoki hei tautoko i ngā wāhi mātauranga kia pūrongo atu ki ngā whānau mō te ako haere a ā rātou ākonga hei wāhanga mō ngā pūrongo ako.

3.4 Te tautoko kia pai ai ngā whakawhitinga a ngā ākonga me ngā whānau puta noa, i waenga hoki i ngā wāhi ako.

3.5 Te whakapiki i te mōhio o te katoa ki te tāpua o te whakahirahira ki te tau me ngā arawātea ka puta i ngā ara e kapi ana i te pāngarau.



Te Wāhanga Arotahi 1: Kia mārama kehokeho ngā kawatau mō te whakaako me te ako hei ārahi i ngā mahi e whaihua ana

1.1 Te tāmata i te ako i te pāngarau i whakaahuatia ai i te NZC.	
1.1.1	Te tāmata i te ako i te pāngarau i whakaahuatia ai i te NZC hei tuku i tētahi poutarāwaho tōtōpū o te pāngarau mō te tau puta i ngā wāhanga ako katoa, me te wāhanga ako o te pāngarau me te tauanga.
1.1.2	Kia whakakitea, kia miramirahia hoki te mōhiotanga tau tāpua me whai mō te ora, mō te kahawhiri, mō te kirirautanga ināianeī, ā haere ake nei hoki.
1.1.3	Te whanake i te Common Practice Model hei tautoko i te <i>Mātaiaho</i> , hei whakapakari hoki i te tōtōpū me te ōrite o ngā mahi whakaako me te ako i te tau, i te pāngarau, i te tauanga hoki puta i te pūnaha mātauranga.
<p>» Ka whakahou te tāmata o te NZC i te wāhanga ako o te pāngarau me te tauanga, ka kōtūia hoki te tau ki roto i ngā wāhanga ako katoa, ka whakamana hoki i Te Tiriti, ka kauawhi hoki. Ko ētahi o ngā panonitanga ko:</p> <ul style="list-style-type: none"> › te hari i ētahi mahi pāngarau ki ngā Tau 0-3 e noho ana ki ngā tau o muri ake, kia kitea ai e ngā ākonga i taua taumata o te ara kia eke ai ki tō rātou pitomata o te ako › te rarangahia o ngā mahi ki roto i te marautanga mō te take e whakamahi nei tātou i ngā taputapu pāngarau, me te āhua o te waihanganga mai i roto i ngā tau, me te hononga i waenga i te pāngarau me te ahurea, me te arotahi ki te ao Māori me te mana ōrite mō te mātauranga Māori › te mōhio kei te raupapa mai ngā akoranga e wātea ana i te rītahatanga ā-ahurea › te whakatū rōpū tautōhito kia tūhura ai i ngā mahi i te marau i raro i te whenu o te pāngarau i ngā taumata 7 me 8 o te NZC, me te aro ki te rawaka, te kore rānei i rawaka o te whānuitanga o ngā kaupapa ka tūponotia e te ākonga. 	
1.2 Te whakakapi i te Learning Progression Framework ki tētahi ara ako mō te kura kia whakaatu ai i te raupapatanga o te ako mō te pāngarau, hei wāhanga mō te Common Practice Model.	
1.2.1	Te arotake me te hoahoa anō i te Learning Progression Framework kia māraakerake ake ai te whakaaturia o te raupapa o te ako mō te tau.
1.2.2	Te whakapakari tonu i te whakaako me te ako i te pāngarau hei wāhanga mō ngā panonitanga NCEA, tae atu ki te whakatinanatanga o tētahi tautokorua tau hou.
<p>» Mā te ara ako e kaha ake nei ngā taipitopito o roto kia māraakerake ake ai, kia nui ake ai hoki ngā tauira hei āwhina i ngā kaiako kia mārama ki te ara ako, ki ngā pae o te ako, ki ngā huatau i ia pae me aro e rātou puta i ngā wāhanga ako katoa, hei wāhanga mō te Common Practice Model.</p> <p>» Arohia te wāhi ki te School Entry Kete kia pai ake ai te kitea o ngā pūkenga o ngā ākonga kei tīmata ana rātou i te kura, kia kitea ai hoki te taumata i tō rātou tīmatanga i te ara ako hou.</p> <p>» Mā ngā ara ako hou e tautoko ngā kaiako ki te whakatau i te rite o ngā ākonga kia aromatawaihia ki ngā tautokorua NCEA o te tau.</p>	

1.3	Te waihanga rauemi, kupu ārahi hoki hei āwhina i ngā kaiako kia mārama, kia whai wāhi atu hoki ki te kokenga o ngā ākonga i te pāngarau i ngā tau tōmua, hei wāhanga mō te Common Practice Model.	
1.3.1	Kia whakawhānuitia te pātengi taunaki mō te āhua o te ara ako i te tau i ngā tau tōmua o te ako, tae atu ki te pānga o te whanaketanga o te reo ā-waha ki te ako, me ngā rautaki whaihua katoa hei tautoko i te ako i te tūāpapa o te pāngarau i ngā wāhi ako o ngā tau tōmua hei ārahi i te Common Practice Model i ngā tau tōmua o te ako.	» Ka tautokona tēnei e te mahi 4.1 o te <i>Early Learning Action Plan</i> (ELAP): ‘Gazette the curriculum framework, <i>Te Whāriki</i> , to support engagement with the principles, strands, goals and outcomes when designing local curricula.’
1.3.2	Kia waihanga i ngā taputapu me ngā rauemi hei āwhina i ngā kaiako kia mārama, kia whai wāhi atu hoki ki te ara ako o ngā ākonga i ngā tau tōmua o te ako (tae atu ki te ako mō ngā kare ā-roto (SEL), ki te reo ā-waha, ki te pāngarau hoki), hei wāhanga mō te Common Practice Model.	» Kei te hāngai hoki tēnei ki te ELAP 4.2: ‘Co-construct a range of valid, reliable, culturally and linguistically appropriate tools.’
1.3.3	Te tautoko i te whakatinanatanga o ngā taputapu me ngā rauemi mō ngā tau tōmua o te ako i roto i te Common Practice Model, i roto hoki i ngā ratonga a Te Poutāhū.	» Ka arotahi hoki ngā rauemi ki te ao Māori me te mana ōrite mō te mātauranga Māori.
1.4	Te waihanga kupu ārahi mō te whakaako i te pāngarau, hei wāhanga mō te Common Practice Model.	
1.4.1	Te waihanga i tētahi NZC Maths Teaching, Assessment and Learning Guide kia kōtuia ai ngā rautaki whānui e hāngai ana ki ngā taunaki ki te whakaakona me te ākonga o te pāngarau.	» E miramirahia ana e te rangahau te kaha o te hononga i waenga i te SEL me te ako i te reo me te pāngarau.
1.4.2	Te waihanga, te whakamātau hoki i tētahi hōtaka whakaako me te ako, atu i tētahi pito ki tētahi pito, mā ngā kura e hāngai ana ki te Common Practice Model, e tuku ana hoki i te raupapatanga o ia pae mō ngā wheako ako mō ngā ākonga i ngā Tau 0-10.	» Ka whakaea ngā kupu ārahi me ngā rauemi i ngā whakaaro e hanumi ana, e tukituki ana i ōna wā mō te ara pai katoa ki te whakaako i te pāngarau kia mārakerake ai, kia tōtōpū ai hoki te whakamārama ki ngā kaiako.
1.4.3	Te whakahou, te hoahoa anō hoki i ngā rauemi marautanga e whakaata ai i te Common Practice Model me te pātengi taunaki e tipu haere ana mō ngā mahi kauawhi, mahi e toitū ana hoki i ngā ahurea.	» Ka whai wāhi ki ngā kupu ārahi te hirahira o tā te ākonga whai wāhi ki ngā wheako ako whānui, tae atu ki: te āta whakarite, te āta raupapatanga o ngā tohutohu, ngā rautaki haratau, te arawātea ki te tūhura, me te whakawhiti kōrero me te parahau i ngā whakaaro hei wāhanga mō te hapori o te pakirehua.
1.4.4	Waihangahia he Kupu Ārahi mā te Kaihautū mā ngā kaiārahi i ngā marau, mā ngā poari, mā ngā tīma whakahaere hei whakaū i te Common Practice Model.	» Te tuku kupu ārahi mō te āta hoahoa mō te tangongitanga e tautoko ai i ngā kaiako, e aukati ai hoki i ngā mahi whakarōpū nā runga i ngā pūkenga, ngā mahi whakarōpū noa rānei e ūtonga ana.
		» Mā te pīngore o ngā taura o te whakatinana e mōhioia ai ka taea e ngā kaihautū te whakarerekē, te whakahāngai hoki ngā tukanga panoni ki ngā hiahia o te horopaki.
		» Ka whai wāhi ki ngā kupu ārahi te arotahi ki te ao Māori me te mana ōrite mō te mātauranga Māori.

1.4.5	Te waihanga i tētahi pātengi taunaki mō te whaihua o te whakamahi i ngā taputapu rāwekeweke, taputapu kikokiko hoki hei whakaniko i te whakaako me te ako, me te whai pūtea e taea ai te tuku ēnei taputapu ako whakahirahira ki ngā wāhi ako.	<ul style="list-style-type: none"> » Ka aro ngā kupu ārahi ki ngā mahi whaihua nā runga i ngā taunaki hei whakatutuki i ngā hiahia kanorau o ngā ākonga, tae atu ki te aro ki ngā ākonga e rarapikipiki ana ngā hiahia. » Ka aro ngā kupu ārahi ki ngā hiahia ako rerekē o ngā ākonga puta i te whakaako me te ako i roto i te wāhanga ako o te pāngarau me te tauanga.
1.5	Kia whakamaru i te wā mō te whakaako me te ako i te pāngarau.	
1.5.1	Ka whai wāhi ki te Maths Teaching, Assessment and Learning Guide te wā e tautapahia ana, e mōkito ana hoki me pau ki te whakaako me te ako i te pāngarau i ia wiki i te kura.	<ul style="list-style-type: none"> » Kei te whakaaturia ki ngā taunaki o nāiane te whānui o te rerekē o te wā e ako ana i te pāngarau me te whakakapinga o ngā whenu pāngarau katoa i te NZC.
1.5.2	Ka tuku kupu ārahi ngā Kupu Ārahi mā te Kaihautū mō ngā ara whānui kia whakamaru i te wā mō te whakaako me te ako i te pāngarau.	<ul style="list-style-type: none"> » Me aro ki ngā ara whānui kia whakamaru i te wā mō te whakaako me te ako i te pāngarau.





Te Wāhanga Arotahi 2: Ngā tautoko i te āheinga i te roanga o te ara mahi kia whakapakari ai i ngā kaiako whaihua kia tutuki ai ngā hiahia o ngā rōpū ākonga kanorau

2.1 Te waihanga, te whakapakari hoki i te arahina o te marautanga mō te pāngarau i ngā taumata pūnaha tāpua e toru: ā-motu, ā-rohe, ā-wāhi ako hoki.		
2.1.1	Te whakataunga o tētahi momo hautūtanga ā-motu (tae atu pū ki te tau) i Te Poutāhū, ka tautokona e tētahi rōpū āwhina e tiaki ana puta i te pūnaha hei whakaū, hei panoni hoki i te Common Practice Model.	<ul style="list-style-type: none"> » E rerekē ana ngā wero i ia wāhi hei whakaea i te whakataunga o te hautūtanga i te wāhi ako. » Ahakoa kei ētahi kura kē ētahi tūranga ārahi i te marau o te pāngarau, kāore e ōrite ana te tukunga o ngā tautoko kia waihangahia he marau ā-rohe, kia tahi-ki-te-tahi te tautoko i te āheinga, kia tūhonohia hoki ngā mahi akoako ki ngā whānau, ki ngā iwi, ki te hāpori hoki, kia tautoko hoki i te māramatanga o te katoa puta i te kōtuinga o ngā kaiārahi i te marau. » Mō ngā kura pakupaku, me tiri pea i aua tūranga me te kaha ake o te whakawhirinaki atu ki ngā kaiārahi marau pāngarau ā-rohe.
2.1.2	Te whakatairanga i te ōrite o ngā karere, te tukunga o ngā pārongo, te whakahaerenga o ngā kōtuinga mā roto i te hautūtanga ā-motu, ā-rohe hoki.	
2.1.3	Te whakakaha i te āheinga o te rāngai mahi mā roto i ngā rauemi, i ngā taputapu, i ngā whakangungu hoki mō te waihanganga me te whakatinanatanga.	
2.1.4	Te whakaniko i ngā mahi whakamahere a te rāngai mahi hei whakarewa i ngā tūranga hautū mō te pāngarau i ngā wāhi ako.	
2.1.5	Te whakarewanga ake o tētahi tūranga ārahi i ngā kura tuarua, i runga i te take o te tautoko i ngā kaiako ehara i te kaiako pāngarau ki te whakaako i te tau, hei tautoko hoki i te kōkiritanga o ngā mahi akoako.	
2.2 Te hoahoa, te waihanga hoki i ngā whakangungu ngaio mā te rāngai e arotahi ana, e pīngore ana, e hāngai ana hoki te tukua ki te Common Practice Model.		
2.2.1	Te hoahoa ngātahi i tētahi tauira ā-motu o te whakangungu ngaio (PLD) pāngarau puta i te kura kia whaihua ai te whakapakari i ngā kaiako, e arotahi ana ki ngā kura e nui katoa ana te matea.	<ul style="list-style-type: none"> » Kia waihanga ai i te PLD moroki, i te PLD e māmā ana te toronga, me whakaaro ki ngā tauira hou e pīngore ana. » Me whakawhānui i ngā PLD kia arotahi pū ai ki te whanaketanga o ngā mōhiotanga ki ngā āhuetanga ako o ngā kaiako me tō rātou mārama ki ngā mahi pāngarau, e wātea kau ana ki ngā kaiako ka hiahia ana. » E hāngai ana te mahi 2.2.2 ki te ELAP 3.6: 'Develop a sustained and planned approach to professional learning and development.'
2.2.2	Kia ngātahi te hoahoa, te whakahaerenga hoki o te PLD ki te rāngai o ngā tau tōmua o te ako hei tautoko i te whakatinanatanga o ngā taputapu me ngā rauemi hou i roto i te Common Practice Model, tae atu ki ngā kupu ārahi hou mō te āhua o te whakaatu me te tiri i ngā ariā o te pāngarau.	
2.2.3	Te whakaū i ngā mahi e arahina ana e ngā taunaki ki roto i ngā PLD katoa, e hāngai ana ki te Common Practice Model.	
2.2.4	Te waihanga i tētahi puna hanumi o te PLD e piki tonu ana hei whakapakari i te āhei o ngā kaiāwhina ako, me ngā kaiāwhina whakaako i roto i te tautoko i te ako i te pāngarau.	

2.3 Te whakauru i te Common Practice Model ki ngā mahi whakaako, aromatawai, ako hoki e whāia ana e ngā kaituku ITE katoa.		
2.3.1	Te mahi tahi ki ngā kaituku i te ITE me Matatū Aotearoa kia mōhiotia ai kei te hāngai te mātauranga o ngā ihuputa ki ngā āhuatanga o nāiane i te Common Practice Model me ngā taputapu aromatawai.	» Ka whakapakari tēnei i ngā mahi kua tīmata kētia e Matatū Aotearoa.
2.3.2	Te mahi ki te taha o Matatū Aotearoa ki te hanga i tētahi tauira o te tautoko kia whakapakari ai i ngā āheinga ā-pāngarau o ngā kaiako i ngā tau e rua o te tīmatanga o tā rātou whakaako.	
2.4 Te whakarite i tētahi rāngai mahi whāiti pāngarau e tautōhito ana i te tukunga o te tautoko e arotahi ana, e hāngai ana hoki ki te kotahi, ki ngā ākongā e hiahia ana tae atu ki ngā ākongā kanorau ā-roro (hei tauira, ko te tīpaopao kupu, ko te tīpaopao tuinga, ko te mate whanake neketahi, ko te pūmanawatanga).		
2.4.1	Arotakehia te tauira o te Programmes for Students Maths Specialist Teachers me ngā pūtea kura tuatoru hei tautoko i ngā kaiako ki te whakakī i ngā tūranga hou o te kaitautoko ki te ākongā pāngarau me te kaiārahi marau.	» Ka whakahaua, ka tautokona hoki ngā kaiako o nāiane i ki te whakawhanake i tō rātou mōhio ki ngā āhuatanga ako me te māramatanga ki te pāngarau.
2.4.2	Te whakahau i ngā kaiako kia whakangungua hei kaiako motuhake mō te pāngarau mā te whakatairangahia o te ara mahi kua pai ake, me ngā arawātea mātauranga kei te wātea.	
2.4.3	Te hoahoa i ngā arawātea mātauranga me ngā PLD hei tautoko i ngā kaiako kia whāiti te titiro ki ngā rautaki kōkiri i ngā ākongā kanorau, tae atu ki te hunga kanorau ā-roro.	
2.5 Te whakapakepake, te whakatipu hoki i te rāngai mahi ā haere ake nei o ngā kaiako pāngarau mā roto i ngā whakapoapoa, i te whakangungu, i te ara mahi hoki e kaha ake ana.		
2.5.1	Te hoahoa anō i ngā tautoko whakangungu o nāiane ki ngā pouako pīrere (PCT) me ngā kaiako i whakangungua i tāwāhi kia whai wāhi ai te arotahi ki te whakaako me te ako i te pāngarau e hāngai ana ki te Common Practice Model.	» Me whakaata te rāngai mahi ā haere ake nei i te pāpori kanorau o Aotearoa. » E tohu ana te kapohanga ake o ngā whakapoapootanga o nāiane i te whaihua o te urunga o ngā reo o ērā e whai nei tātou kia torongia mā roto i ngā whakapoapoa hou.
2.5.2	Te tuku kupu ārahi hei tautoko i ngā pouhāpai ki te whakawhanake i te māramatanga o ngā PCT ki te pāngarau me te mōhiotanga ki ngā āhuatanga ako e hāngai ana ki te Common Practice Model.	
2.5.3	Te arotake, me te hoahoa anō i tētahi rautaki reretahi hei whakapoapoa i ngā ihuputa pāngarau me ngā ringa ngaio pāngarau kia whakangungua hei kaiako.	



Te Wāhanga Arotahi 3: Ngā tūhononga marohi i te ao mātauranga hei tautoko, hei whakapakari hoki i ngā mahi akoako

3.1 Te tautoko i ngā ratonga mō ngā tau tōmua o te ako me ngā kura kia mahi tahi ai ki ngā whānau, ki ngā iwi, ki ngā hapori hoki i ngā ara kia pūmau ai ngā ahurea, e whakahaumakotia ai hoki tā te ākonganga ako i te pāngarau.	
3.1.1	Te mahi tahi ki ngā whānau hei waihanga, hei whakawātea hoki i te ara ki ngā rauemi me ngā kupu ārahi ka āwhina i a rātou kia tū hei haumi takatū i te ako haere a ā rātou ākonganga i te pāngarau.
3.1.2	Ka tautoko a Te Mahau (https://temahau.govt.nz) i ngā kōtuinga ā-rohe i waenga i ngā rāngai hei whanake, hei whakatipu hoki i ngā kaupapa e arahina ana e te hapori, e te iwi hoki e tautoko ana, e whakatipu ana hoki i ngā wheako ako i te pāngarau, otirā ki ngā ākonganga Māori me ngā ākonganga Pasifika.
3.1.3	Te tuku kupu ārahi ki ngā Resource Teachers Learning and Behaviour (RTLB) mō ngā ara kia whaihua ai te tautoko i ngā waiaro pai mō te pāngarau me ngā akomanga kauawhi mō te ako i te pāngarau.
3.2 Te whakamāraherake i ngā āheinga me whai i ngā ara me ngā mahi tūranga maha e kapi ana i te pāngarau.	
3.2.1	Te mahi tahi ki ngā kaiwhakawhiwhi mahi me ētahi atu ki te tāutu, ki te kōrero hoki i ngā hiahia mō te hunga e wehe ana i te kura me ngā ara mahi i roto i te pāngarau.
3.2.2	Te waihanga i tētahi poutarāwaho hei ārahi, hei tautoko hoki i ngā ara ako – hei whakamahi mā ngā ākonganga, mā ō rātou whānau, mā ngā kaiako, mā ngā poari hoki o ngā kura.
3.2.3	Kia mahi tahi ki ngā whānau, ki ngā iwi, ki ngā hapori hoki kia waihanga i ngā tautoko me ngā whakapoapoa e whakatairanga ana i ngā ara mātauranga me ngā ara mahi e kapi ana i te pāngarau ki ngā ākonganga Māori me ngā ākonganga Pasifika.

» Mā ngā mahi e pūmau ai te mōhio he tukanga kei reira ki te tiri i ngā rauemi me ngā kupu āwhina ki ngā whānau mā ngā wāhi mātauranga, mā ngā ratonga tautoko i ngā whānau, mā te ipurangi hoki.

» Me whakapakari ngā mahi i ngā tauira me ngā kaupapa whaihua kei roto kē i te pūnaha, tae atu ki ngā kitenga i ngā mea whaihua, i ngā mea hoki kua whakanuia i te reo matatini.

» Ko te mātauranga mō ngā ara mahi tētahi āwhina hei whakapiki i te mōhiotanga me te ngākaunui o te ākonganga i ngā ara e kapi ana i te pāngarau.

3.3	Te waihanga rauemi, kupu ārahi, taputapu hoki hei tautoko i ngā wāhi mātauranga kia pūrongo atu ki ngā whānau mō te ako haere a ā rātou ākongā hei wāhanga mō ngā pūrongo ako.	
3.3.1	Te mahi tahi me ngā wāhi mātauranga, ngā whānau hoki, hei whakawhanake i ngā pūrongo ōrite o te ako haere me te angitu.	» Ka taea te kōkiri ēnei mahi hei whakaurunga ki roto i ngā pūrongo ako ka haere i te taha o te ākongā, e waihanga haerehia ana ināianei
3.4	Te tautoko i ngā whakawhitinga pai o ngā ākongā me ngā whānau puta noa, i waenga hoki i ngā wāhi ako.	
3.4.1	Te whakatairanga i te mahi tahi me te whakawhiti kōrero i waenga i ngā rāngai hei tautoko i ngā whakawhitinga o ngā ākongā me ō rātou whānau.	» He maha ngā whakawhitinga o ngā ākongā me ō rātou whānau puta i te ara ako katoa. Ko ētahi o ēnei ka kitea i waenga i ngā wāhi ako (hei tauira, te neke i ngā tau tōmua o te ako ki te kura, te whakawhiti rānei ki te kura tuarua), ā, tērā ētahi ka kitea i roto tonu i te wāhi (hei tauira, te neke kia aro ai ki tētahi peka whāiti i ngā tau whakamutunga o te kura tuarua). » E tāpua ana te mahi tahi me ngā tāngata whānui hei tautoko i ngā ākongā, tae atu ki te whānau, ki te iwi, ki ētahi atu mema hoki o te hapori e noho ana hei wāhanga mō te kōtuinga tautoko o te ākongā.
3.4.2	Te haere tonu ki te whakawhanake i te School Entry Kete hei tautoko i ngā whakawhitinga pai i waenga i ngā tau tōmua o te ako me te kura.	
3.4.3	Te hanga, te whakatinana hoki i ngā kohinga rauemi mō te whakawhitinga hei tautoko i ngā whānau, i ngā ākongā, i ngā kaiako hoki.	
3.4.4	Kia ngātahi te hoahoa me te waihanga i ngā rauemi pāngarau mā ngā ākongā me ngā whānau e taupua ana te noho, e matatini ana hoki/rānei ngā taupā ki tā rātou ako i te pāngarau.	
3.5	Te whakapiki i te mōhio o te katoa ki te tāpua o te whakahirahira o te tau me ngā arawātea ka puta i ngā ara e kapi ana i te pāngarau.	
3.5.1	Te waihanga i tētahi kohinga whakatairanga ā-motu kia hiki ai te māramatanga me te uara o ngā āhuatanga tāpua o te tau, o te pāngarau, o te tauanga hoki ki ngā tāngata katoa o Aotearoa.	» Ka whai wāhi hoki te arotahi ki ngā ākongā Māori me ō rātou whānau, ki ngā ākongā Pasifika hoki me ō rātou whānau.



Te Wāhanga Arotahi 4: He pūnaha tautoko i te ako e urupare ana ki ngā hiahia o ngā ākonga katoa

4.1 Te hanga i tētahi puna kupenga whakahaumarū mō ngā ākonga i te roanga o te ara o te kura.	
4.1.1	Te waihanga i tētahi pūnaha o ngā kupenga whakahaumarū e whaihua ana, e tautika ana hoki, kia tohua ai ngā ākonga kia tautokona ki ngā tautoko ako āpiti.
4.1.2	Te tāutu i ngā wāhanga matua o te ako e tohu ana i te tika o tō te ākonga tukua kia whai tautoko āpiti.
4.1.3	Te whakamaheni i te whai wāhitanga atu ki ngā tautoko me te hāpai i ngā ākonga he hiahia anō nō rātou i ngā pakeketanga katoa.
	<ul style="list-style-type: none"> » Ka noho tūāpapa te ara ako e hāngai ana ki ngā taunaki ki ngā kupenga whakahaumarū i te kura. » Ka whai wāhi te aro ki te tūranga o te School Entry Kete me ngā hiahia o ngā ākonga e tata ana ki te tautokorua o te NCEA. » Ka arohia te tūranga o te Learning Support Coordinator i te kohinga me te tūhurātanga o ngā kōwhiringa mō ngā tautoko āpiti ka whānui pea, ka whāiti pea, ka hāngai rānei pea ki te kotahi.
4.2 Te hoahoa, te waihanga hoki i ngā tautoko āpiti pāngarau i te roanga o te ara ako, kia mōhiotia ai kei te hāngai ki te Common Practice Model.	
4.2.1	Te waihanga i tētahi puna o te rangahau me ngā taunaki o ngā rautaki kōkiri i te pāngarau e whaihua ana, te whakamahi hoki hei waihanga i tētahi taura o ngā tautoko āpiti mō te pāngarau ki ngā ākonga i te roanga o te ara ako.
4.2.2	Te whakataki i ētahi tūranga motuhake i ngā kura kia whakaakona ai ngā akoranga kōkiri kua whakahāngaitia, e aro ana hoki ki te kotahi, me te aro ki te tautoko i ngā ākonga kanorau ā-roro (tae atu ki te hunga tau tīpaopao) me ngā ākonga e mōrearea ana tā rātou whakatutuki i te tautokorua NCEA.
4.2.3	Te whakauru i ngā tautoko āpiti ki ngā ākonga o te kura tuarua e mōrearea ana tā rātou whakatutuki i te tautokorua o te NCEA.
4.2.4	Te whakarite i ngā arawātea mō ngā tautoko me ngā rautaki a te hāpori e hāngai ana ki ngā taunaki i te ako i te pāngarau.
	<ul style="list-style-type: none"> » Ka aro tēnei ki ngā hiahia i te roanga o te ara ako, me te whakahirahira o te tōmua o te tāutu me te urupare ki ngā hiahia (e hāngai ana ki ngā take mātāmua 2 me te 3 o te <i>Learning Support Action Plan</i>). Ka tōia mai ngā akoranga kua mau kē i ngā momo tautoko kua puta kē, tae atu ki te Accelerating Learning in Mathematics me ngā hōtaka o te Mathematics Support Teacher. » Torutoru noa iho ngā tautoko mō te tau me te pāngarau i tēnei wā, ā, me pau he wā ki te hoahoa, ki te whakatinana hoki i tētahi taura o te tautoko kia tutuki ai ngā kawenga i te roanga o te ara ako katoa. » Katoa mai ngā tautoko ka hāngai, ka urupare hoki ki ngā kanorautanga ā-roro i waenga i ngā ākonga. » Ka aro te tautoko ki ngā hiahia kanorau o ngā ākonga, tae atu ki te aro ki ngā hiahia rarapikipiki. » He kaupapa te Literacy and Numeracy Support in Schools kei te whakahaerehia kēhia (2021/22) hei tautoko i ngā rangapū tuatahi o ngā ākonga e whakatutuki ana i ngā tautokoroua o te NCEA. » E tohu ana ngā rangahau mō ngā pānga o te whakarōpū nā runga i ngā mōhiotanga me ngā āheinga pūmau i te tika o te whakahaerehia o ngā tautoko i te akomanga.

5

Te Wāhanga Arotahi 5: He arotakenga puta i te pūnaha e tautoko ana i tētahi pūnaha kei te ako haere

5.1 Te arotake, te waihanga hoki i tētahi puna tōtōpū o ngā taputapu aromatawai mā ngā kura.	
5.1.1	<p>Te whakamaheni, te waihanga hoki i tētahi puna e whaihua ana o ngā taputapu me ngā rautaki aromatawai kua tautapahia i roto i ngā kura e hāngai ana ki te Common Practice Model.</p> <ul style="list-style-type: none"> » E whai wāhi atu ana ki tēnei te waihanganga o tētahi School Entry Kete hei tautoko i ngā whakawhitinga pai ki te kura me te whakahou i te e-asTTle ki tētahi taputapu aromatawai ā-motu e whaitake ana, e hāngai ana ki te <i>Mātaiaho</i>, ki ngā ara ako hou hoki. » Ka aro ki te whakaurunga pea o te atamai hangahanga me ngā 'māramatanga atamai' hei āwhina ki te whakakapi i te āputa o te tautika, ki te whakakaha i te whaihua, ki te whakaheke hoki i te nui o te mahi ki ngā kaiako. » Ka whakauru hoki te kōtuinga o ngā pūrongo ako e tika ana, kei whakapūmau ana hoki i te pono o ngā aromatawai kouna nui.
5.2 Te hanga i tētahi rautaki arotake hei aroturuki i te whaihua o te whakatinanatanga o ngā mahi me te whakahāngai i ngā rawekehanga ki ngā taunaki kia whaihua tonu ai ā haere ake nei.	
5.2.1	<p>Te mahi tahi ki ētahi atu hei aroturuki, hei arotake hoki i ngā pānga o te Mahere Whakatinana mō Te Pāngarau, otirā ki ngā ākonga Māori, ngā ākonga Pasifika, ngā ākonga hoki me ngā hiahia ako āpiti.</p> <ul style="list-style-type: none"> » Me noho tahi ngā rangahau nō tāwāhi me ngā raraunga me ngā pārongo kei te wawe ake te puta, kei te tōtōpū ake, kei te pono ake hoki e hāngai ana ki te horopaki o Aotearoa.
5.2.2	<p>Te tukutuku, te whakawhiti hoki i ngā pārongo me ngā mōhiotanga mō te whakaako, te ako, te aromatawai hoki i te pāngarau mā te Online Curriculum Hub me ētahi atu kōtuinga hou, kōtuinga hoki kua puta kē.</p> <ul style="list-style-type: none"> » Mā te mahi tahi a Te Tāhuhu, Te Tari Arotake Mātauranga me Wānangatia te Putanga Tauira kua tāmatahia ka whai wāhi atu ai ki ngā raraunga kouna mō te whaihua o te pūnaha. » Mā roto i te wā, ka panoni haere te hoahoa o ngā rauemi, o ngā kupu ārahi, o ngā taputapu hoki hei urupare ki ngā rangahau me ngā taunaki kia whaitake tonu ai.
5.3 Te waihanga i tētahi pātengi taunaki e whakapakari haerehia ana mō te whakaako, mō te ako, mō te aromatawai hoki i te pāngarau i te roanga o te ara.	
5.3.1	<p>Te waihanga i tētahi rautaki rangahau hei whakakā i ngā āputa i tā mātou pātengi taunaki.</p> <ul style="list-style-type: none"> » Me toitū, me reretahi hoki te arotahi ki ngā rangahau e kōkiri whakamua ana i tā tātou pūnaha, kia whai wāhi atu ai te mātauranga Māori, ngā ara mōhiotanga o ngāi Pasifika, me te pāngarau ā-ahurea.
5.3.2	<p>Te whakarewa i tētahi pūtea auaha hei whakatipu i te hautūtanga ā-marau, hei waihanga i te mārama ngātahi ki ngā rautaki whaihua, hei ārahi hoki i ngā mōhiotanga o Te Poutāhū me tā rātou pātengi taunaki.</p>





Te Poutāhū
Curriculum Centre



**Te Tāhuhu o
te Mātauranga**
Ministry of Education

**Te Kāwanatanga
o Aotearoa**
New Zealand Government

education.govt.nz