

**SUPPLEMENTARY DEED OF AGREEMENT****HOLY FAMILY SCHOOL, WANAKA**

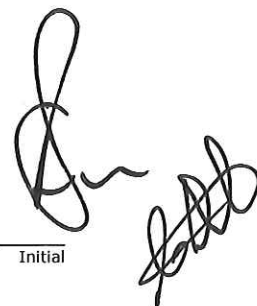
THIS DEED OF AGREEMENT is made on the 16<sup>th</sup> day of October two thousand and seventeen (2017) BETWEEN **THE ROMAN CATHOLIC BISHOP OF THE DIOCESE OF DUNEDIN**, a "Corporation Sole" (hereinafter with its successors referred to as "the Proprietor") of the first part and **HER MAJESTY THE QUEEN** acting by and through the Minister of Education (hereinafter referred to as "The Minister") of the second part.

**WHEREAS**

- A By Deed of Agreement bearing date the 18<sup>th</sup> day of December, two thousand and five (2005) as varied by any subsequent supplementary agreements (hereinafter referred to as "the Deed of Agreement"), the Minister and the Proprietor pursuant to section 7(2) of the Private Schools Conditional Integration Act 1975 established **Holy Family School, Wanaka** as an integrated school (hereinafter referred to as "the School").
- B The Proprietor and the Minister wish to vary the Deed of Agreement to replace the Plan attached to the Second Schedule with a new Plan pursuant to section 423(3) of the Education Act 1989.

**NOW THIS DEED OF AGREEMENT WITNESSETH THAT IT IS HEREBY COVENANTED AGREED AND DECLARED BY AND BETWEEN THE PARTIES HERETO AS FOLLOWS:**

1. **THAT** the Plan attached to this Supplementary Deed of Agreement is substituted as the Plan defining the School Premises in the Deed of Agreement
2. **THAT** the covenants conditions and restrictions contained and implied in the Deed of Agreement shall be read and construed subject to the modifications herein contained but in all other respects the Deed of Agreement is confirmed."



Initial

IN WITNESS WHEREOF these presents have been executed the day and year first hereinbefore written.

Signed by **BISHOP COLIN CAMPBELL**  
**THE ROMAN CATHOLIC BISHOP**  
**OF THE DIOCESE OF DUNEDIN**  
 and sealed with his Seal of Office in the presence of:

*C. D. Campbell*

*G. A. Hannington*  
*1940 Main Mt Rd*  
*Apapa Island*  
*Dunedin*  
*Diocesan Catholic Education*



Signed by *Brian Mitchell*  
 Group Manager, Ministry of Education  
 pursuant to authority delegated by the  
 Minister of Education acting on behalf of  
**HER MAJESTY THE QUEEN**  
 in the presence of:

*[Signature]*

*Sard Tyn*  
*Senior Advisor*  
*Wellington*

# Site Plan Update

Sheet #	Drawing #	Ref
A1 - A2 /	Job No 5304 /	McCoy-Wixon 6/17

2016/17

## School Information

School number	557
School name	Holy Family School (Wanaka)
School type	Full Primary (Y1-8)
Maximum Roll	225

SPU-ID  
2017-36

## School Roll

	Non MI roll	MI roll	Max Roll
Year 0	0		0
Year 1	40		40
Year 2	26		26
Year 3	44		44
Year 4	21		21
Year 5	33		33
Year 6	33		33
Year 7	13		13
Year 8	16		16
Year 9	0		0
Year 10	0		0
Year 11	0		0
Year 12	0		0
Year 13 +	0		0

Total school roll

225

ORS high

ORS very high

Outside technology roll

## School Entitlement

Classroom TS (excl gym)	10
Gymnasium TS	0.0
Classroom area	753
Gymnasium area	0
Library area	54
Administration area	149
Resource area	82
Hall / Multi-purpose area	138
Total net area	1,175
Total gross area	1,528

## K2 Actual

Total Net Area	1,127
Total Ancillary Area	-
Hall Discount	-
	1,127
MoE SB Gross	1,463
Non Integrated Gross	-
	1,463

Note: Area includes  
(New) Block D

Based on a roll of:

225

	SPG	K2	Surplus / (Deficit)
Net	1,175	1,127	(48)
Gross	1,528	1,463	(64)
TS	10	11	1

Based on a roll of:

225

	SPG	K2	Surplus / (Deficit)
Teaching Area	753	813	60
TS	10	11	1

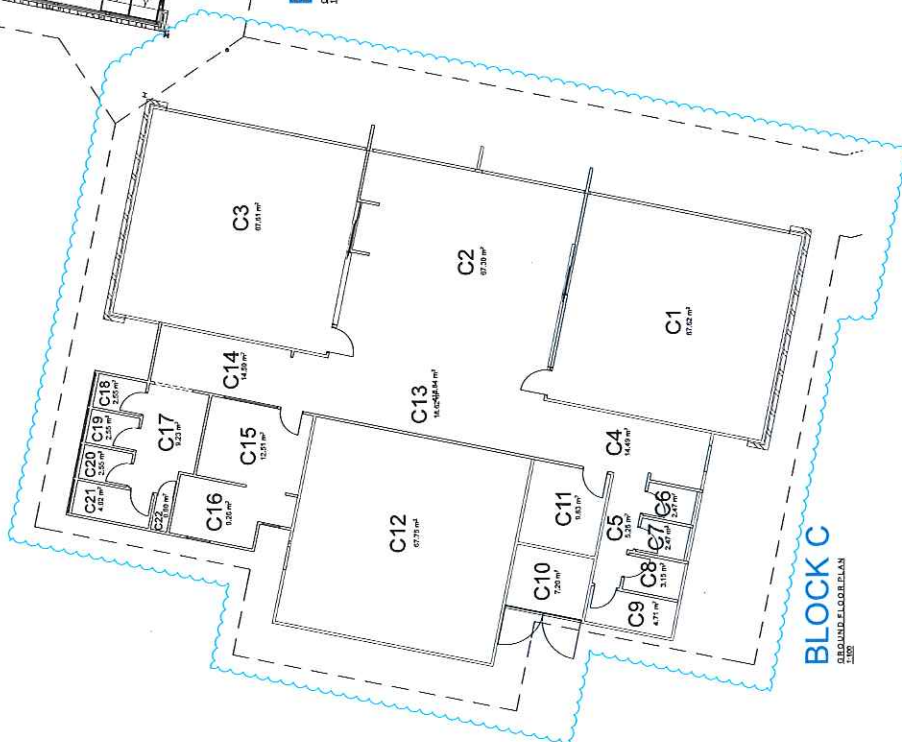
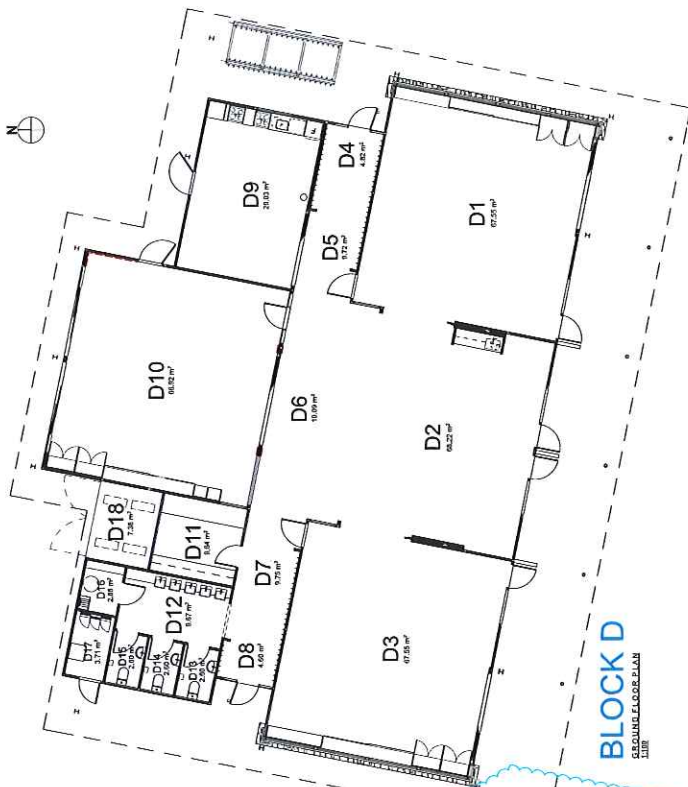
Brief summary of changes

Update Room Area in Block C. Add Block D

Helios (K2) will be updated after the SDA has been signed by the Proprietor and approved the MoE







BLOCK GROSS AREA m <sup>2</sup>	ROOM SCHEDULE NET AREA m <sup>2</sup>	
<b>A</b> Block A Gross 237.19m <sup>2</sup>	A1 Student Workshop	8.32 sq. m
	A2 Resource	15.68 sq. m
	A3 Library	56.21 sq. m
	A4 Toilet	2.57 sq. m
	A5 Store	31.38 sq. m
	A6 Foyer	10.09 sq. m
	A7 Office	5.21 sq. m
	A8 Resource	5.21 sq. m
	A9 Assembly	13.32 sq. m
	A10 Planning	12.24 sq. m
	A11 Interview	6.25 sq. m
	A12 Disabled Bathroom	3.72 sq. m
	A13 Toilet	3.72 sq. m
<b>N</b> Block N Gross 105.86m <sup>2</sup>	N1 Bedroom 1	15.10 sq. m
	N2 Entry Room	15.74 sq. m
	N3 Bedroom 2	12.84 sq. m
	N4 Hallway	6.06 sq. m
	N5 Bathroom	5.67 sq. m
	N6 Kitchen	35.92 sq. m
	N7 Laundry/Kitchen	20.35 sq. m
	N8 Bathroom 1	20.20 sq. m
	N9 Balcony 2	20.20 sq. m
<b>B</b> Block B Gross 404.11m <sup>2</sup>	B1 Classroom 3	67.59 sq. m
	B2 Communal Workspace	67.27 sq. m
	B3 Classroom 1	16.21 sq. m
	B4 Foyer	16.21 sq. m
	B5 Store	2.47 sq. m
	B6 Toilet	9.89 sq. m
	B7 Store	7.14 sq. m
	B8 Plant	7.14 sq. m
	B9 Withdrawal	67.59 sq. m
	B10 Classroom 2	16.21 sq. m
	B11 Corridor	18.70 sq. m
	B12 Resource	13.52 sq. m
	B13 Cleaners	5.78 sq. m
<b>C</b> Block C Gross 415.84m <sup>2</sup>	C1 Classroom 1	67.59 sq. m
	C2 Communal Workspace	67.30 sq. m
	C3 Classroom 3	67.61 sq. m
	C4 Corridor	14.49 sq. m
	C5 Store	2.47 sq. m
	C6 Toilet	9.89 sq. m
	C7 Toilet	2.47 sq. m
	C8 Data	3.15 sq. m
	C9 Cleaners	7.20 sq. m
	C10 Withdrawal	9.89 sq. m
	C11 Withdrawal	9.89 sq. m
	C12 Classroom 2	67.75 sq. m
	C13 Corridor	18.65 sq. m
<b>D</b> Block D Gross 405.45m <sup>2</sup>	D1 Classroom 1	67.55 sq. m
	D2 Communal Space	68.25 sq. m
	D3 Classroom 2	67.55 sq. m
	D4 Entry	4.82 sq. m
	D5 Bag Bay	15.09 sq. m
	D6 Corridor	15.09 sq. m
	D7 Bag Bay	9.75 sq. m
	D8 Entry	4.60 sq. m
	D9 Technology	28.05 sq. m
	D10 Classroom 3	9.64 sq. m
	D11 Teachers Workshop	9.67 sq. m
	D12 Passage	2.60 sq. m
	D13 Unisex Toilet	2.60 sq. m
	D14 Unisex Toilet	2.60 sq. m
	D15 Unisex Toilet	2.60 sq. m
	D16 Cleaner	2.85 sq. m
	D17 Data / SB	3.71 sq. m
	D18 Plant	7.36 sq. m

*[Handwritten signature]*

FOR INFORMATION ONLY